

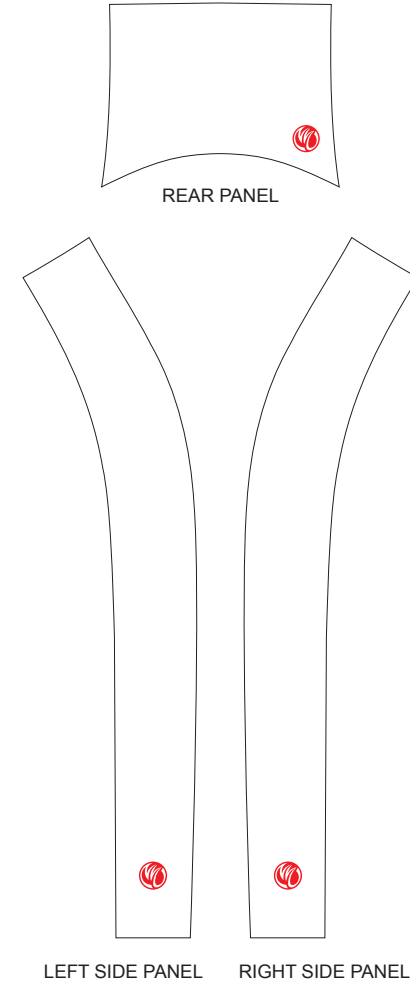
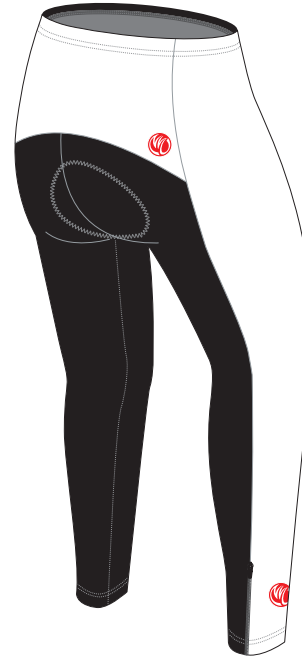
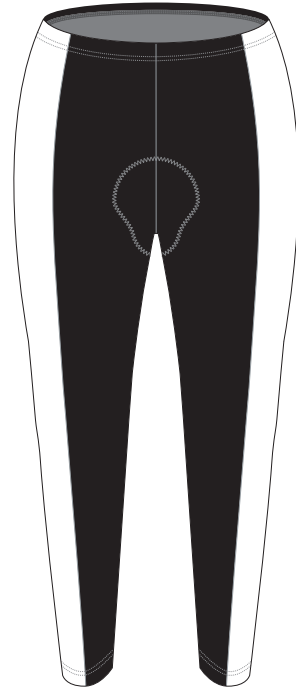
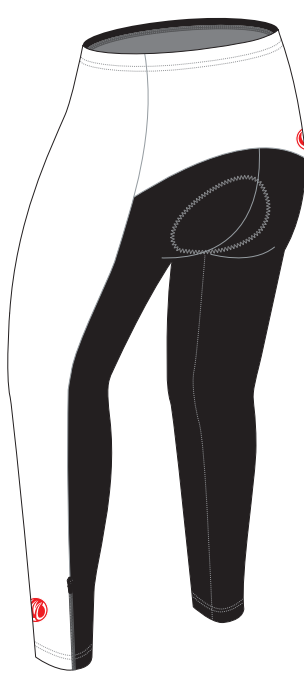
TAI01A Cycling Tights

C Style, with Short Zippers

CUSTOMER: _____ VERSION: 1
 DESIGN REQUEST NUMBER: _____ DATE: 00 / 00 / 2014
 www.nimblewear.com sales@nimblewear.com



Please note that NIMBLEWEAR logo must appear on the side panels and the back panel.



PRE-DYED LYCRA:



PANTONE® Black C



PANTONE® Red 186C



PANTONE® Dark Navy 2767 C



PANTONE® Navy Blue 2735 C



PANTONE® Light Blue 285 C



PANTONE® Cool Grey 11C



PANTONE® Green 340 C

COLORS USED:



FLATLOCK COLOR OPTIONS:



- This template can be edited with vector graphic software programs. Adobe Illustrator CS5 is recommended.
- All logos must be provided in vector format and all fonts must be converted into outline.
- The color on-screen may vary from the finished product. To confirm the color please refer to PANTONE® MATCHING SYSTEM FORMULA GUIDE Solid Coated.
- We will try the best to match the PANTONE® colors when printing, but exact matching cannot be guaranteed, due to variation in temperature, humidity and materials.

TAI02A Cycling Tights

U Style, with Short Zippers

CUSTOMER: _____ VERSION: 1
 DESIGN REQUEST NUMBER: _____ DATE: 00 / 00 / 2014
 www.nimblewear.com sales@nimblewear.com



Please note that NIMBLEWEAR logo must appear on the side panels.



PRE-DYED LYCRA:



PANTONE® Black C



PANTONE® Red 186C



PANTONE® Dark Navy 2767 C



PANTONE® Navy Blue 2735 C



PANTONE® Light Blue 285 C



PANTONE® Cool Grey 11C



PANTONE® Green 340 C

COLORS USED:



FLATLOCK COLOR OPTIONS:



- This template can be edited with vector graphic software programs. Adobe Illustrator CS5 is recommended.
- All logos must be provided in vector format and all fonts must be converted into outline.
- The color on-screen may vary from the finished product. To confirm the color please refer to PANTONE® MATCHING SYSTEM FORMULA GUIDE Solid Coated.
- We will try the best to match the PANTONE® colors when printing, but exact matching cannot be guaranteed, due to variation in temperature, humidity and materials.

TAI03A Cycling Tights

U Wrap Style, with Short Zippers

CUSTOMER: _____ VERSION: 1
 DESIGN REQUEST NUMBER: _____ DATE: 00 / 00 / 2014
 www.nimblewear.com sales@nimblewear.com



Please note that NIMBLEWEAR logo must appear on the side panels.



PRE-DYED LYCRA:

- PANTONE® Black C
- PANTONE® Red 186C
- PANTONE® Dark Navy 2767 C
- PANTONE® Navy Blue 2735 C
- PANTONE® Light Blue 285 C
- PANTONE® Cool Grey 11C
- PANTONE® Green 340 C

COLORS USED:



FLATLOCK COLOR OPTIONS:



- This template can be edited with vector graphic software programs. Adobe Illustrator CS5 is recommended.
- All logos must be provided in vector format and all fonts must be converted into outline.
- The color on-screen may vary from the finished product. To confirm the color please refer to PANTONE® MATCHING SYSTEM FORMULA GUIDE Solid Coated.
- We will try the best to match the PANTONE® colors when printing, but exact matching cannot be guaranteed, due to variation in temperature, humidity and materials.