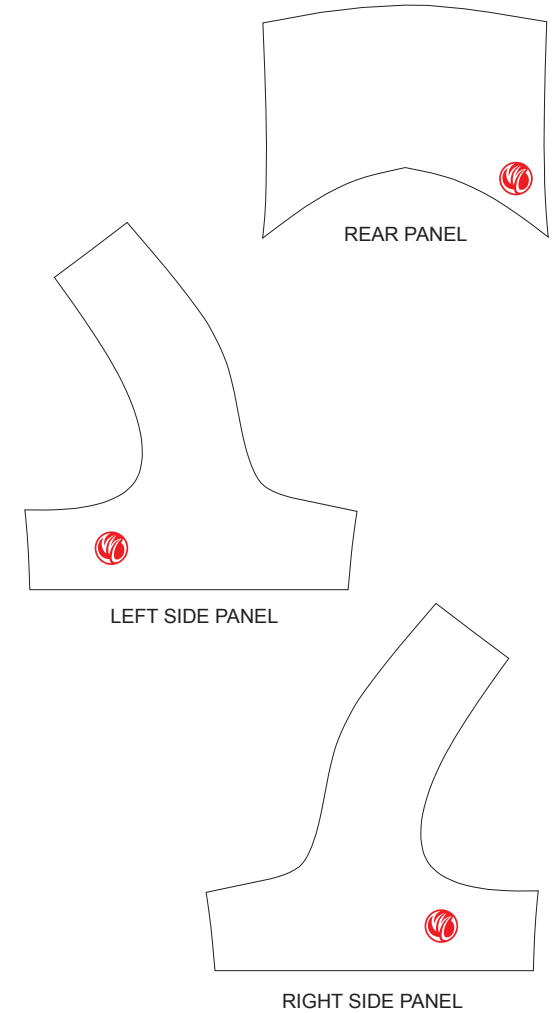


AGA01 1/2 Cycling Shorts

T Style

www.nimblewear.com
www.nimblewear.net



PRE-DYED
LYCRA:



PANTONE®
Black C



PANTONE®
Red 186C



PANTONE®
Dark Navy 2767 C



PANTONE®
Navy Blue 2736 C



PANTONE®
Cool Gray 11C



PANTONE®
Green 340 C

COLORS USED:



CUSTOMER: _____

DESIGN REQUEST NUMBER: _____

VERSION: 1

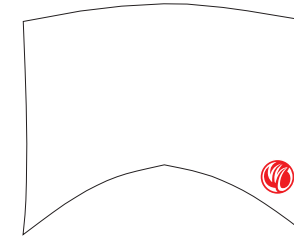
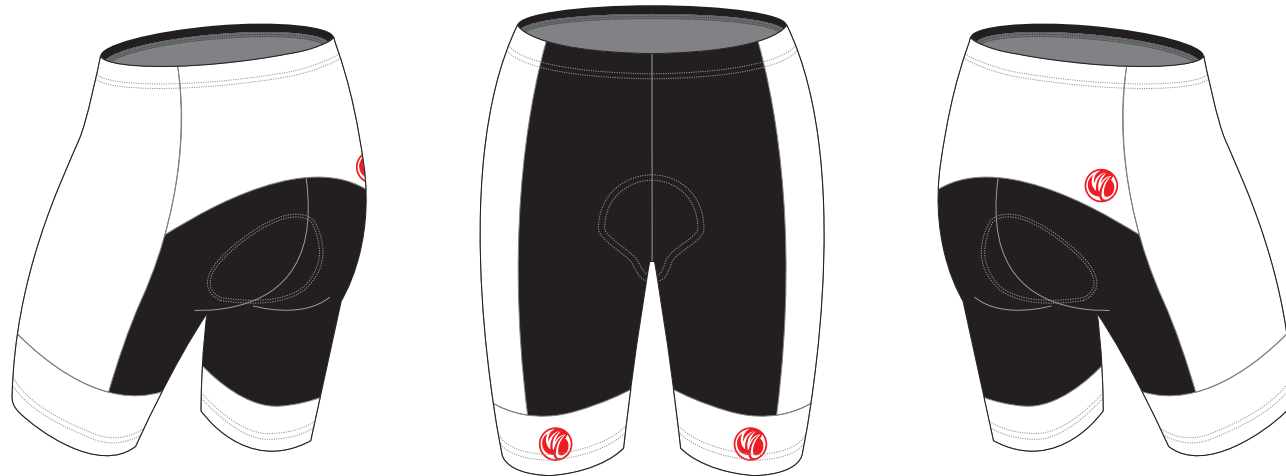
DATE: 00 / 00 / 2013

- This template can be edited with vector graphic software programs. Adobe Illustrator CS5 is recommended.
- All logos must be provided in vector format and all fonts must be converted into outline.
- The color on-screen may vary from the finished product. To confirm the color please refer to PANTONE® MATCHING SYSTEM FORMULA GUIDE Solid Coated.
- We will try the best to match the PANTONE® colors when printing, but exact matching cannot be guaranteed, due to variation in temperature, humidity and materials.

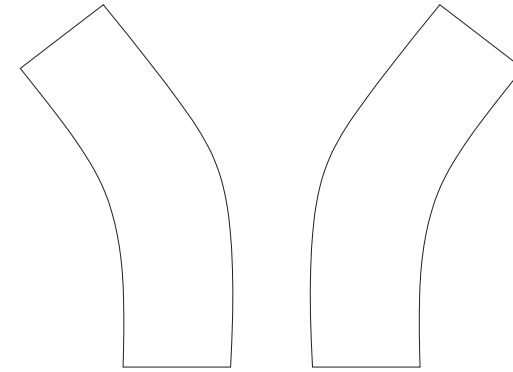
AGA02 1/2 Cycling Shorts

Wide Band Style

www.nimblewear.com
www.nimblewear.net



REAR PANEL



LEFT SIDE PANEL

RIGHT SIDE PANEL



LEFT BAND



RIGHT BAND

PRE-DYED
LYCRA:



PANTONE®
Black C



PANTONE®
Red 186C



PANTONE®
Dark Navy 2767 C



PANTONE®
Navy Blue 2736 C



PANTONE®
Cool Gray 11C



PANTONE®
Green 340 C

COLORS USED:



CUSTOMER: _____

DESIGN REQUEST NUMBER: _____

VERSION: 1

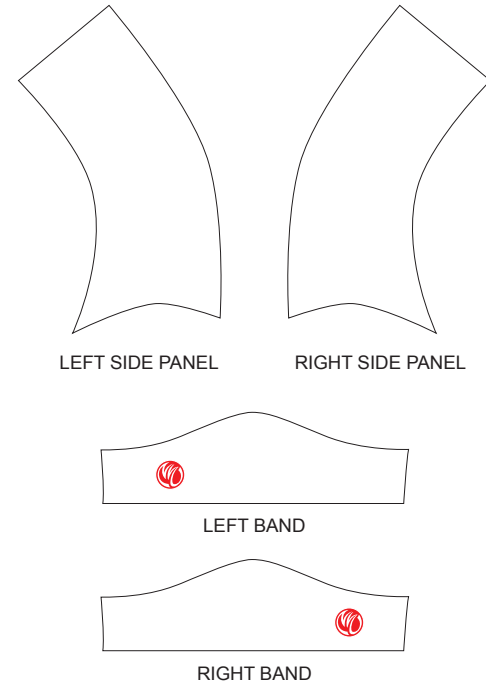
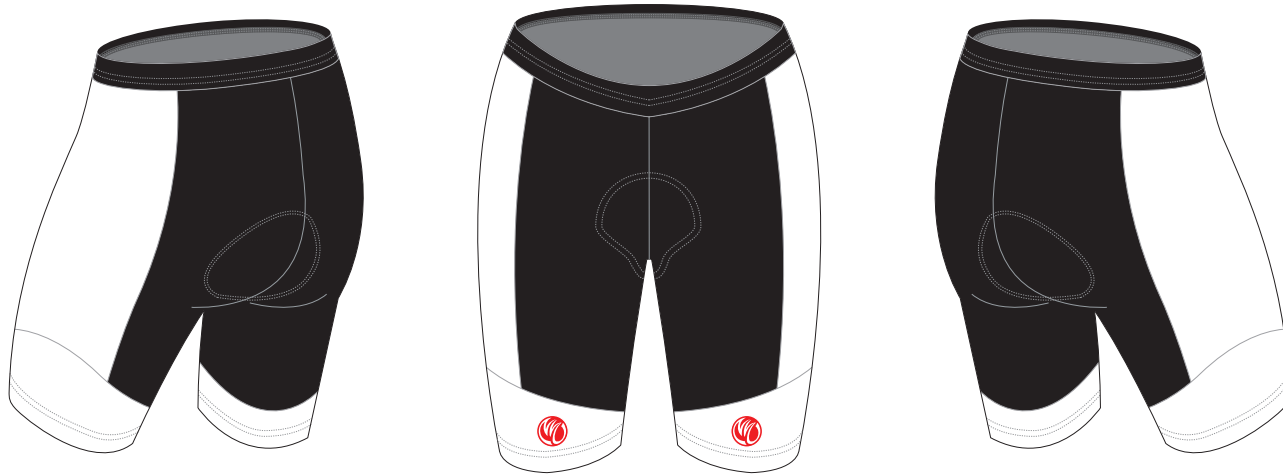
DATE: 00 / 00 / 2013

- This template can be edited with vector graphic software programs. Adobe Illustrator CS5 is recommended.
- All logos must be provided in vector format and all fonts must be converted into outline.
- The color on-screen may vary from the finished product. To confirm the color please refer to PANTONE® MATCHING SYSTEM FORMULA GUIDE Solid Coated.
- We will try the best to match the PANTONE® colors when printing, but exact matching cannot be guaranteed, due to variation in temperature, humidity and materials.

AGA03 1/2 Cycling Shorts

Wide Band Style

www.nimblewear.com
www.nimblewear.net



PRE-DYED LYCRA:



PANTONE® Black C



PANTONE® Red 186C



PANTONE® Dark Navy 2767 C



PANTONE® Navy Blue 2736 C



PANTONE® Cool Gray 11C



PANTONE® Green 340 C

COLORS USED:



CUSTOMER: _____

DESIGN REQUEST NUMBER: _____

VERSION: 1

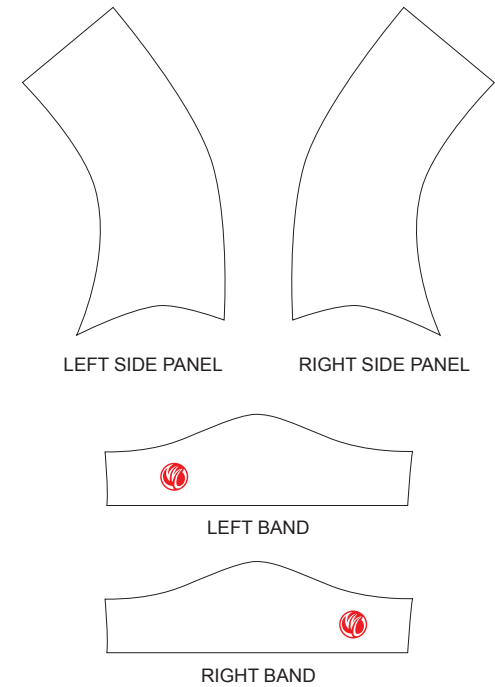
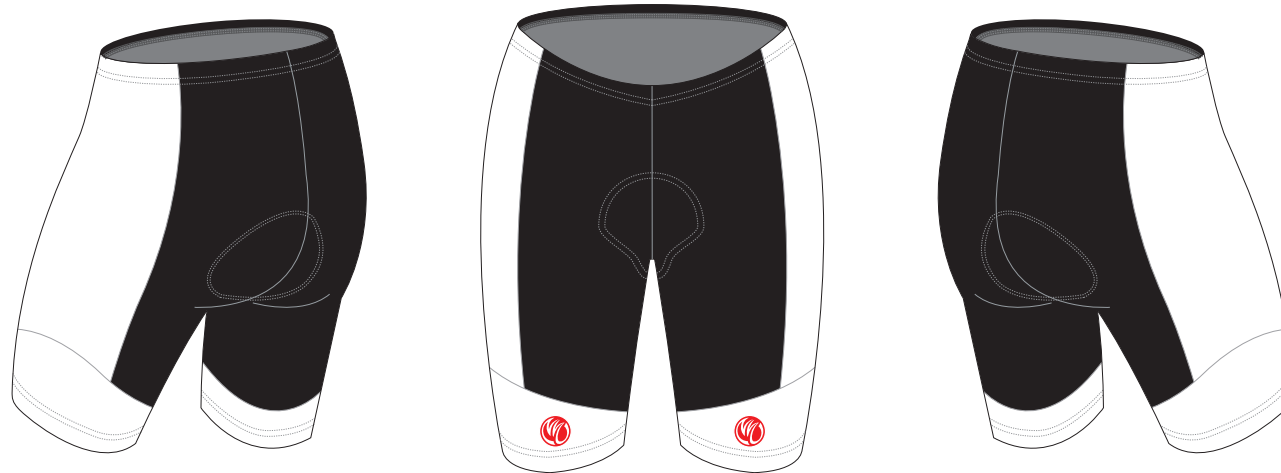
DATE: 00 / 00 / 2013

- This template can be edited with vector graphic software programs. Adobe Illustrator CS5 is recommended.
- All logos must be provided in vector format and all fonts must be converted into outline.
- The color on-screen may vary from the finished product. To confirm the color please refer to PANTONE® MATCHING SYSTEM FORMULA GUIDE Solid Coated.
- We will try the best to match the PANTONE® colors when printing, but exact matching cannot be guaranteed, due to variation in temperature, humidity and materials.

AGA04 1/2 Cycling Shorts

Wide Band Style

www.nimblewear.com
www.nimblewear.net



PRE-DYED LYCRA:



PANTONE® Black C



PANTONE® Red 186C



PANTONE® Dark Navy 2767 C



PANTONE® Navy Blue 2738 C



PANTONE® Cool Gray 11C



PANTONE® Green 340 C

COLORS USED:



CUSTOMER: _____

DESIGN REQUEST NUMBER: _____

VERSION: 1

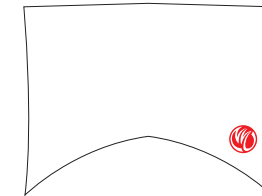
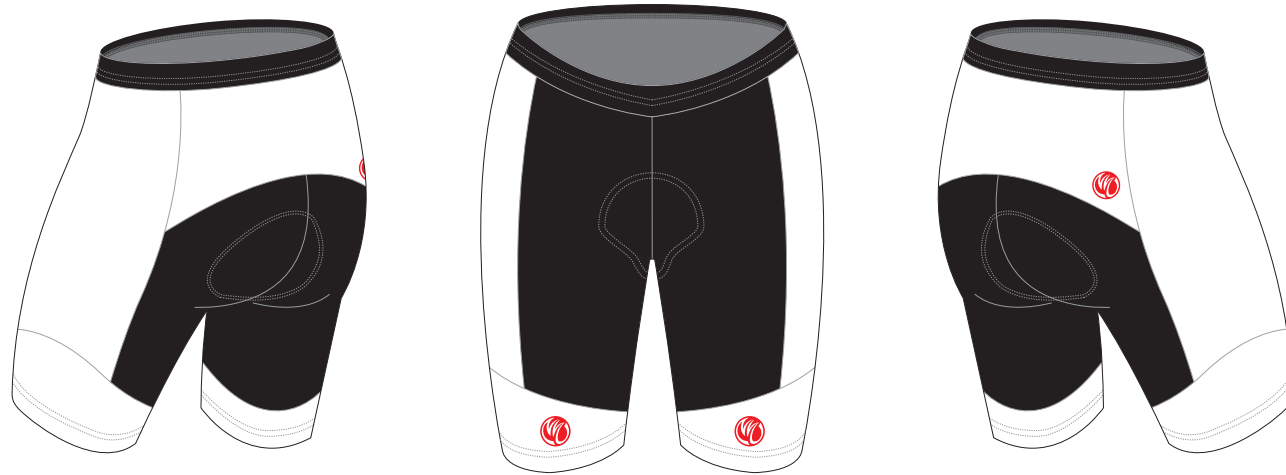
DATE: 00 / 00 / 2013

- This template can be edited with vector graphic software programs. Adobe Illustrator CS5 is recommended.
- All logos must be provided in vector format and all fonts must be converted into outline.
- The color on-screen may vary from the finished product. To confirm the color please refer to PANTONE® MATCHING SYSTEM FORMULA GUIDE Solid Coated.
- We will try the best to match the PANTONE® colors when printing, but exact matching cannot be guaranteed, due to variation in temperature, humidity and materials.

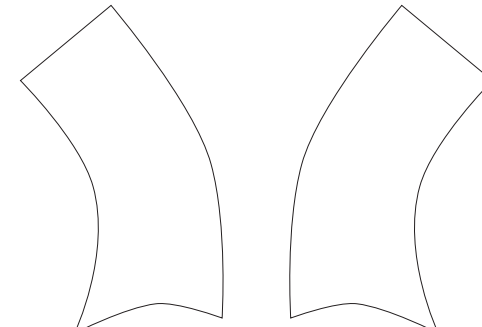
AGA05 1/2 Cycling Shorts

Wide Band Style

www.nimblewear.com
www.nimblewear.net

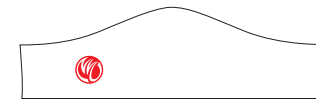


REAR PANEL



LEFT SIDE PANEL

RIGHT SIDE PANEL



LEFT BAND



RIGHT BAND

PRE-DYED LYCRA:



PANTONE® Black C



PANTONE® Red 186C



PANTONE® Dark Navy 2767 C



PANTONE® Navy Blue 2736 C



PANTONE® Cool Gray 11C



PANTONE® Green 340 C

COLORS USED:



CUSTOMER: _____

DESIGN REQUEST NUMBER: _____

VERSION: 1

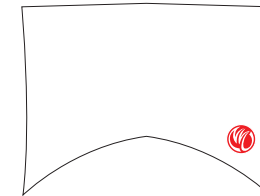
DATE: 00 / 00 / 2013

- This template can be edited with vector graphic software programs. Adobe Illustrator CS5 is recommended.
- All logos must be provided in vector format and all fonts must be converted into outline.
- The color on-screen may vary from the finished product. To confirm the color please refer to PANTONE® MATCHING SYSTEM FORMULA GUIDE Solid Coated.
- We will try the best to match the PANTONE® colors when printing, but exact matching cannot be guaranteed, due to variation in temperature, humidity and materials.

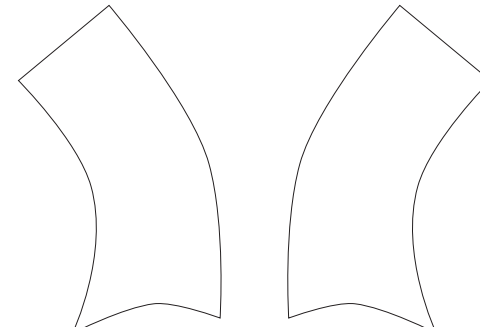
AGA06 1/2 Cycling Shorts

Wide Band Style

www.nimblewear.com
www.nimblewear.net

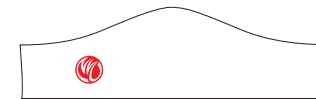


REAR PANEL



LEFT SIDE PANEL

RIGHT SIDE PANEL



LEFT BAND



RIGHT BAND

PRE-DYED LYCRA:



PANTONE® Black C



PANTONE® Red 186C



PANTONE® Dark Navy 2767 C



PANTONE® Navy Blue 2736 C



PANTONE® Cool Gray 11C



PANTONE® Green 340 C

COLORS USED:



CUSTOMER: _____

DESIGN REQUEST NUMBER: _____

VERSION: 1

DATE: 00 / 00 / 2013

- This template can be edited with vector graphic software programs. Adobe Illustrator CS5 is recommended.
- All logos must be provided in vector format and all fonts must be converted into outline.
- The color on-screen may vary from the finished product. To confirm the color please refer to PANTONE® MATCHING SYSTEM FORMULA GUIDE Solid Coated.
- We will try the best to match the PANTONE® colors when printing, but exact matching cannot be guaranteed, due to variation in temperature, humidity and materials.

AGA07 1/2 Cycling Shorts

U Style

www.nimblewear.com
www.nimblewear.net



PRE-DYED
LYCRA:



PANTONE®
Black C



PANTONE®
Red 186C



PANTONE®
Dark Navy 2767 C



PANTONE®
Navy Blue 2736 C



PANTONE®
Cool Gray 11C



PANTONE®
Green 340 C

COLORS USED:



CUSTOMER: _____

DESIGN REQUEST NUMBER: _____

VERSION: 1

DATE: 00 / 00 / 2013

- This template can be edited with vector graphic software programs. Adobe Illustrator CS5 is recommended.
- All logos must be provided in vector format and all fonts must be converted into outline.
- The color on-screen may vary from the finished product. To confirm the color please refer to PANTONE® MATCHING SYSTEM FORMULA GUIDE Solid Coated.
- We will try the best to match the PANTONE® colors when printing, but exact matching cannot be guaranteed, due to variation in temperature, humidity and materials.

AGA08 1/2 Cycling Shorts

U+2 Style

www.nimblewear.com
www.nimblewear.net



PRE-DYED
LYCRA:



PANTONE®
Black C



PANTONE®
Red 186C



PANTONE®
Dark Navy 2767 C



PANTONE®
Navy Blue 2738 C



PANTONE®
Cool Gray 11C



PANTONE®
Green 340 C

COLORS USED:



CUSTOMER: _____

DESIGN REQUEST NUMBER: _____

VERSION: 1

DATE: 00 / 00 / 2013

- This template can be edited with vector graphic software programs. Adobe Illustrator CS5 is recommended.
- All logos must be provided in vector format and all fonts must be converted into outline.
- The color on-screen may vary from the finished product. To confirm the color please refer to PANTONE® MATCHING SYSTEM FORMULA GUIDE Solid Coated.
- We will try the best to match the PANTONE® colors when printing, but exact matching cannot be guaranteed, due to variation in temperature, humidity and materials.

AGA09 1/2 Cycling Shorts

U Style; With Bands

www.nimblewear.com
www.nimblewear.net



PRE-DYED
LYCRA:

PANTONE®
Black C

PANTONE®
Red 186C

PANTONE®
Dark Navy 2767 C

PANTONE®
Navy Blue 2736 C

PANTONE®
Cool Gray 11C

PANTONE®
Green 340 C

COLORS USED:



CUSTOMER: _____

DESIGN REQUEST NUMBER: _____

VERSION: 1

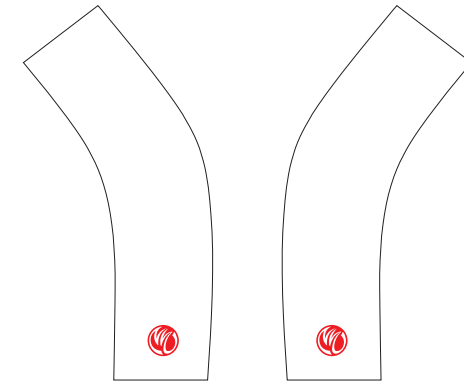
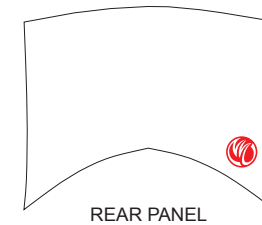
DATE: 00 / 00 / 2013

- This template can be edited with vector graphic software programs. Adobe Illustrator CS5 is recommended.
- All logos must be provided in vector format and all fonts must be converted into outline.
- The color on-screen may vary from the finished product. To confirm the color please refer to PANTONE® MATCHING SYSTEM FORMULA GUIDE Solid Coated.
- We will try the best to match the PANTONE® colors when printing, but exact matching cannot be guaranteed, due to variation in temperature, humidity and materials.

AGA10 1/2 Cycling Shorts

C Style

www.nimblewear.com
www.nimblewear.net



PRE-DYED
LYCRA:



PANTONE®
Black C



PANTONE®
Red 186C



PANTONE®
Dark Navy 2767 C



PANTONE®
Navy Blue 2738 C



PANTONE®
Cool Gray 11C



PANTONE®
Green 340 C

COLORS USED:



CUSTOMER: _____

DESIGN REQUEST NUMBER: _____

VERSION: 1

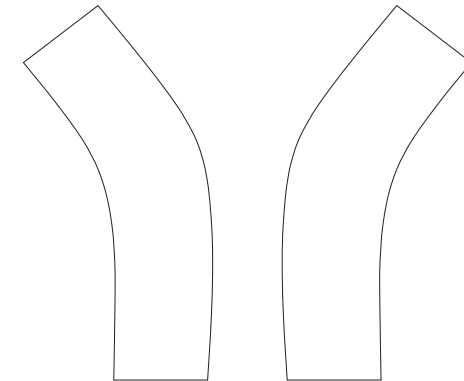
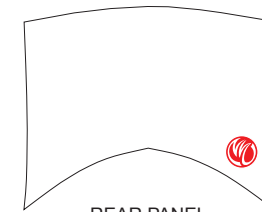
DATE: 00 / 00 / 2013

- This template can be edited with vector graphic software programs. Adobe Illustrator CS5 is recommended.
- All logos must be provided in vector format and all fonts must be converted into outline.
- The color on-screen may vary from the finished product. To confirm the color please refer to PANTONE® MATCHING SYSTEM FORMULA GUIDE Solid Coated.
- We will try the best to match the PANTONE® colors when printing, but exact matching cannot be guaranteed, due to variation in temperature, humidity and materials.

AGA11 1/2 Cycling Shorts

C+2 Style

www.nimblewear.com
www.nimblewear.net



PRE-DYED LYCRA:



PANTONE® Black C



PANTONE® Red 186C



PANTONE® Dark Navy 2767 C



PANTONE® Navy Blue 2736 C



PANTONE® Cool Gray 11C



PANTONE® Green 340 C

COLORS USED:



CUSTOMER: _____

DESIGN REQUEST NUMBER: _____

VERSION: 1

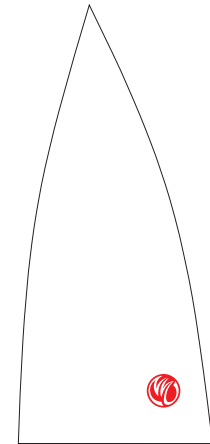
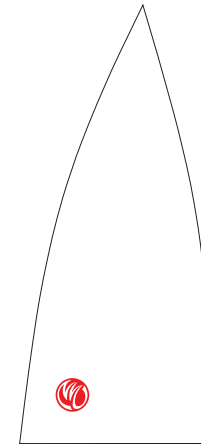
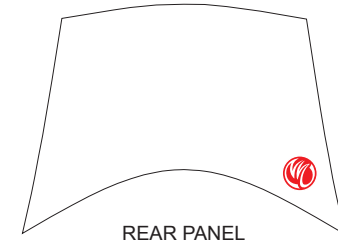
DATE: 00 / 00 / 2013

- This template can be edited with vector graphic software programs. Adobe Illustrator CS5 is recommended.
- All logos must be provided in vector format and all fonts must be converted into outline.
- The color on-screen may vary from the finished product. To confirm the color please refer to PANTONE® MATCHING SYSTEM FORMULA GUIDE Solid Coated.
- We will try the best to match the PANTONE® colors when printing, but exact matching cannot be guaranteed, due to variation in temperature, humidity and materials.

AGA12 1/2 Cycling Shorts

V Style

www.nimblewear.com
www.nimblewear.net



PRE-DYED LYCRA:



PANTONE® Black C



PANTONE® Red 786C



PANTONE® Dark Navy 2767 C



PANTONE® Navy Blue 2736 C



PANTONE® Cool Gray 11C



PANTONE® Green 340 C

COLORS USED:



CUSTOMER: _____

DESIGN REQUEST NUMBER: _____

VERSION: 1

DATE: 00 / 00 / 2013

- This template can be edited with vector graphic software programs. Adobe Illustrator CS5 is recommended.
- All logos must be provided in vector format and all fonts must be converted into outline.
- The color on-screen may vary from the finished product. To confirm the color please refer to PANTONE® MATCHING SYSTEM FORMULA GUIDE Solid Coated.
- We will try the best to match the PANTONE® colors when printing, but exact matching cannot be guaranteed, due to variation in temperature, humidity and materials.

AGA13 1/2 Cycling Shorts

U Wrap Style

www.nimblewear.com
www.nimblewear.net



PRE-DYED
LYCRA:



PANTONE®
Black C



PANTONE®
Red 186C



PANTONE®
Dark Navy 2767 C



PANTONE®
Navy Blue 2736 C



PANTONE®
Cool Gray 11C



PANTONE®
Green 340 C

COLORS USED:



CUSTOMER: _____

DESIGN REQUEST NUMBER: _____

VERSION: 1

DATE: 00 / 00 / 2013

- This template can be edited with vector graphic software programs. Adobe Illustrator CS5 is recommended.
- All logos must be provided in vector format and all fonts must be converted into outline.
- The color on-screen may vary from the finished product. To confirm the color please refer to PANTONE® MATCHING SYSTEM FORMULA GUIDE Solid Coated.
- We will try the best to match the PANTONE® colors when printing, but exact matching cannot be guaranteed, due to variation in temperature, humidity and materials.