

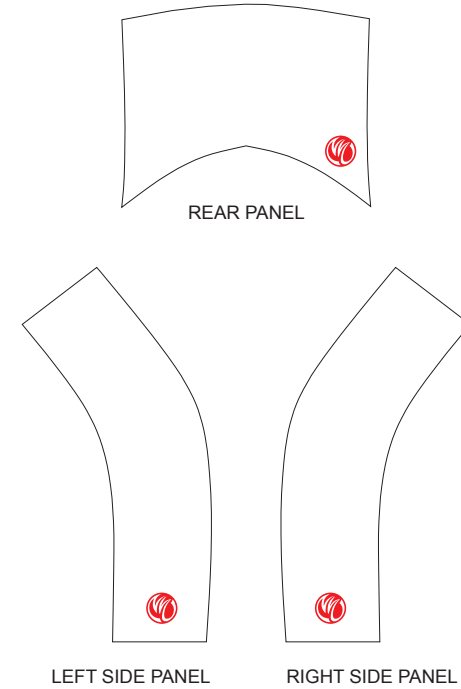
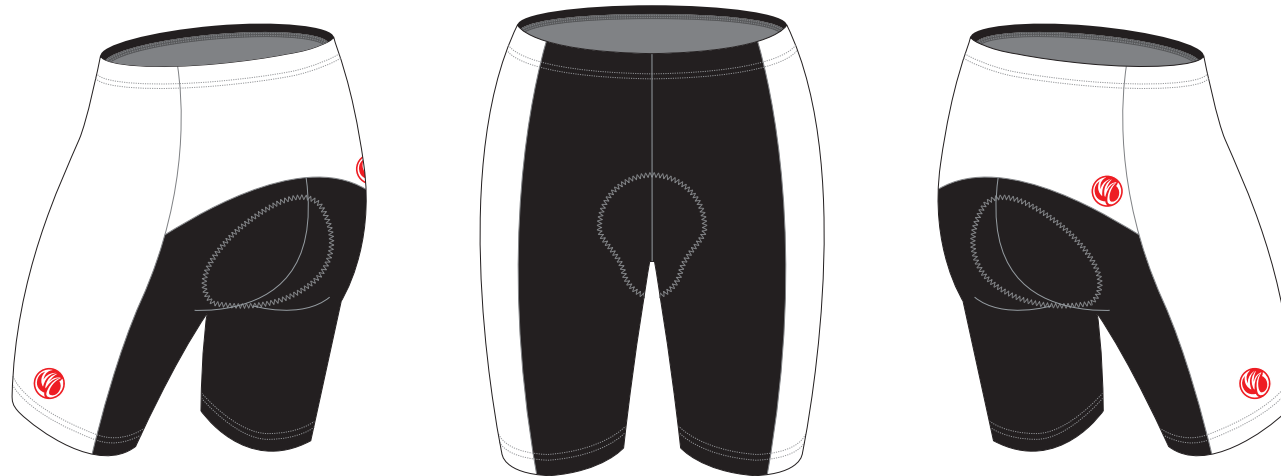
# TAG01A Cycling Shorts

C Style, with Silicon Gripper

CUSTOMER: \_\_\_\_\_ VERSION: 1  
 DESIGN REQUEST NUMBER: \_\_\_\_\_ DATE: 00 / 00 / 2014  
 www.nimblewear.com sales@nimblewear.com



Please note that NIMBLEWEAR logo must appear on the side panels and the back panel.



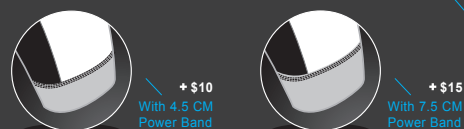
PRE-DYED LYCRA:



## COLORS USED:



## OTHER OPTIONS FOR LEG HEM:



## FLATLOCK COLOR OPTIONS:



• This template can be edited with vector graphic software programs. Adobe Illustrator CS5 is recommended.  
 • All logos must be provided in vector format and all fonts must be converted into outline.  
 • The color on-screen may vary from the finished product. To confirm the color please refer to PANTONE® MATCHING SYSTEM FORMULA GUIDE Solid Coated.  
 • We will try the best to match the PANTONE® colors when printing, but exact matching cannot be guaranteed, due to variation in temperature, humidity and materials.

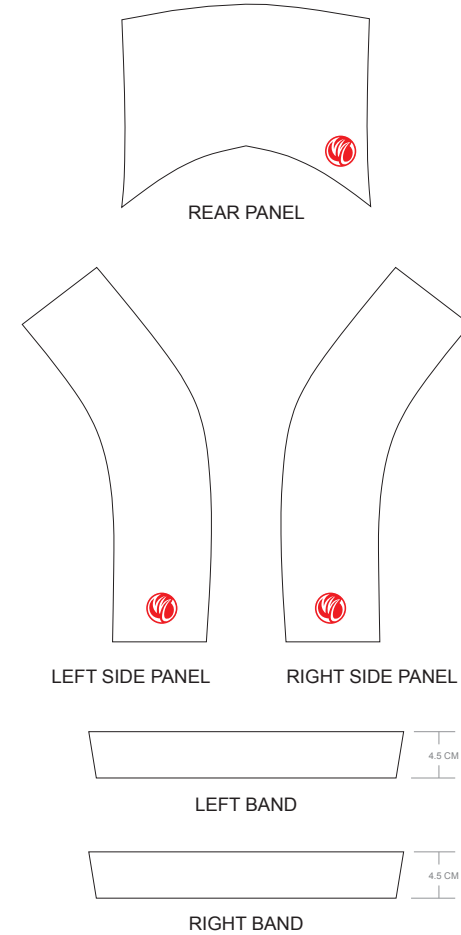
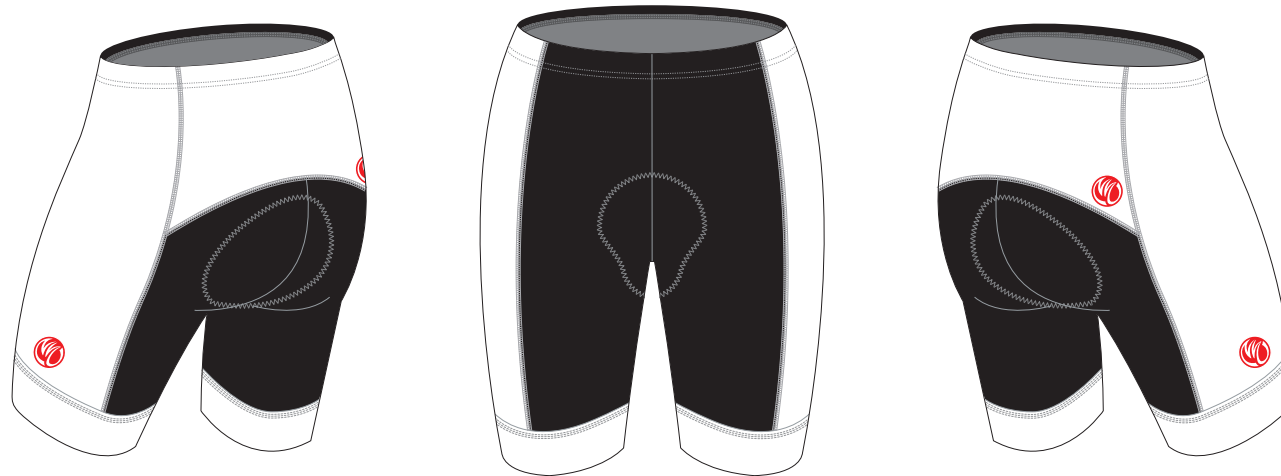
# TAG02A Cycling Shorts

C Style, with 4.5 CM Power Band

CUSTOMER: \_\_\_\_\_ VERSION: 1  
 DESIGN REQUEST NUMBER: \_\_\_\_\_ DATE: 00 / 00 / 2014  
 www.nimblewear.com sales@nimblewear.com



Please note that NIMBLEWEAR logo must appear on the side panels and the back panel. NIMBLEWEAR standard power band for leg hem is 4.5 CM in width. 7.5 CM power band is available upon customer's request.



PRE-DYED LYCRA:



PANTONE® Black C



PANTONE® Red 186C



PANTONE® Dark Navy 2767 C



PANTONE® Navy Blue 2735 C



PANTONE® Light Blue 285 C



PANTONE® Cool Grey 11C



PANTONE® Green 340 C

## COLORS USED:



## OTHER OPTIONS FOR LEG HEM:



## FLATLOCK COLOR OPTIONS:



- This template can be edited with vector graphic software programs. Adobe Illustrator CS5 is recommended.
- All logos must be provided in vector format and all fonts must be converted into outline.
- The color on-screen may vary from the finished product. To confirm the color please refer to PANTONE® MATCHING SYSTEM FORMULA GUIDE Solid Coated.
- We will try the best to match the PANTONE® colors when printing, but exact matching cannot be guaranteed, due to variation in temperature, humidity and materials.

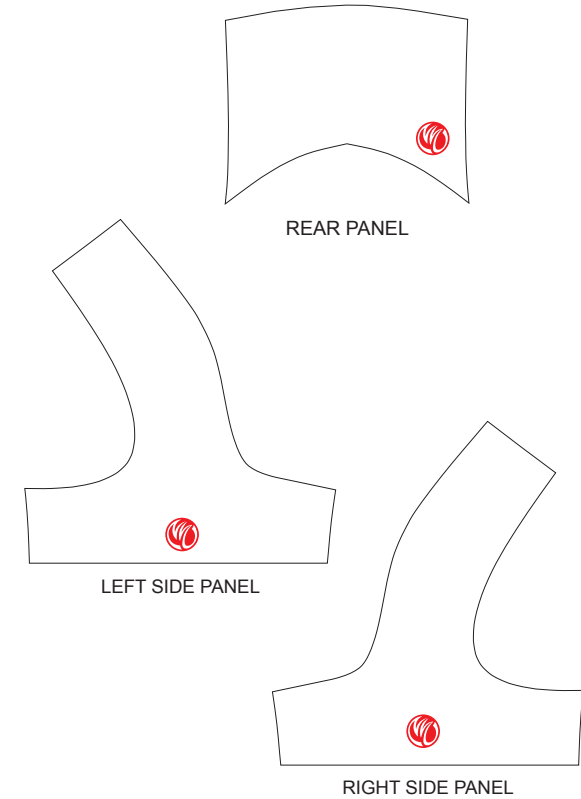
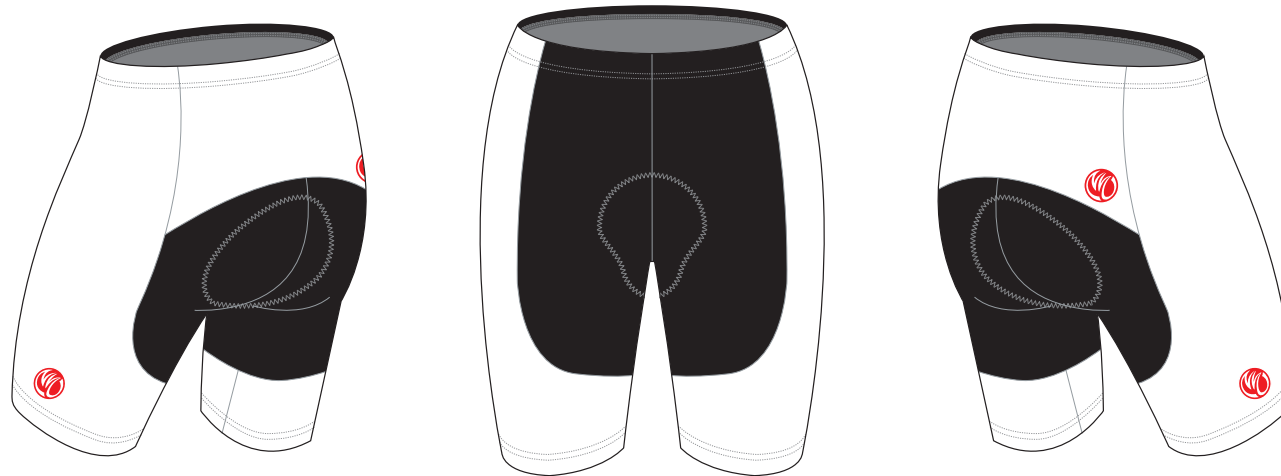
# TAG03A Cycling Shorts

T Style, with Silicon Gripper

CUSTOMER: \_\_\_\_\_ VERSION: 1  
 DESIGN REQUEST NUMBER: \_\_\_\_\_ DATE: 00 / 00 / 2014  
 www.nimblewear.com sales@nimblewear.com



Please note that NIMBLEWEAR logo must appear on the side panels and the back panel.



PRE-DYED LYCRA:



PANTONE® Black C



PANTONE® Red 186C



PANTONE® Dark Navy 2767 C



PANTONE® Navy Blue 2738 C



PANTONE® Light Blue 285 C



PANTONE® Cool Grey 11C



PANTONE® Green 340 C

## COLORS USED:



## OTHER OPTIONS FOR LEG HEM:



+ \$10  
With 4.5 CM Power Band



+ \$15  
With 7.5 CM Power Band

## FLATLOCK COLOR OPTIONS:



\* This template can be edited with vector graphic software programs. Adobe Illustrator CS5 is recommended.  
 \* All logos must be provided in vector format and all fonts must be converted into outline.  
 \* The color on-screen may vary from the finished product. To confirm the color please refer to PANTONE® MATCHING SYSTEM FORMULA GUIDE Solid Coated.  
 \* We will try the best to match the PANTONE® colors when printing, but exact matching cannot be guaranteed, due to variation in temperature, humidity and materials.

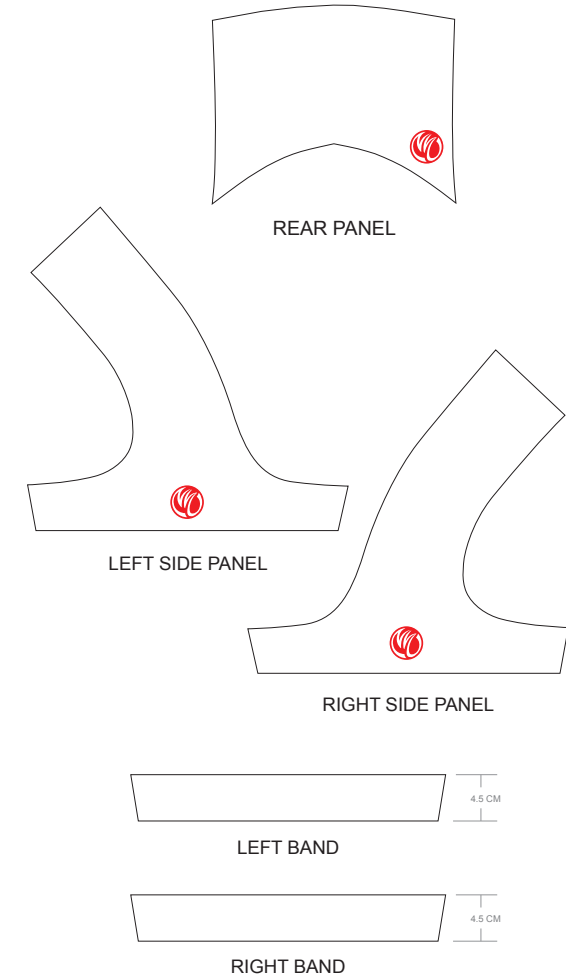
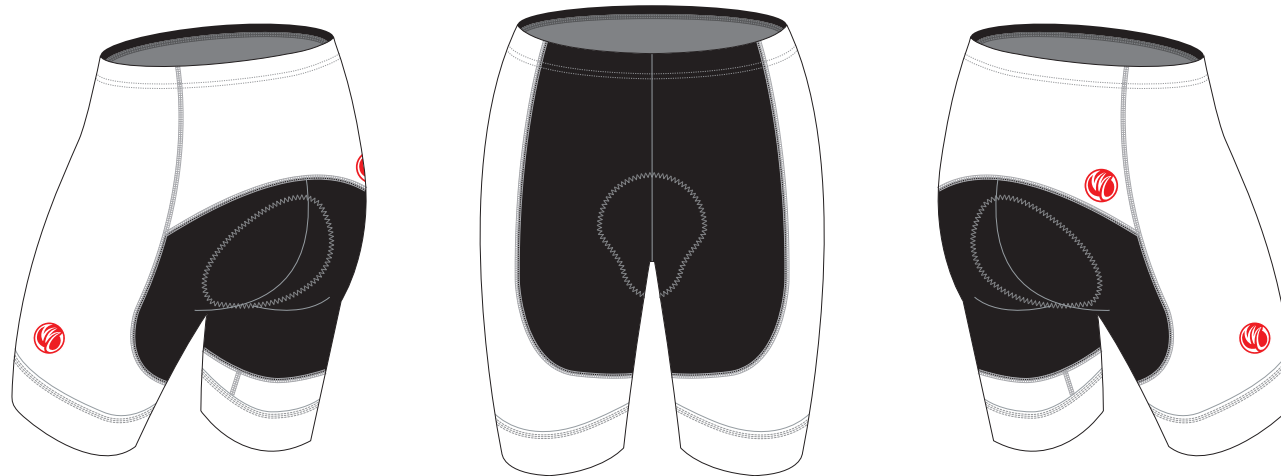
# TAG04A Cycling Shorts

T Style, with 4.5 CM Power Band

CUSTOMER: \_\_\_\_\_ VERSION: 1  
 DESIGN REQUEST NUMBER: \_\_\_\_\_ DATE: 00 / 00 / 2014  
 www.nimblewear.com sales@nimblewear.com



Please note that NIMBLEWEAR logo must appear on the side panels and the back panel. NIMBLEWEAR standard power band for leg hem is 4.5 CM in width. 7.5 CM power band is available upon customer's request.



PRE-DYED LYCRA:

PANTONE® Black C

PANTONE® Red 186C

PANTONE® Dark Navy 2767 C

PANTONE® Navy Blue 2738 C

PANTONE® Light Blue 285 C

PANTONE® Cool Grey 11C

PANTONE® Green 340 C

## COLORS USED:



## OTHER OPTIONS FOR LEG HEM:



## FLATLOCK COLOR OPTIONS:



- This template can be edited with vector graphic software programs. Adobe Illustrator CS5 is recommended.
- All logos must be provided in vector format and all fonts must be converted into outline.
- The color on-screen may vary from the finished product. To confirm the color please refer to PANTONE® MATCHING SYSTEM FORMULA GUIDE Solid Coated.
- We will try the best to match the PANTONE® colors when printing, but exact matching cannot be guaranteed, due to variation in temperature, humidity and materials.

# TAG05A Cycling Shorts

U Style, with Silicon Gripper

CUSTOMER: \_\_\_\_\_ VERSION: 1  
 DESIGN REQUEST NUMBER: \_\_\_\_\_ DATE: 00 / 00 / 2014  
 www.nimblewear.com sales@nimblewear.com



Please note that NIMBLEWEAR logo must appear on the side panels.



PRE-DYED LYCRA:



PANTONE® Black C



PANTONE® Red 186C



PANTONE® Dark Navy 2767 C



PANTONE® Navy Blue 2735 C



PANTONE® Light Blue 285 C



PANTONE® Cool Grey 11C

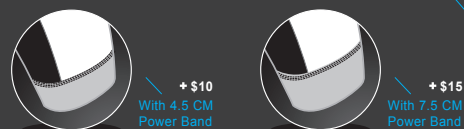


PANTONE® Green 340 C

## COLORS USED:



## OTHER OPTIONS FOR LEG HEM:



## FLATLOCK COLOR OPTIONS:



\* This template can be edited with vector graphic software programs. Adobe Illustrator CS5 is recommended.  
 \* All logos must be provided in vector format and all fonts must be converted into outline.  
 \* The color on-screen may vary from the finished product. To confirm the color please refer to PANTONE® MATCHING SYSTEM FORMULA GUIDE Solid Coated.  
 \* We will try the best to match the PANTONE® colors when printing, but exact matching cannot be guaranteed, due to variation in temperature, humidity and materials.

# TAG06A Cycling Shorts

U Style, with 4.5 CM Power Band

CUSTOMER: \_\_\_\_\_ VERSION: 1  
 DESIGN REQUEST NUMBER: \_\_\_\_\_ DATE: 00 / 00 / 2014  
 www.nimblewear.com sales@nimblewear.com



Please note that NIMBLEWEAR logo must appear on the side panels. NIMBLEWEAR standard power band for leg hem is 4.5 CM in width. 7.5 CM power band is available upon customer's request.



PRE-DYED LYCRA:

PANTONE® Black C

PANTONE® Red 186C

PANTONE® Dark Navy 2797 C

PANTONE® Navy Blue 2735 C

PANTONE® Light Blue 285 C

PANTONE® Cool Grey 11C

PANTONE® Green 340 C

## COLORS USED:



## OTHER OPTIONS FOR LEG HEM:



## FLATLOCK COLOR OPTIONS:



- This template can be edited with vector graphic software programs. Adobe Illustrator CS5 is recommended.
- All logos must be provided in vector format and all fonts must be converted into outline.
- The color on-screen may vary from the finished product. To confirm the color please refer to PANTONE® MATCHING SYSTEM FORMULA GUIDE Solid Coated.
- We will try the best to match the PANTONE® colors when printing, but exact matching cannot be guaranteed, due to variation in temperature, humidity and materials.

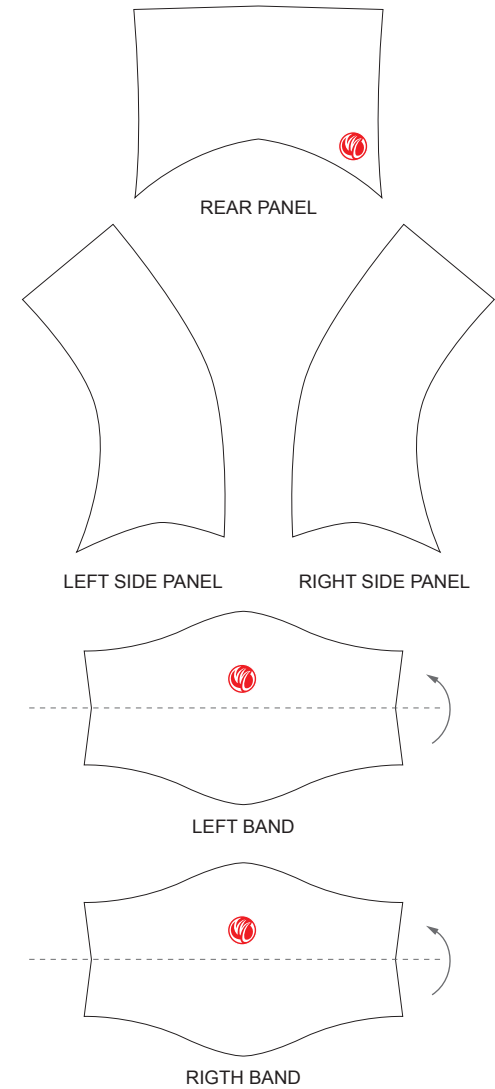
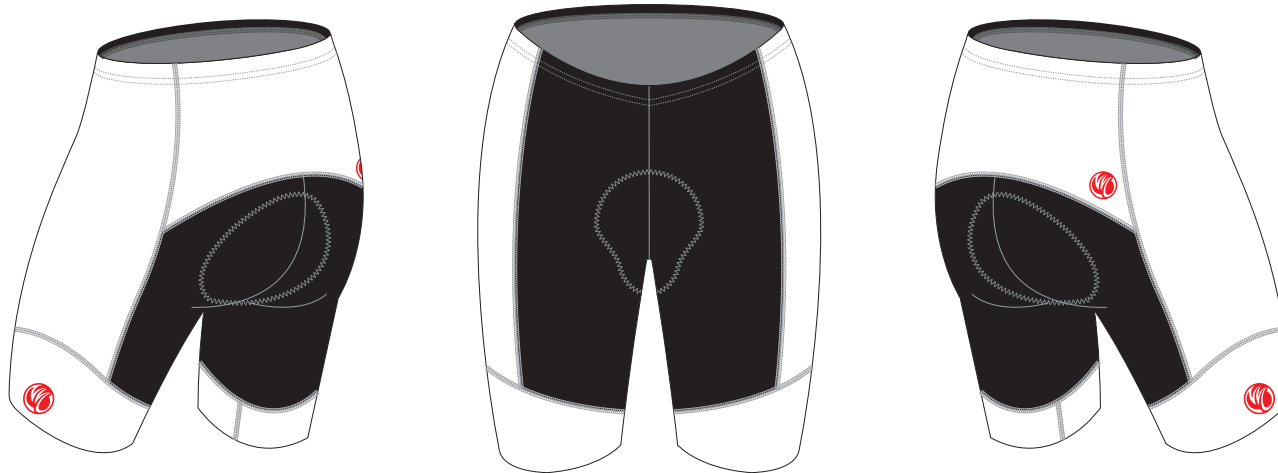
# TAG07B Cycling Shorts

Wide Band Style, with Double Lycra Power Band

CUSTOMER: \_\_\_\_\_ VERSION: 1  
 DESIGN REQUEST NUMBER: \_\_\_\_\_ DATE: 00 / 00 / 2014  
 www.nimblewear.com sales@nimblewear.com



Please note that NIMBLEWEAR logo must appear on the side panels and the back panel.



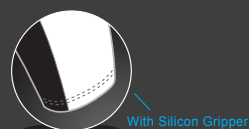
PRE-DYED LYCRA:

- PANTONE® Black C
- PANTONE® Red 186C
- PANTONE® Dark Navy 2767 C
- PANTONE® Navy Blue 2738 C
- PANTONE® Light Blue 285 C
- PANTONE® Cool Grey 11C
- PANTONE® Green 340 C

## COLORS USED:



## OTHER OPTIONS FOR LEG HEM:



## FLATLOCK COLOR OPTIONS:



- This template can be edited with vector graphic software programs. Adobe Illustrator CS5 is recommended.
- All logos must be provided in vector format and all fonts must be converted into outline.
- The color on-screen may vary from the finished product. To confirm the color please refer to PANTONE® MATCHING SYSTEM FORMULA GUIDE Solid Coated.
- We will try the best to match the PANTONE® colors when printing, but exact matching cannot be guaranteed, due to variation in temperature, humidity and materials.

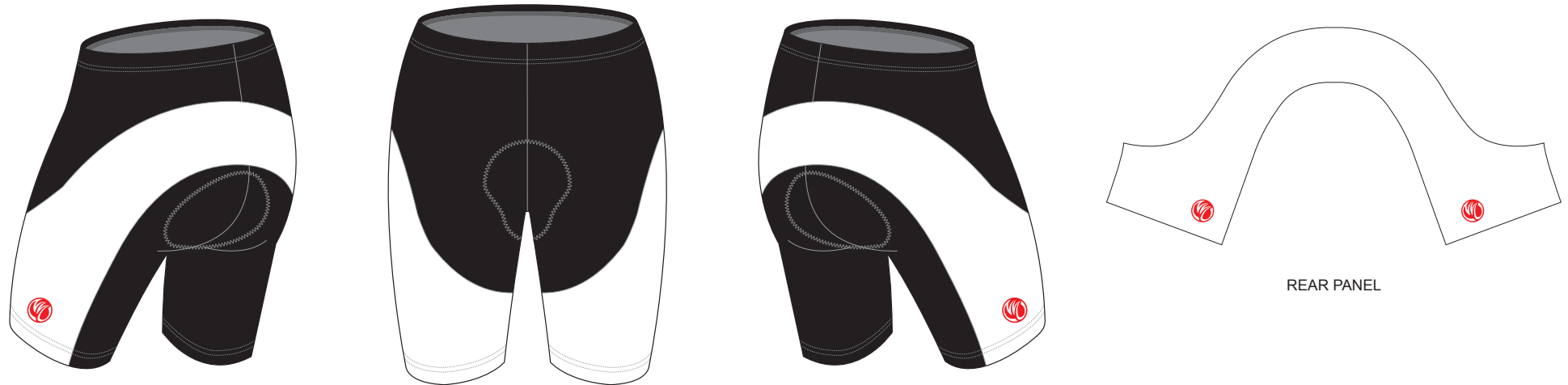
# TAG08A Cycling Shorts

U Wrap Style, with Silicon Gripper

CUSTOMER: \_\_\_\_\_ VERSION: 1  
 DESIGN REQUEST NUMBER: \_\_\_\_\_ DATE: 00 / 00 / 2014  
 www.nimblewear.com sales@nimblewear.com



Please note that NIMBLEWEAR logo must appear on the side panels.



PRE-DYED LYCRA:



PANTONE® Black C



PANTONE® Red 186C



PANTONE® Dark Navy 2767 C



PANTONE® Navy Blue 2735 C



PANTONE® Light Blue 285 C



PANTONE® Cool Grey 11C



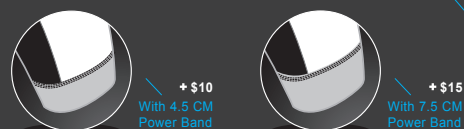
PANTONE® Green 340 C

REAR PANEL

## COLORS USED:



## OTHER OPTIONS FOR LEG HEM:



## FLATLOCK COLOR OPTIONS:



- \* This template can be edited with vector graphic software programs. Adobe Illustrator CS5 is recommended.
- \* All logos must be provided in vector format and all fonts must be converted into outline.
- \* The color on-screen may vary from the finished product. To confirm the color please refer to PANTONE® MATCHING SYSTEM FORMULA GUIDE Solid Coated.
- \* We will try the best to match the PANTONE® colors when printing, but exact matching cannot be guaranteed, due to variation in temperature, humidity and materials.



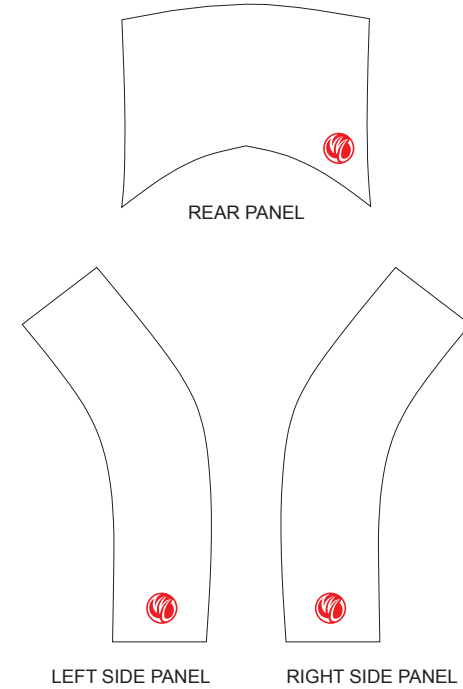
# TAG09A Cycling Shorts

C+2 Style, with Silicon Gripper

CUSTOMER: \_\_\_\_\_ VERSION: 1  
 DESIGN REQUEST NUMBER: \_\_\_\_\_ DATE: 00 / 00 / 2014  
 www.nimblewear.com sales@nimblewear.com



Please note that NIMBLEWEAR logo must appear on the side panels and the back panel.



PRE-DYED LYCRA:



PANTONE® Black C



PANTONE® Red 186C



PANTONE® Dark Navy 2767 C



PANTONE® Navy Blue 2735 C



PANTONE® Light Blue 285 C



PANTONE® Cool Grey 11C



PANTONE® Green 340 C

## COLORS USED:



PANTONE® ? C

PANTONE® ? C

PANTONE® ? C

## OTHER OPTIONS FOR LEG HEM:



+ \$10  
With 4.5 CM Power Band



+ \$15  
With 7.5 CM Power Band

## FLATLOCK COLOR OPTIONS:



- This template can be edited with vector graphic software programs. Adobe Illustrator CS5 is recommended.
- All logos must be provided in vector format and all fonts must be converted into outline.
- The color on-screen may vary from the finished product. To confirm the color please refer to PANTONE® MATCHING SYSTEM FORMULA GUIDE Solid Coated.
- We will try the best to match the PANTONE® colors when printing, but exact matching cannot be guaranteed, due to variation in temperature, humidity and materials.

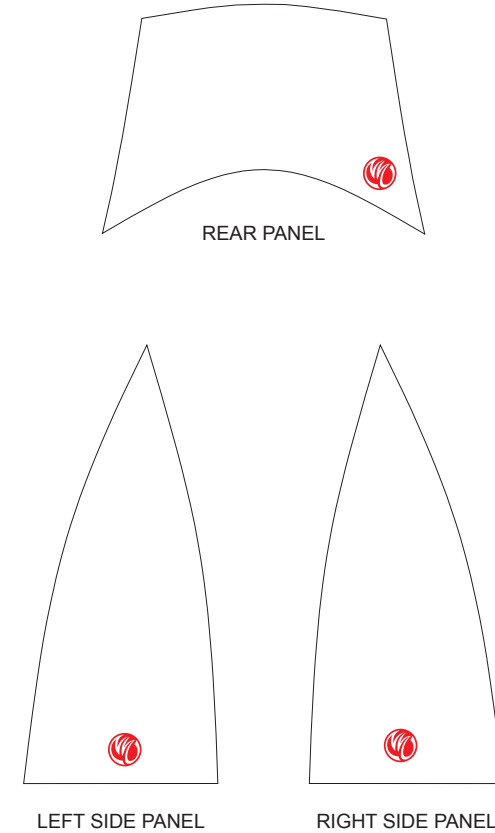
# TAG10A Cycling Shorts

V Style, with Silicon Gripper

CUSTOMER: \_\_\_\_\_ VERSION: 1  
 DESIGN REQUEST NUMBER: \_\_\_\_\_ DATE: 00 / 00 / 2014  
 www.nimblewear.com sales@nimblewear.com



Please note that NIMBLEWEAR logo must appear on the side panels and the back panel.



PRE-DYED LYCRA:



PANTONE® Black C



PANTONE® Red 186C



PANTONE® Dark Navy 2767 C



PANTONE® Navy Blue 2738 C



PANTONE® Light Blue 285 C



PANTONE® Cool Grey 11C



PANTONE® Green 340 C

## COLORS USED:



## OTHER OPTIONS FOR LEG HEM:



+ \$10  
With 4.5 CM Power Band



+ \$15  
With 7.5 CM Power Band

## FLATLOCK COLOR OPTIONS:



\* This template can be edited with vector graphic software programs. Adobe Illustrator CS5 is recommended.  
 \* All logos must be provided in vector format and all fonts must be converted into outline.  
 \* The color on-screen may vary from the finished product. To confirm the color please refer to PANTONE® MATCHING SYSTEM FORMULA GUIDE Solid Coated.  
 \* We will try the best to match the PANTONE® colors when printing, but exact matching cannot be guaranteed, due to variation in temperature, humidity and materials.

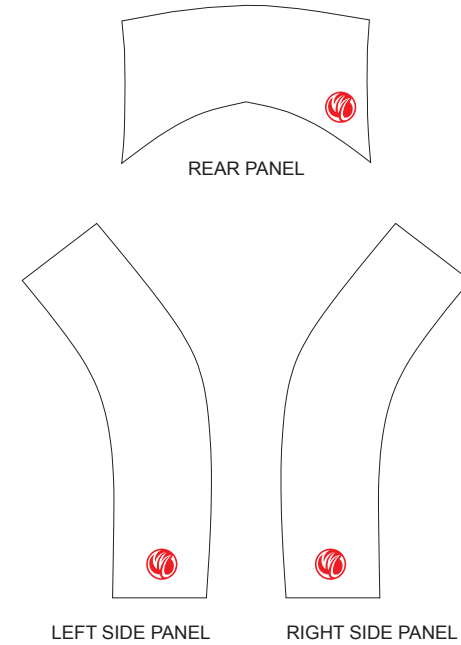
# TAG11AW Cycling Shorts

C Style, with Lycra Waist Band, with Silicon Gripper, WOMEN

CUSTOMER: \_\_\_\_\_ VERSION: 1  
 DESIGN REQUEST NUMBER: \_\_\_\_\_ DATE: 00 / 00 / 2014  
 www.nimblewear.com sales@nimblewear.com



Please note that NIMBLEWEAR logo must appear on the side panels and the back panel.



PRE-DYED LYCRA:



PANTONE® Black C



PANTONE® Red 186C



PANTONE® Dark Navy 2767 C



PANTONE® Navy Blue 2735 C



PANTONE® Light Blue 285 C



PANTONE® Cool Grey 11C



PANTONE® Green 340 C

## COLORS USED:



## OTHER OPTIONS FOR LEG HEM:



+ \$10  
With 4.5 CM Power Band



+ \$15  
With 7.5 CM Power Band

## FLATLOCK COLOR OPTIONS:



• This template can be edited with vector graphic software programs. Adobe Illustrator CS5 is recommended.  
 • All logos must be provided in vector format and all fonts must be converted into outline.  
 • The color on-screen may vary from the finished product. To confirm the color please refer to PANTONE® MATCHING SYSTEM FORMULA GUIDE Solid Coated.  
 • We will try the best to match the PANTONE® colors when printing, but exact matching cannot be guaranteed, due to variation in temperature, humidity and materials.

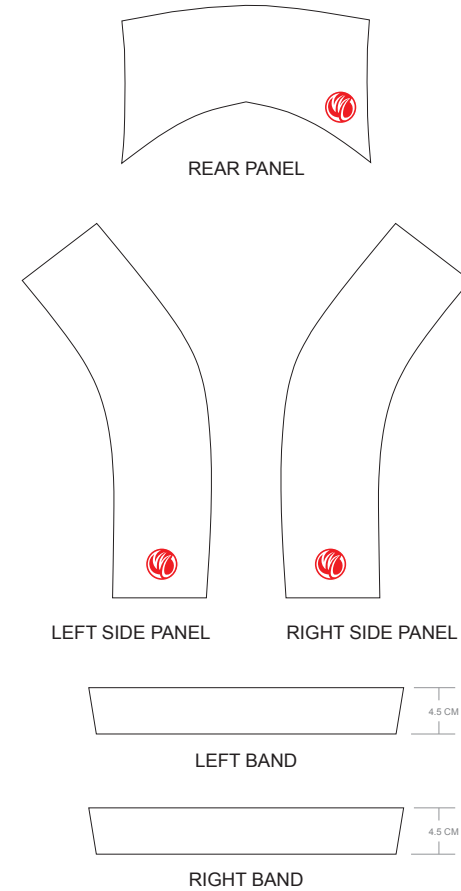
# TAG12AW Cycling Shorts

C Style, with Lycra Waist Band, with 4.5 CM Power Band, WOMEN

CUSTOMER: \_\_\_\_\_ VERSION: 1  
 DESIGN REQUEST NUMBER: \_\_\_\_\_ DATE: 00 / 00 / 2014  
 www.nimblewear.com sales@nimblewear.com



Please note that NIMBLEWEAR logo must appear on the side panels and the back panel. NIMBLEWEAR standard power band for leg hem is 4.5 CM in width. 7.5 CM power band is available upon customer's request.



PRE-DYED LYCRA:



PANTONE® Black C



PANTONE® Red 186C



PANTONE® Dark Navy 2767 C



PANTONE® Navy Blue 2735 C



PANTONE® Light Blue 285 C



PANTONE® Cool Grey 11C



PANTONE® Green 340 C

## COLORS USED:



## OTHER OPTIONS FOR LEG HEM:



With Silicon Gripper



+ \$5  
With 7.5 CM Power Band

## FLATLOCK COLOR OPTIONS:



\* This template can be edited with vector graphic software programs. Adobe Illustrator CS5 is recommended.  
 \* All logos must be provided in vector format and all fonts must be converted into outline.  
 \* The color on-screen may vary from the finished product. To confirm the color please refer to PANTONE® MATCHING SYSTEM FORMULA GUIDE Solid Coated.  
 \* We will try the best to match the PANTONE® colors when printing, but exact matching cannot be guaranteed, due to variation in temperature, humidity and materials.

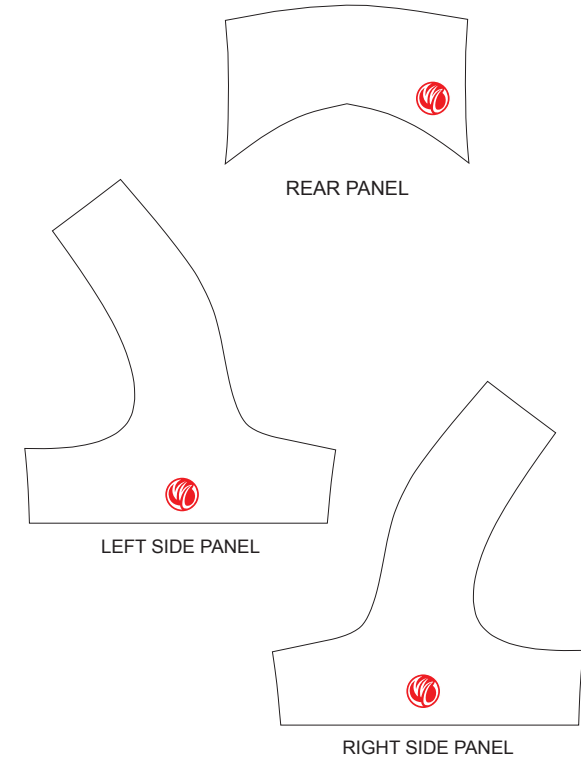
# TAG13AW Cycling Shorts

T Style, with Lycra Waist Band, with Silicon Gripper, WOMEN

CUSTOMER: \_\_\_\_\_ VERSION: 1  
 DESIGN REQUEST NUMBER: \_\_\_\_\_ DATE: 00 / 00 / 2014  
 www.nimblewear.com sales@nimblewear.com



Please note that NIMBLEWEAR logo must appear on the side panels and the back panel.



PRE-DYED LYCRA:



PANTONE® Black C



PANTONE® Red 186C



PANTONE® Dark Navy 2767 C



PANTONE® Navy Blue 2738 C



PANTONE® Light Blue 285 C



PANTONE® Cool Grey 11C



PANTONE® Green 340 C

## COLORS USED:



## OTHER OPTIONS FOR LEG HEM:



+ \$10  
With 4.5 CM Power Band



+ \$15  
With 7.5 CM Power Band

## FLATLOCK COLOR OPTIONS:



- This template can be edited with vector graphic software programs. Adobe Illustrator CS5 is recommended.
- All logos must be provided in vector format and all fonts must be converted into outline.
- The color on-screen may vary from the finished product. To confirm the color please refer to PANTONE® MATCHING SYSTEM FORMULA GUIDE Solid Coated.
- We will try the best to match the PANTONE® colors when printing, but exact matching cannot be guaranteed, due to variation in temperature, humidity and materials.

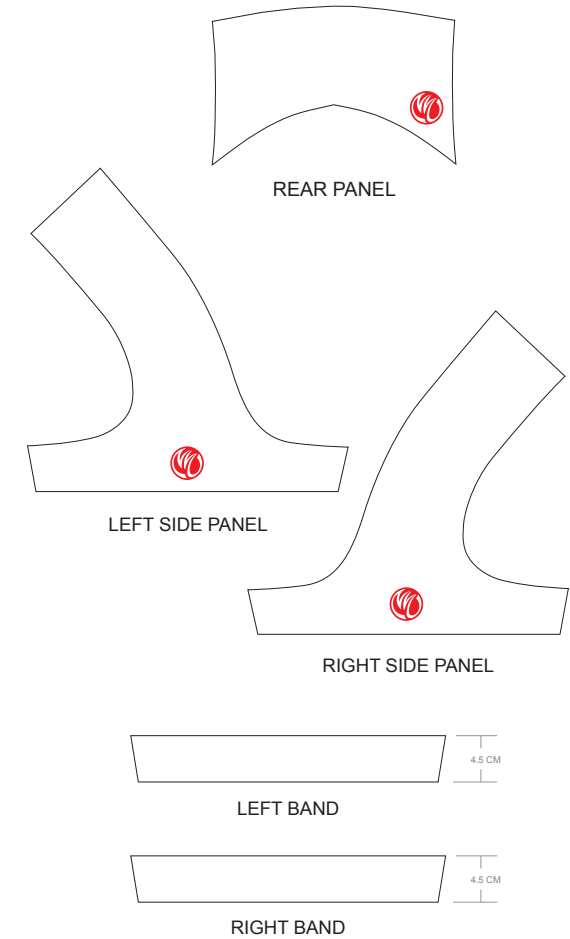
# TAG14AW Cycling Shorts

T Style, with Lycra Waist Band, with 4.5 CM Power Band, WOMEN

CUSTOMER: \_\_\_\_\_ VERSION: 1  
 DESIGN REQUEST NUMBER: \_\_\_\_\_ DATE: 00 / 00 / 2014  
 www.nimblewear.com sales@nimblewear.com



Please note that NIMBLEWEAR logo must appear on the side panels and the back panel. NIMBLEWEAR standard power band for leg hem is 4.5 CM in width. 7.5 CM power band is available upon customer's request.



PRE-DYED LYCRA:



PANTONE® Black C



PANTONE® Red 186C



PANTONE® Dark Navy 2767 C



PANTONE® Navy Blue 2735 C



PANTONE® Light Blue 285 C



PANTONE® Cool Grey 11C



PANTONE® Green 340 C

## COLORS USED:



## OTHER OPTIONS FOR LEG HEM:



With Silicon Gripper



+ \$5  
With 7.5 CM Power Band

## FLATLOCK COLOR OPTIONS:



\* This template can be edited with vector graphic software programs. Adobe Illustrator CS5 is recommended.  
 \* All logos must be provided in vector format and all fonts must be converted into outline.  
 \* The color on-screen may vary from the finished product. To confirm the color please refer to PANTONE® MATCHING SYSTEM FORMULA GUIDE Solid Coated.  
 \* We will try the best to match the PANTONE® colors when printing, but exact matching cannot be guaranteed, due to variation in temperature, humidity and materials.

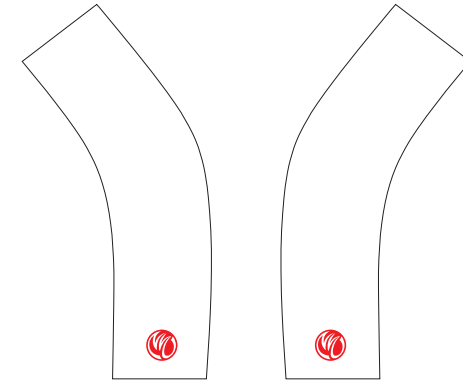
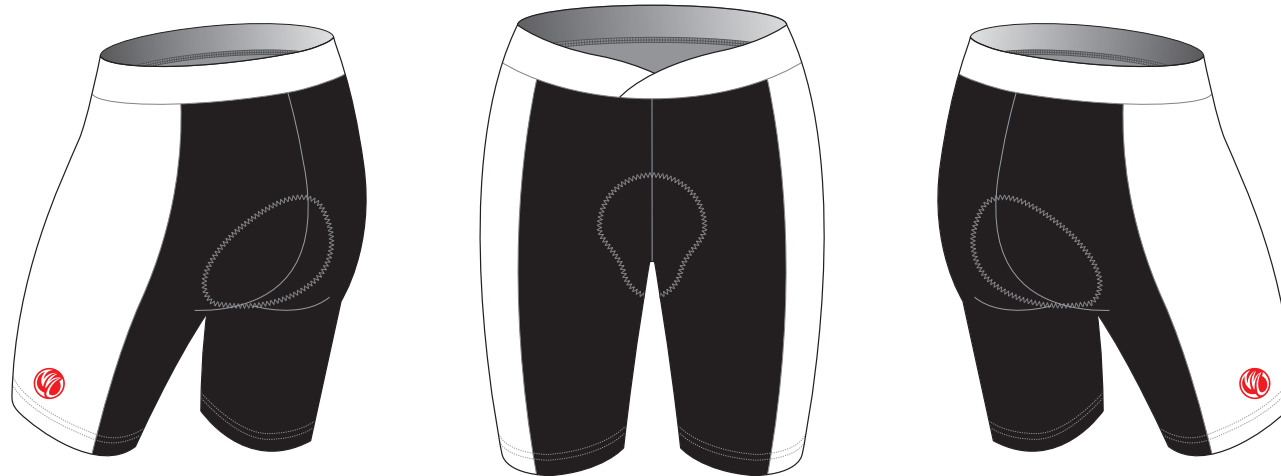
# TAG15BW Cycling Shorts

FASHION, with Lycra Waist Band, with Silicon Gripper, WOMEN

CUSTOMER: \_\_\_\_\_ VERSION: 1  
 DESIGN REQUEST NUMBER: \_\_\_\_\_ DATE: 00 / 00 / 2014  
 www.nimblewear.com sales@nimblewear.com



Please note that NIMBLEWEAR logo must appear on the side panels.



LEFT SIDE PANEL

RIGHT SIDE PANEL

PRE-DYED LYCRA:



PANTONE® Black C



PANTONE® Red 186C



PANTONE® Dark Navy 2767 C



PANTONE® Navy Blue 2735 C



PANTONE® Light Blue 285 C



PANTONE® Cool Grey 11C



PANTONE® Green 340 C

## COLORS USED:



## OTHER OPTIONS FOR LEG HEM:



+ \$10  
With 4.5 CM Power Band



+ \$15  
With 7.5 CM Power Band

## FLATLOCK COLOR OPTIONS:



- This template can be edited with vector graphic software programs. Adobe Illustrator CS5 is recommended.
- All logos must be provided in vector format and all fonts must be converted into outline.
- The color on-screen may vary from the finished product. To confirm the color please refer to PANTONE® MATCHING SYSTEM FORMULA GUIDE Solid Coated.
- We will try the best to match the PANTONE® colors when printing, but exact matching cannot be guaranteed, due to variation in temperature, humidity and materials.

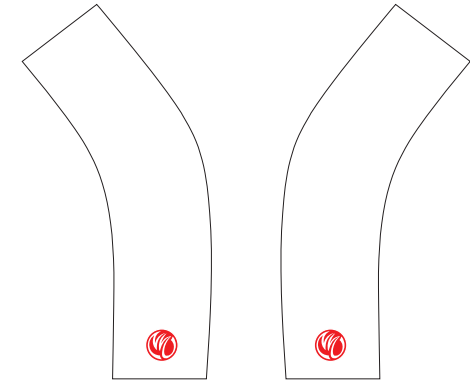
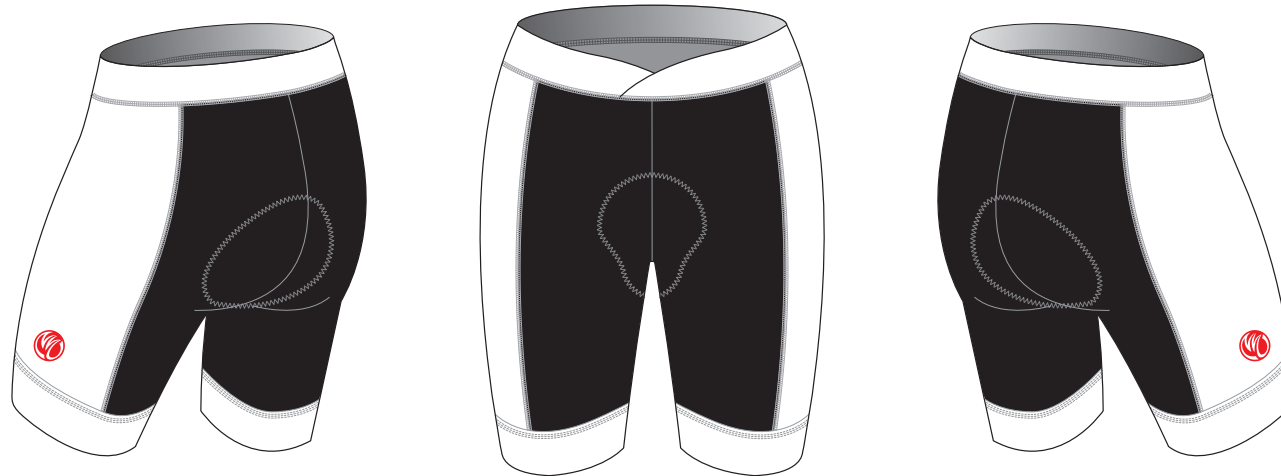
# TAG16BW Cycling Shorts

FASHION, with Lycra Waist Band, with 4.5 CM Power Band, WOMEN

CUSTOMER: \_\_\_\_\_ VERSION: 1  
 DESIGN REQUEST NUMBER: \_\_\_\_\_ DATE: 00 / 00 / 2014  
 www.nimblewear.com sales@nimblewear.com



Please note that NIMBLEWEAR logo must appear on the side panels. NIMBLEWEAR standard power band for leg hem is 4.5 CM in width. 7.5 CM power band is available upon customer's request.



LEFT SIDE PANEL

RIGHT SIDE PANEL



LEFT BAND



RIGHT BAND

PRE-DYED LYCRA:



PANTONE® Black C



PANTONE® Red 186C



PANTONE® Dark Navy 2767 C



PANTONE® Navy Blue 2735 C



PANTONE® Light Blue 285 C



PANTONE® Cool Grey 11C



PANTONE® Green 340 C

## COLORS USED:



## OTHER OPTIONS FOR LEG HEM:



With Silicon Gripper



+ \$5  
With 7.5 CM Power Band

## FLATLOCK COLOR OPTIONS:



• This template can be edited with vector graphic software programs. Adobe Illustrator CS5 is recommended.  
 • All logos must be provided in vector format and all fonts must be converted into outline.  
 • The color on-screen may vary from the finished product. To confirm the color please refer to PANTONE® MATCHING SYSTEM FORMULA GUIDE Solid Coated.  
 • We will try the best to match the PANTONE® colors when printing, but exact matching cannot be guaranteed, due to variation in temperature, humidity and materials.



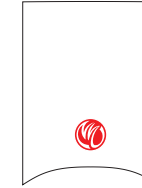
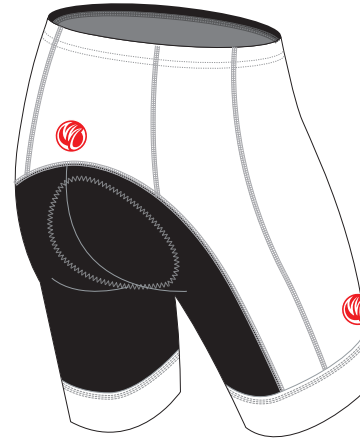
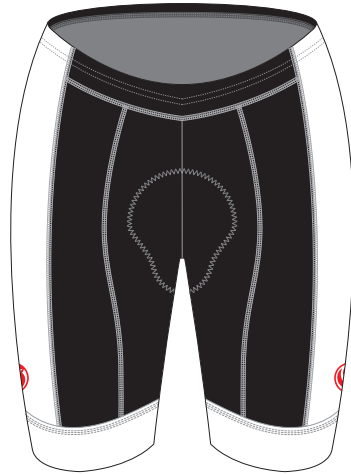
# TAG17C Cycling Shorts

FONDO, with 4.5 CM Power Band

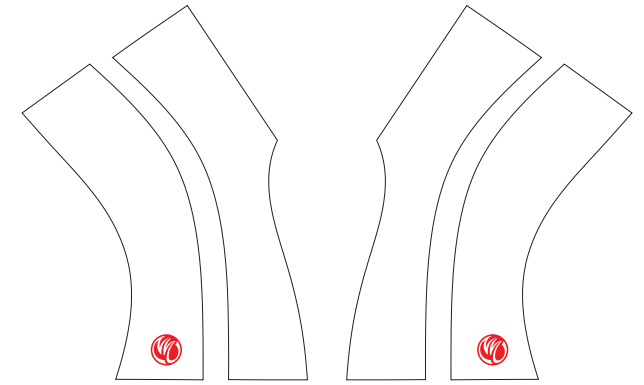
CUSTOMER: \_\_\_\_\_ VERSION: 1  
 DESIGN REQUEST NUMBER: \_\_\_\_\_ DATE: 00 / 00 / 2014  
 www.nimblewear.com sales@nimblewear.com



Please note that NIMBLEWEAR logo must appear on the side panels and the back panel. NIMBLEWEAR standard power band for leg hem is 4.5 CM in width. 7.5 CM power band is available upon customer's request.



REAR PANEL



LEFT SIDE PANEL

RIGHT SIDE PANEL



LEFT BAND



RIGHT BAND

PRE-DYED LYCRA:

PANTONE® Black C

PANTONE® Red 186C

PANTONE® Dark Navy 2787 C

PANTONE® Navy Blue 2736 C

PANTONE® Light Blue 285 C

PANTONE® Cool Grey 11C

PANTONE® Green 340 C

## COLORS USED:



## OTHER OPTIONS FOR LEG HEM:



With Silicon Gripper



+ \$5  
With 7.5 CM Power Band

## FLATLOCK COLOR OPTIONS:



\* This template can be edited with vector graphic software programs. Adobe Illustrator CS5 is recommended.  
 \* All logos must be provided in vector format and all fonts must be converted into outline.  
 \* The color on-screen may vary from the finished product. To confirm the color please refer to PANTONE® MATCHING SYSTEM FORMULA GUIDE Solid Coated.  
 \* We will try the best to match the PANTONE® colors when printing, but exact matching cannot be guaranteed, due to variation in temperature, humidity and materials.