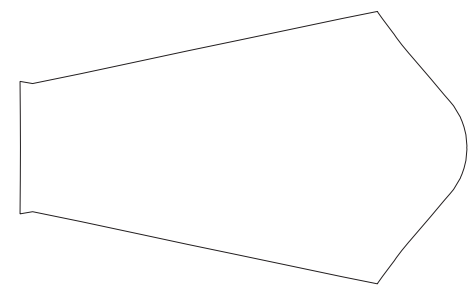


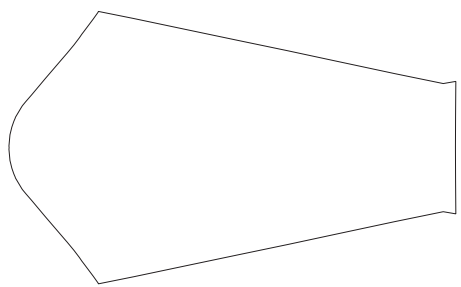
# GFA01 Casual Jacket

Set-in Sleeve, with 2 Hand Pockets

www.nimblewear.com  
www.nimblewear.net



RIGHT SLEEVE



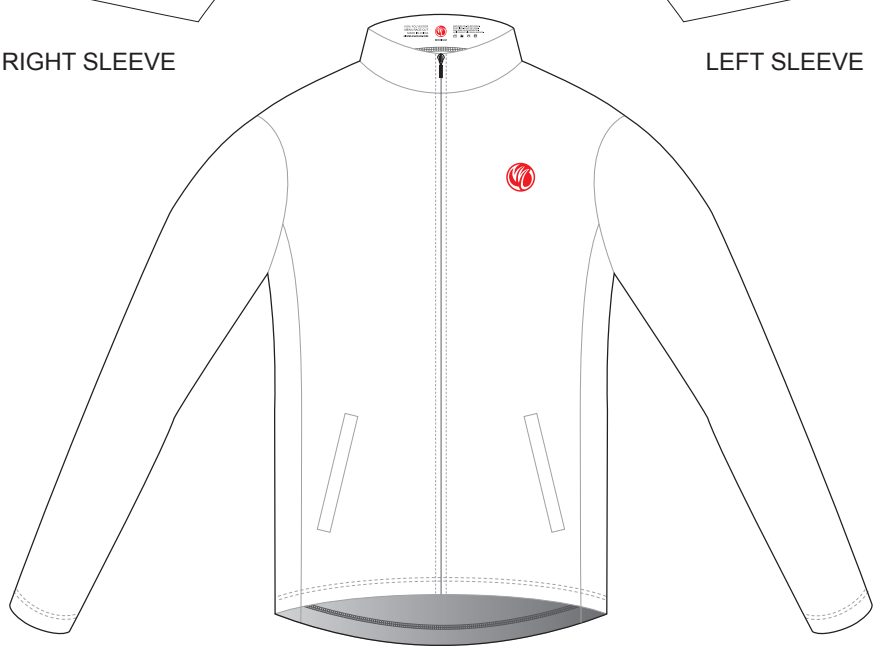
LEFT SLEEVE



COLLAR



RIGHT SIDE PANEL



FRONT



LEFT SIDE PANEL



BACK

**COLORS USED:**



**CUSTOMER:** \_\_\_\_\_

**DESIGN REQUEST NUMBER:** \_\_\_\_\_

**VERSION:** 1

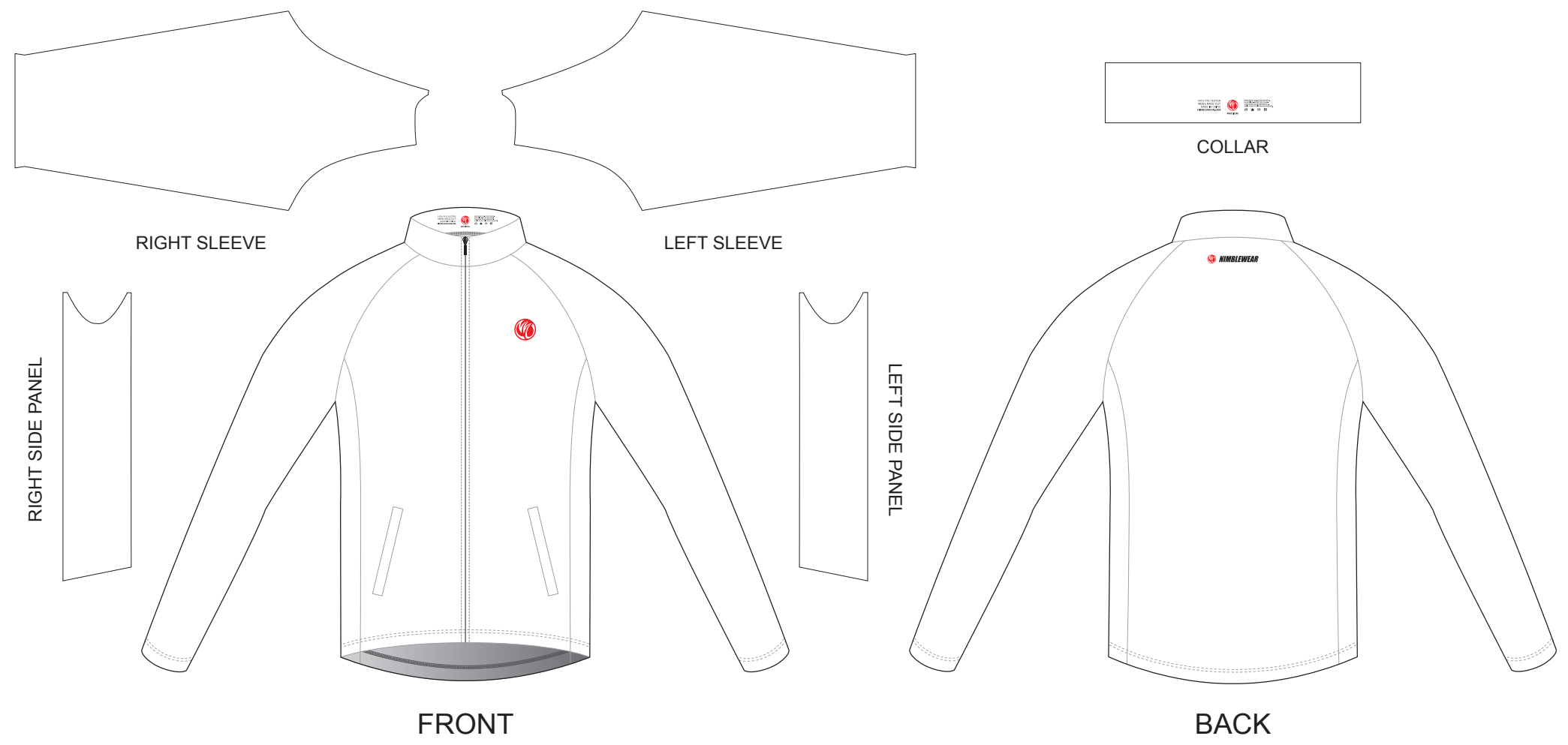
**DATE:** 00 / 00 / 2013

- This template can be edited with vector graphic software programs. Adobe Illustrator CS5 is recommended.
- All logos must be provided in vector format and all fonts must be converted into outline.
- The color on-screen may vary from the finished product. To confirm the color please refer to PANTONE® MATCHING SYSTEM FORMULA GUIDE Solid Coated.
- We will try the best to match the PANTONE® colors when printing, but exact matching cannot be guaranteed, due to variation in temperature, humidity and materials.

# GFA02 Casual Jacket

Raglan Sleeve, with 2 Hand Pockets

www.nimblewear.com  
www.nimblewear.net



**COLORS USED:**



**CUSTOMER:** \_\_\_\_\_  
**DESIGN REQUEST NUMBER:** \_\_\_\_\_  
**VERSION:** 1  
**DATE:** 00 / 00 / 2013

• This template can be edited with vector graphic software programs. Adobe Illustrator CS5 is recommended.  
 • All logos must be provided in vector format and all fonts must be converted into outline.  
 • The color on-screen may vary from the finished product. To confirm the color please refer to PANTONE® MATCHING SYSTEM FORMULA GUIDE Solid Coated.  
 • We will try the best to match the PANTONE® colors when printing, but exact matching cannot be guaranteed, due to variation in temperature, humidity and materials.