

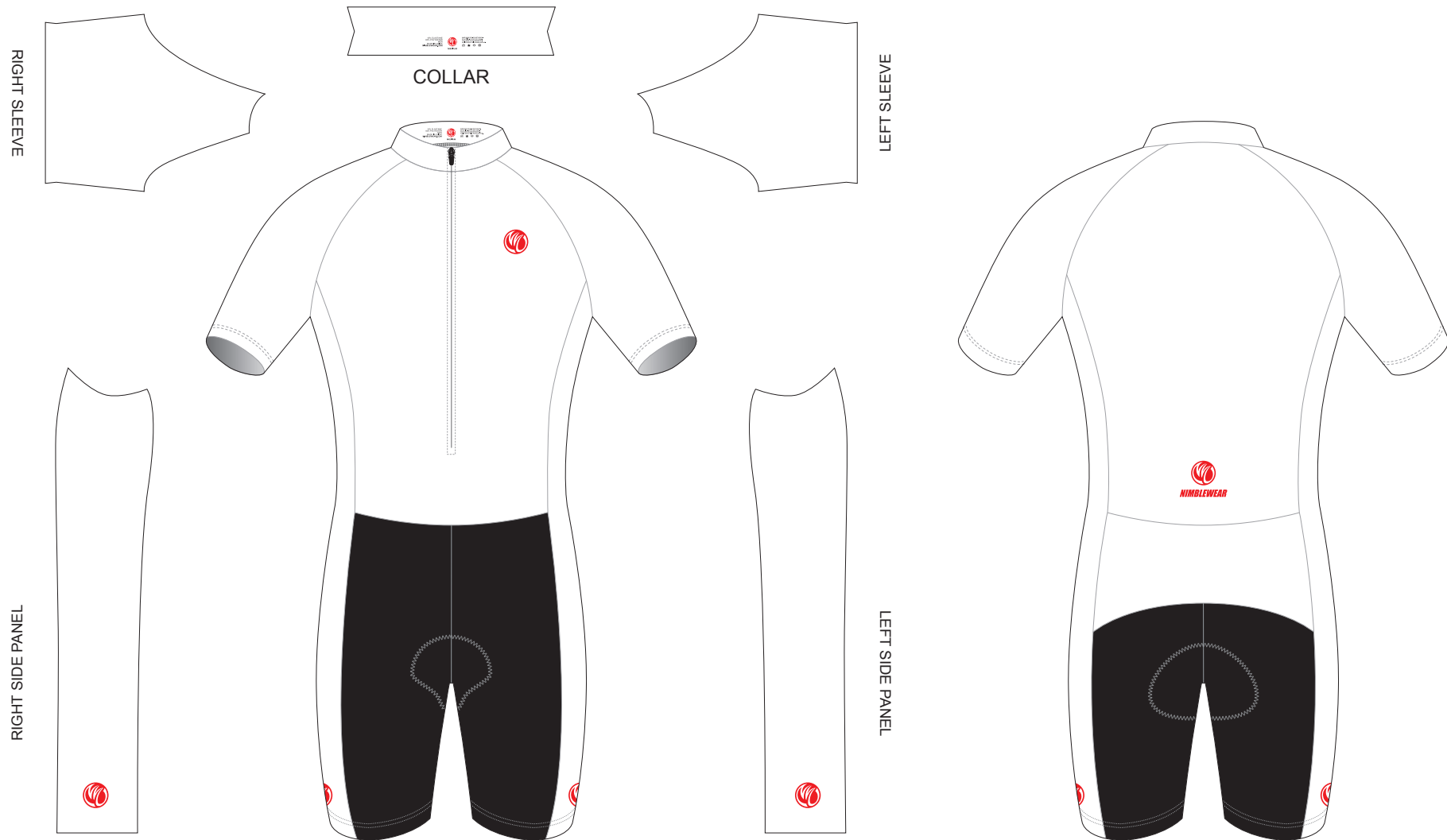
TAK01A Short Sleeve Cycling Speed Skinsuit

C Style, with Collar, with Silicon Gripper

CUSTOMER: _____ VERSION: 1
 DESIGN REQUEST NUMBER: _____ DATE: 00 / 00 / 2014
 www.nimblewear.com sales@nimblewear.com



Please note that NIMBLEWEAR logo must appear on the upper chest area (left or right), side panels and on the center of lower back for all the suits.



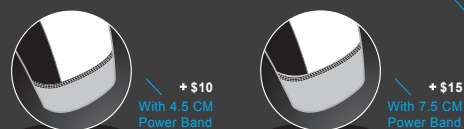
PRE-DYED LYCRA:

- PANTONE® Black C
- PANTONE® Red 186C
- PANTONE® Dark Navy 2767 C
- PANTONE® Navy Blue 2738 C
- PANTONE® Light Blue 285 C
- PANTONE® Cool Grey 11C
- PANTONE® Green 340 C

COLORS USED:



OTHER OPTIONS FOR LEG HEM:



FLATLOCK COLOR OPTIONS:



* This template can be edited with vector graphic software programs. Adobe Illustrator CS5 is recommended.
 * All logos must be provided in vector format and all fonts must be converted into outline.
 * The color on-screen may vary from the finished product. To confirm the color please refer to PANTONE® MATCHING SYSTEM FORMULA GUIDE Solid Coated.
 * We will try the best to match the PANTONE® colors when printing, but exact matching cannot be guaranteed, due to variation in temperature, humidity and materials.

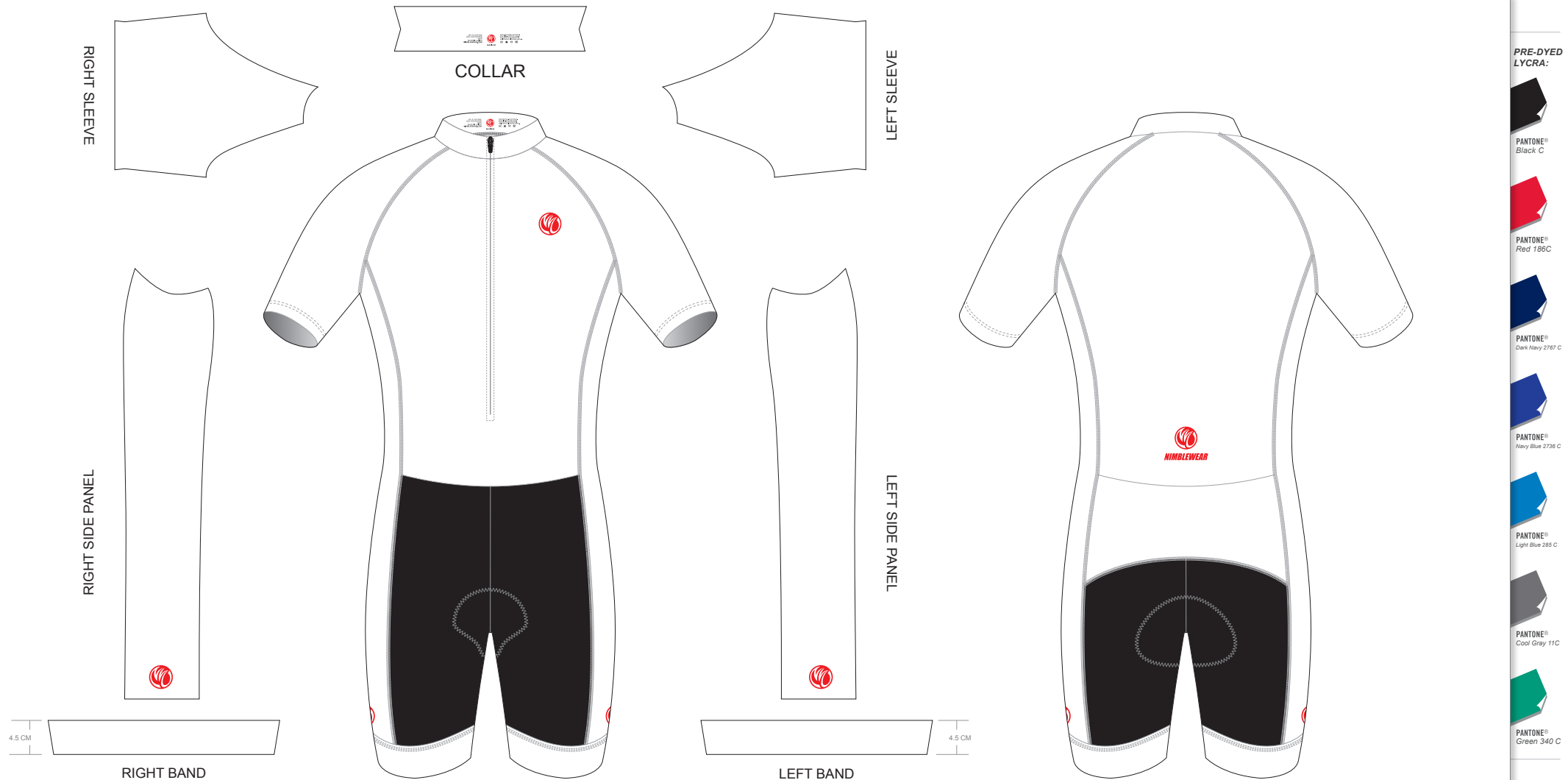
TAK02A Short Sleeve Cycling Speed Skinsuit

C Style, with Collar, with 4.5 CM Power Band

CUSTOMER: _____ VERSION: 1
 DESIGN REQUEST NUMBER: _____ DATE: 00 / 00 / 2014
 www.nimblewear.com sales@nimblewear.com



Please note that NIMBLEWEAR logo must appear on the upper chest area (left or right), side panels and on the center of lower back for all the suits. NIMBLEWEAR standard power band for bib shorts is 4.5 CM in width. 7.5 CM power band is available upon customer's request.



PRE-DYED LYCRA:



PANTONE® Black C



PANTONE® Red 186C



PANTONE® Dark Navy 2767 C



PANTONE® Navy Blue 2738 C



PANTONE® Light Blue 285 C



PANTONE® Cool Grey 11C



PANTONE® Green 340 C

COLORS USED:



OTHER OPTIONS FOR LEG HEM:



With Silicon Gripper



+ \$5
With 7.5 CM Power Band

FLATLOCK COLOR OPTIONS:



* This template can be edited with vector graphic software programs. Adobe Illustrator CS5 is recommended.
 * All logos must be provided in vector format and all fonts must be converted into outline.
 * The color on-screen may vary from the finished product. To confirm the color please refer to PANTONE® MATCHING SYSTEM FORMULA GUIDE Solid Coated.
 * We will try the best to match the PANTONE® colors when printing, but exact matching cannot be guaranteed, due to variation in temperature, humidity and materials.

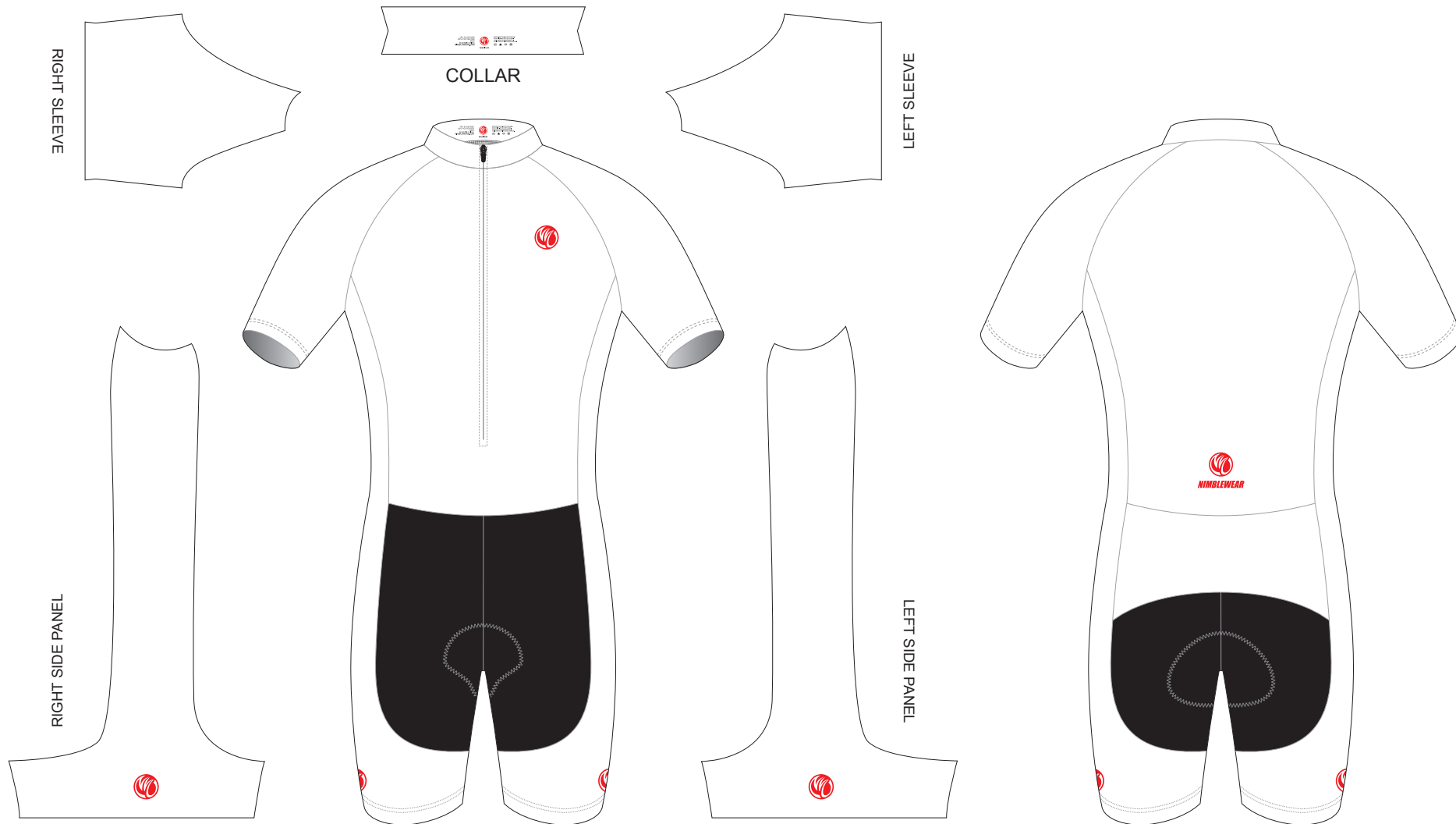
TAK03A Short Sleeve Cycling Speed Skinsuit

T Style, with Collar, with Silicon Gripper

CUSTOMER: _____ VERSION: 1
 DESIGN REQUEST NUMBER: _____ DATE: 00 / 00 / 2014
 www.nimblewear.com sales@nimblewear.com



Please note that NIMBLEWEAR logo must appear on the upper chest area (left or right), side panels and on the center of lower back for all the suits.



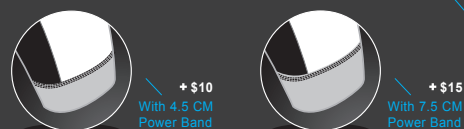
PRE-DYED LYCRA:



COLORS USED:



OTHER OPTIONS FOR LEG HEM:



FLATLOCK COLOR OPTIONS:



* This template can be edited with vector graphic software programs. Adobe Illustrator CS5 is recommended.
 * All logos must be provided in vector format and all fonts must be converted into outline.
 * The color on-screen may vary from the finished product. To confirm the color please refer to PANTONE[®] MATCHING SYSTEM FORMULA GUIDE Solid Coated.
 * We will try the best to match the PANTONE[®] colors when printing, but exact matching cannot be guaranteed, due to variation in temperature, humidity and materials.

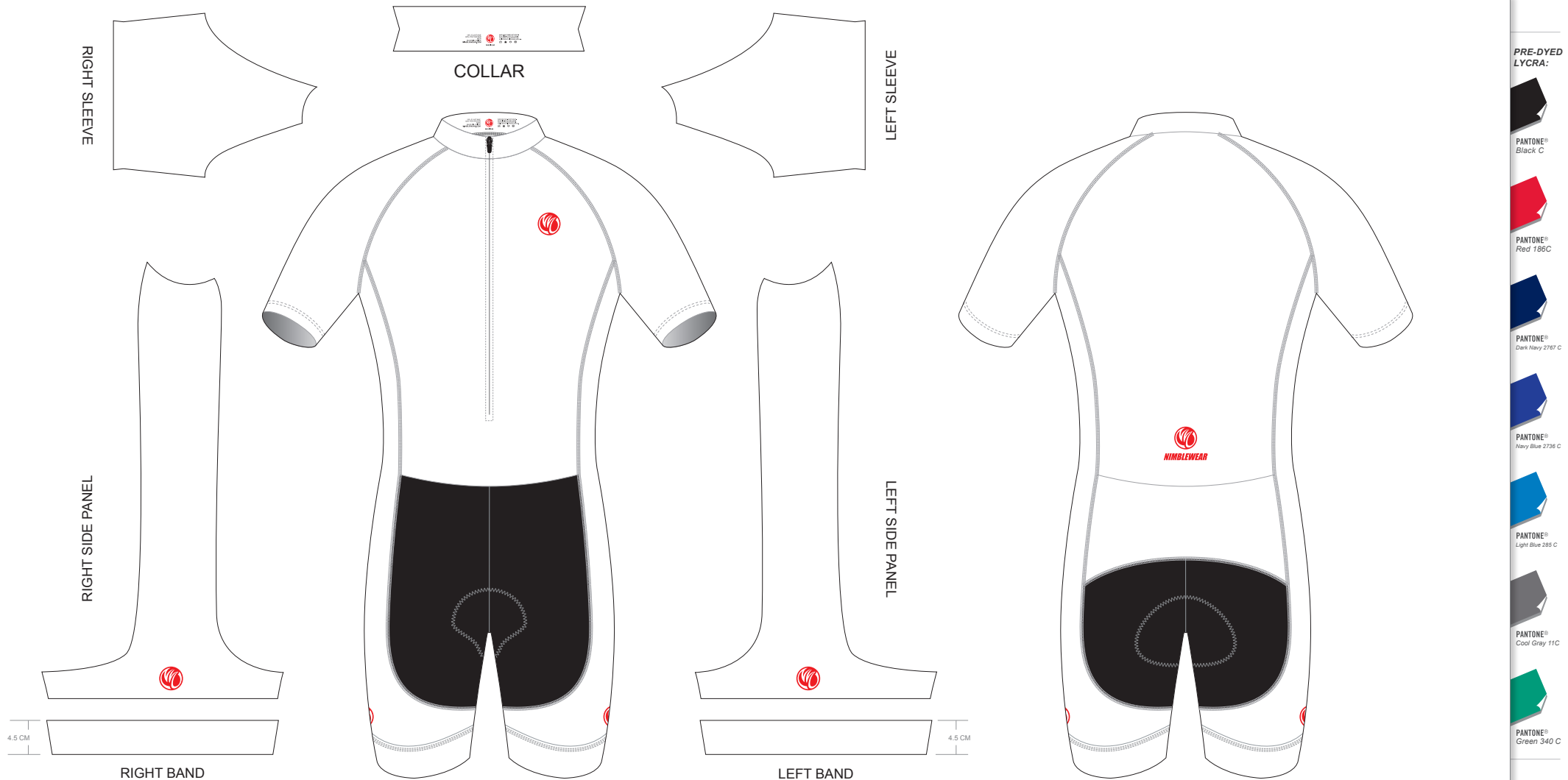
TAK04A Short Sleeve Cycling Speed Skinsuit

T Style, with Collar, with 4.5 CM Power Band

CUSTOMER: _____ VERSION: 1
 DESIGN REQUEST NUMBER: _____ DATE: 00 / 00 / 2014
 www.nimblewear.com sales@nimblewear.com



Please note that NIMBLEWEAR logo must appear on the upper chest area (left or right), side panels and on the center of lower back for all the suits. NIMBLEWEAR standard power band for bib shorts is 4.5 CM in width. 7.5 CM power band is available upon customer's request.



PRE-DYED LYCRA:

- PANTONE® Black C
- PANTONE® Red 186C
- PANTONE® Dark Navy 2767 C
- PANTONE® Navy Blue 2739 C
- PANTONE® Light Blue 285 C
- PANTONE® Cool Grey 11C
- PANTONE® Green 340 C

COLORS USED:



OTHER OPTIONS FOR LEG HEM:



FLATLOCK COLOR OPTIONS:



* This template can be edited with vector graphic software programs. Adobe Illustrator CS5 is recommended.
 * All logos must be provided in vector format and all fonts must be converted into outline.
 * The color on-screen may vary from the finished product. To confirm the color please refer to PANTONE® MATCHING SYSTEM FORMULA GUIDE Solid Coated.
 * We will try the best to match the PANTONE® colors when printing, but exact matching cannot be guaranteed, due to variation in temperature, humidity and materials.

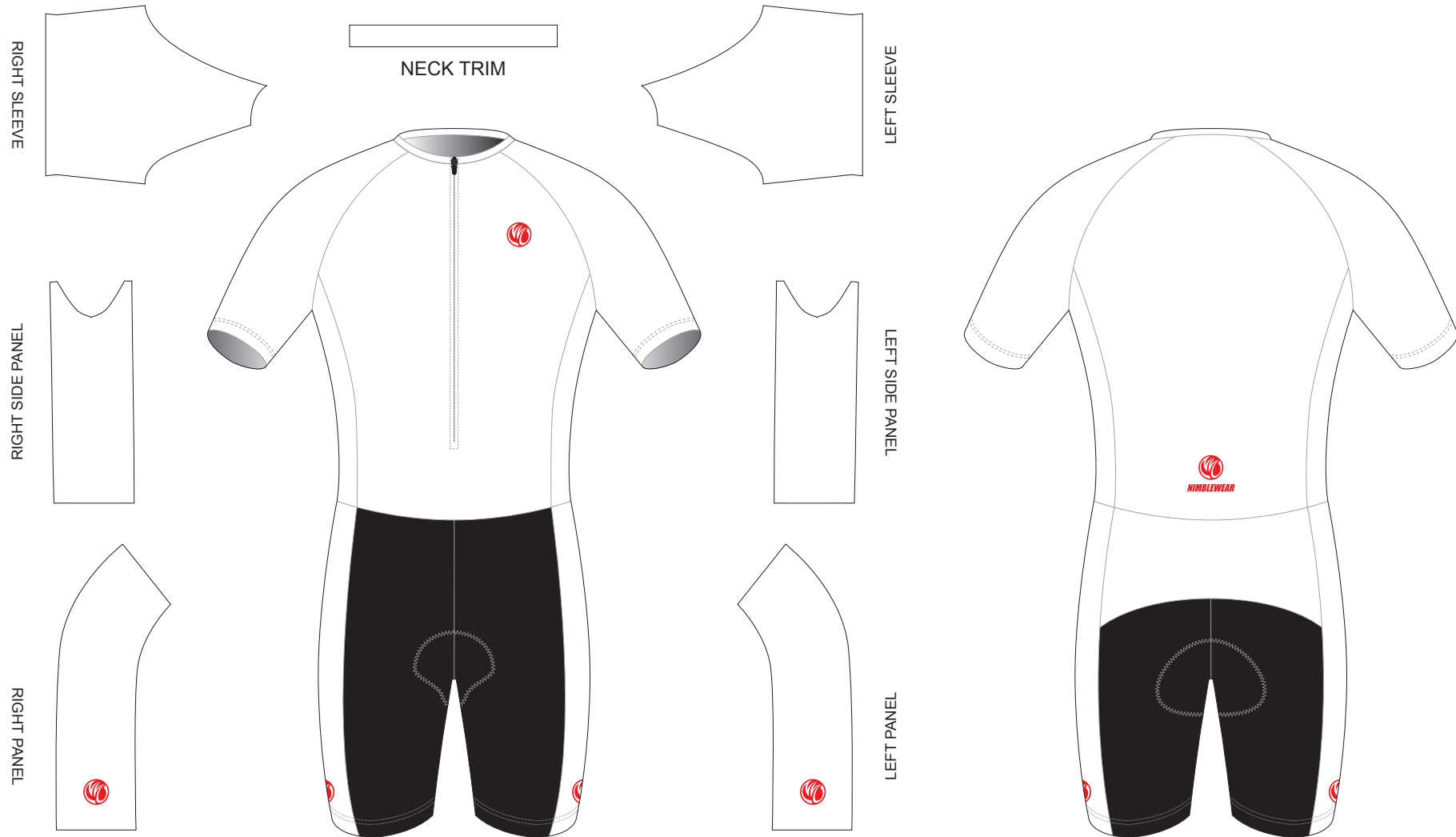
TAK05A Short Sleeve Cycling Speed Skinsuit

C Style, without Collar, with Silicon Gripper

CUSTOMER: _____ VERSION: 1
 DESIGN REQUEST NUMBER: _____ DATE: 00 / 00 / 2014
 www.nimblewear.com sales@nimblewear.com



Please note that NIMBLEWEAR logo must appear on the upper chest area (left or right), side panels and on the center of lower back for all the suits.



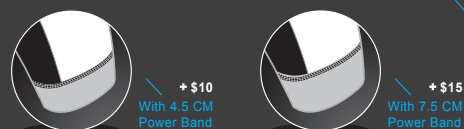
PRE-DYED LYCRA:

- PANTONE® Black C
- PANTONE® Red 186C
- PANTONE® Dark Navy 2767 C
- PANTONE® Navy Blue 2738 C
- PANTONE® Light Blue 285 C
- PANTONE® Cool Grey 11C
- PANTONE® Green 340 C

COLORS USED:



OTHER OPTIONS FOR LEG HEM:



FLATLOCK COLOR OPTIONS:



* This template can be edited with vector graphic software programs. Adobe Illustrator CS5 is recommended.
 * All logos must be provided in vector format and all fonts must be converted into outline.
 * The color on-screen may vary from the finished product. To confirm the color please refer to PANTONE® MATCHING SYSTEM FORMULA GUIDE Solid Coated.
 * We will try the best to match the PANTONE® colors when printing, but exact matching cannot be guaranteed, due to variation in temperature, humidity and materials.

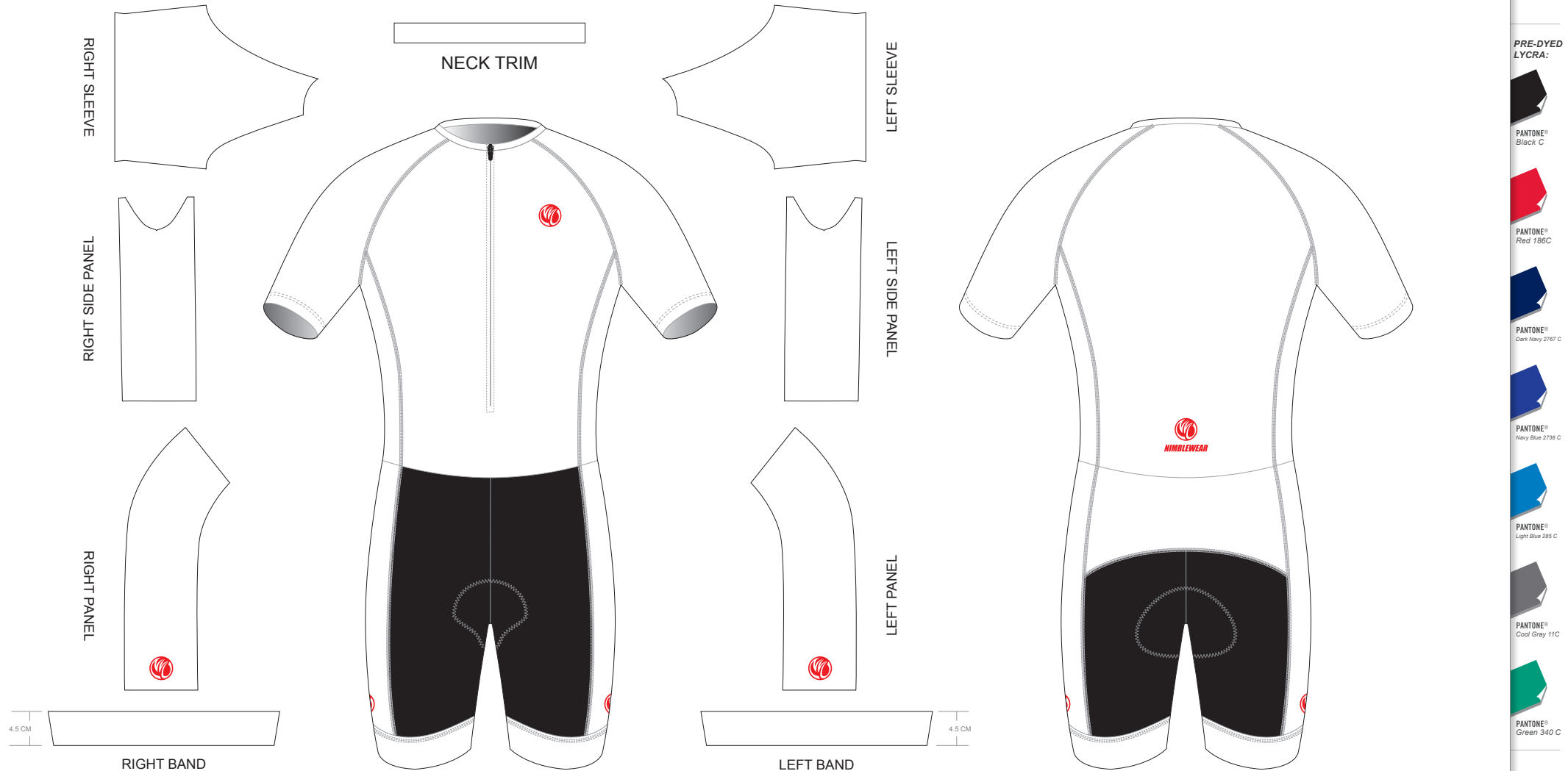
TAK06A Short Sleeve Cycling Speed Skinsuit

C Style, without Collar, with 4.5 CM Power Band

CUSTOMER: _____ VERSION: 1
 DESIGN REQUEST NUMBER: _____ DATE: 00 / 00 / 2014
 www.nimblewear.com sales@nimblewear.com



Please note that NIMBLEWEAR logo must appear on the upper chest area (left or right), side panels and on the center of lower back for all the suits. NIMBLEWEAR standard power band for bib shorts is 4.5 CM in width. 7.5 CM power band is available upon customer's request.



PRE-DYED LYCRA:

- PANTONE® Black C
- PANTONE® Red 186C
- PANTONE® Dark Navy 2767 C
- PANTONE® Navy Blue 2739 C
- PANTONE® Light Blue 285 C
- PANTONE® Cool Grey 11C
- PANTONE® Green 340 C

COLORS USED:



OTHER OPTIONS FOR LEG HEM:



FLATLOCK COLOR OPTIONS:



• This template can be edited with vector graphic software programs. Adobe Illustrator CS5 is recommended.
 • All logos must be provided in vector format and all fonts must be converted into outline.
 • The color on-screen may vary from the finished product. To confirm the color please refer to PANTONE® MATCHING SYSTEM FORMULA GUIDE Solid Coated.
 • We will try the best to match the PANTONE® colors when printing, but exact matching cannot be guaranteed, due to variation in temperature, humidity and materials.

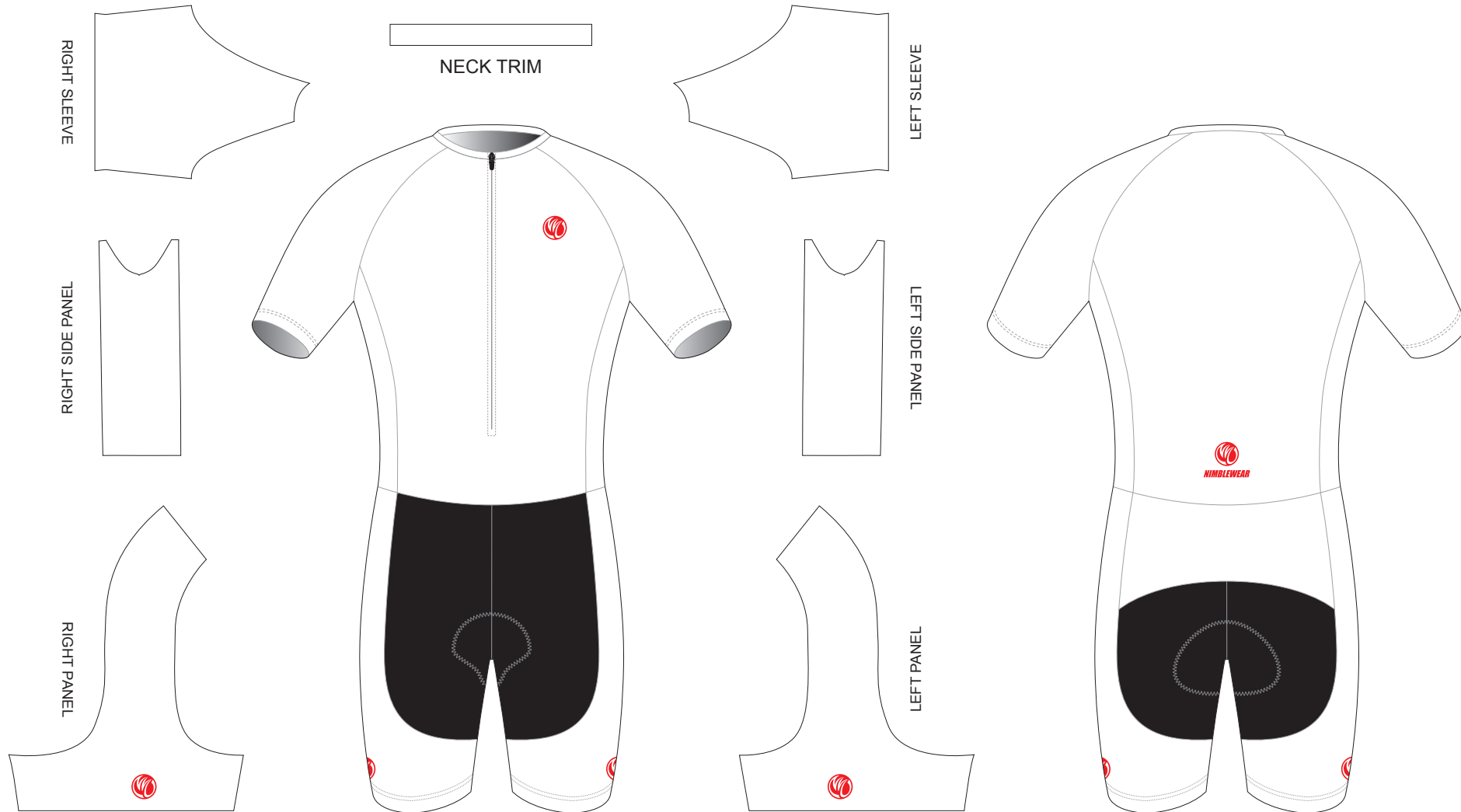
TAK07A Short Sleeve Cycling Speed Skinsuit

T Style, without Collar, with Silicon Gripper

CUSTOMER: _____ VERSION: 1
 DESIGN REQUEST NUMBER: _____ DATE: 00 / 00 / 2014
 www.nimblewear.com sales@nimblewear.com



Please note that NIMBLEWEAR logo must appear on the upper chest area (left or right), side panels and on the center of lower back for all the suits.



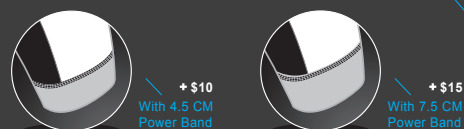
PRE-DYED LYCRA:

- PANTONE® Black C
- PANTONE® Red 186C
- PANTONE® Dark Navy 2767 C
- PANTONE® Navy Blue 2738 C
- PANTONE® Light Blue 285 C
- PANTONE® Cool Grey 11C
- PANTONE® Green 340 C

COLORS USED:



OTHER OPTIONS FOR LEG HEM:



FLATLOCK COLOR OPTIONS:



• This template can be edited with vector graphic software programs. Adobe Illustrator CS5 is recommended.
 • All logos must be provided in vector format and all fonts must be converted into outline.
 • The color on-screen may vary from the finished product. To confirm the color please refer to PANTONE® MATCHING SYSTEM FORMULA GUIDE Solid Coated.
 • We will try the best to match the PANTONE® colors when printing, but exact matching cannot be guaranteed, due to variation in temperature, humidity and materials.

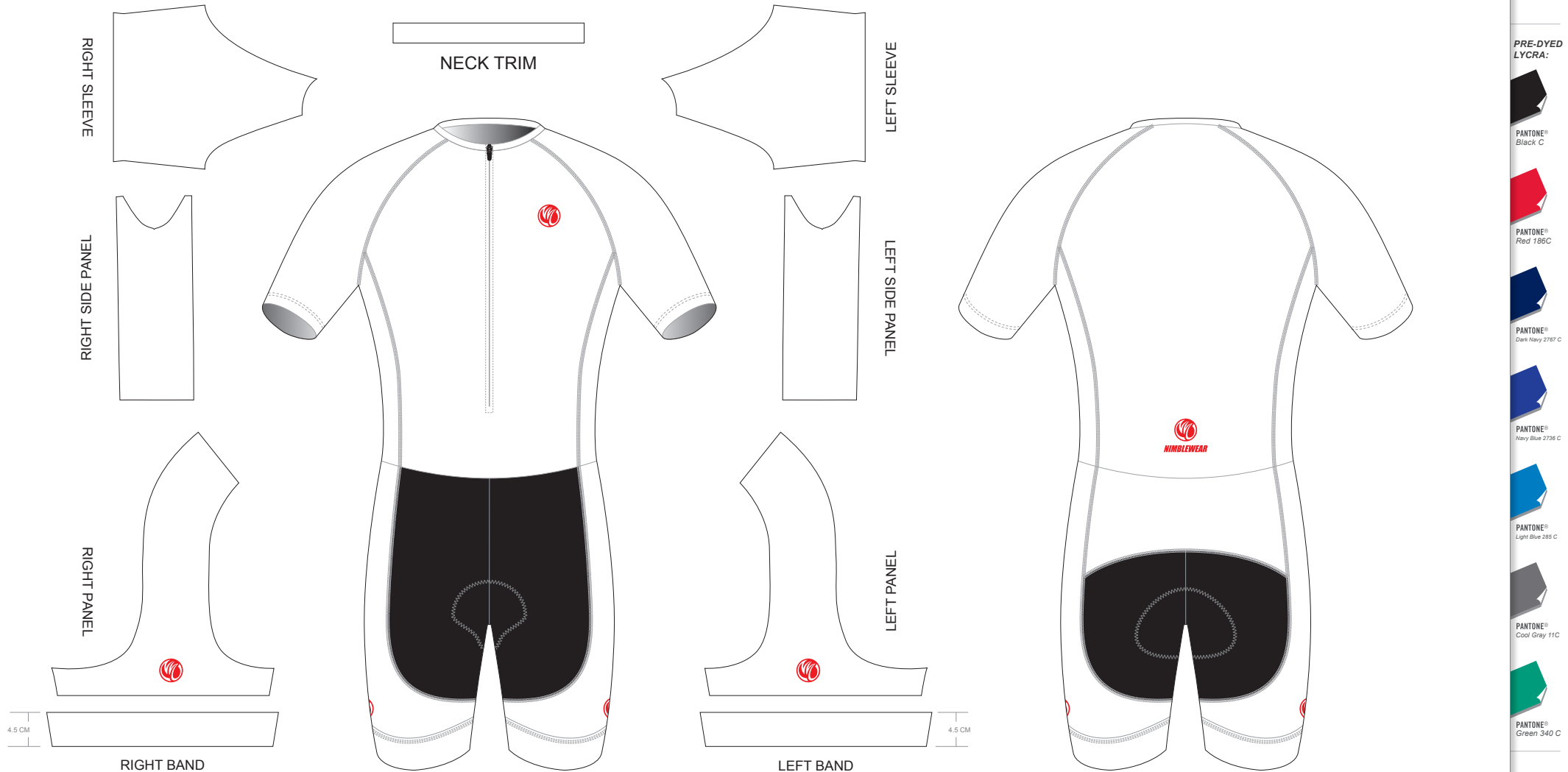
TAK08A Short Sleeve Cycling Speed Skinsuit

T Style, without Collar, with 4.5 CM Power Band

CUSTOMER: _____ VERSION: 1
 DESIGN REQUEST NUMBER: _____ DATE: 00 / 00 / 2014
 www.nimblewear.com sales@nimblewear.com



Please note that NIMBLEWEAR logo must appear on the upper chest area (left or right), side panels and on the center of lower back for all the suits. NIMBLEWEAR standard power band for bib shorts is 4.5 CM in width. 7.5 CM power band is available upon customer's request.



PRE-DYED LYCRA:

- PANTONE® Black C
- PANTONE® Red 186C
- PANTONE® Dark Navy 2767 C
- PANTONE® Navy Blue 2739 C
- PANTONE® Light Blue 285 C
- PANTONE® Cool Grey 11C
- PANTONE® Green 340 C

COLORS USED:



OTHER OPTIONS FOR LEG HEM:



FLATLOCK COLOR OPTIONS:



* This template can be edited with vector graphic software programs. Adobe Illustrator CS5 is recommended.
 * All logos must be provided in vector format and all fonts must be converted into outline.
 * The color on-screen may vary from the finished product. To confirm the color please refer to PANTONE® MATCHING SYSTEM FORMULA GUIDE Solid Coated.
 * We will try the best to match the PANTONE® colors when printing, but exact matching cannot be guaranteed, due to variation in temperature, humidity and materials.

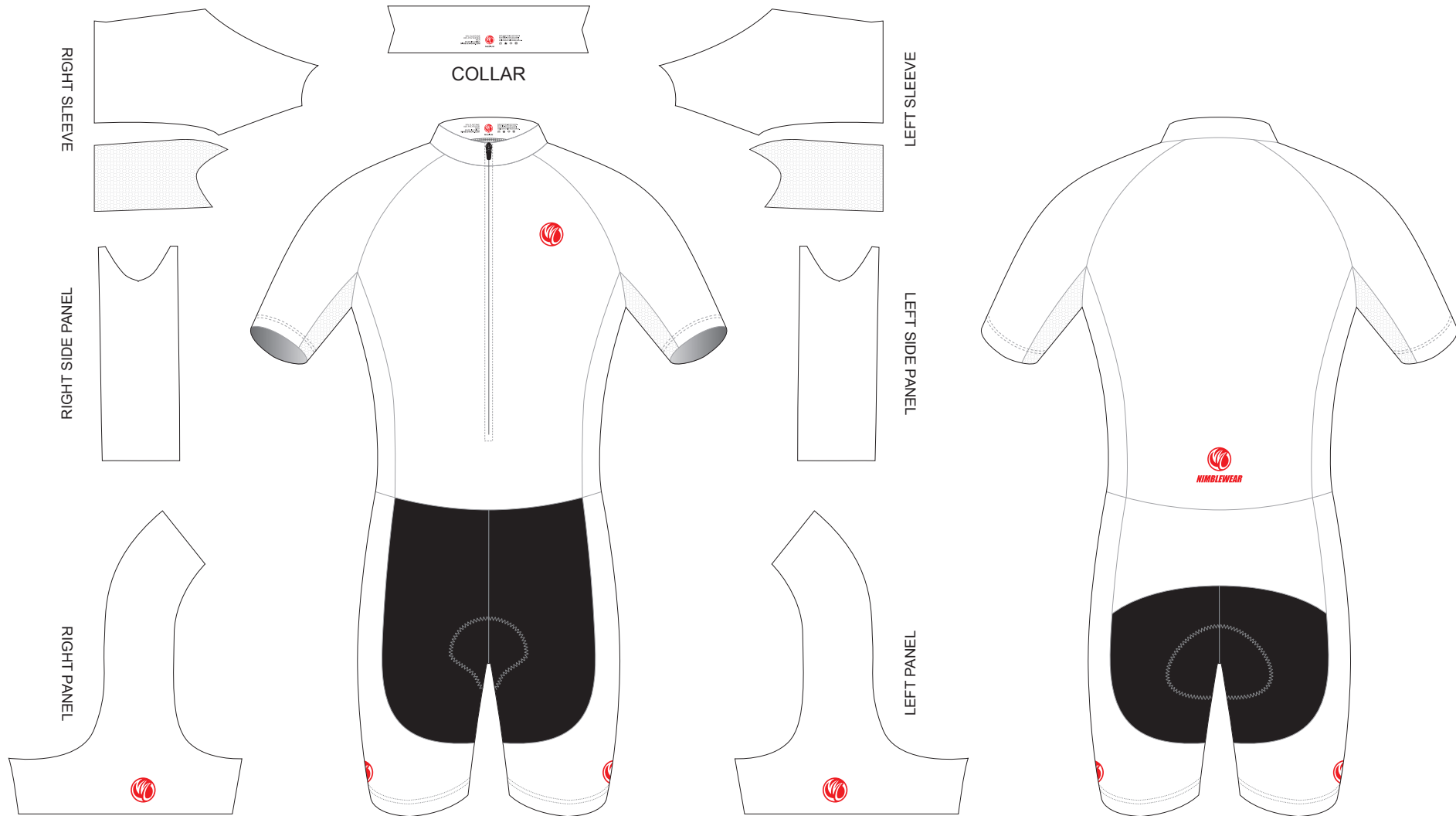
TAK09B Short Sleeve Cycling Speed Skinsuit

T Style, with Collar, with Silicon Gripper, with Mesh Underarm Panels

CUSTOMER: _____ VERSION: 1
 DESIGN REQUEST NUMBER: _____ DATE: 00 / 00 / 2014
 www.nimblewear.com sales@nimblewear.com



Please note that NIMBLEWEAR logo must appear on the upper chest area (left or right), side panels and on the center of lower back for all the suits.



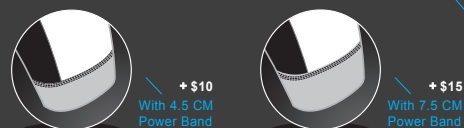
PRE-DYED LYCRA:

- PANTONE® Black C
- PANTONE® Red 186C
- PANTONE® Dark Navy 2767 C
- PANTONE® Navy Blue 2738 C
- PANTONE® Light Blue 285 C
- PANTONE® Cool Grey 11C
- PANTONE® Green 340 C

COLORS USED:



OTHER OPTIONS FOR LEG HEM:



FLATLOCK COLOR OPTIONS:



• This template can be edited with vector graphic software programs. Adobe Illustrator CS5 is recommended.
 • All logos must be provided in vector format and all fonts must be converted into outline.
 • The color on-screen may vary from the finished product. To confirm the color please refer to PANTONE® MATCHING SYSTEM FORMULA GUIDE Solid Coated.
 • We will try the best to match the PANTONE® colors when printing, but exact matching cannot be guaranteed, due to variation in temperature, humidity and materials.

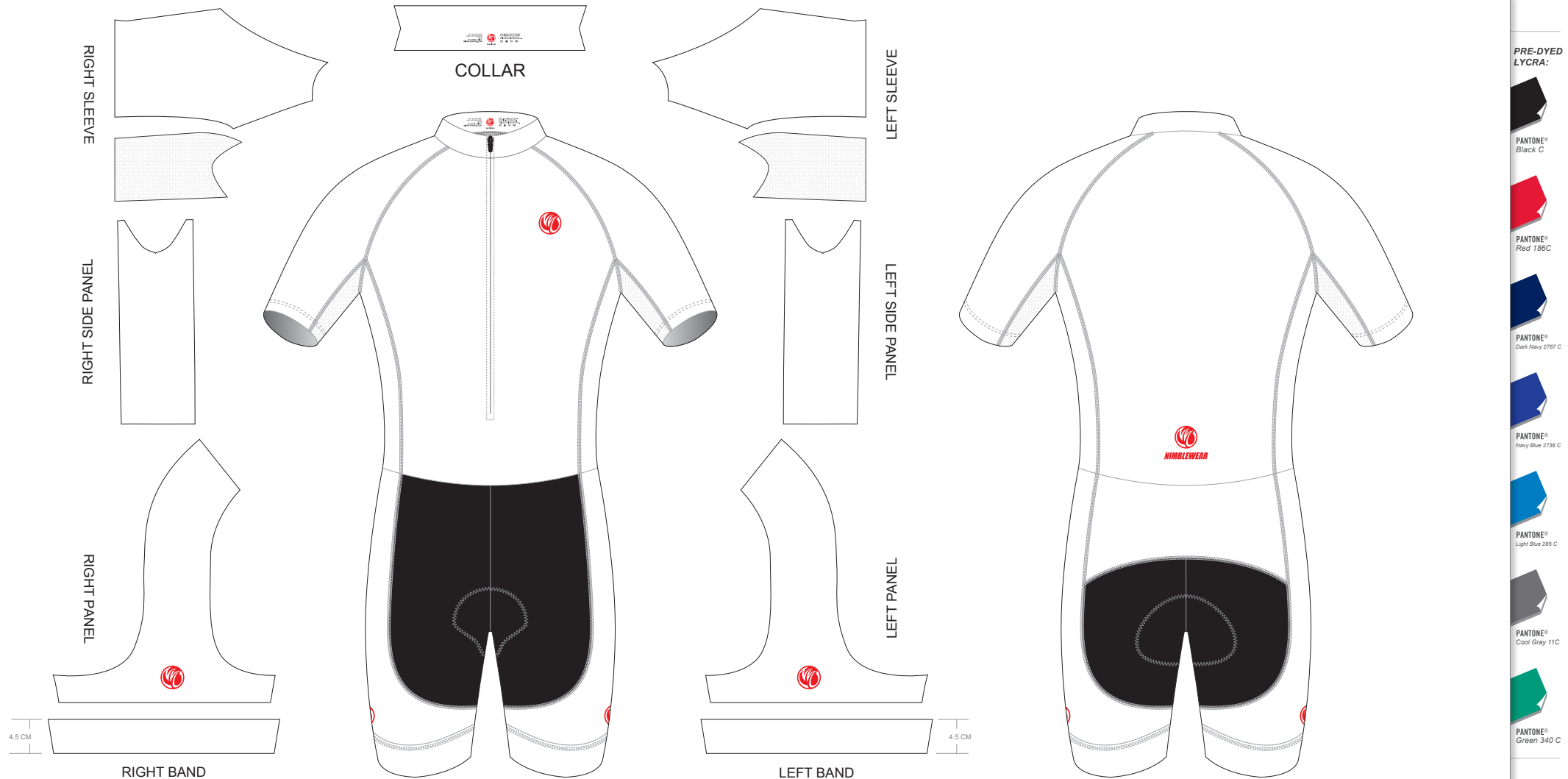
TAK10B Short Sleeve Cycling Speed Skinsuit

T Style, with Collar, with 4.5 CM Power Band, with Mesh Underarm Panels

CUSTOMER: _____ VERSION: 1
 DESIGN REQUEST NUMBER: _____ DATE: 00 / 00 / 2014
 www.nimblewear.com sales@nimblewear.com



Please note that NIMBLEWEAR logo must appear on the upper chest area (left or right), side panels and on the center of lower back for all the suits. NIMBLEWEAR standard power band for bib shorts is 4.5 CM in width. 7.5 CM power band is available upon customer's request.



PRE-DYED LYCRA:

PANTONE® Black C

PANTONE® Red 186C

PANTONE® Dark Navy 2767 C

PANTONE® Navy Blue 2738 C

PANTONE® Light Blue 285 C

PANTONE® Cool Grey 11C

PANTONE® Green 340 C

COLORS USED:



OTHER OPTIONS FOR LEG HEM:



FLATLOCK COLOR OPTIONS:



* This template can be edited with vector graphic software programs. Adobe Illustrator CS5 is recommended.
 * All logos must be provided in vector format and all fonts must be converted into outline.
 * The color on-screen may vary from the finished product. To confirm the color please refer to PANTONE® MATCHING SYSTEM FORMULA GUIDE Solid Coated.
 * We will try the best to match the PANTONE® colors when printing, but exact matching cannot be guaranteed, due to variation in temperature, humidity and materials.

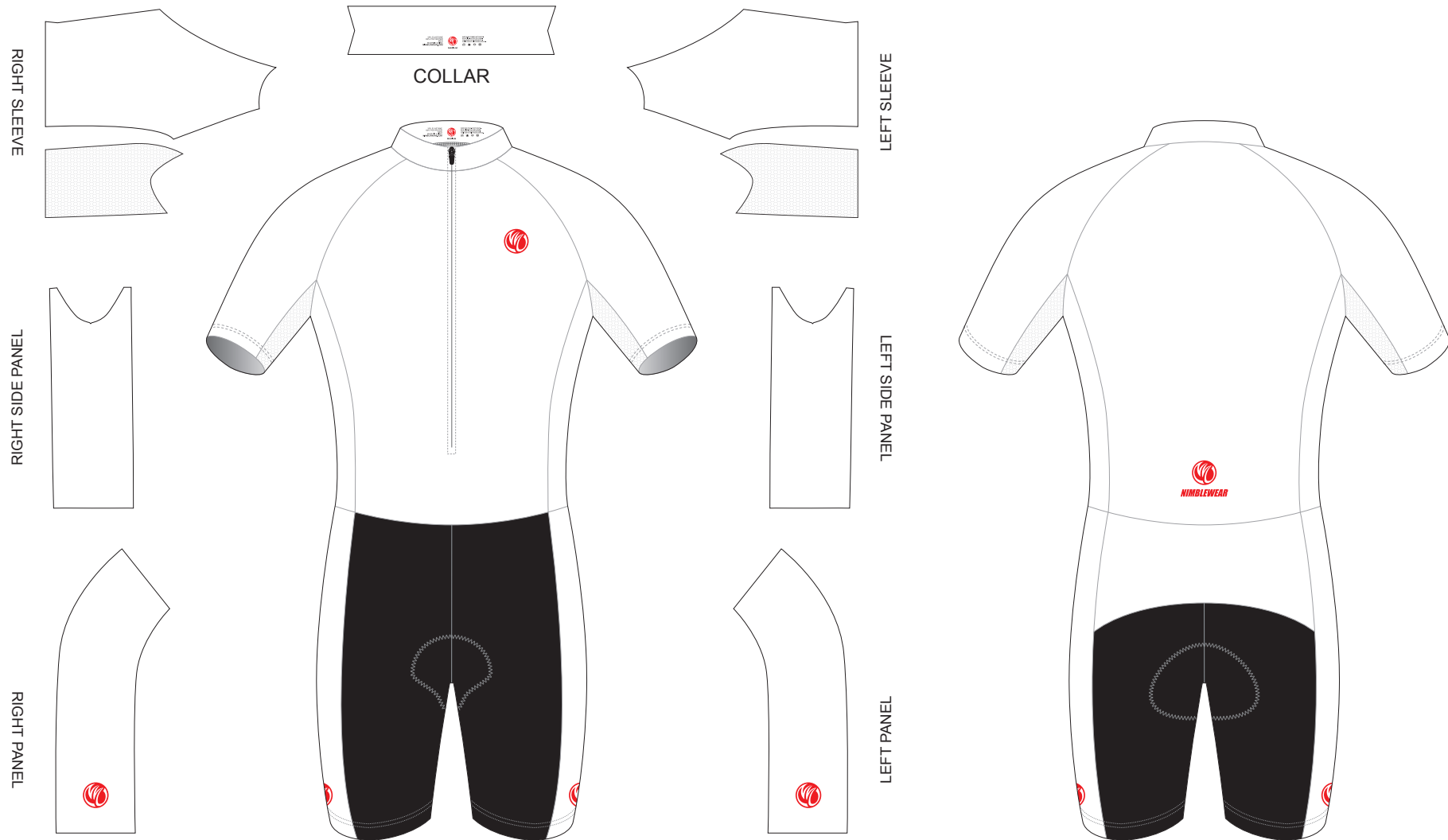
TAK11B Short Sleeve Cycling Speed Skinsuit

C Style, with Collar, with Silicon Gripper, with Mesh Underarm Panels

CUSTOMER: _____ VERSION: 1
 DESIGN REQUEST NUMBER: _____ DATE: 00 / 00 / 2014
 www.nimblewear.com sales@nimblewear.com



Please note that NIMBLEWEAR logo must appear on the upper chest area (left or right), side panels and on the center of lower back for all the suits.



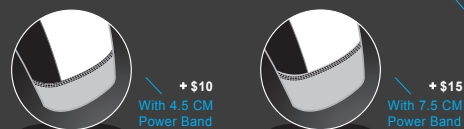
PRE-DYED LYCRA:

- PANTONE® Black C
- PANTONE® Red 186C
- PANTONE® Dark Navy 2767 C
- PANTONE® Navy Blue 2738 C
- PANTONE® Light Blue 285 C
- PANTONE® Cool Grey 11C
- PANTONE® Green 340 C

COLORS USED:



OTHER OPTIONS FOR LEG HEM:



FLATLOCK COLOR OPTIONS:



* This template can be edited with vector graphic software programs. Adobe Illustrator CS5 is recommended.
 * All logos must be provided in vector format and all fonts must be converted into outline.
 * The color on-screen may vary from the finished product. To confirm the color please refer to PANTONE® MATCHING SYSTEM FORMULA GUIDE Solid Coated.
 * We will try the best to match the PANTONE® colors when printing, but exact matching cannot be guaranteed, due to variation in temperature, humidity and materials.

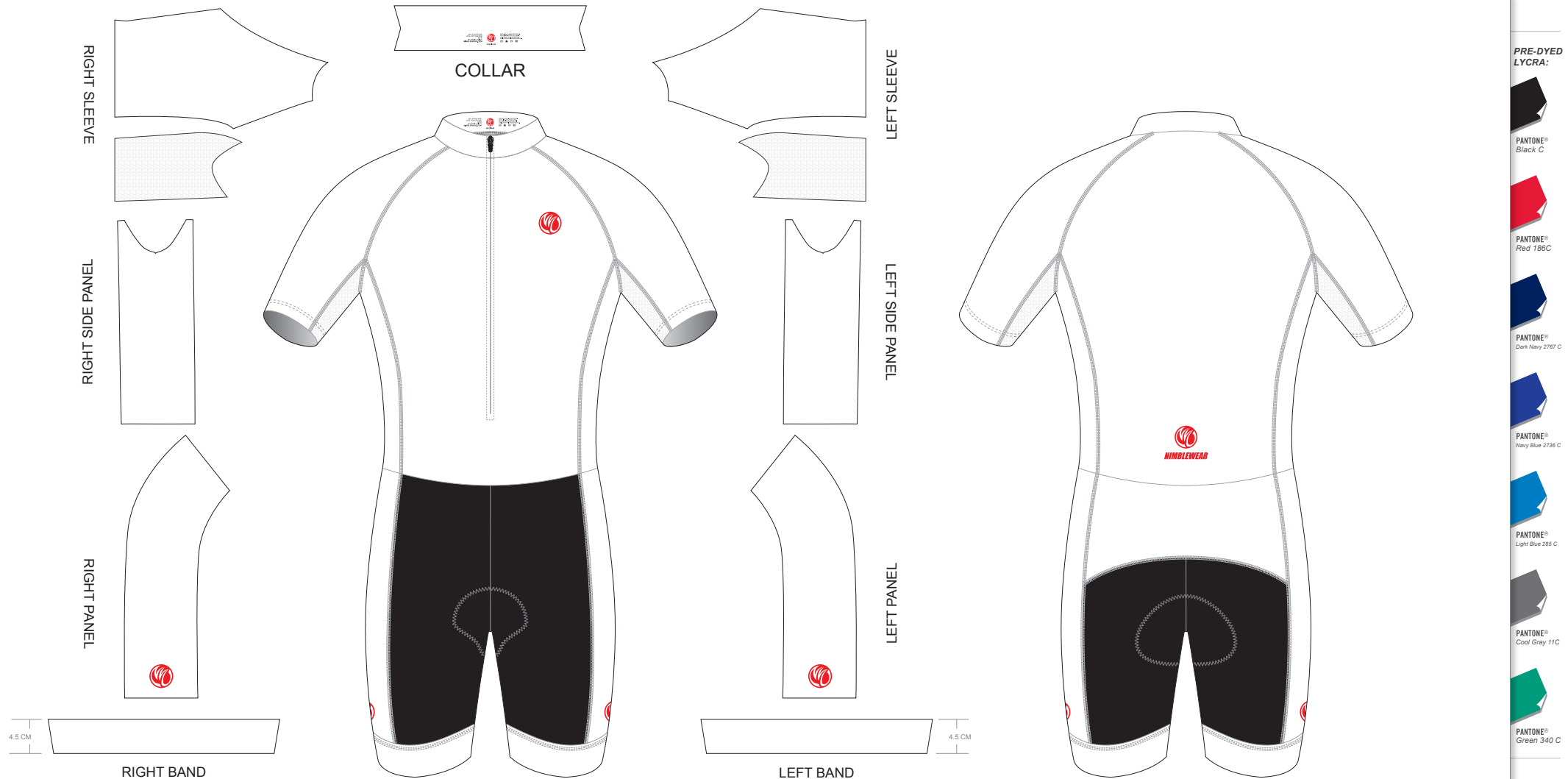
TAK12B Short Sleeve Cycling Speed Skinsuit

C Style, with Collar, with 4.5 CM Power Band, with Mesh Underarm Panels

CUSTOMER: _____ VERSION: 1
 DESIGN REQUEST NUMBER: _____ DATE: 00 / 00 / 2014
 www.nimblewear.com sales@nimblewear.com



Please note that NIMBLEWEAR logo must appear on the upper chest area (left or right), side panels and on the center of lower back for all the suits. NIMBLEWEAR standard power band for bib shorts is 4.5 CM in width. 7.5 CM power band is available upon customer's request.



COLORS USED:



OTHER OPTIONS FOR LEG HEM:



FLATLOCK COLOR OPTIONS:



* This template can be edited with vector graphic software programs. Adobe Illustrator CS5 is recommended.
 * All logos must be provided in vector format and all fonts must be converted into outline.
 * The color on-screen may vary from the finished product. To confirm the color please refer to PANTONE® MATCHING SYSTEM FORMULA GUIDE Solid Coated.
 * We will try the best to match the PANTONE® colors when printing, but exact matching cannot be guaranteed, due to variation in temperature, humidity and materials.

PRE-DYED LYCRA:



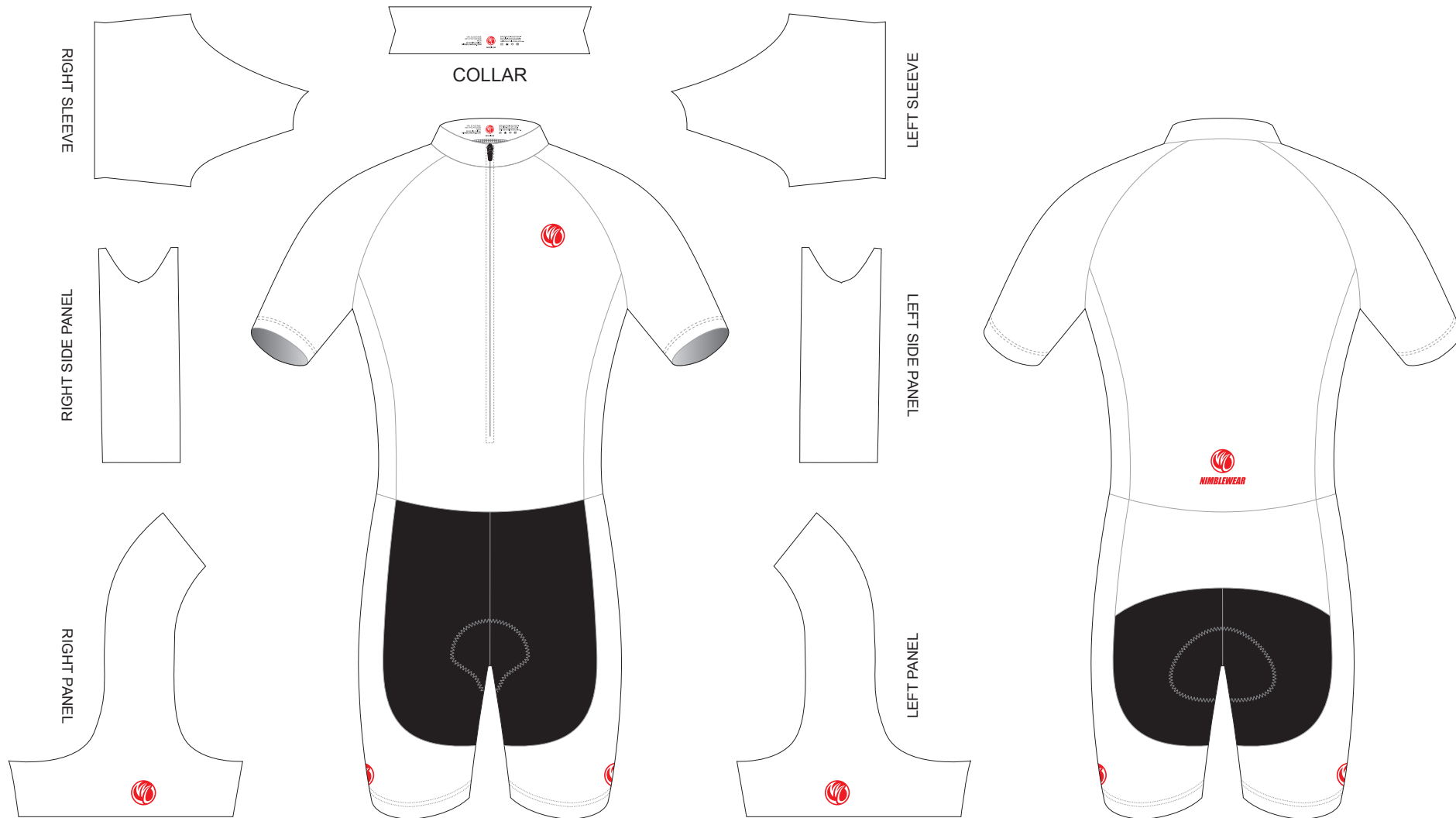
TAK13A Short Sleeve Cycling Speed Skinsuit

T Style, with Collar, with Silicon Gripper

CUSTOMER: _____ VERSION: 1
 DESIGN REQUEST NUMBER: _____ DATE: 00 / 00 / 2014
 www.nimblewear.com sales@nimblewear.com



Please note that NIMBLEWEAR logo must appear on the upper chest area (left or right), side panels and on the center of lower back for all the suits.



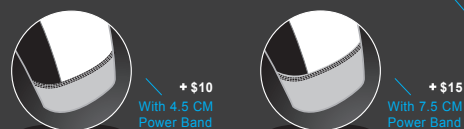
PRE-DYED LYCRA:

- PANTONE® Black C
- PANTONE® Red 186C
- PANTONE® Dark Navy 2767 C
- PANTONE® Navy Blue 2738 C
- PANTONE® Light Blue 285 C
- PANTONE® Cool Grey 11C
- PANTONE® Green 340 C

COLORS USED:



OTHER OPTIONS FOR LEG HEM:



FLATLOCK COLOR OPTIONS:



* This template can be edited with vector graphic software programs. Adobe Illustrator CS5 is recommended.
 * All logos must be provided in vector format and all fonts must be converted into outline.
 * The color on-screen may vary from the finished product. To confirm the color please refer to PANTONE® MATCHING SYSTEM FORMULA GUIDE Solid Coated.
 * We will try the best to match the PANTONE® colors when printing, but exact matching cannot be guaranteed, due to variation in temperature, humidity and materials.

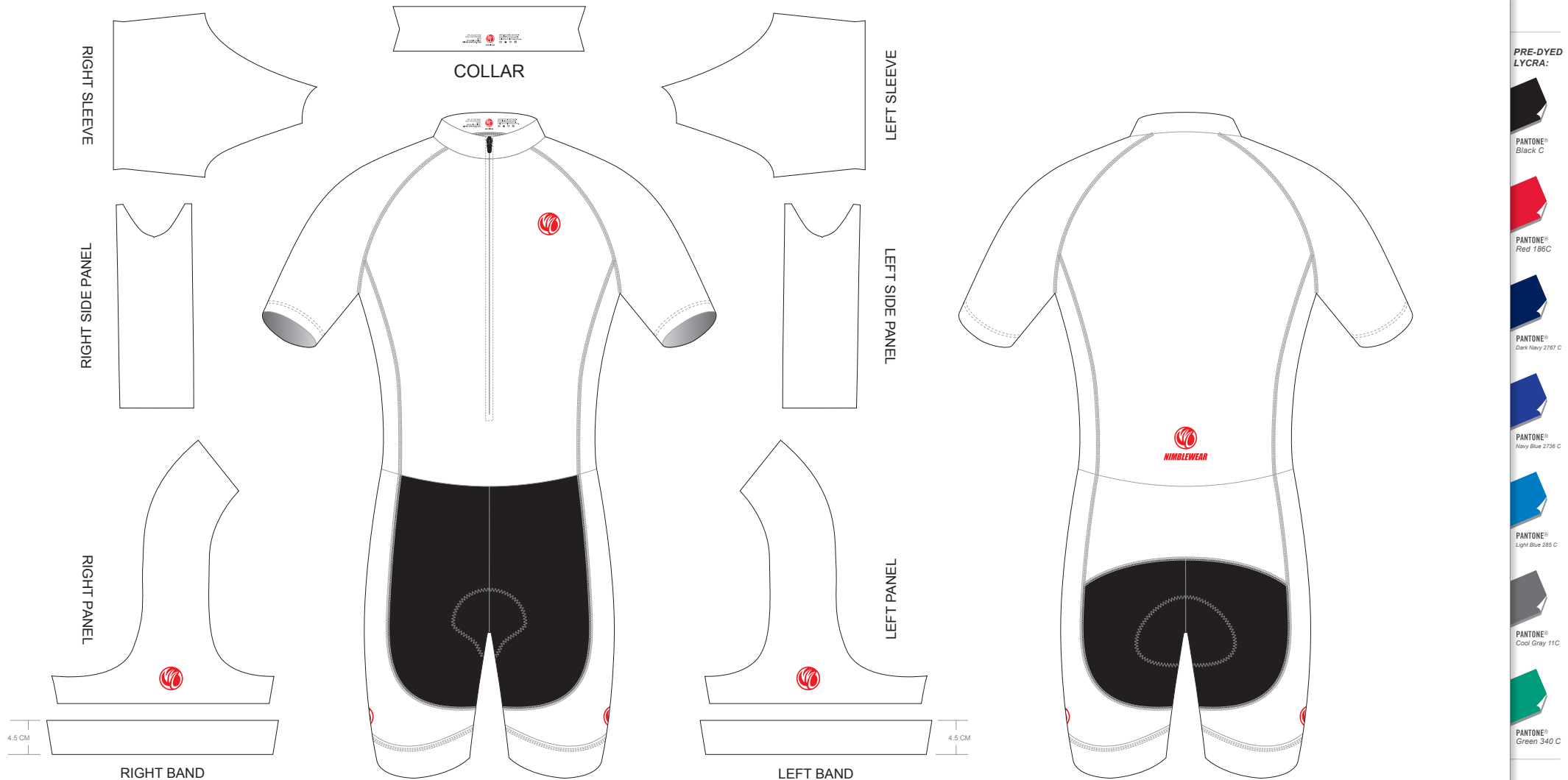
TAK14A Short Sleeve Cycling Speed Skinsuit

T Style, with Collar, with 4.5 CM Power Band

CUSTOMER: _____ VERSION: 1
 DESIGN REQUEST NUMBER: _____ DATE: 00 / 00 / 2014
 www.nimblewear.com sales@nimblewear.com



Please note that NIMBLEWEAR logo must appear on the upper chest area (left or right), side panels and on the center of lower back for all the suits. NIMBLEWEAR standard power band for bib shorts is 4.5 CM in width. 7.5 CM power band is available upon customer's request.



COLORS USED:



OTHER OPTIONS FOR LEG HEM:



FLATLOCK COLOR OPTIONS:



* This template can be edited with vector graphic software programs. Adobe Illustrator CS5 is recommended.
 * All logos must be provided in vector format and all fonts must be converted into outline.
 * The color on-screen may vary from the finished product. To confirm the color please refer to PANTONE® MATCHING SYSTEM FORMULA GUIDE Solid Coated.
 * We will try the best to match the PANTONE® colors when printing, but exact matching cannot be guaranteed, due to variation in temperature, humidity and materials.