

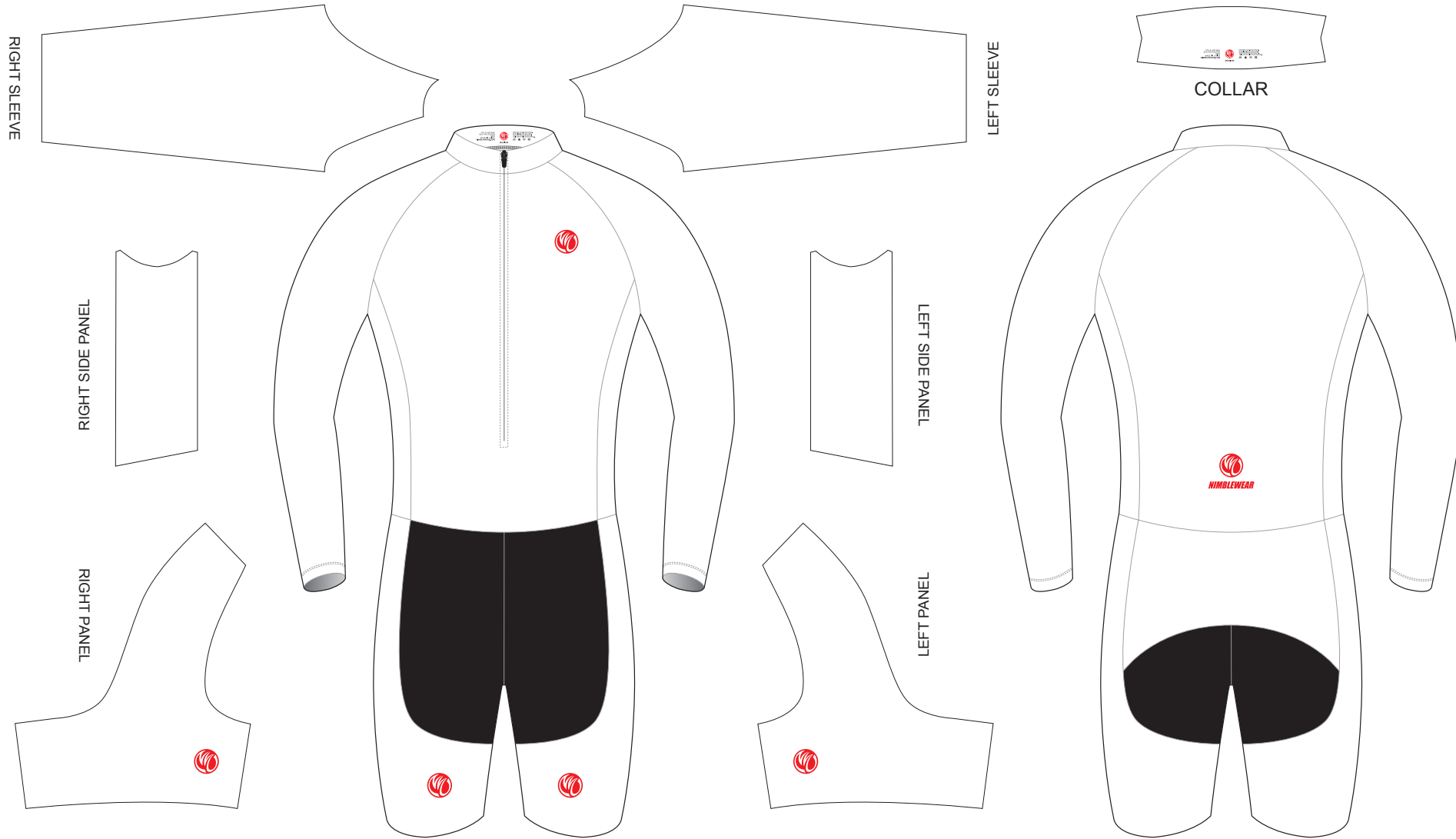
EB001 Long Sleeve Inline Skating Suit

CUSTOMER: _____ VERSION: 1
 DESIGN REQUEST NUMBER: _____ DATE: 00 / 00 / 2015
 www.nimblewear.com sales@nimblewear.com



T Style, High Collar, with Silicon Gripper

Please note that NIMBLEWEAR logo must appear on the upper chest area (left or right), front leg panels and on the center of lower back for all the suits.



PRE-DYED LYCRA:



COLORS USED:



FLATLOCK COLOR OPTIONS:



- This template can be edited with vector graphic software programs. Adobe Illustrator CS5 is recommended.
- All logos must be provided in vector format and all fonts must be converted into outline.
- The color on-screen may vary from the finished product. To confirm the color please refer to PANTONE® MATCHING SYSTEM FORMULA GUIDE Solid Coated.
- We will try the best to match the PANTONE® colors when printing, but exact matching cannot be guaranteed, due to variation in temperature, humidity and materials.

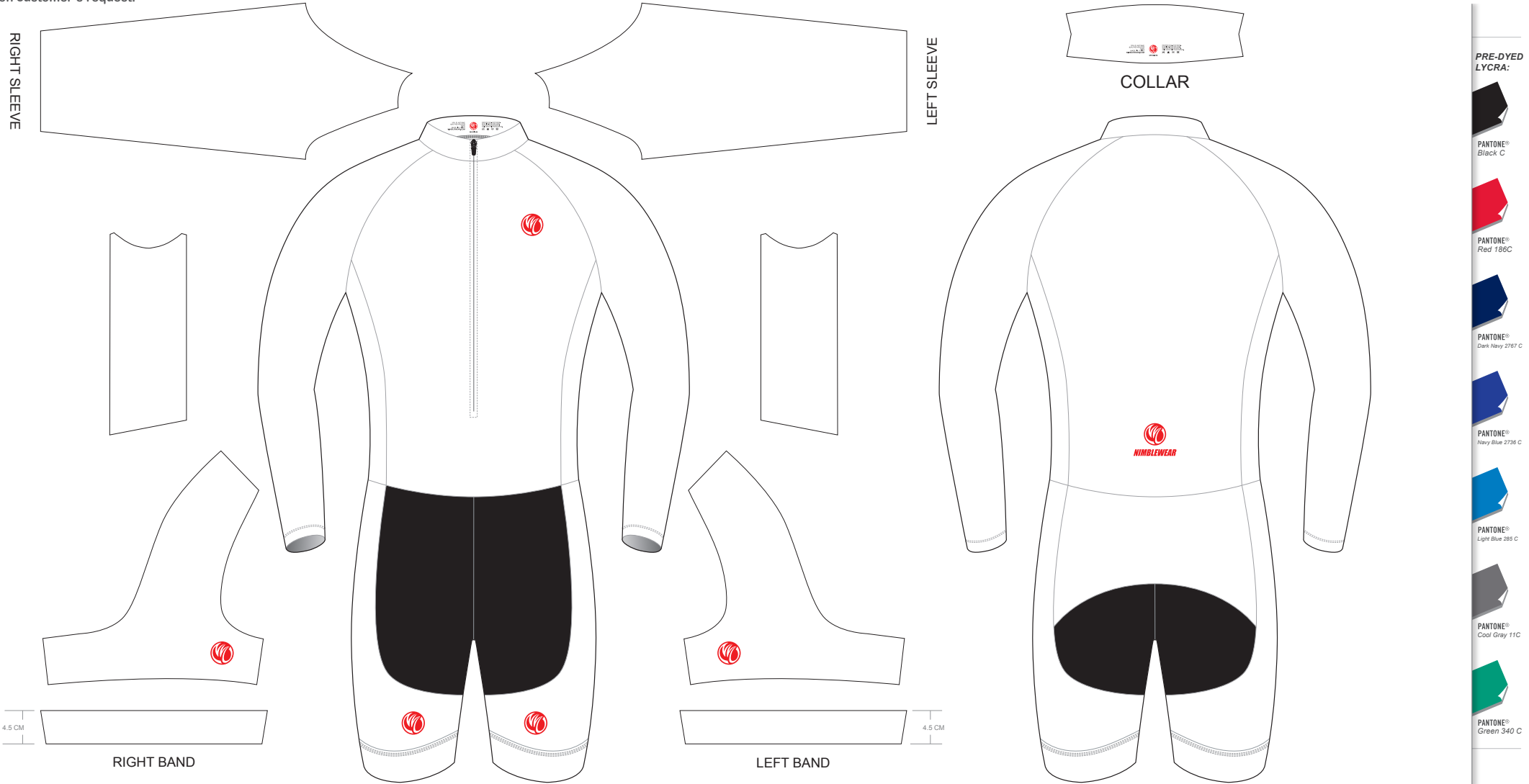
EB002 Long Sleeve Inline Skating Suit

CUSTOMER: _____ VERSION: 1
 DESIGN REQUEST NUMBER: _____ DATE: 00 / 00 / 2015
 www.nimblewear.com sales@nimblewear.com



T Style, High Collar, with 4.5 CM Power Band

Please note that NIMBLEWEAR logo must appear on the upper chest area (left or right), front leg panels and on the center of lower back for all the suits. NIMBLEWEAR standard power band for bib shorts is 4.5 CM in width. 7.5 CM power band is available upon customer's request.



COLORS USED:



FLATLOCK COLOR OPTIONS:



- This template can be edited with vector graphic software programs. Adobe Illustrator CS5 is recommended.
- All logos must be provided in vector format and all fonts must be converted into outline.
- The color on-screen may vary from the finished product. To confirm the color please refer to PANTONE® MATCHING SYSTEM FORMULA GUIDE Solid Coated.
- We will try the best to match the PANTONE® colors when printing, but exact matching cannot be guaranteed, due to variation in temperature, humidity and materials.

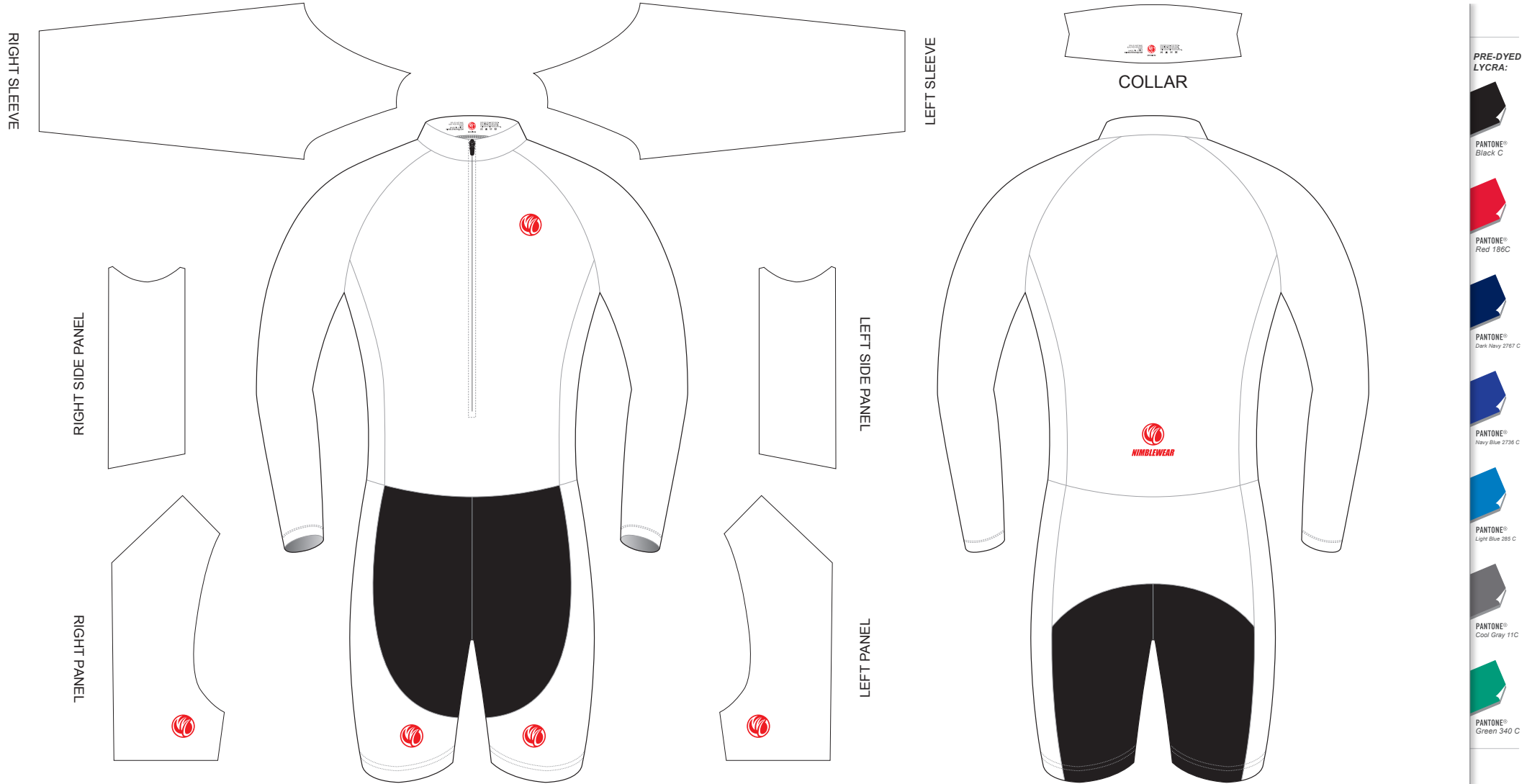
EB003 Long Sleeve Inline Skating Suit

CUSTOMER: _____ VERSION: 1
 DESIGN REQUEST NUMBER: _____ DATE: 00 / 00 / 2015
 www.nimblewear.com sales@nimblewear.com



High Collar, with Silicon Gripper

Please note that NIMBLEWEAR logo must appear on the upper chest area (left or right), front leg panels and on the center of lower back for all the suits.



COLORS USED:



FLATLOCK COLOR OPTIONS:



- This template can be edited with vector graphic software programs. Adobe Illustrator CS5 is recommended.
- All logos must be provided in vector format and all fonts must be converted into outline.
- The color on-screen may vary from the finished product. To confirm the color please refer to PANTONE® MATCHING SYSTEM FORMULA GUIDE Solid Coated.
- We will try the best to match the PANTONE® colors when printing, but exact matching cannot be guaranteed, due to variation in temperature, humidity and materials.