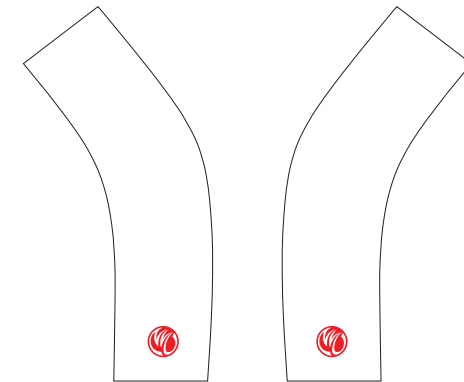
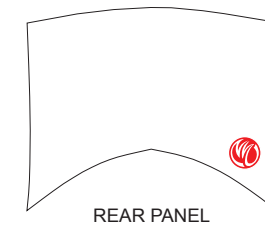


CDA01 Triathlon Shorts

C Style

www.nimblewear.com
www.nimblewear.net



PRE-DYED
LYCRA:



PANTONE®
Black C



PANTONE®
Red 186C



PANTONE®
Dark Navy 2767 C



PANTONE®
Navy Blue 2738 C



PANTONE®
Cool Gray 11C



PANTONE®
Green 340 C

COLORS USED:



CUSTOMER: _____

DESIGN REQUEST NUMBER: _____

VERSION: 1

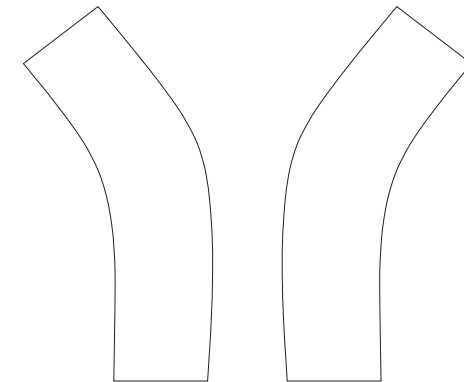
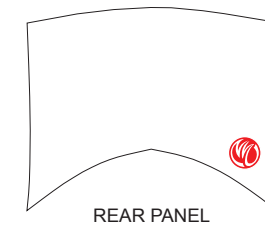
DATE: 00 / 00 / 2013

- This template can be edited with vector graphic software programs. Adobe Illustrator CS5 is recommended.
- All logos must be provided in vector format and all fonts must be converted into outline.
- The color on-screen may vary from the finished product. To confirm the color please refer to PANTONE® MATCHING SYSTEM FORMULA GUIDE Solid Coated.
- We will try the best to match the PANTONE® colors when printing, but exact matching cannot be guaranteed, due to variation in temperature, humidity and materials.

CDA02 Triathlon Shorts

C+2 Style

www.nimblewear.com
www.nimblewear.net



LEFT SIDE PANEL

RIGHT SIDE PANEL

PRE-DYED
LYCRA:



PANTONE®
Black C



PANTONE®
Red 186C



PANTONE®
Dark Navy 2767 C



PANTONE®
Navy Blue 2736 C



PANTONE®
Cool Gray 11C



PANTONE®
Green 340 C

COLORS USED:



CUSTOMER: _____

DESIGN REQUEST NUMBER: _____

VERSION: 1

DATE: 00 / 00 / 2013

- This template can be edited with vector graphic software programs. Adobe Illustrator CS5 is recommended.
- All logos must be provided in vector format and all fonts must be converted into outline.
- The color on-screen may vary from the finished product. To confirm the color please refer to PANTONE® MATCHING SYSTEM FORMULA GUIDE Solid Coated.
- We will try the best to match the PANTONE® colors when printing, but exact matching cannot be guaranteed, due to variation in temperature, humidity and materials.

CDA03 Triathlon Shorts

U Style

www.nimblewear.com
www.nimblewear.net



PRE-DYED
LYCRA:



PANTONE®
Black C



PANTONE®
Red 186C



PANTONE®
Dark Navy 2767 C



PANTONE®
Navy Blue 2738 C



PANTONE®
Cool Gray 11C



PANTONE®
Green 340 C

COLORS USED:



CUSTOMER: _____

DESIGN REQUEST NUMBER: _____

VERSION: 1

DATE: 00 / 00 / 2013

- This template can be edited with vector graphic software programs. Adobe Illustrator CS5 is recommended.
- All logos must be provided in vector format and all fonts must be converted into outline.
- The color on-screen may vary from the finished product. To confirm the color please refer to PANTONE® MATCHING SYSTEM FORMULA GUIDE Solid Coated.
- We will try the best to match the PANTONE® colors when printing, but exact matching cannot be guaranteed, due to variation in temperature, humidity and materials.

CDA04 Triathlon Shorts

U+2 Style

www.nimblewear.com
www.nimblewear.net



PRE-DYED
LYCRA:

-  PANTONE® Black C
-  PANTONE® Red 186C
-  PANTONE® Dark Navy 2767 C
-  PANTONE® Navy Blue 2738 C
-  PANTONE® Cool Gray 11C
-  PANTONE® Green 340 C

COLORS USED:



CUSTOMER: _____
DESIGN REQUEST NUMBER: _____
VERSION: 1 **DATE:** 00 / 00 / 2013

• This template can be edited with vector graphic software programs. Adobe Illustrator CS5 is recommended.
 • All logos must be provided in vector format and all fonts must be converted into outline.
 • The color on-screen may vary from the finished product. To confirm the color please refer to PANTONE® MATCHING SYSTEM FORMULA GUIDE Solid Coated.
 • We will try the best to match the PANTONE® colors when printing, but exact matching cannot be guaranteed, due to variation in temperature, humidity and materials.

CDA05 Triathlon Shorts

U Wrap Style

www.nimblewear.com
www.nimblewear.net



PRE-DYED
LYCRA:



PANTONE®
Black C



PANTONE®
Red 186C



PANTONE®
Dark Navy 2767 C



PANTONE®
Navy Blue 2736 C



PANTONE®
Cool Gray 11C



PANTONE®
Green 340 C

REAR PANEL

COLORS USED:



CUSTOMER: _____

DESIGN REQUEST NUMBER: _____

VERSION: 1

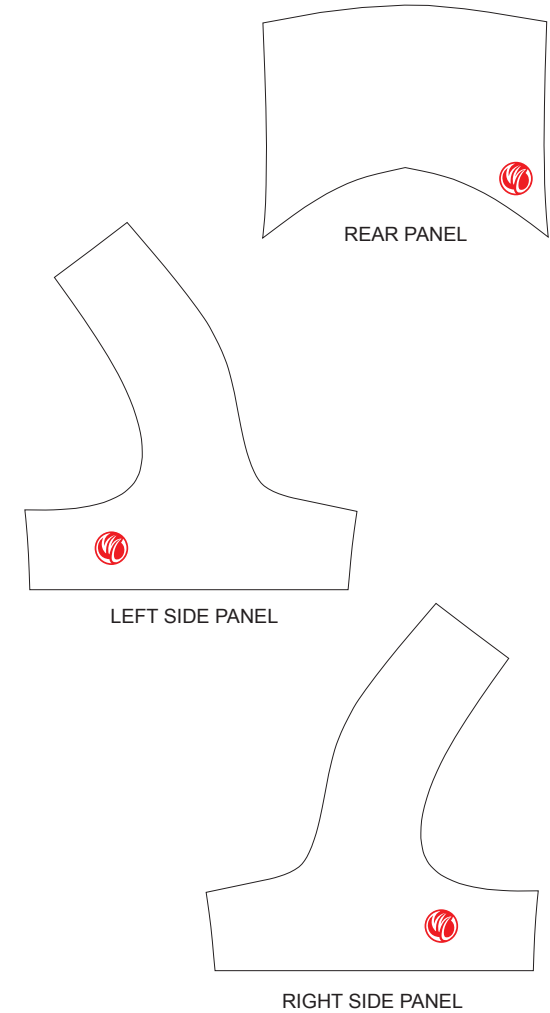
DATE: 00 / 00 / 2013

- This template can be edited with vector graphic software programs. Adobe Illustrator CS5 is recommended.
- All logos must be provided in vector format and all fonts must be converted into outline.
- The color on-screen may vary from the finished product. To confirm the color please refer to PANTONE® MATCHING SYSTEM FORMULA GUIDE Solid Coated.
- We will try the best to match the PANTONE® colors when printing, but exact matching cannot be guaranteed, due to variation in temperature, humidity and materials.

CDA06 Triathlon Shorts

T Wrap Style

www.nimblewear.com
www.nimblewear.net



PRE-DYED
LYCRA:



PANTONE®
Black C



PANTONE®
Red 186C



PANTONE®
Dark Navy 2767 C



PANTONE®
Navy Blue 2736 C



PANTONE®
Cool Gray 11C



PANTONE®
Green 340 C

COLORS USED:



CUSTOMER: _____

DESIGN REQUEST NUMBER: _____

VERSION: 1

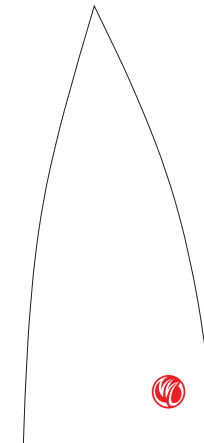
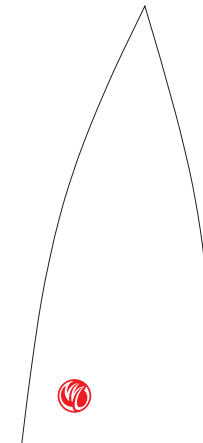
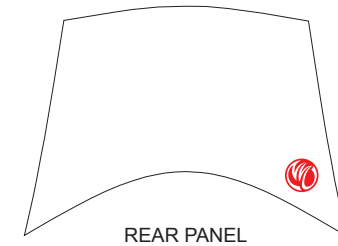
DATE: 00 / 00 / 2013

- This template can be edited with vector graphic software programs. Adobe Illustrator CS5 is recommended.
- All logos must be provided in vector format and all fonts must be converted into outline.
- The color on-screen may vary from the finished product. To confirm the color please refer to PANTONE® MATCHING SYSTEM FORMULA GUIDE Solid Coated.
- We will try the best to match the PANTONE® colors when printing, but exact matching cannot be guaranteed, due to variation in temperature, humidity and materials.

CDA07 Triathlon Shorts

V Style

www.nimblewear.com
www.nimblewear.net



PRE-DYED
LYCRA:



PANTONE®
Black C



PANTONE®
Red 186C



PANTONE®
Dark Navy 2767 C



PANTONE®
Navy Blue 2736 C



PANTONE®
Cool Gray 11C



PANTONE®
Green 340 C

COLORS USED:



CUSTOMER: _____

DESIGN REQUEST NUMBER: _____

VERSION: 1

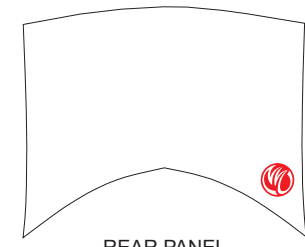
DATE: 00 / 00 / 2013

- This template can be edited with vector graphic software programs. Adobe Illustrator CS5 is recommended.
- All logos must be provided in vector format and all fonts must be converted into outline.
- The color on-screen may vary from the finished product. To confirm the color please refer to PANTONE® MATCHING SYSTEM FORMULA GUIDE Solid Coated.
- We will try the best to match the PANTONE® colors when printing, but exact matching cannot be guaranteed, due to variation in temperature, humidity and materials.

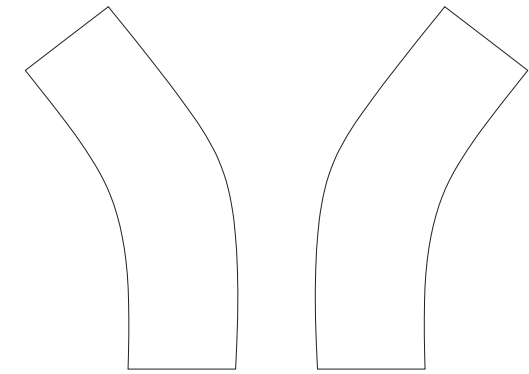
CDA08 Triathlon Shorts

Wide Band Style

www.nimblewear.com
www.nimblewear.net



REAR PANEL



LEFT SIDE PANEL

RIGHT SIDE PANEL



LEFT BAND



RIGHT BAND

PRE-DYED LYCRA:



PANTONE® Black C



PANTONE® Red 186C



PANTONE® Dark Navy 2767 C



PANTONE® Navy Blue 2736 C



PANTONE® Cool Gray 11C



PANTONE® Green 340 C

COLORS USED:



CUSTOMER: _____

DESIGN REQUEST NUMBER: _____

VERSION: 1

DATE: 00 / 00 / 2013

- This template can be edited with vector graphic software programs. Adobe Illustrator CS5 is recommended.
- All logos must be provided in vector format and all fonts must be converted into outline.
- The color on-screen may vary from the finished product. To confirm the color please refer to PANTONE® MATCHING SYSTEM FORMULA GUIDE Solid Coated.
- We will try the best to match the PANTONE® colors when printing, but exact matching cannot be guaranteed, due to variation in temperature, humidity and materials.

CDA09 Triathlon Shorts

Women, Hipster

www.nimblewear.com
www.nimblewear.net



PRE-DYED
LYCRA:



PANTONE®
Black C



PANTONE®
Red 186C



PANTONE®
Dark Navy 2767 C



PANTONE®
Navy Blue 2736 C



PANTONE®
Cool Gray 11C



PANTONE®
Green 340 C

COLORS USED:



CUSTOMER: _____

DESIGN REQUEST NUMBER: _____

VERSION: 1

DATE: 00 / 00 / 2013

- This template can be edited with vector graphic software programs. Adobe Illustrator CS5 is recommended.
- All logos must be provided in vector format and all fonts must be converted into outline.
- The color on-screen may vary from the finished product. To confirm the color please refer to PANTONE® MATCHING SYSTEM FORMULA GUIDE Solid Coated.
- We will try the best to match the PANTONE® colors when printing, but exact matching cannot be guaranteed, due to variation in temperature, humidity and materials.