

TAW01A BMX/Downhill Jersey

RAGLAN SLEEVE, without Side Panel

CUSTOMER: _____

VERSION: 1

DESIGN REQUEST NUMBER: _____

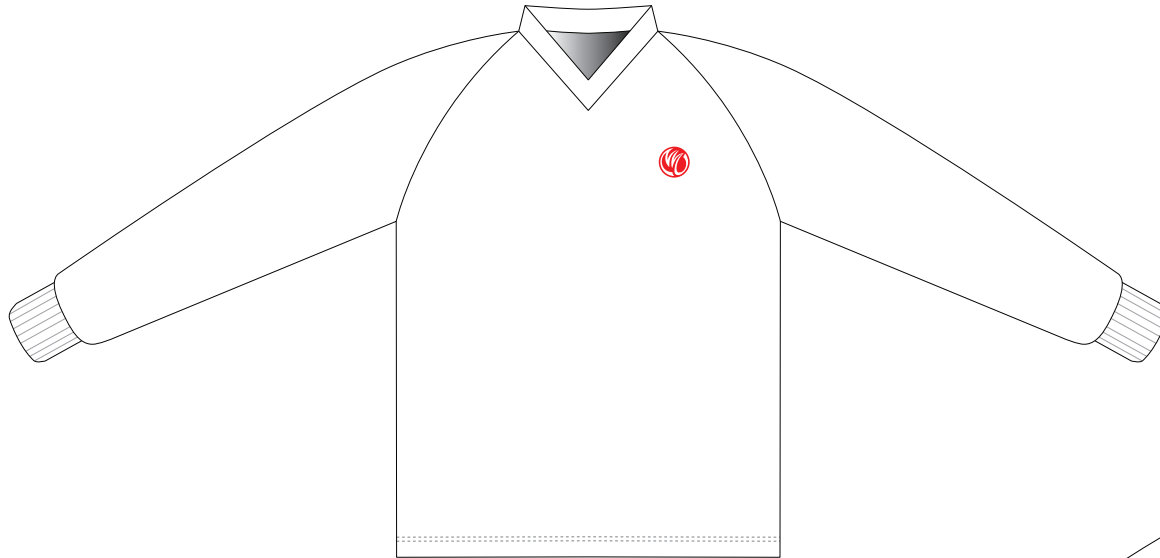
DATE: 00 / 00 / 2014

www.nimblewear.com

sales@nimblewear.com



Please note that NIMBLEWEAR logo must appear on the upper chest area (left or right) and the center of lower back.



FRONT



BACK

COLORS USED:



NECK OPTIONS:

Round Neck



V Neck



- This template can be edited with vector graphic software programs. Adobe Illustrator CS5 is recommended.
- All logos must be provided in vector format and all fonts must be converted into outline.
- The color on-screen may vary from the finished product. To confirm the color please refer to PANTONE® MATCHING SYSTEM FORMULA GUIDE Solid Coated.
- We will try the best to match the PANTONE® colors when printing, but exact matching cannot be guaranteed, due to variation in temperature, humidity and materials.

TAW02A BMX/Downhill Jersey

SET-IN SLEEVE, without Side Panel

CUSTOMER: _____

VERSION: 1

DESIGN REQUEST NUMBER: _____

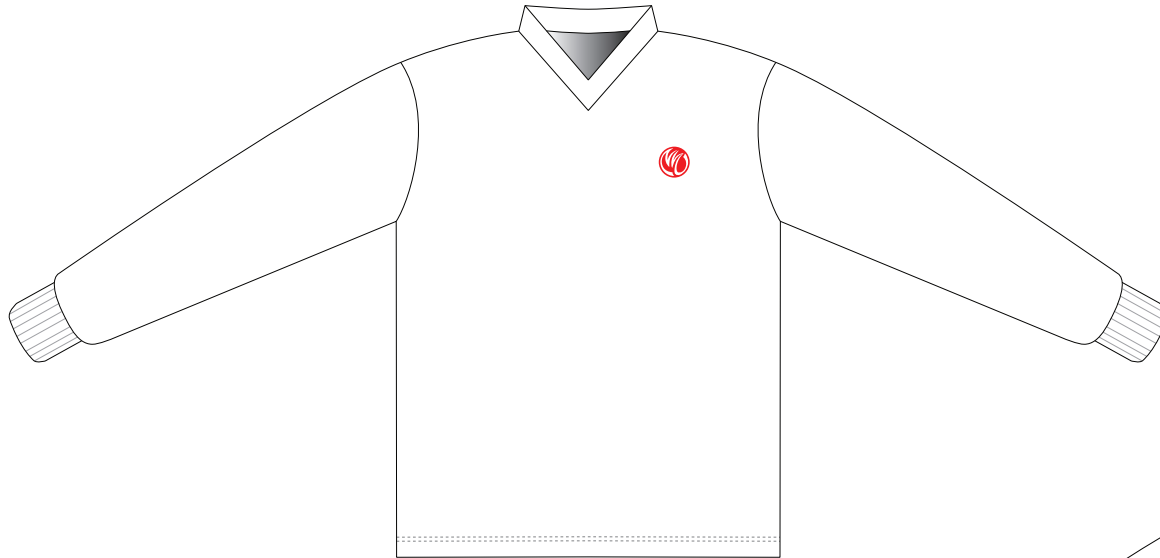
DATE: 00 / 00 / 2014

www.nimblewear.com

sales@nimblewear.com



Please note that NIMBLEWEAR logo must appear on the upper chest area (left or right) and the center of lower back.



FRONT



BACK

COLORS USED:



NECK OPTIONS:

Round Neck



V Neck



- This template can be edited with vector graphic software programs. Adobe Illustrator CS5 is recommended.
- All logos must be provided in vector format and all fonts must be converted into outline.
- The color on-screen may vary from the finished product. To confirm the color please refer to PANTONE® MATCHING SYSTEM FORMULA GUIDE Solid Coated.
- We will try the best to match the PANTONE® colors when printing, but exact matching cannot be guaranteed, due to variation in temperature, humidity and materials.

TAW03A BMX/Downhill Jersey

RAGLAN SLEEVE, with Side Panel

CUSTOMER: _____

VERSION: 1

DESIGN REQUEST NUMBER: _____

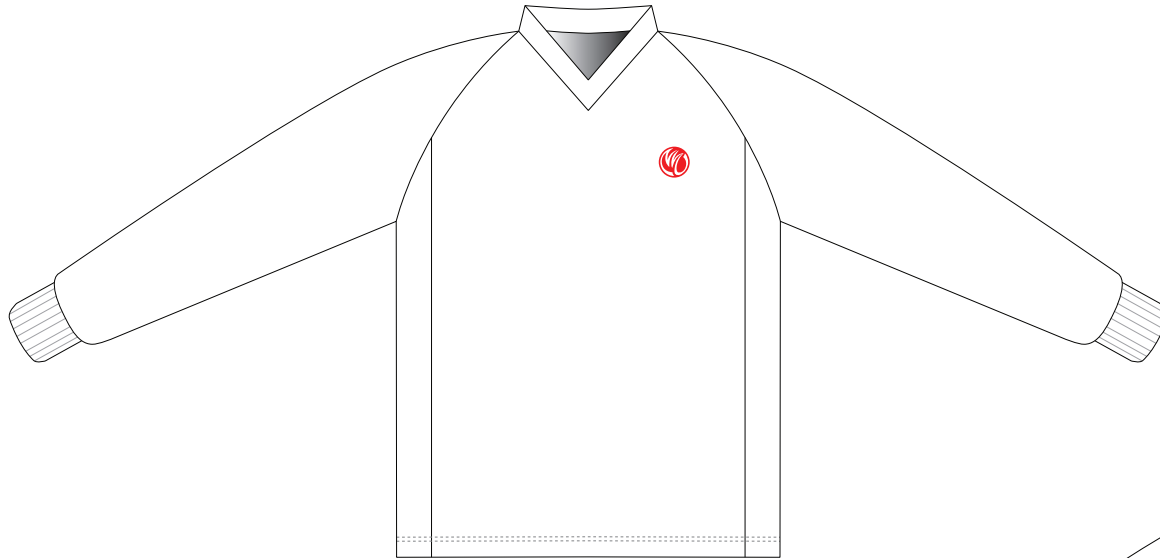
DATE: 00 / 00 / 2014

www.nimblewear.com

sales@nimblewear.com



Please note that NIMBLEWEAR logo must appear on the upper chest area (left or right) and the center of lower back.



FRONT



BACK

COLORS USED:



- This template can be edited with vector graphic software programs. Adobe Illustrator CS5 is recommended.
- All logos must be provided in vector format and all fonts must be converted into outline.
- The color on-screen may vary from the finished product. To confirm the color please refer to PANTONE® MATCHING SYSTEM FORMULA GUIDE Solid Coated.
- We will try the best to match the PANTONE® colors when printing, but exact matching cannot be guaranteed, due to variation in temperature, humidity and materials.

TAW04B BMX/Downhill Jersey

RAGLAN SLEEVE, without Side Panel, with Mesh Underarm Panels

CUSTOMER: _____

VERSION: 1

DESIGN REQUEST NUMBER: _____

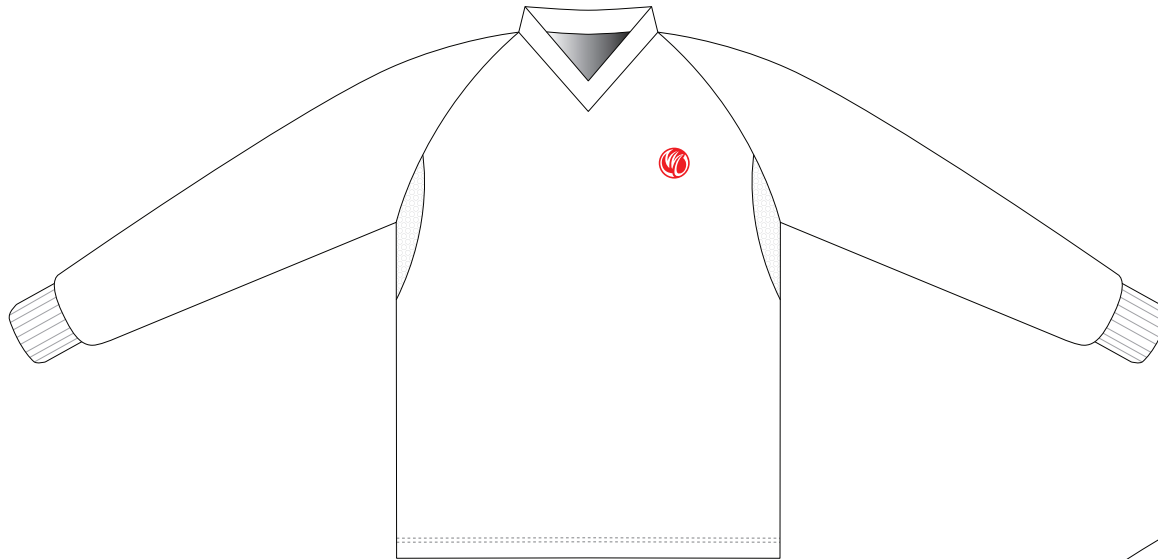
DATE: 00 / 00 / 2014

www.nimblewear.com

sales@nimblewear.com



Please note that NIMBLEWEAR logo must appear on the upper chest area (left or right) and the center of lower back.



FRONT



BACK

COLORS USED:



- This template can be edited with vector graphic software programs. Adobe Illustrator CS5 is recommended.
- All logos must be provided in vector format and all fonts must be converted into outline.
- The color on-screen may vary from the finished product. To confirm the color please refer to PANTONE® MATCHING SYSTEM FORMULA GUIDE Solid Coated.
- We will try the best to match the PANTONE® colors when printing, but exact matching cannot be guaranteed, due to variation in temperature, humidity and materials.

TAW05B BMX/Downhill Jersey

SET-IN SLEEVE, without Side Panel, with Mesh Underarm Panels

CUSTOMER: _____

VERSION: 1

DESIGN REQUEST NUMBER: _____

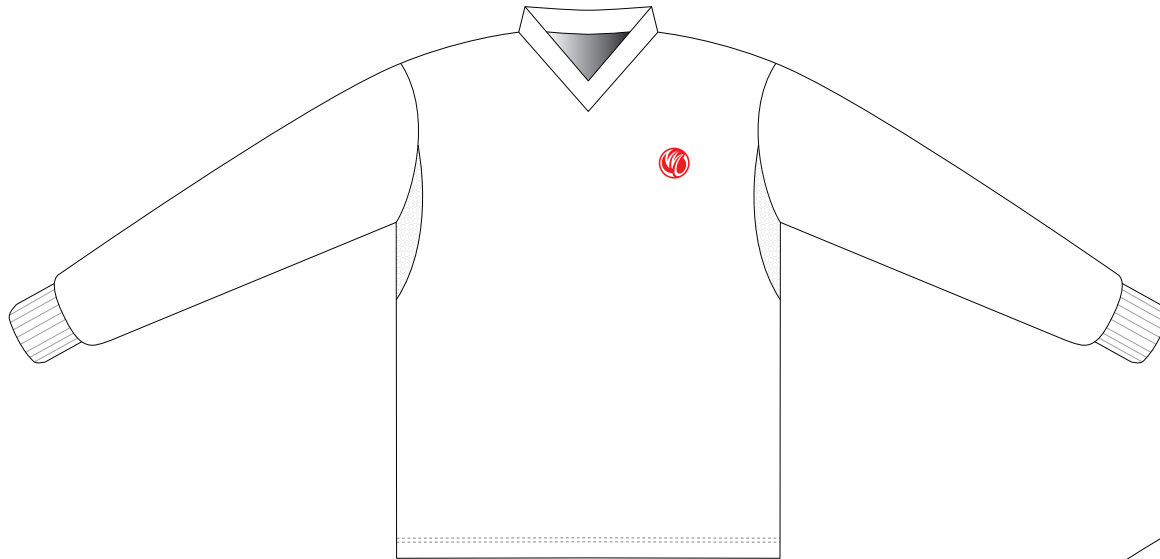
DATE: 00 / 00 / 2014

www.nimblewear.com

sales@nimblewear.com



Please note that NIMBLEWEAR logo must appear on the upper chest area (left or right) and the center of lower back.



FRONT



BACK

COLORS USED:



- This template can be edited with vector graphic software programs. Adobe Illustrator CS5 is recommended.
- All logos must be provided in vector format and all fonts must be converted into outline.
- The color on-screen may vary from the finished product. To confirm the color please refer to PANTONE® MATCHING SYSTEM FORMULA GUIDE Solid Coated.
- We will try the best to match the PANTONE® colors when printing, but exact matching cannot be guaranteed, due to variation in temperature, humidity and materials.