

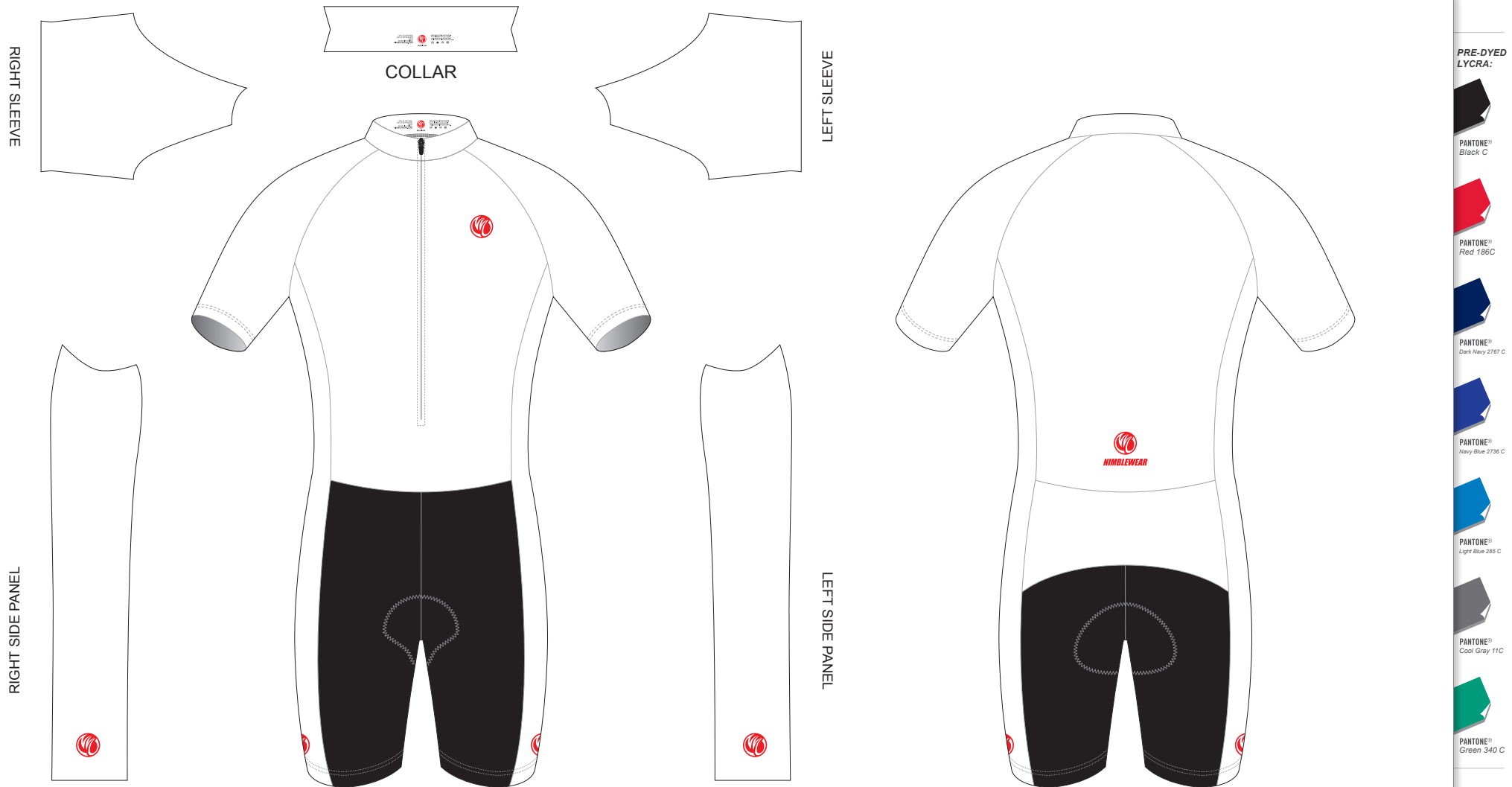
AK001 Short Sleeve Cycling Speed Skinsuit

CUSTOMER: _____ VERSION: 1
 DESIGN REQUEST NUMBER: _____ DATE: 00/00/2015
 www.nimblewear.com sales@nimblewear.com



C Style, with Collar, with Silicon Gripper

Please note that NIMBLEWEAR logo must appear on the upper chest area (left or right), side panels and on the center of lower back for all the suits.



COLORS USED:



FLATLOCK COLOR OPTIONS:



- This template can be edited with vector graphic software programs. Adobe Illustrator CS5 is recommended.
- All logos must be provided in vector format and all fonts must be converted into outline.
- The color on-screen may vary from the finished product. To confirm the color please refer to PANTONE® MATCHING SYSTEM FORMULA GUIDE Solid Coated.
- We will try the best to match the PANTONE® colors when printing, but exact matching cannot be guaranteed, due to variation in temperature, humidity and materials.

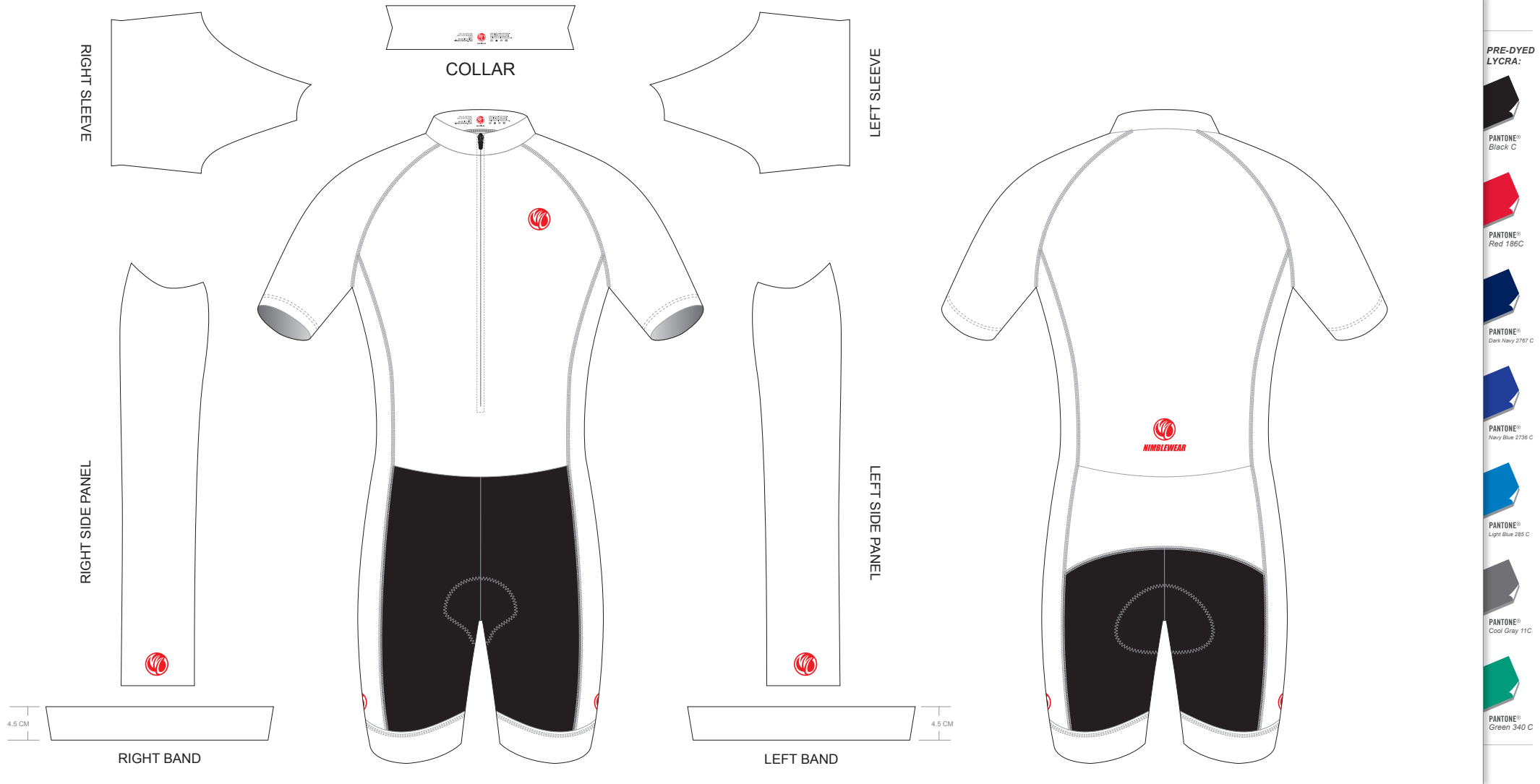
AK002 Short Sleeve Cycling Speed Skinsuit

CUSTOMER: _____ VERSION: 1
 DESIGN REQUEST NUMBER: _____ DATE: 00/00/2015
 www.nimblewear.com sales@nimblewear.com



C Style, with Collar, with 4.5 CM Power Band

Please note that NIMBLEWEAR logo must appear on the upper chest area (left or right), side panels and on the center of lower back for all the suits. NIMBLEWEAR standard power band for bib shorts is 4.5 CM in width. 7.5 CM power band is available upon customer's request.



PRE-DYED LYCRA:



COLORS USED:



FLATLOCK COLOR OPTIONS:



- This template can be edited with vector graphic software programs. Adobe Illustrator CS5 is recommended.
- All logos must be provided in vector format and all fonts must be converted into outline.
- The color on-screen may vary from the finished product. To confirm the color please refer to PANTONE® MATCHING SYSTEM FORMULA GUIDE Solid Coated.
- We will try the best to match the PANTONE® colors when printing, but exact matching cannot be guaranteed, due to variation in temperature, humidity and materials.

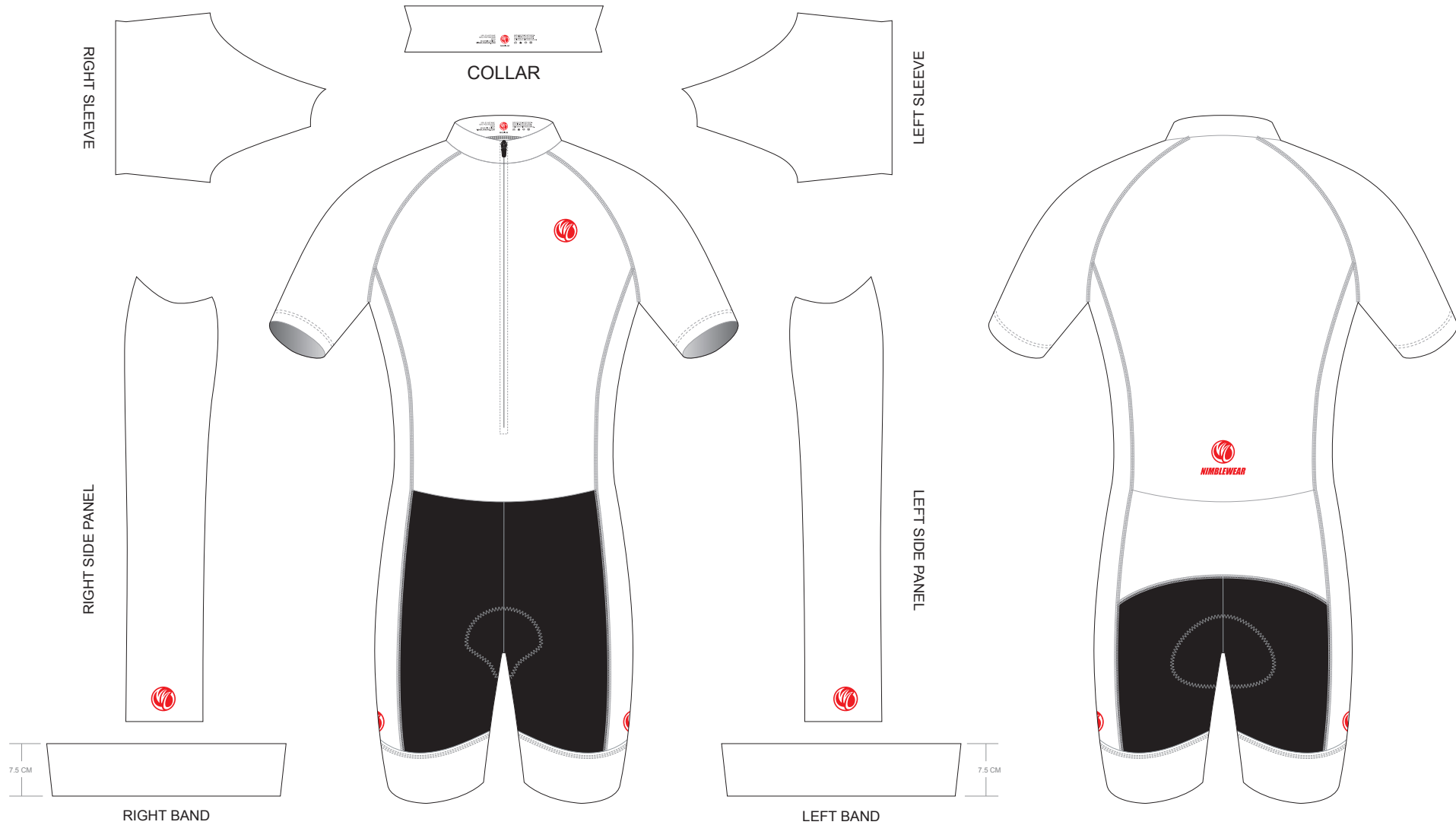
AK003 Short Sleeve Cycling Speed Skinsuit

CUSTOMER: _____ VERSION: 1
 DESIGN REQUEST NUMBER: _____ DATE: 00/00/2015
 www.nimblewear.com sales@nimblewear.com



C Style, with Collar, with 7.5 CM Power Band

Please note that NIMBLEWEAR logo must appear on the upper chest area (left or right), side panels and on the center of lower back for all the suits. NIMBLEWEAR standard power band for bib shorts is 4.5 CM in width. 7.5 CM power band is available upon customer's request.



PRE-DYED LYCRA:



COLORS USED:



FLATLOCK COLOR OPTIONS:



- This template can be edited with vector graphic software programs. Adobe Illustrator CS5 is recommended.
- All logos must be provided in vector format and all fonts must be converted into outline.
- The color on-screen may vary from the finished product. To confirm the color please refer to PANTONE® MATCHING SYSTEM FORMULA GUIDE Solid Coated.
- We will try the best to match the PANTONE® colors when printing, but exact matching cannot be guaranteed, due to variation in temperature, humidity and materials.

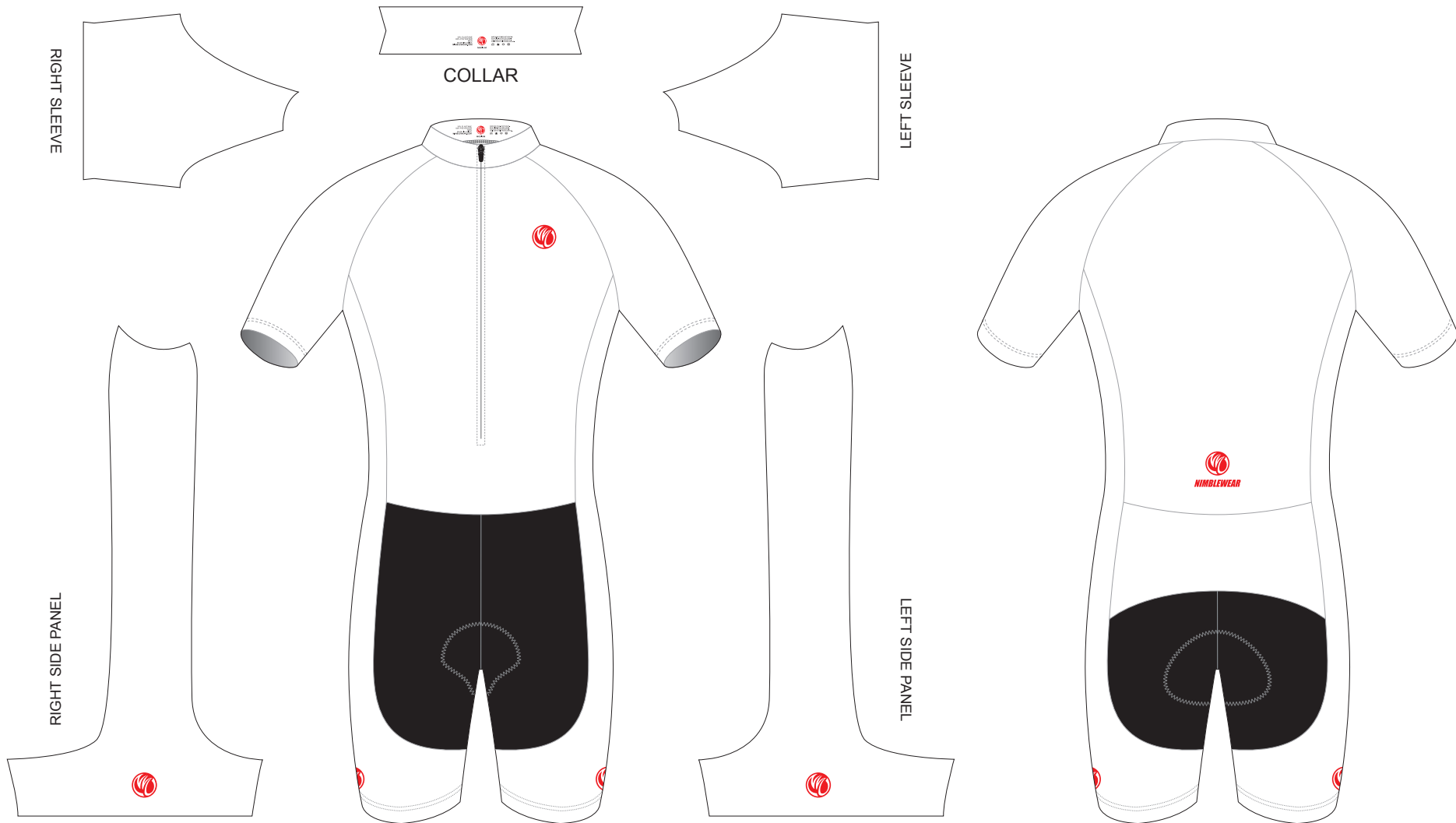
AK004 Short Sleeve Cycling Speed Skinsuit

CUSTOMER: _____ VERSION: 1
 DESIGN REQUEST NUMBER: _____ DATE: 00 / 00 / 2015
 www.nimblewear.com sales@nimblewear.com



T Style, with Collar, with Silicon Gripper

Please note that NIMBLEWEAR logo must appear on the upper chest area (left or right), side panels and on the center of lower back for all the suits.



PRE-DYED LYCRA:



COLORS USED:



FLATLOCK COLOR OPTIONS:



- This template can be edited with vector graphic software programs. Adobe Illustrator CS5 is recommended.
- All logos must be provided in vector format and all fonts must be converted into outline.
- The color on-screen may vary from the finished product. To confirm the color please refer to PANTONE® MATCHING SYSTEM FORMULA GUIDE Solid Coated.
- We will try the best to match the PANTONE® colors when printing, but exact matching cannot be guaranteed, due to variation in temperature, humidity and materials.

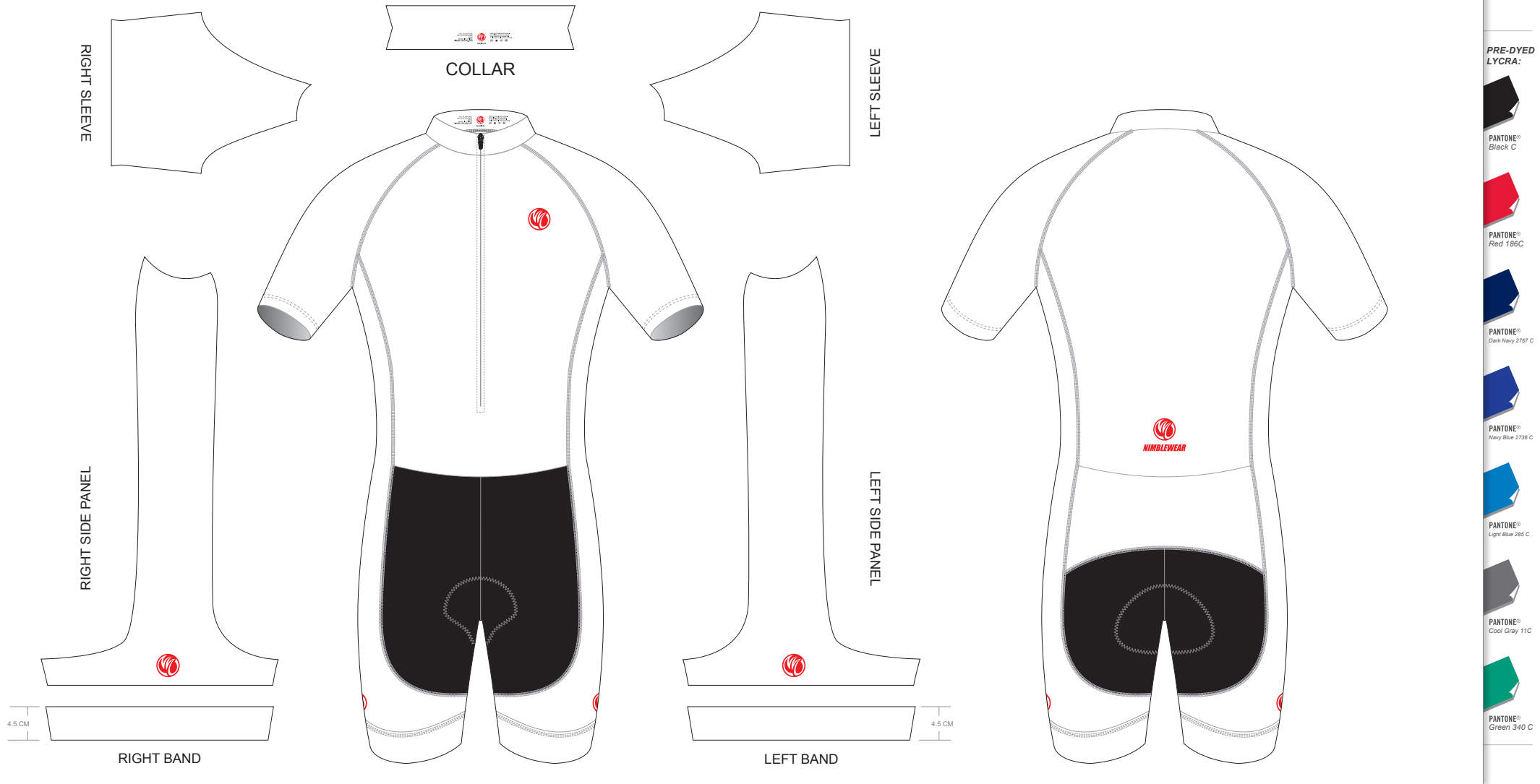
AK005 Short Sleeve Cycling Speed Skinsuit

CUSTOMER: _____ VERSION: 1
 DESIGN REQUEST NUMBER: _____ DATE: 00/00/2015
 www.nimblewear.com sales@nimblewear.com



T Style, with Collar, with 4.5 CM Power Band

Please note that NIMBLEWEAR logo must appear on the upper chest area (left or right), side panels and on the center of lower back for all the suits. NIMBLEWEAR standard power band for bib shorts is 4.5 CM in width. 7.5 CM power band is available upon customer's request.



COLORS USED:



FLATLOCK COLOR OPTIONS:



- This template can be edited with vector graphic software programs. Adobe Illustrator CS5 is recommended.
- All logos must be provided in vector format and all fonts must be converted into outline.
- The color on-screen may vary from the finished product. To confirm the color please refer to PANTONE® MATCHING SYSTEM FORMULA GUIDE Solid Coated.
- We will try the best to match the PANTONE® colors when printing, but exact matching cannot be guaranteed, due to variation in temperature, humidity and materials.

PRE-DYED LYCRA:



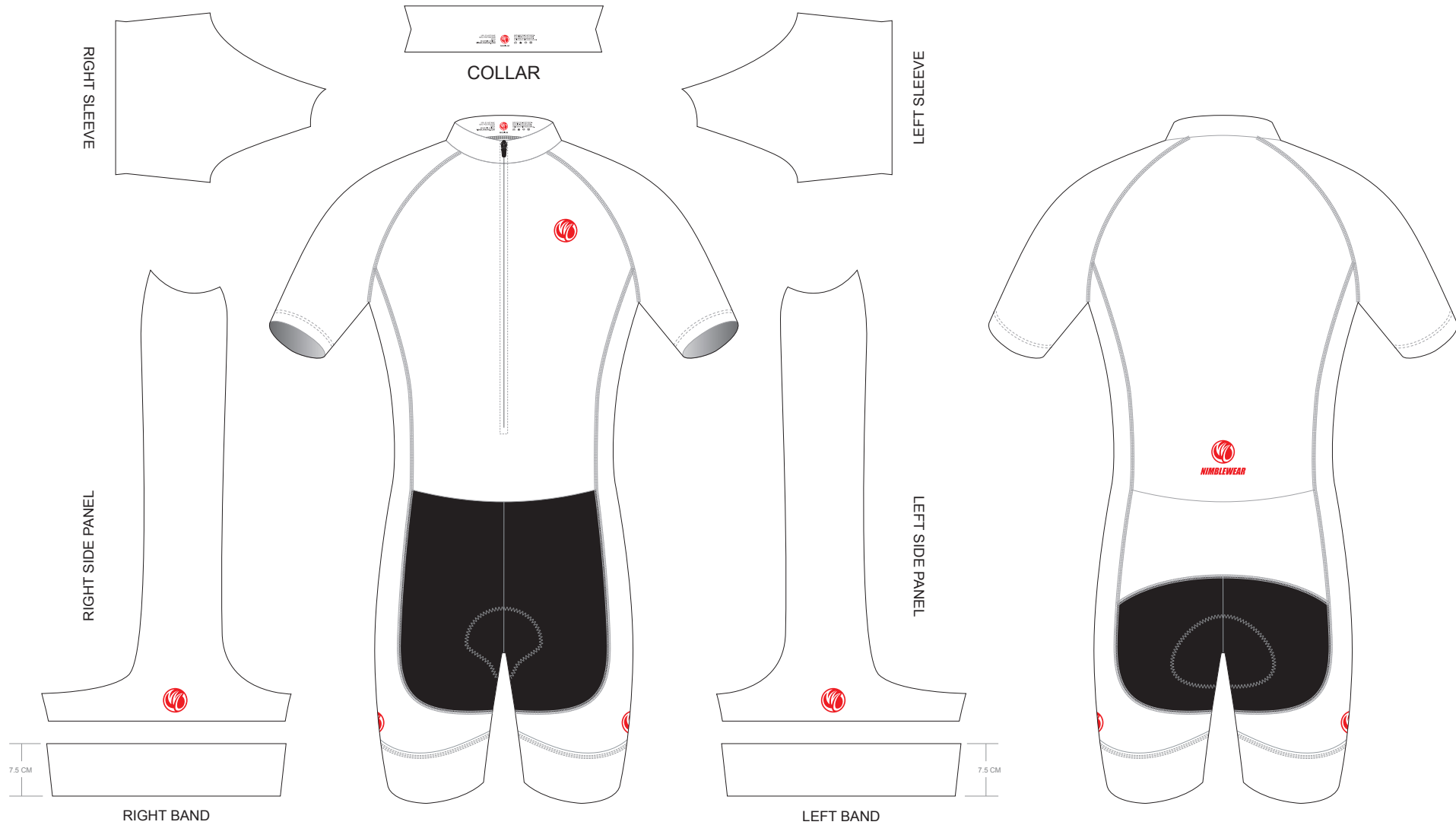
AK006 Short Sleeve Cycling Speed Skinsuit

CUSTOMER: _____ VERSION: 1
 DESIGN REQUEST NUMBER: _____ DATE: 00/00/2015
 www.nimblewear.com sales@nimblewear.com



T Style, with Collar, with 7.5 CM Power Band

Please note that NIMBLEWEAR logo must appear on the upper chest area (left or right), side panels and on the center of lower back for all the suits. NIMBLEWEAR standard power band for bib shorts is 4.5 CM in width. 7.5 CM power band is available upon customer's request.



PRE-DYED LYCRA:



COLORS USED:



FLATLOCK COLOR OPTIONS:



- This template can be edited with vector graphic software programs. Adobe Illustrator CS5 is recommended.
- All logos must be provided in vector format and all fonts must be converted into outline.
- The color on-screen may vary from the finished product. To confirm the color please refer to PANTONE® MATCHING SYSTEM FORMULA GUIDE Solid Coated.
- We will try the best to match the PANTONE® colors when printing, but exact matching cannot be guaranteed, due to variation in temperature, humidity and materials.

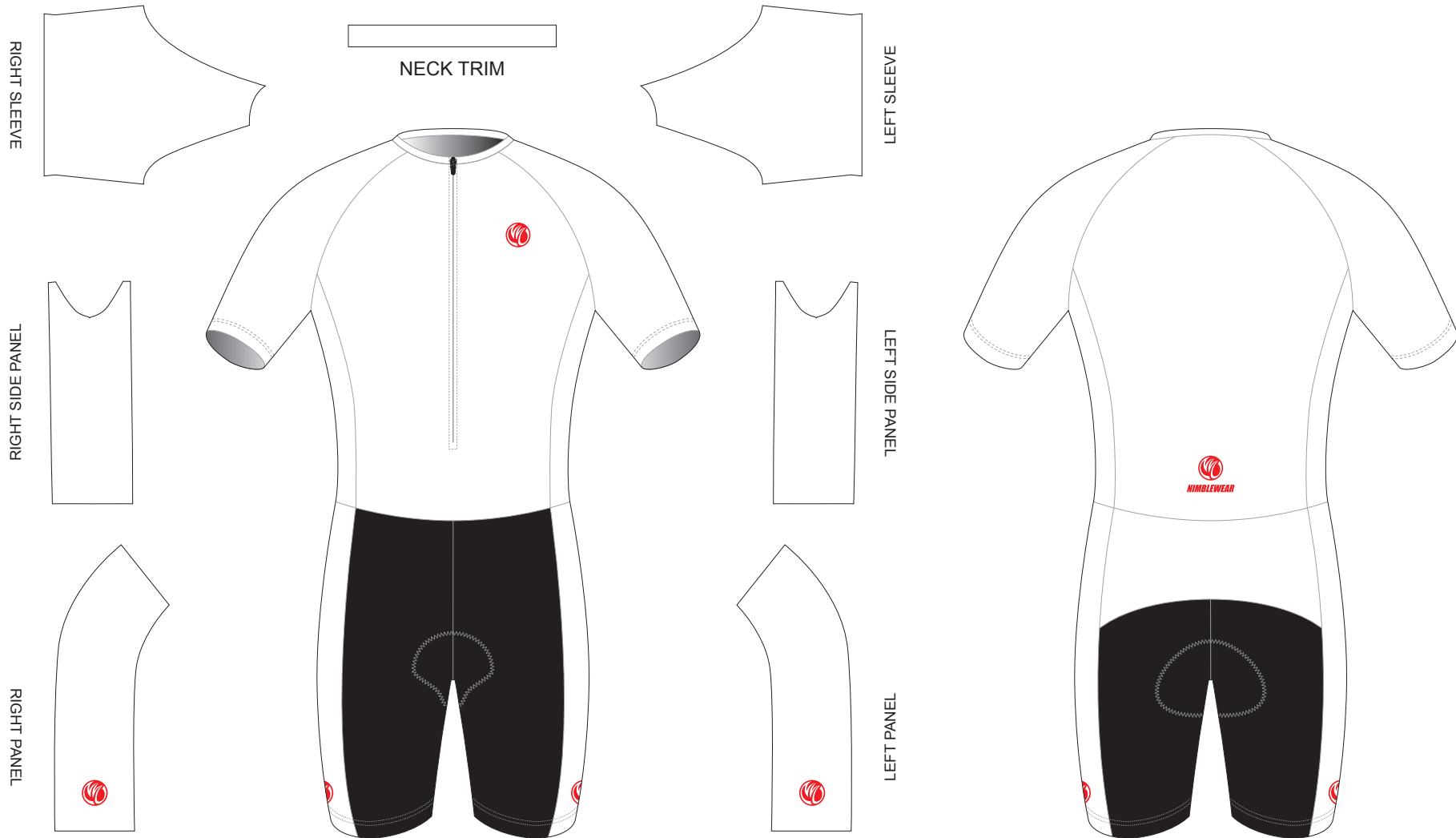
AK007 Short Sleeve Cycling Speed Skinsuit

CUSTOMER: _____ VERSION: 1
 DESIGN REQUEST NUMBER: _____ DATE: 00/00/2015
 www.nimblewear.com sales@nimblewear.com



C Style, without Collar, with Silicon Gripper

Please note that NIMBLEWEAR logo must appear on the upper chest area (left or right), side panels and on the center of lower back for all the suits.



PRE-DYED LYCRA:



COLORS USED:



FLATLOCK COLOR OPTIONS:



- This template can be edited with vector graphic software programs. Adobe Illustrator CS5 is recommended.
- All logos must be provided in vector format and all fonts must be converted into outline.
- The color on-screen may vary from the finished product. To confirm the color please refer to PANTONE® MATCHING SYSTEM FORMULA GUIDE Solid Coated.
- We will try the best to match the PANTONE® colors when printing, but exact matching cannot be guaranteed, due to variation in temperature, humidity and materials.

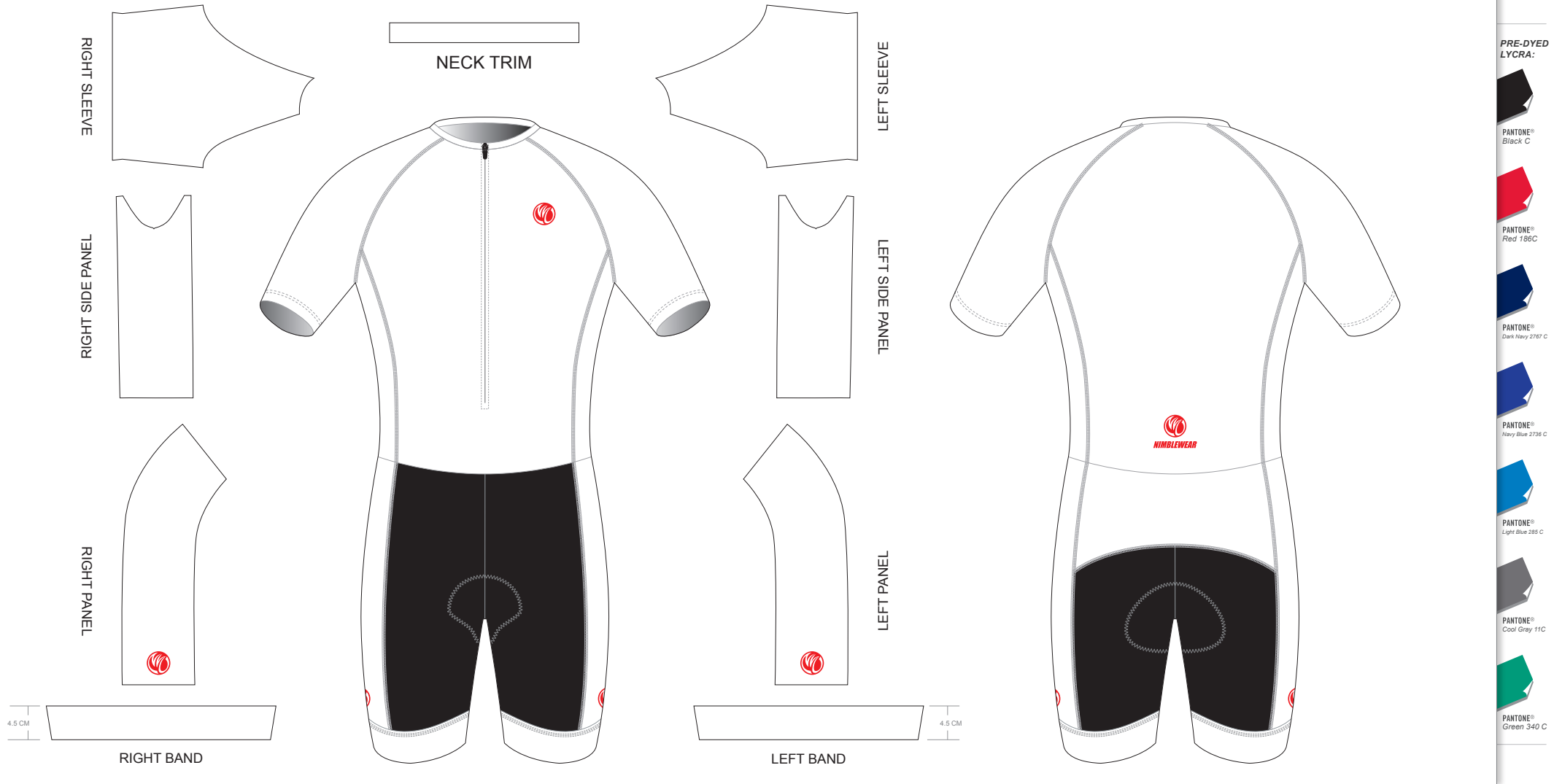
AK008 Short Sleeve Cycling Speed Skinsuit

CUSTOMER: _____ VERSION: 1
 DESIGN REQUEST NUMBER: _____ DATE: 00/00/2015
 www.nimblewear.com sales@nimblewear.com



C Style, without Collar, with 4.5 CM Power Band

Please note that NIMBLEWEAR logo must appear on the upper chest area (left or right), side panels and on the center of lower back for all the suits. NIMBLEWEAR standard power band for bib shorts is 4.5 CM in width. 7.5 CM power band is available upon customer's request.



COLORS USED:



FLATLOCK COLOR OPTIONS:



- This template can be edited with vector graphic software programs. Adobe Illustrator CS5 is recommended.
- All logos must be provided in vector format and all fonts must be converted into outline.
- The color on-screen may vary from the finished product. To confirm the color please refer to PANTONE® MATCHING SYSTEM FORMULA GUIDE Solid Coated.
- We will try the best to match the PANTONE® colors when printing, but exact matching cannot be guaranteed, due to variation in temperature, humidity and materials.

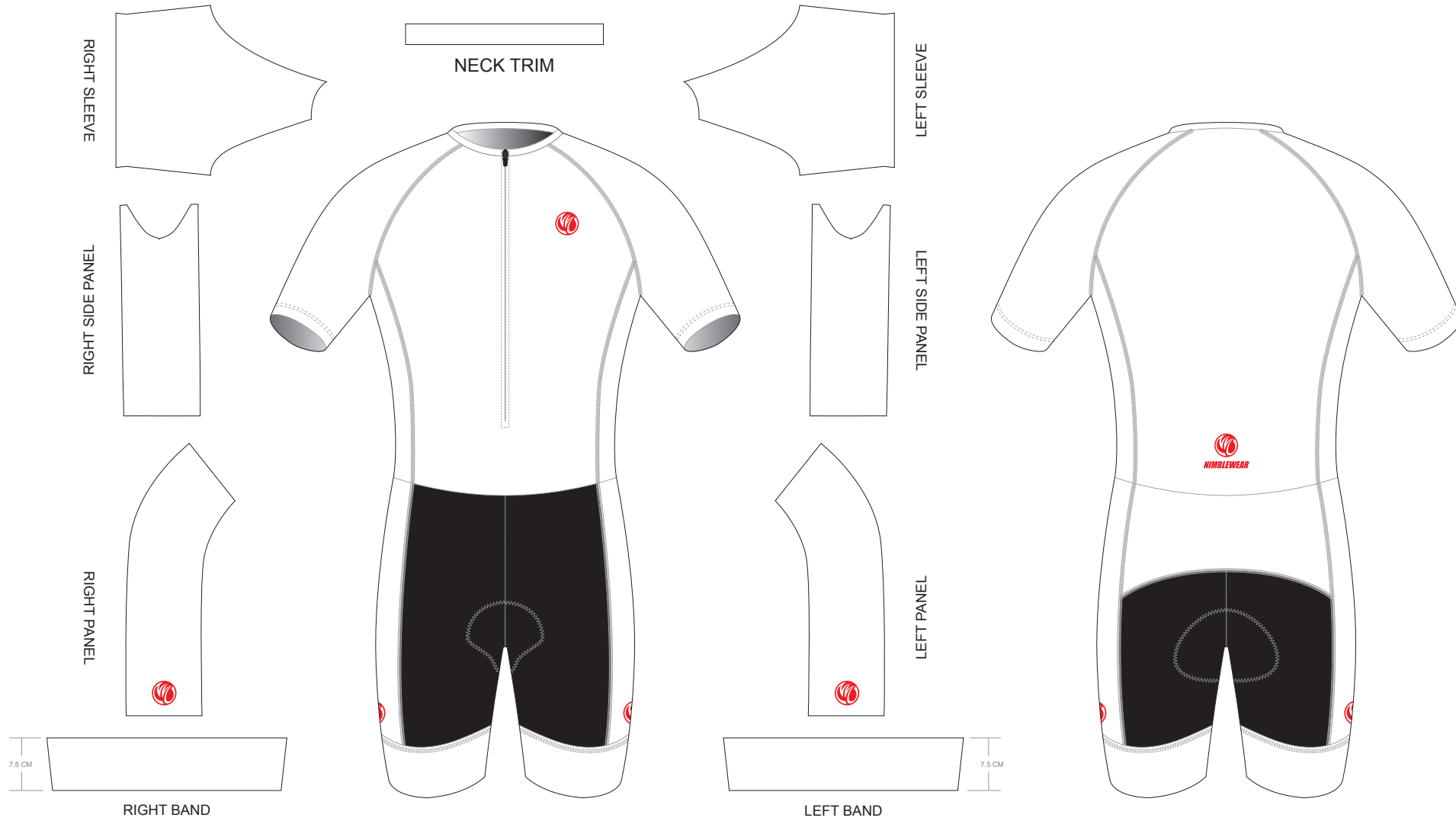
AK009 Short Sleeve Cycling Speed Skinsuit

CUSTOMER: _____ VERSION: 1
 DESIGN REQUEST NUMBER: _____ DATE: 00/00/2015
 www.nimblewear.com sales@nimblewear.com



C Style, without Collar, with 7.5 CM Power Band

Please note that NIMBLEWEAR logo must appear on the upper chest area (left or right), side panels and on the center of lower back for all the suits. NIMBLEWEAR standard power band for bib shorts is 4.5 CM in width. 7.5 CM power band is available upon customer's request.



PRE-DYED LYCRA:



COLORS USED:



FLATLOCK COLOR OPTIONS:



- This template can be edited with vector graphic software programs. Adobe Illustrator CS5 is recommended.
- All logos must be provided in vector format and all fonts must be converted into outline.
- The color on-screen may vary from the finished product. To confirm the color please refer to PANTONE® MATCHING SYSTEM FORMULA GUIDE Solid Coated.
- We will try the best to match the PANTONE® colors when printing, but exact matching cannot be guaranteed, due to variation in temperature, humidity and materials.

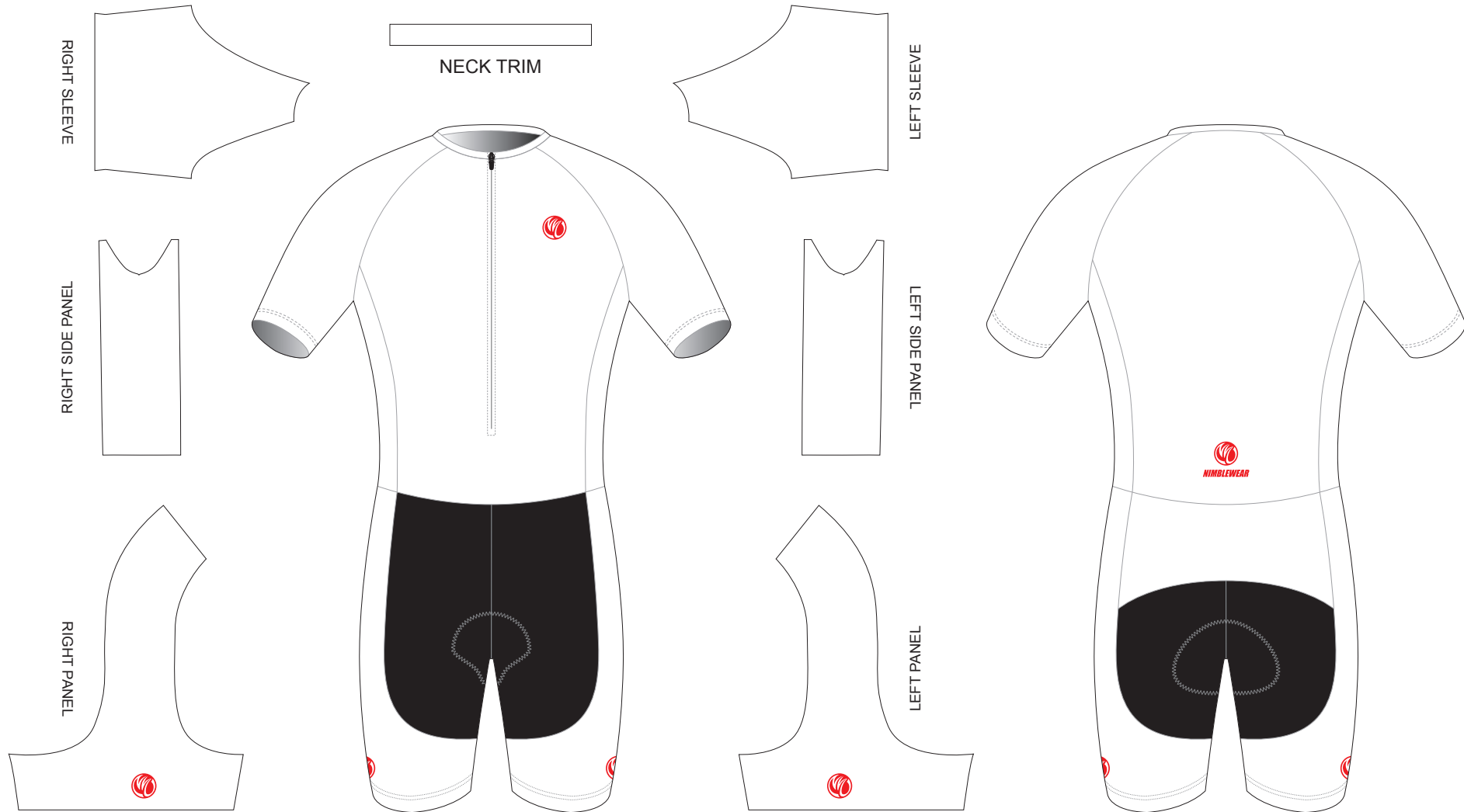
AK010 Short Sleeve Cycling Speed Skinsuit

CUSTOMER: _____ VERSION: 1
 DESIGN REQUEST NUMBER: _____ DATE: 00 / 00 / 2015
 www.nimblewear.com sales@nimblewear.com



T Style, without Collar, with Silicon Gripper

Please note that NIMBLEWEAR logo must appear on the upper chest area (left or right), side panels and on the center of lower back for all the suits.



PRE-DYED LYCRA:



COLORS USED:



FLATLOCK COLOR OPTIONS:



- This template can be edited with vector graphic software programs. Adobe Illustrator CS5 is recommended.
- All logos must be provided in vector format and all fonts must be converted into outline.
- The color on-screen may vary from the finished product. To confirm the color please refer to PANTONE® MATCHING SYSTEM FORMULA GUIDE Solid Coated.
- We will try the best to match the PANTONE® colors when printing, but exact matching cannot be guaranteed, due to variation in temperature, humidity and materials.

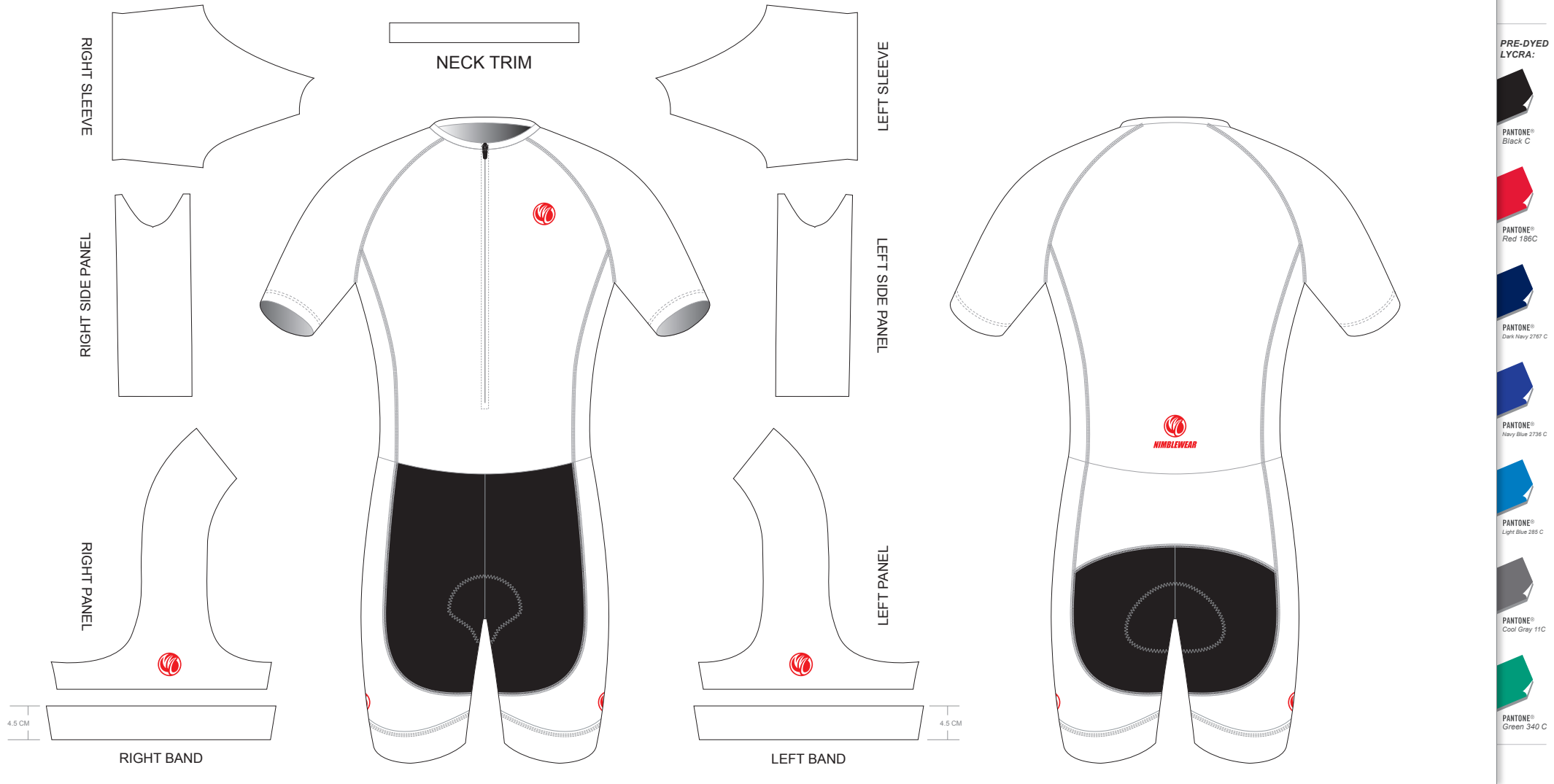
AK011 Short Sleeve Cycling Speed Skinsuit

CUSTOMER: _____ VERSION: 1
 DESIGN REQUEST NUMBER: _____ DATE: 00/00/2015
 www.nimblewear.com sales@nimblewear.com



T Style, without Collar, with 4.5 CM Power Band

Please note that NIMBLEWEAR logo must appear on the upper chest area (left or right), side panels and on the center of lower back for all the suits. NIMBLEWEAR standard power band for bib shorts is 4.5 CM in width. 7.5 CM power band is available upon customer's request.



COLORS USED:



FLATLOCK COLOR OPTIONS:



- This template can be edited with vector graphic software programs. Adobe Illustrator CS5 is recommended.
- All logos must be provided in vector format and all fonts must be converted into outline.
- The color on-screen may vary from the finished product. To confirm the color please refer to PANTONE® MATCHING SYSTEM FORMULA GUIDE Solid Coated.
- We will try the best to match the PANTONE® colors when printing, but exact matching cannot be guaranteed, due to variation in temperature, humidity and materials.

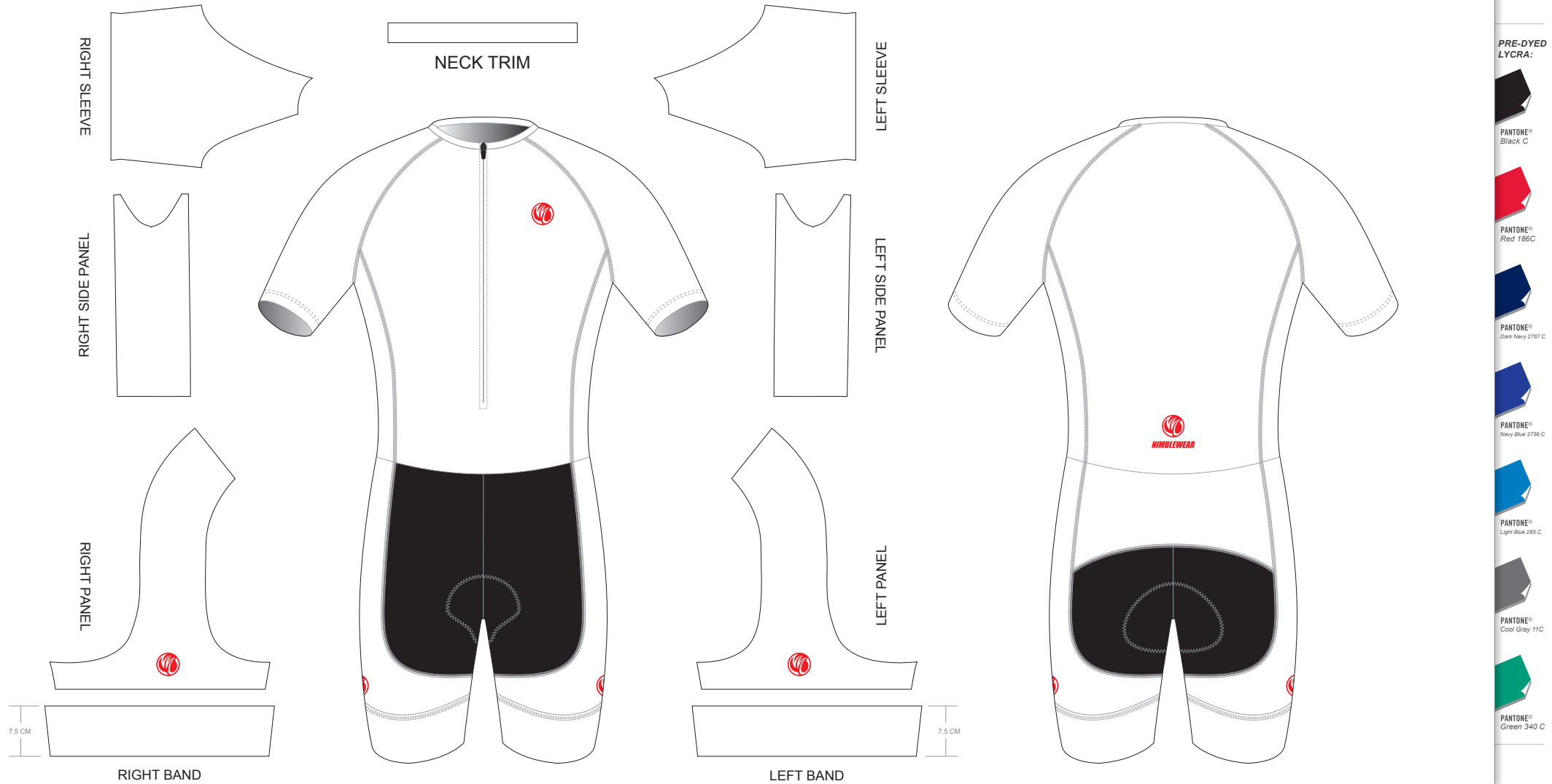
AK012 Short Sleeve Cycling Speed Skinsuit

CUSTOMER: _____ VERSION: 1
 DESIGN REQUEST NUMBER: _____ DATE: 00/00/2015
 www.nimblewear.com sales@nimblewear.com



T Style, without Collar, with 7.5 CM Power Band

Please note that NIMBLEWEAR logo must appear on the upper chest area (left or right), side panels and on the center of lower back for all the suits. NIMBLEWEAR standard power band for bib shorts is 4.5 CM in width. 7.5 CM power band is available upon customer's request.



PRE-DYED LYCRA:

- PANTONE® Black C
- PANTONE® Red 186C
- PANTONE® Dark Navy 2767 C
- PANTONE® Navy Blue 2739 C
- PANTONE® Light Blue 285 C
- PANTONE® Cool Grey 11C
- PANTONE® Green 340 C

COLORS USED:



FLATLOCK COLOR OPTIONS:



- This template can be edited with vector graphic software programs. Adobe Illustrator CS5 is recommended.
- All logos must be provided in vector format and all fonts must be converted into outline.
- The color on-screen may vary from the finished product. To confirm the color please refer to PANTONE® MATCHING SYSTEM FORMULA GUIDE Solid Coated.
- We will try the best to match the PANTONE® colors when printing, but exact matching cannot be guaranteed, due to variation in temperature, humidity and materials.

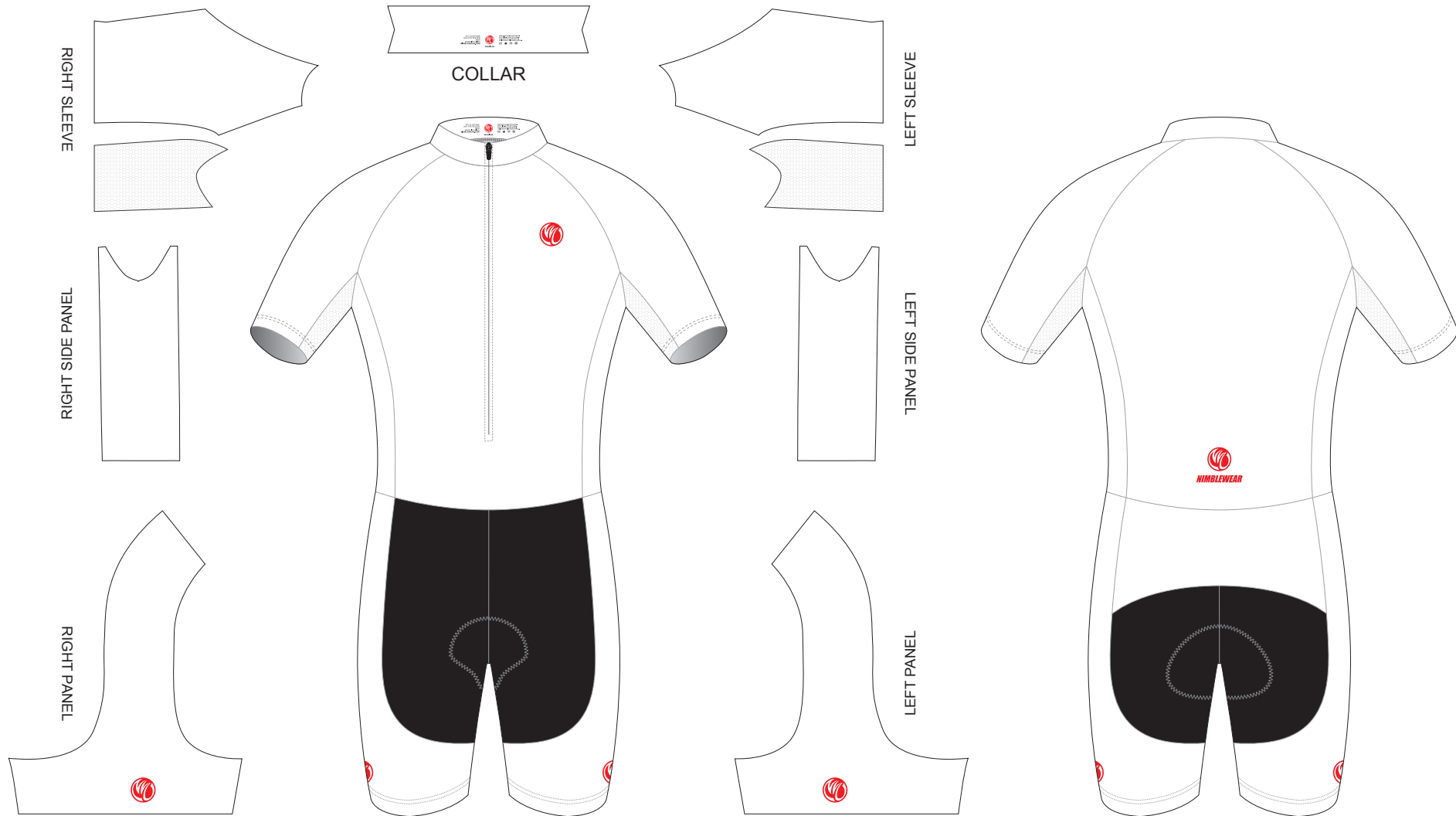
AK013 Short Sleeve Cycling Speed Skinsuit

CUSTOMER: _____ VERSION: 1
 DESIGN REQUEST NUMBER: _____ DATE: 00 / 00 / 2015
 www.nimblewear.com sales@nimblewear.com



T Style, with Collar, with Silicon Gripper, with Mesh Underarm Panels

Please note that NIMBLEWEAR logo must appear on the upper chest area (left or right), side panels and on the center of lower back for all the suits.



PRE-DYED LYCRA:



COLORS USED:



FLATLOCK COLOR OPTIONS:



- This template can be edited with vector graphic software programs. Adobe Illustrator CS5 is recommended.
- All logos must be provided in vector format and all fonts must be converted into outline.
- The color on-screen may vary from the finished product. To confirm the color please refer to PANTONE® MATCHING SYSTEM FORMULA GUIDE Solid Coated.
- We will try the best to match the PANTONE® colors when printing, but exact matching cannot be guaranteed, due to variation in temperature, humidity and materials.

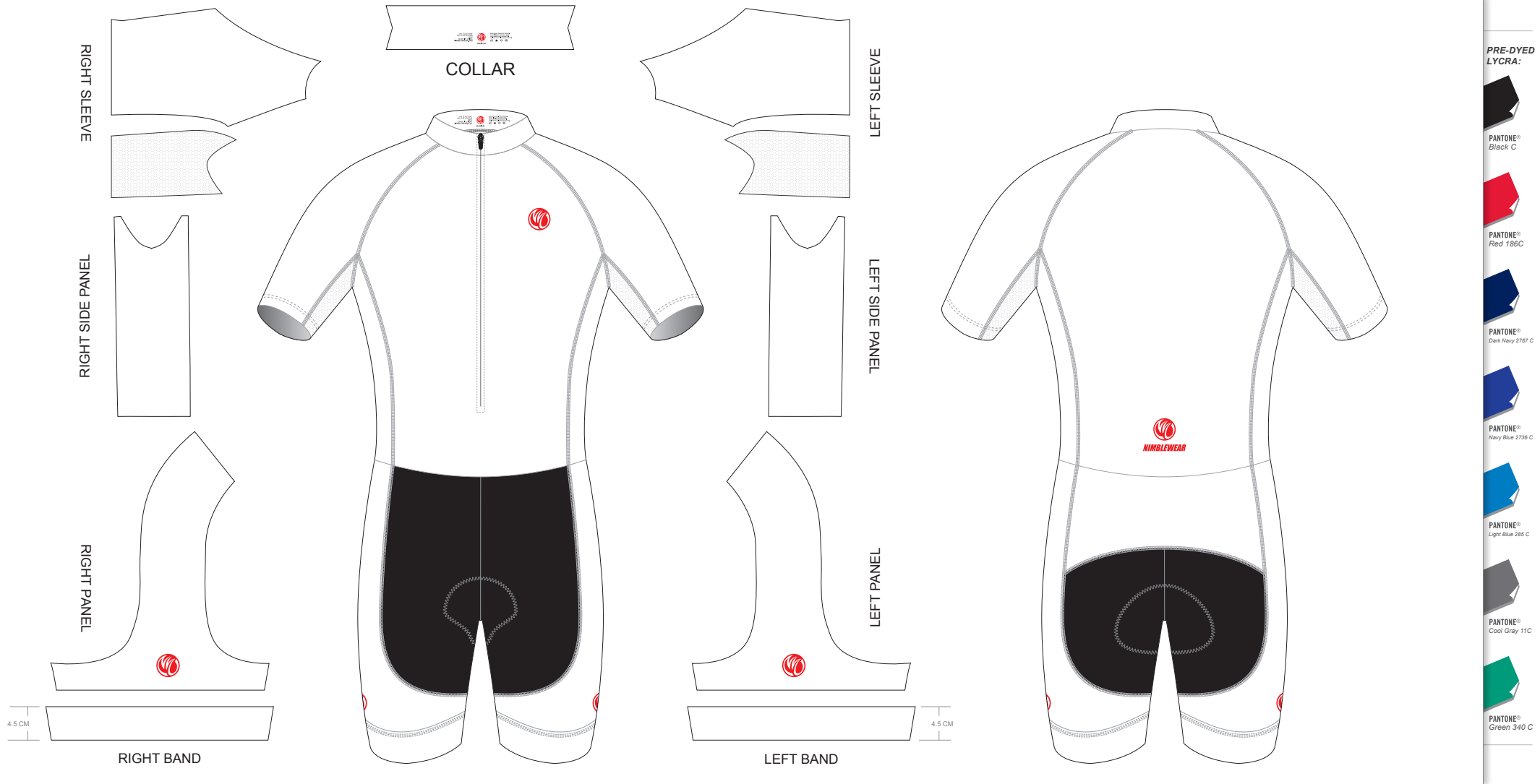
AK014 Short Sleeve Cycling Speed Skinsuit

CUSTOMER: _____ VERSION: 1
 DESIGN REQUEST NUMBER: _____ DATE: 00/00/2015
 www.nimblewear.com sales@nimblewear.com



T Style, with Collar, with 4.5 CM Power Band, with Mesh Underarm Panels

Please note that NIMBLEWEAR logo must appear on the upper chest area (left or right), side panels and on the center of lower back for all the suits. NIMBLEWEAR standard power band for bib shorts is 4.5 CM in width. 7.5 CM power band is available upon customer's request.



COLORS USED:



FLATLOCK COLOR OPTIONS:



- This template can be edited with vector graphic software programs. Adobe Illustrator CS5 is recommended.
- All logos must be provided in vector format and all fonts must be converted into outline.
- The color on-screen may vary from the finished product. To confirm the color please refer to PANTONE® MATCHING SYSTEM FORMULA GUIDE Solid Coated.
- We will try the best to match the PANTONE® colors when printing, but exact matching cannot be guaranteed, due to variation in temperature, humidity and materials.

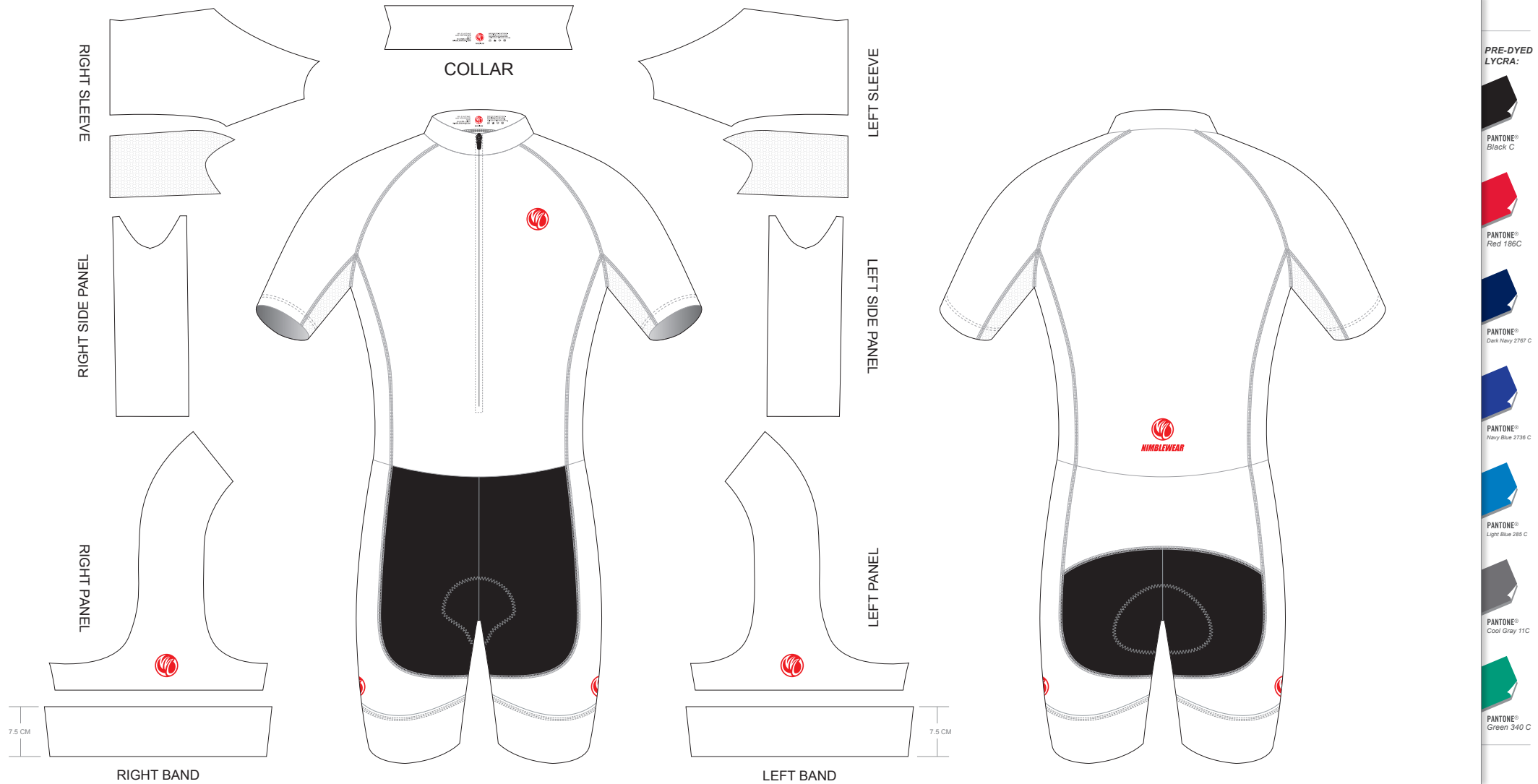
AK015 Short Sleeve Cycling Speed Skinsuit

CUSTOMER: _____ VERSION: 1
 DESIGN REQUEST NUMBER: _____ DATE: 00/00/2015
 www.nimblewear.com sales@nimblewear.com



T Style, with Collar, with 7.5 CM Power Band, with Mesh Underarm Panels

Please note that NIMBLEWEAR logo must appear on the upper chest area (left or right), side panels and on the center of lower back for all the suits. NIMBLEWEAR standard power band for bib shorts is 4.5 CM in width. 7.5 CM power band is available upon customer's request.



PRE-DYED LYCRA:



COLORS USED:



FLATLOCK COLOR OPTIONS:



- This template can be edited with vector graphic software programs. Adobe Illustrator CS5 is recommended.
- All logos must be provided in vector format and all fonts must be converted into outline.
- The color on-screen may vary from the finished product. To confirm the color please refer to PANTONE® MATCHING SYSTEM FORMULA GUIDE Solid Coated.
- We will try the best to match the PANTONE® colors when printing, but exact matching cannot be guaranteed, due to variation in temperature, humidity and materials.

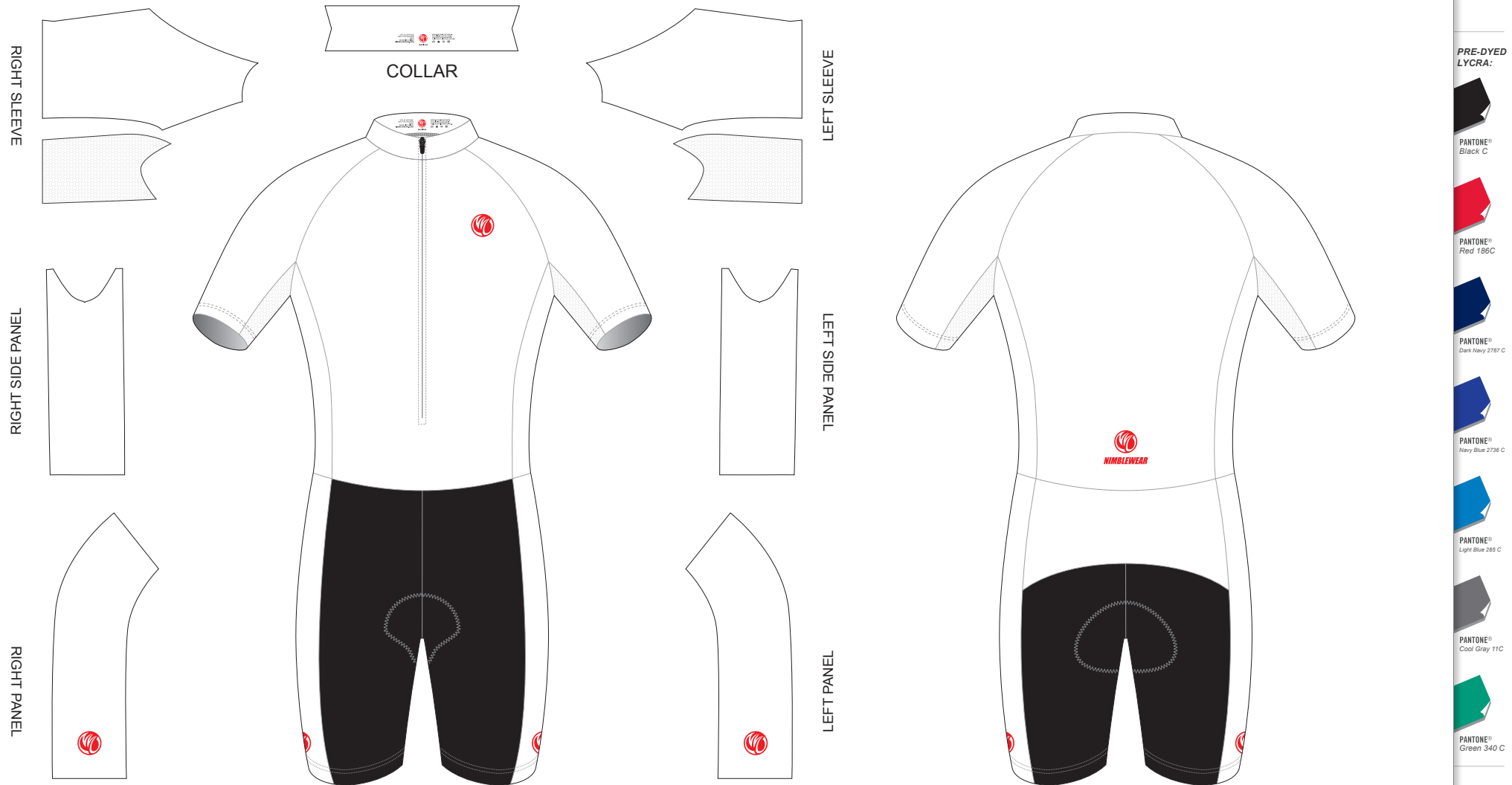
AK016 Short Sleeve Cycling Speed Skinsuit

CUSTOMER: _____ VERSION: 1
 DESIGN REQUEST NUMBER: _____ DATE: 00 / 00 / 2015
 www.nimblewear.com sales@nimblewear.com



C Style, with Collar, with Silicon Gripper, with Mesh Underarm Panels

Please note that NIMBLEWEAR logo must appear on the upper chest area (left or right), side panels and on the center of lower back for all the suits.



COLORS USED:



FLATLOCK COLOR OPTIONS:



- This template can be edited with vector graphic software programs. Adobe Illustrator CS5 is recommended.
- All logos must be provided in vector format and all fonts must be converted into outline.
- The color on-screen may vary from the finished product. To confirm the color please refer to PANTONE® MATCHING SYSTEM FORMULA GUIDE Solid Coated.
- We will try the best to match the PANTONE® colors when printing, but exact matching cannot be guaranteed, due to variation in temperature, humidity and materials.

PRE-DYED LYCRA:



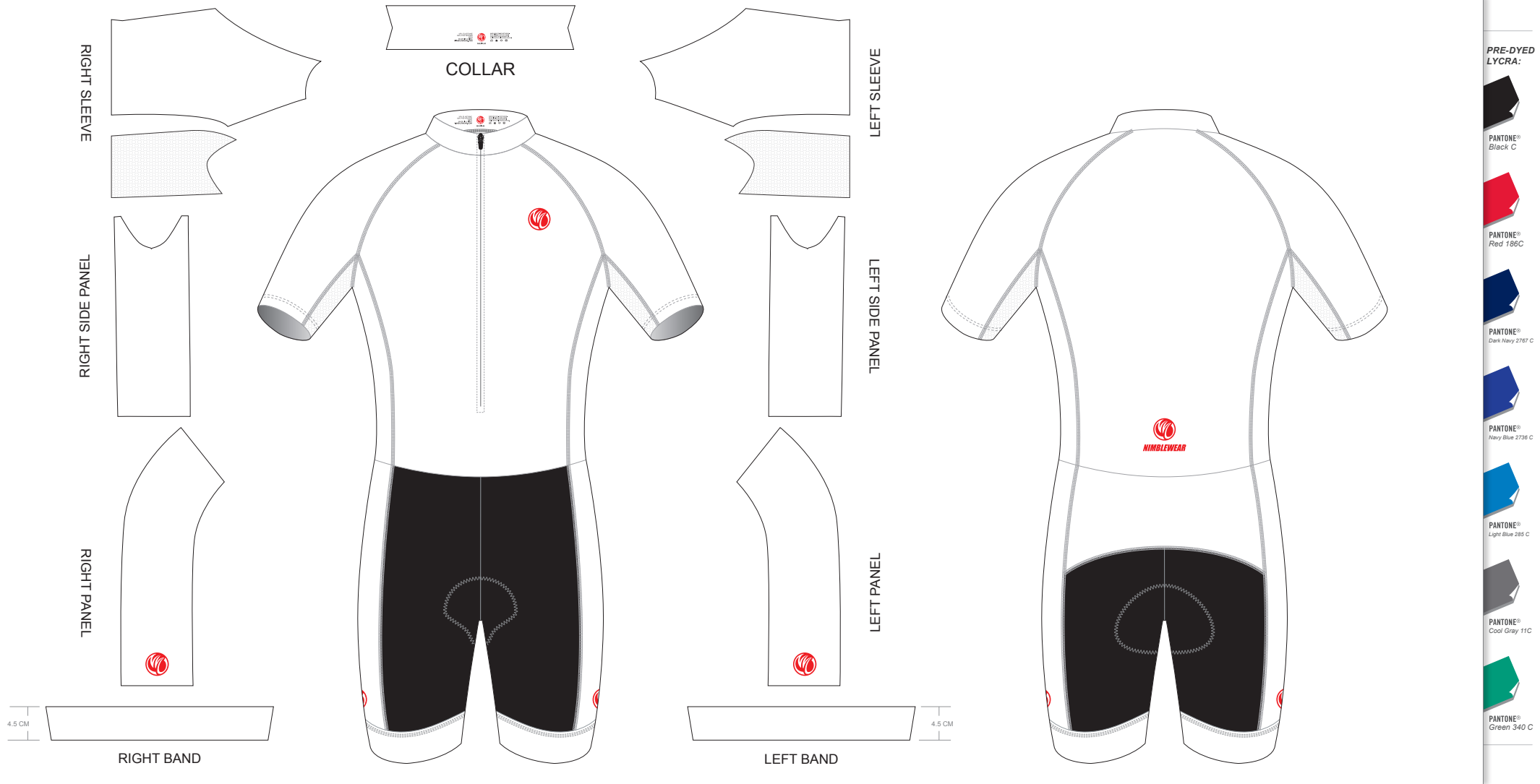
AK017 Short Sleeve Cycling Speed Skinsuit

CUSTOMER: _____ VERSION: 1
 DESIGN REQUEST NUMBER: _____ DATE: 00/00/2015
 www.nimblewear.com sales@nimblewear.com



C Style, with Collar, with 4.5 CM Power Band, with Mesh Underarm Panels

Please note that NIMBLEWEAR logo must appear on the upper chest area (left or right), side panels and on the center of lower back for all the suits. NIMBLEWEAR standard power band for bib shorts is 4.5 CM in width. 7.5 CM power band is available upon customer's request.



PRE-DYED LYCRA:



COLORS USED:



FLATLOCK COLOR OPTIONS:



- This template can be edited with vector graphic software programs. Adobe Illustrator CS5 is recommended.
- All logos must be provided in vector format and all fonts must be converted into outline.
- The color on-screen may vary from the finished product. To confirm the color please refer to PANTONE® MATCHING SYSTEM FORMULA GUIDE Solid Coated.
- We will try the best to match the PANTONE® colors when printing, but exact matching cannot be guaranteed, due to variation in temperature, humidity and materials.

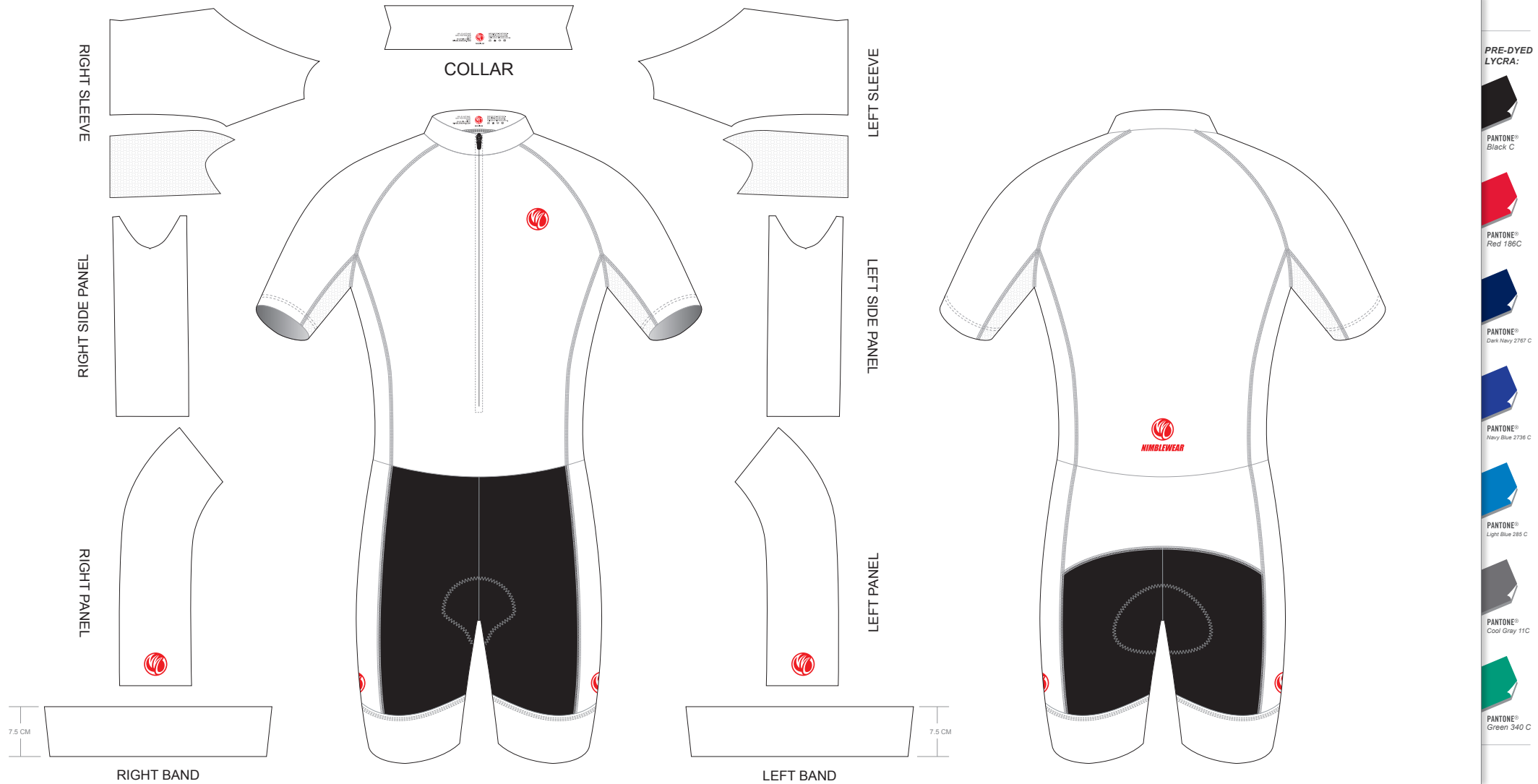
AK018 Short Sleeve Cycling Speed Skinsuit

CUSTOMER: _____ VERSION: 1
 DESIGN REQUEST NUMBER: _____ DATE: 00/00/2015
 www.nimblewear.com sales@nimblewear.com



C Style, with Collar, with 7.5 CM Power Band, with Mesh Underarm Panels

Please note that NIMBLEWEAR logo must appear on the upper chest area (left or right), side panels and on the center of lower back for all the suits. NIMBLEWEAR standard power band for bib shorts is 4.5 CM in width. 7.5 CM power band is available upon customer's request.



PRE-DYED LYCRA:



COLORS USED:



FLATLOCK COLOR OPTIONS:



- This template can be edited with vector graphic software programs. Adobe Illustrator CS5 is recommended.
- All logos must be provided in vector format and all fonts must be converted into outline.
- The color on-screen may vary from the finished product. To confirm the color please refer to PANTONE® MATCHING SYSTEM FORMULA GUIDE Solid Coated.
- We will try the best to match the PANTONE® colors when printing, but exact matching cannot be guaranteed, due to variation in temperature, humidity and materials.

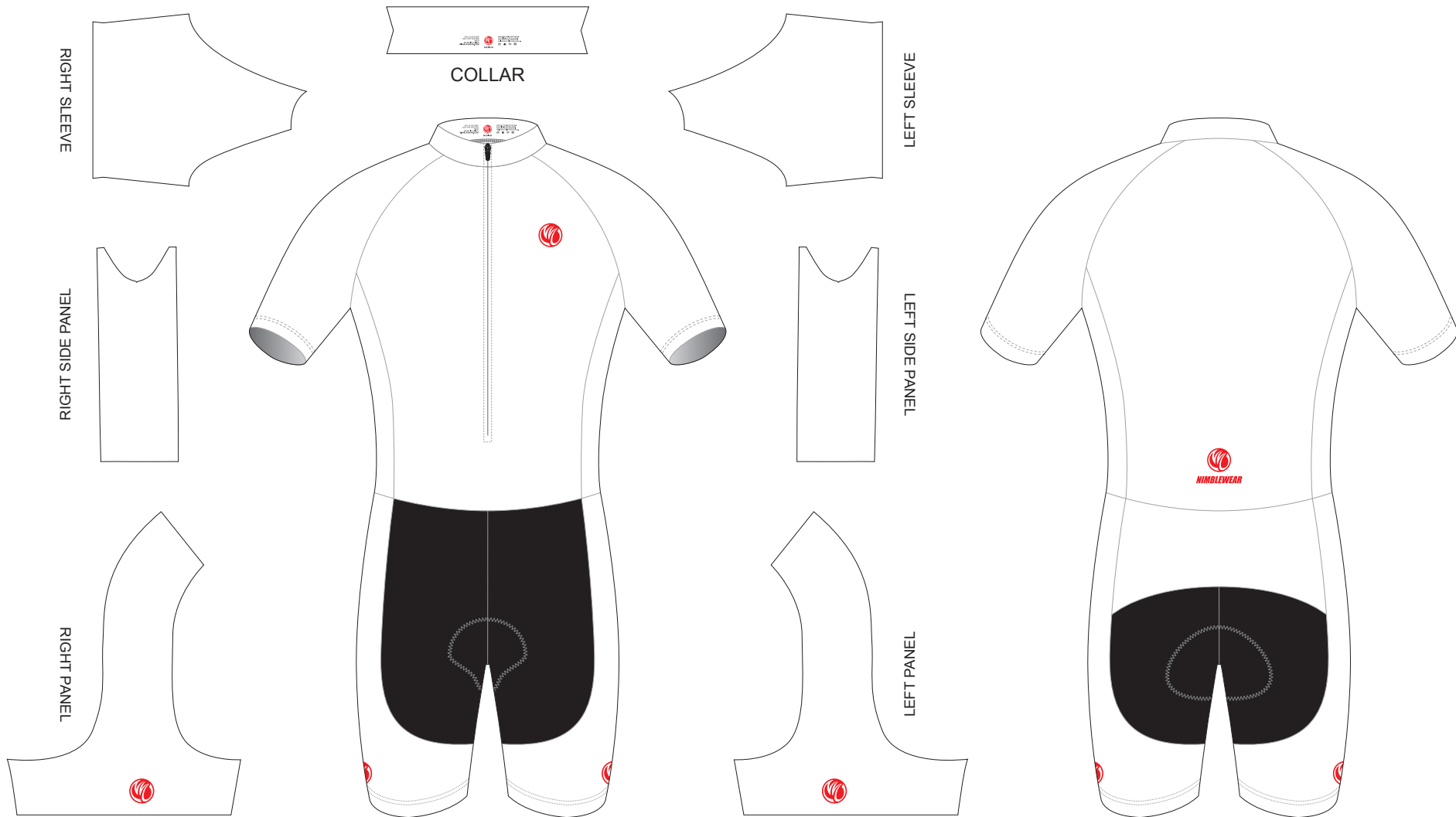
AK019 Short Sleeve Cycling Speed Skinsuit

CUSTOMER: _____ VERSION: 1
 DESIGN REQUEST NUMBER: _____ DATE: 00 / 00 / 2015
 www.nimblewear.com sales@nimblewear.com



T Style, with Collar, with Silicon Gripper

Please note that NIMBLEWEAR logo must appear on the upper chest area (left or right), side panels and on the center of lower back for all the suits.



PRE-DYED LYCRA:



COLORS USED:



FLATLOCK COLOR OPTIONS:



- This template can be edited with vector graphic software programs. Adobe Illustrator CS5 is recommended.
- All logos must be provided in vector format and all fonts must be converted into outline.
- The color on-screen may vary from the finished product. To confirm the color please refer to PANTONE® MATCHING SYSTEM FORMULA GUIDE Solid Coated.
- We will try the best to match the PANTONE® colors when printing, but exact matching cannot be guaranteed, due to variation in temperature, humidity and materials.

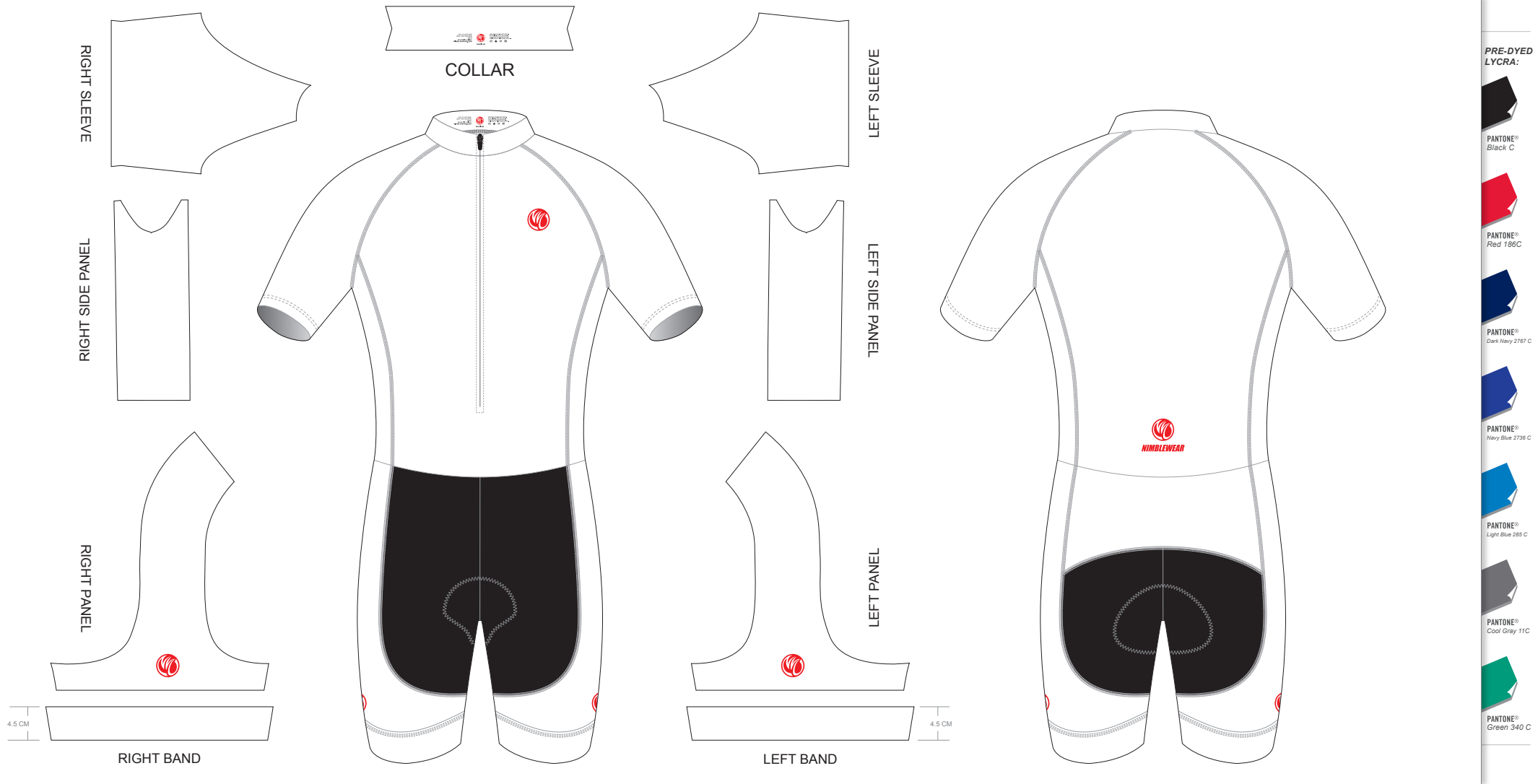
AK020 Short Sleeve Cycling Speed Skinsuit

CUSTOMER: _____ VERSION: 1
 DESIGN REQUEST NUMBER: _____ DATE: 00/00/2015
 www.nimblewear.com sales@nimblewear.com



T Style, with Collar, with 4.5 CM Power Band

Please note that NIMBLEWEAR logo must appear on the upper chest area (left or right), side panels and on the center of lower back for all the suits. NIMBLEWEAR standard power band for bib shorts is 4.5 CM in width. 7.5 CM power band is available upon customer's request.



PRE-DYED LYCRA:



COLORS USED:



FLATLOCK COLOR OPTIONS:



- This template can be edited with vector graphic software programs. Adobe Illustrator CS5 is recommended.
- All logos must be provided in vector format and all fonts must be converted into outline.
- The color on-screen may vary from the finished product. To confirm the color please refer to PANTONE® MATCHING SYSTEM FORMULA GUIDE Solid Coated.
- We will try the best to match the PANTONE® colors when printing, but exact matching cannot be guaranteed, due to variation in temperature, humidity and materials.

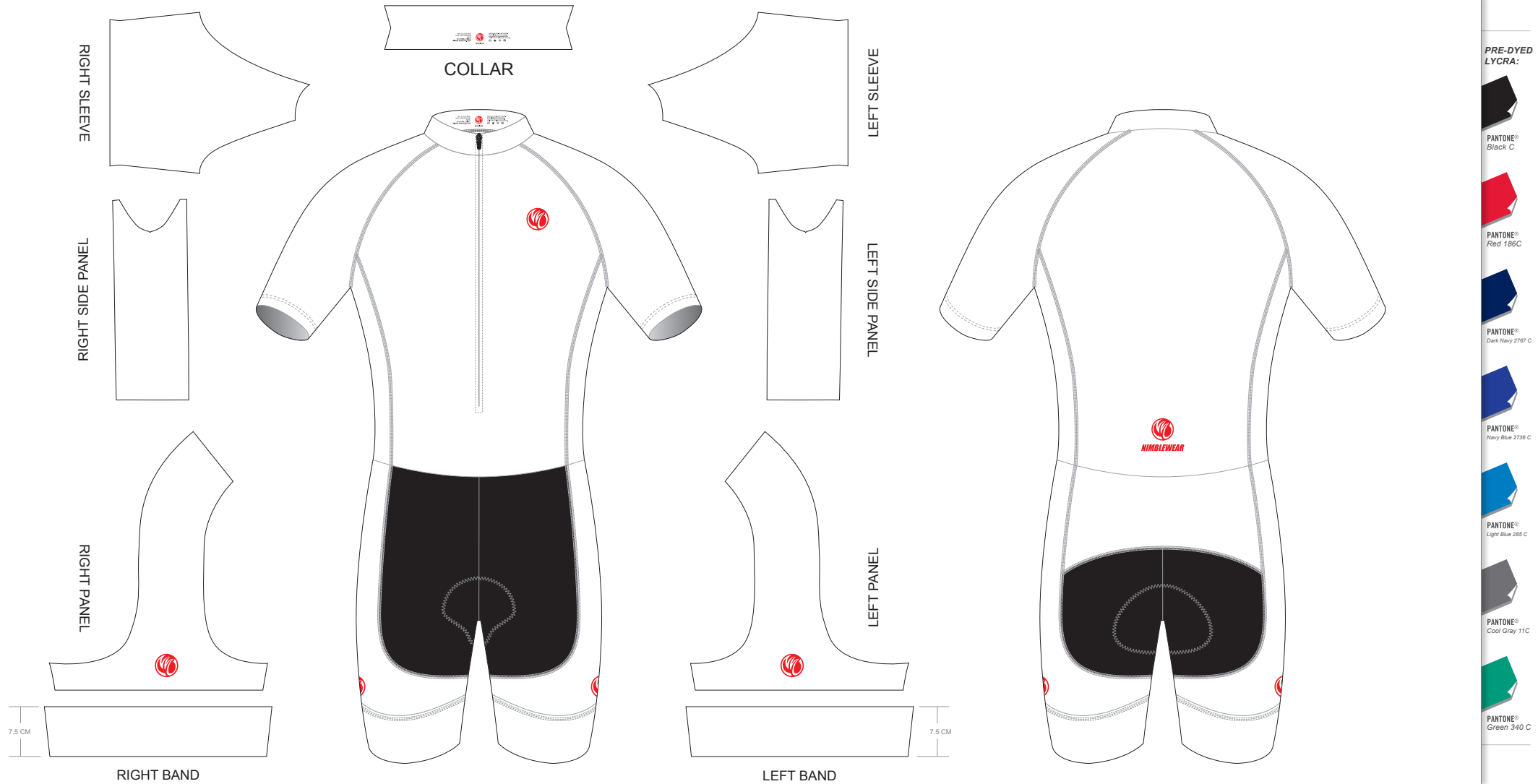
AK021 Short Sleeve Cycling Speed Skinsuit

CUSTOMER: _____ VERSION: 1
 DESIGN REQUEST NUMBER: _____ DATE: 00/00/2015
 www.nimblewear.com sales@nimblewear.com



T Style, with Collar, with 7.5 CM Power Band

Please note that NIMBLEWEAR logo must appear on the upper chest area (left or right), side panels and on the center of lower back for all the suits. NIMBLEWEAR standard power band for bib shorts is 4.5 CM in width. 7.5 CM power band is available upon customer's request.



COLORS USED:



FLATLOCK COLOR OPTIONS:



- This template can be edited with vector graphic software programs. Adobe Illustrator CS5 is recommended.
- All logos must be provided in vector format and all fonts must be converted into outline.
- The color on-screen may vary from the finished product. To confirm the color please refer to PANTONE® MATCHING SYSTEM FORMULA GUIDE Solid Coated.
- We will try the best to match the PANTONE® colors when printing, but exact matching cannot be guaranteed, due to variation in temperature, humidity and materials.

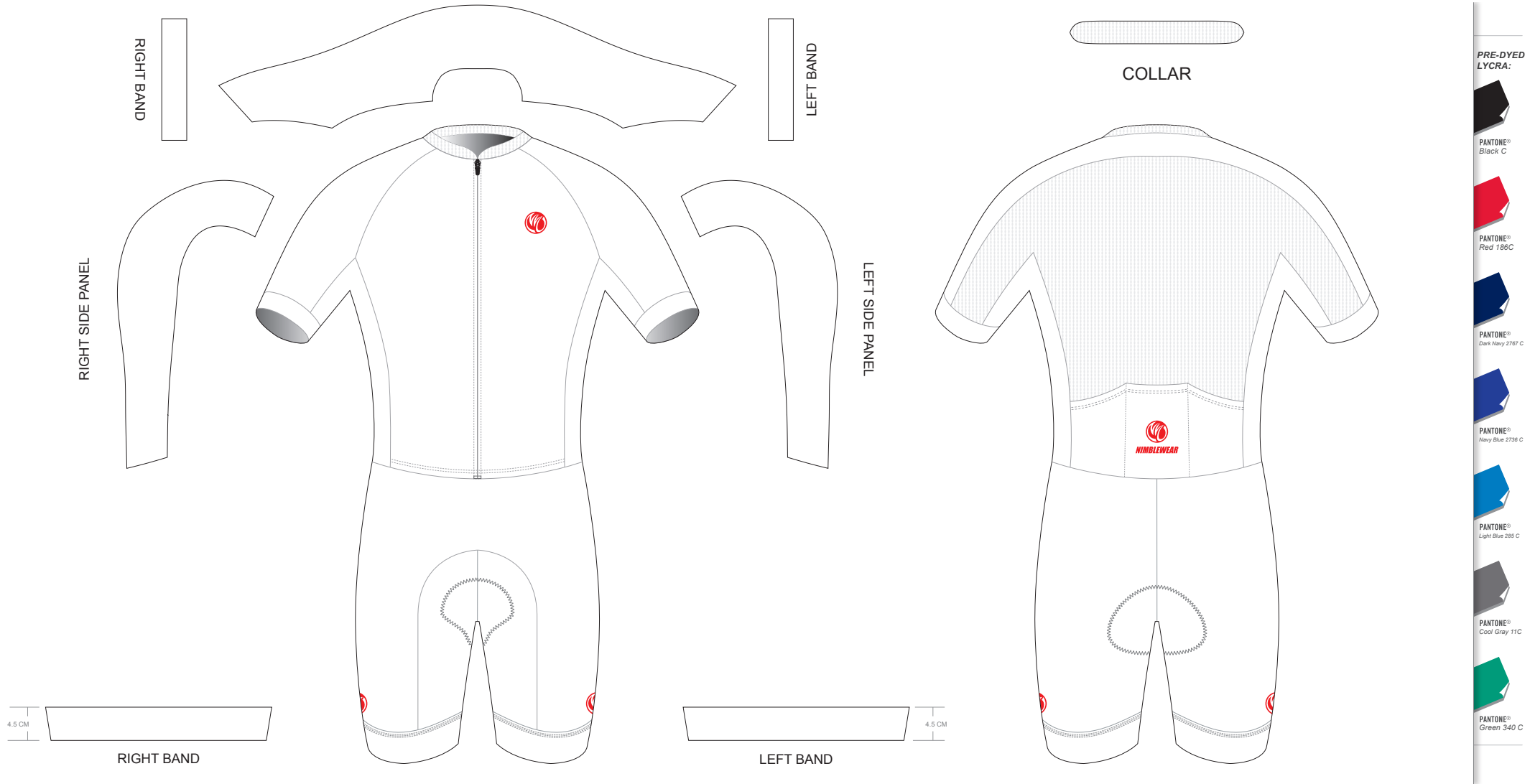
AK022 Short Sleeve Cycling Speed Skinsuit

CUSTOMER: _____ VERSION: 1
 DESIGN REQUEST NUMBER: _____ DATE: 00/00/2015
 www.nimblewear.com sales@nimblewear.com



with Collar, with 4.5 CM Power Band

Please note that NIMBLEWEAR logo must appear on the upper chest area (left or right), side panels and on the center of lower back for all the suits. NIMBLEWEAR standard power band for bib shorts is 4.5 CM in width. 7.5 CM power band is available upon customer's request.



PRE-DYED LYCRA:



COLORS USED:



FLATLOCK COLOR OPTIONS:



- This template can be edited with vector graphic software programs. Adobe Illustrator CS5 is recommended.
- All logos must be provided in vector format and all fonts must be converted into outline.
- The color on-screen may vary from the finished product. To confirm the color please refer to PANTONE® MATCHING SYSTEM FORMULA GUIDE Solid Coated.
- We will try the best to match the PANTONE® colors when printing, but exact matching cannot be guaranteed, due to variation in temperature, humidity and materials.

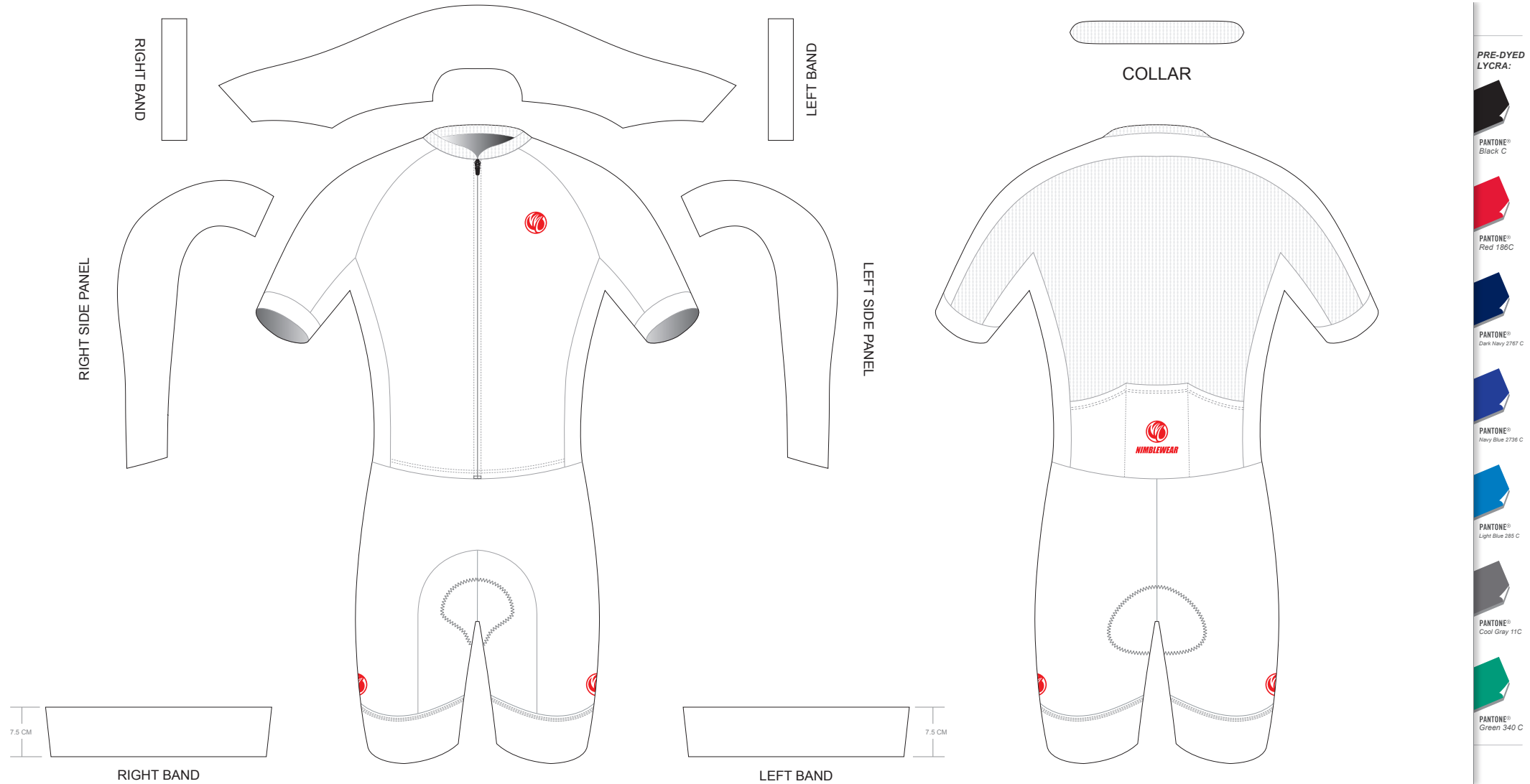
AK023 Short Sleeve Cycling Speed Skinsuit

CUSTOMER: _____ VERSION: 1
 DESIGN REQUEST NUMBER: _____ DATE: 00/00/2015
 www.nimblewear.com sales@nimblewear.com



with Collar, with 7.5 CM Power Band

Please note that NIMBLEWEAR logo must appear on the upper chest area (left or right), side panels and on the center of lower back for all the suits. NIMBLEWEAR standard power band for bib shorts is 4.5 CM in width. 7.5 CM power band is available upon customer's request.



COLORS USED:



FLATLOCK COLOR OPTIONS:



- This template can be edited with vector graphic software programs. Adobe Illustrator CS5 is recommended.
- All logos must be provided in vector format and all fonts must be converted into outline.
- The color on-screen may vary from the finished product. To confirm the color please refer to PANTONE® MATCHING SYSTEM FORMULA GUIDE Solid Coated.
- We will try the best to match the PANTONE® colors when printing, but exact matching cannot be guaranteed, due to variation in temperature, humidity and materials.

PRE-DYED LYCRA:

