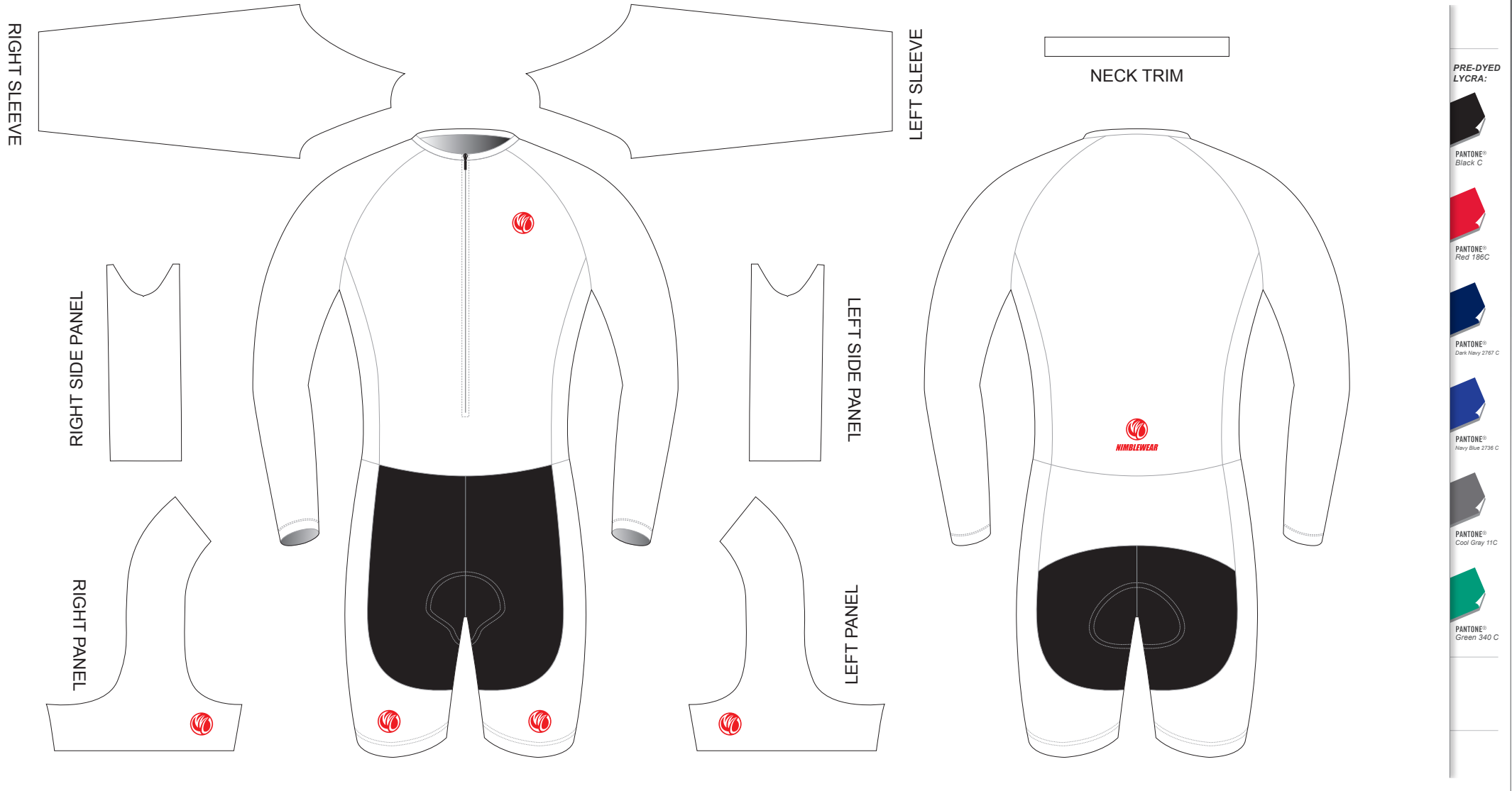


AOA01 Long Sleeve Cycling Skinsuit

T Style; without Collar

www.nimblewear.com
www.nimblewear.net



COLORS USED:



CUSTOMER: _____

DESIGN REQUEST NUMBER: _____

VERSION: 1

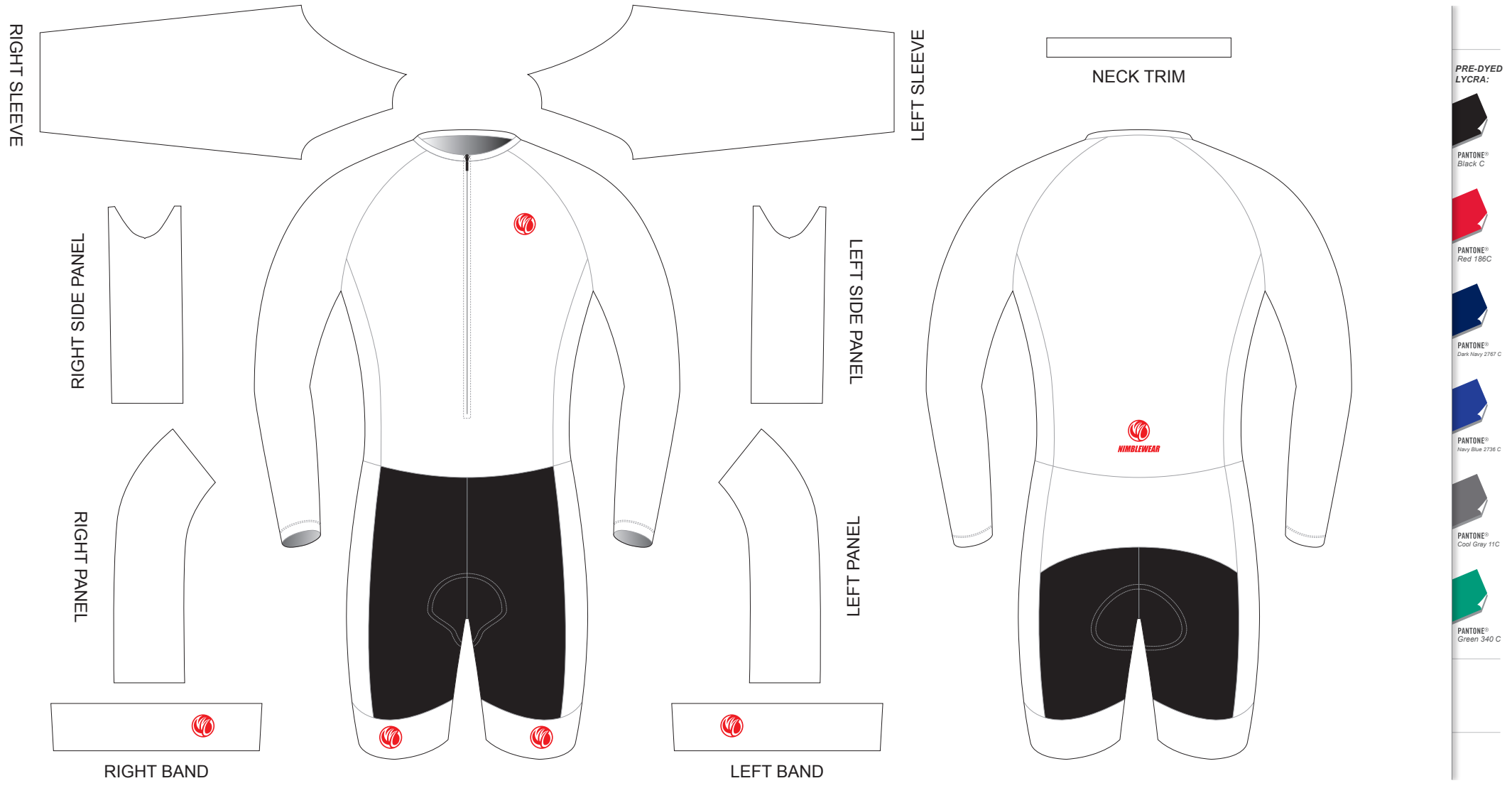
DATE: 00 / 00 / 2013

- This template can be edited with vector graphic software programs. Adobe Illustrator CS5 is recommended.
- All logos must be provided in vector format and all fonts must be converted into outline.
- The color on-screen may vary from the finished product. To confirm the color please refer to PANTONE® MATCHING SYSTEM FORMULA GUIDE Solid Coated.
- We will try the best to match the PANTONE® colors when printing, but exact matching cannot be guaranteed, due to variation in temperature, humidity and materials.

AOA02 Long Sleeve Cycling Skinsuit

Wide Band Style; without Collar

www.nimblewear.com
www.nimblewear.net



COLORS USED:



CUSTOMER: _____

DESIGN REQUEST NUMBER: _____

VERSION: 1

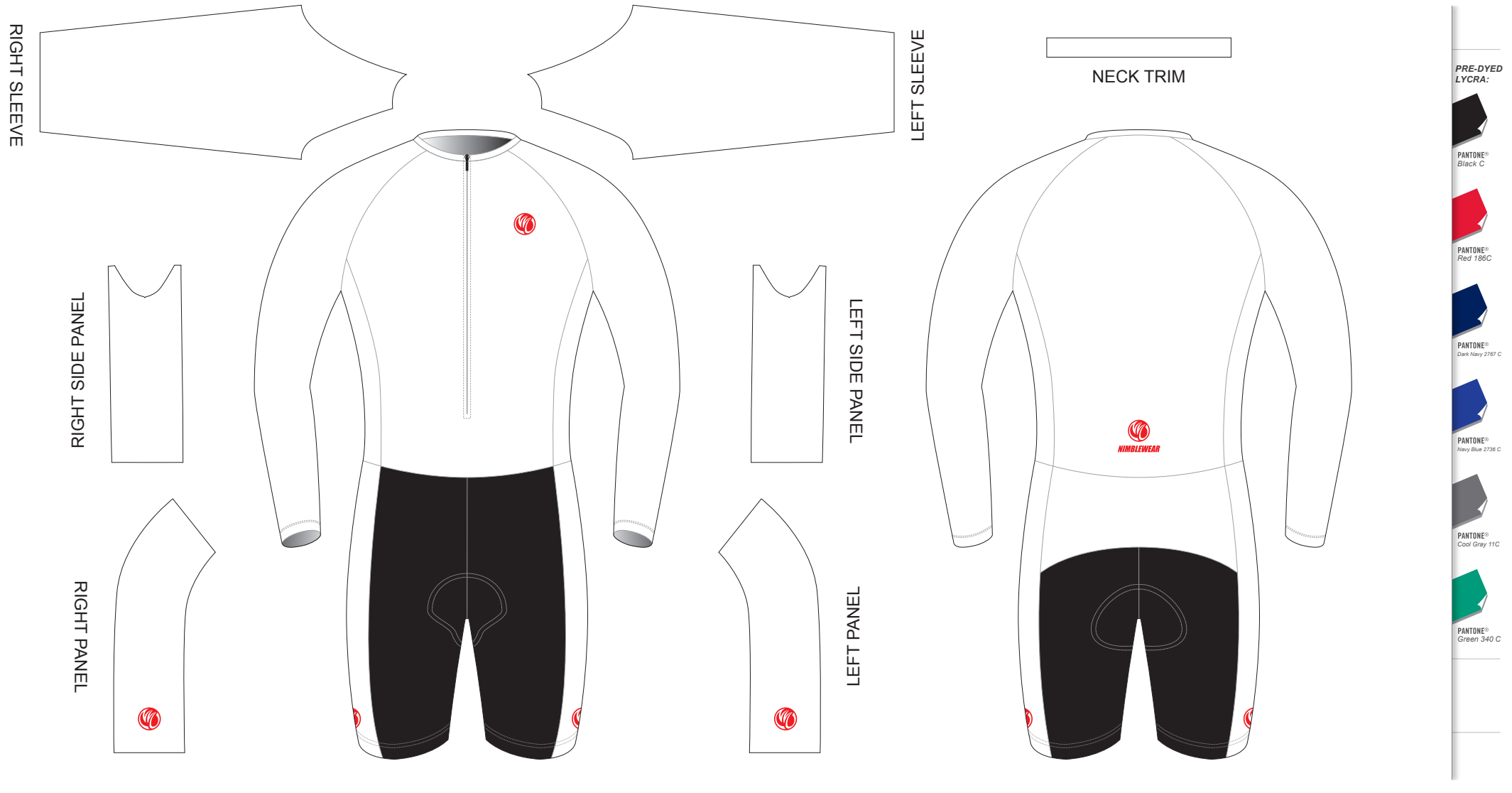
DATE: 00 / 00 / 2013

• This template can be edited with vector graphic software programs. Adobe Illustrator CS5 is recommended.
 • All logos must be provided in vector format and all fonts must be converted into outline.
 • The color on-screen may vary from the finished product. To confirm the color please refer to PANTONE® MATCHING SYSTEM FORMULA GUIDE Solid Coated.
 • We will try the best to match the PANTONE® colors when printing, but exact matching cannot be guaranteed, due to variation in temperature, humidity and materials.

AOA03 Long Sleeve Cycling Skinsuit

C Style; without Collar

www.nimblewear.com
www.nimblewear.net



COLORS USED:



CUSTOMER: _____

DESIGN REQUEST NUMBER: _____

VERSION: 1

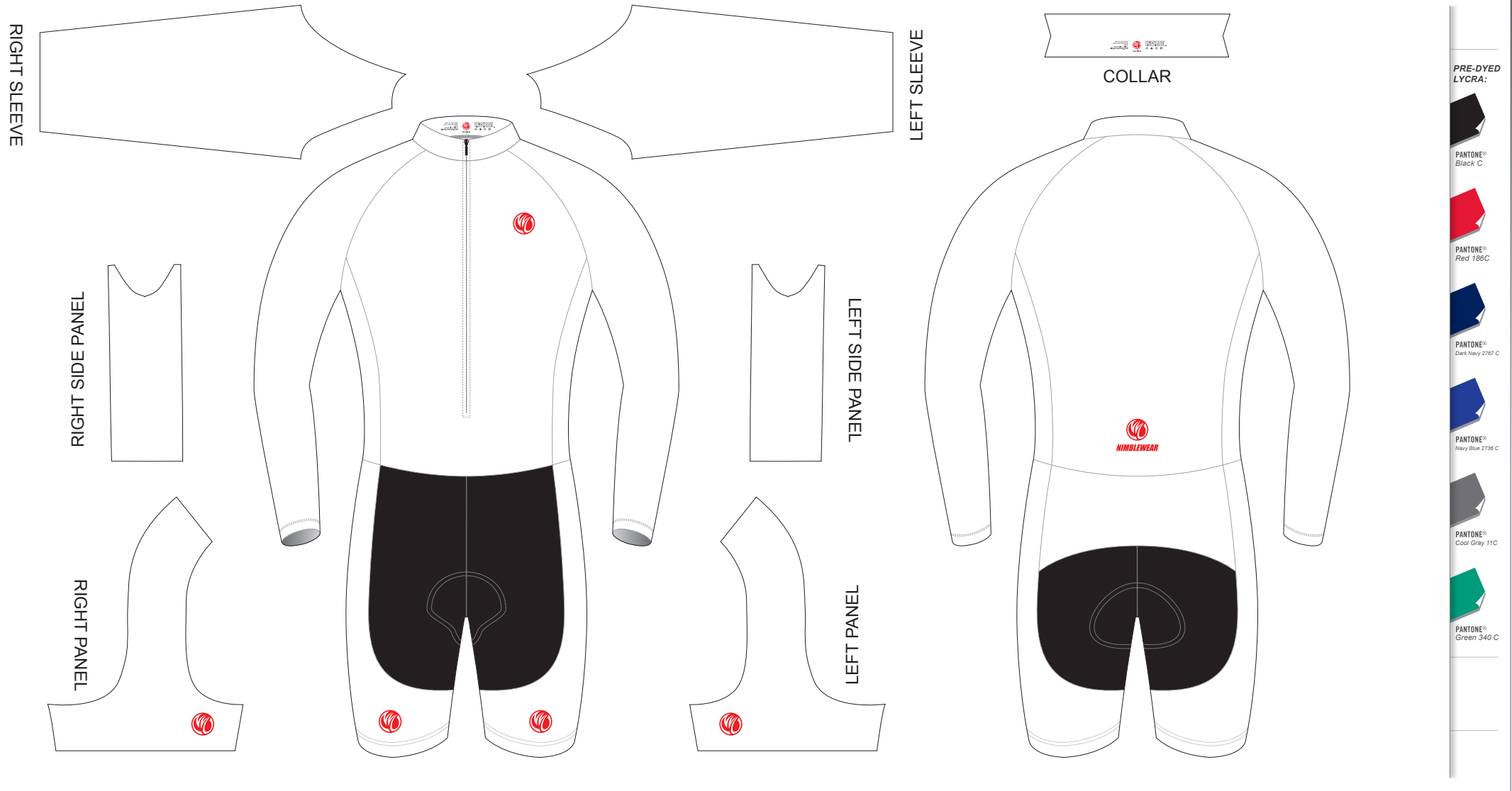
DATE: 00 / 00 / 2013

- This template can be edited with vector graphic software programs. Adobe Illustrator CS5 is recommended.
- All logos must be provided in vector format and all fonts must be converted into outline.
- The color on-screen may vary from the finished product. To confirm the color please refer to PANTONE® MATCHING SYSTEM FORMULA GUIDE Solid Coated.
- We will try the best to match the PANTONE® colors when printing, but exact matching cannot be guaranteed, due to variation in temperature, humidity and materials.

AOA04 Long Sleeve Cycling Skinsuit

T Style; with Collar; with Short Side Panels

www.nimblewear.com
www.nimblewear.net



COLORS USED:



CUSTOMER: _____

DESIGN REQUEST NUMBER: _____

VERSION: 1

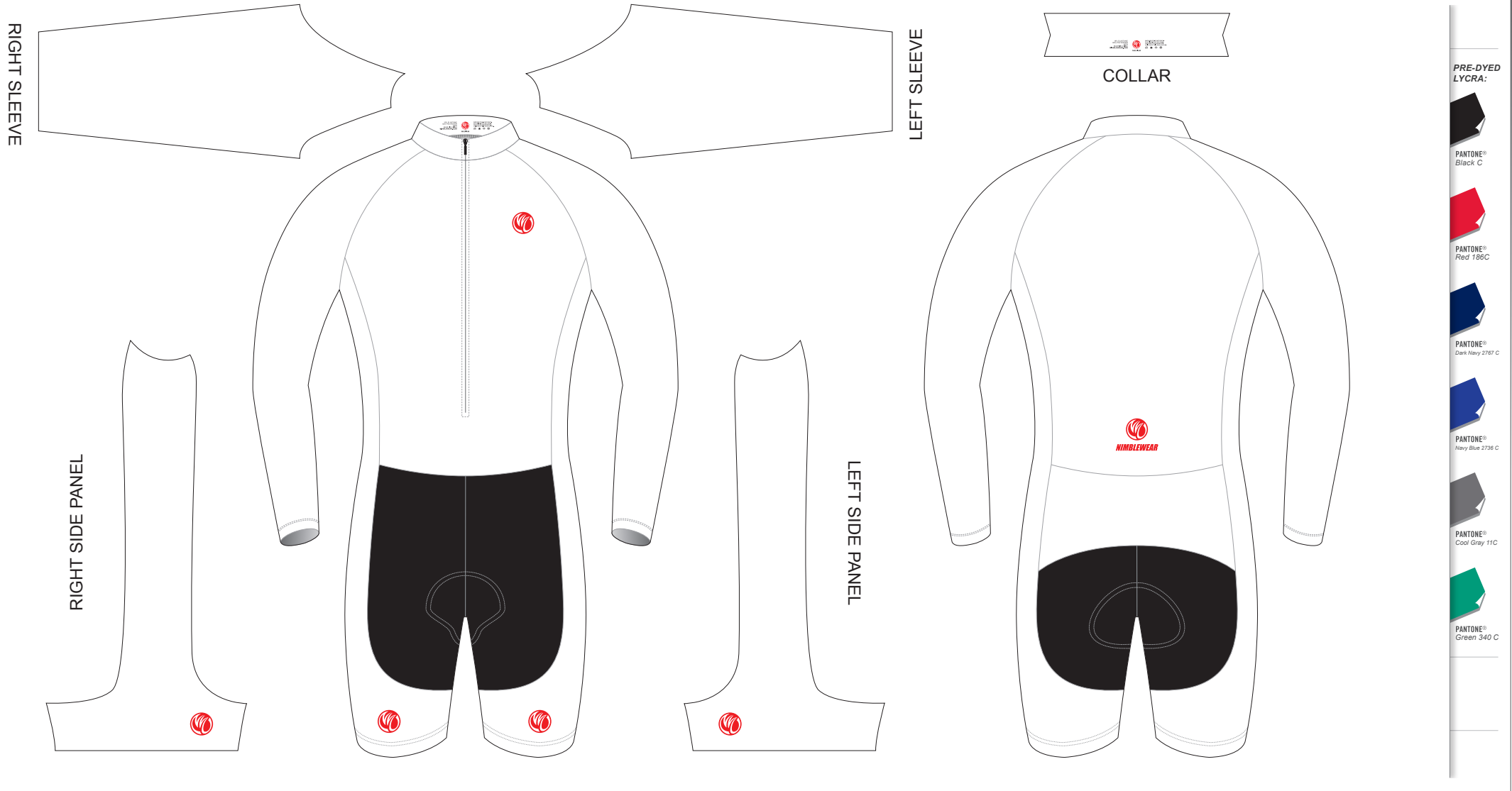
DATE: 00 / 00 / 2013

- This template can be edited with vector graphic software programs. Adobe Illustrator CS5 is recommended.
- All logos must be provided in vector format and all fonts must be converted into outline.
- The color on-screen may vary from the finished product. To confirm the color please refer to PANTONE® MATCHING SYSTEM FORMULA GUIDE Solid Coated.
- We will try the best to match the PANTONE® colors when printing, but exact matching cannot be guaranteed, due to variation in temperature, humidity and materials.

AOA05 Long Sleeve Cycling Skinsuit

T Style; with Collar; with Long Side Panels

www.nimblewear.com
www.nimblewear.net



COLORS USED:



CUSTOMER: _____

DESIGN REQUEST NUMBER: _____

VERSION: 1

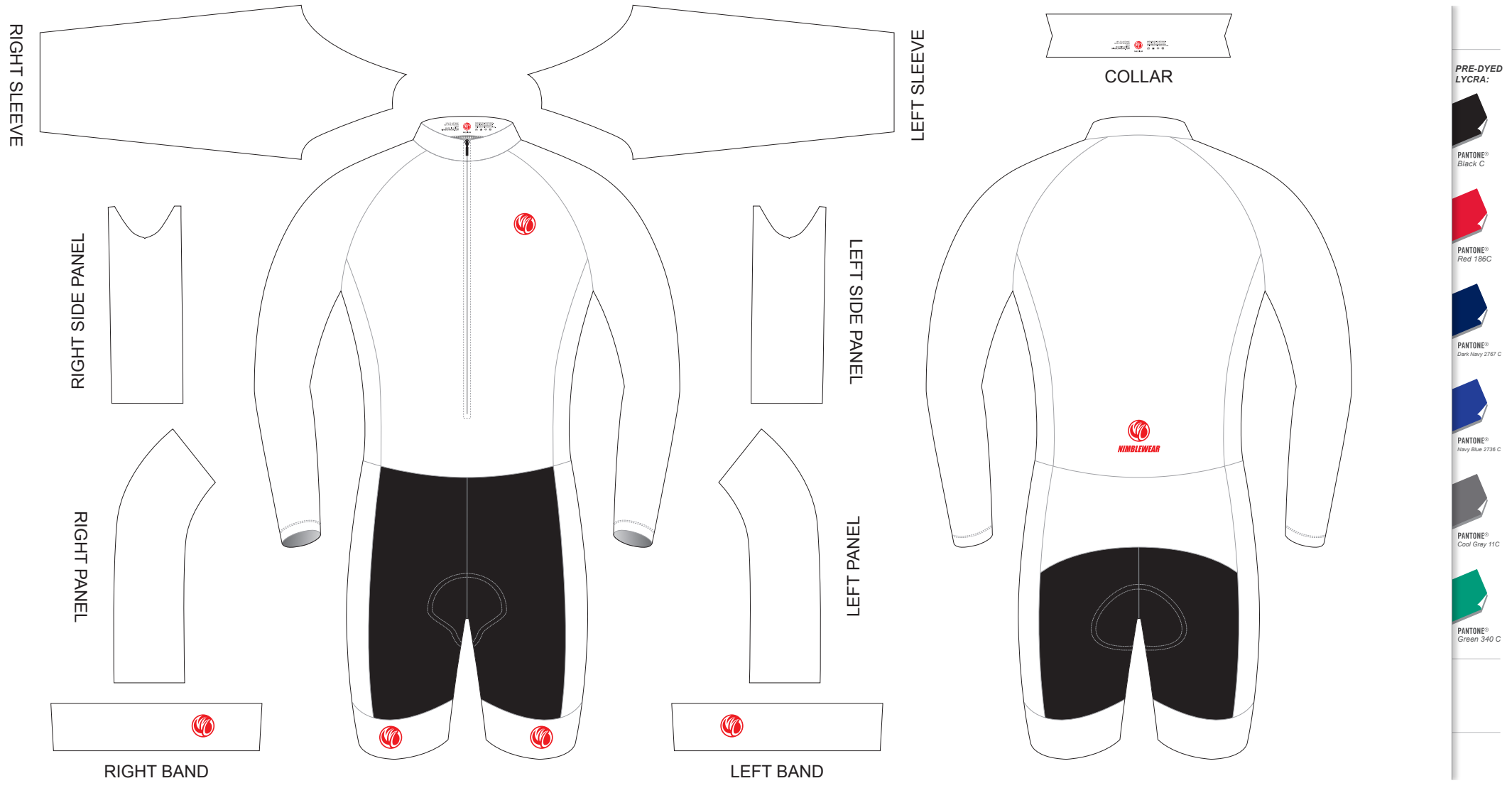
DATE: 00 / 00 / 2013

- This template can be edited with vector graphic software programs. Adobe Illustrator CS5 is recommended.
- All logos must be provided in vector format and all fonts must be converted into outline.
- The color on-screen may vary from the finished product. To confirm the color please refer to PANTONE® MATCHING SYSTEM FORMULA GUIDE Solid Coated.
- We will try the best to match the PANTONE® colors when printing, but exact matching cannot be guaranteed, due to variation in temperature, humidity and materials.

AOA06 Long Sleeve Cycling Skinsuit

Wide Band Style; with Collar; with Short Side Panels

www.nimblewear.com
www.nimblewear.net



COLORS USED:



CUSTOMER: _____

DESIGN REQUEST NUMBER: _____

VERSION: 1

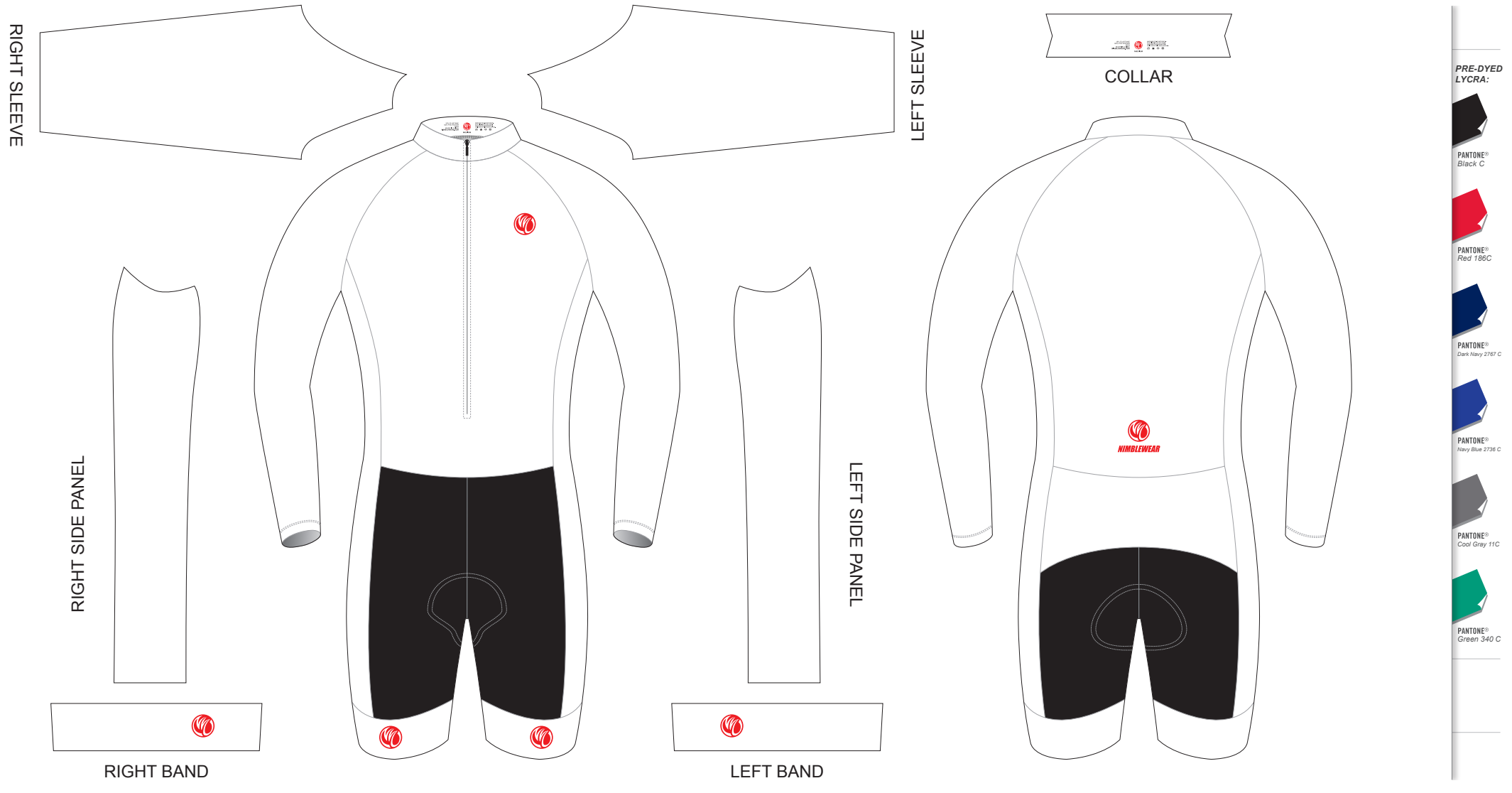
DATE: 00 / 00 / 2013

• This template can be edited with vector graphic software programs. Adobe Illustrator CS5 is recommended.
 • All logos must be provided in vector format and all fonts must be converted into outline.
 • The color on-screen may vary from the finished product. To confirm the color please refer to PANTONE® MATCHING SYSTEM FORMULA GUIDE Solid Coated.
 • We will try the best to match the PANTONE® colors when printing, but exact matching cannot be guaranteed, due to variation in temperature, humidity and materials.

AOA07 Long Sleeve Cycling Skinsuit

Wide Band Style; with Collar; with Long Side Panels

www.nimblewear.com
www.nimblewear.net



COLORS USED:



CUSTOMER: _____

DESIGN REQUEST NUMBER: _____

VERSION: 1

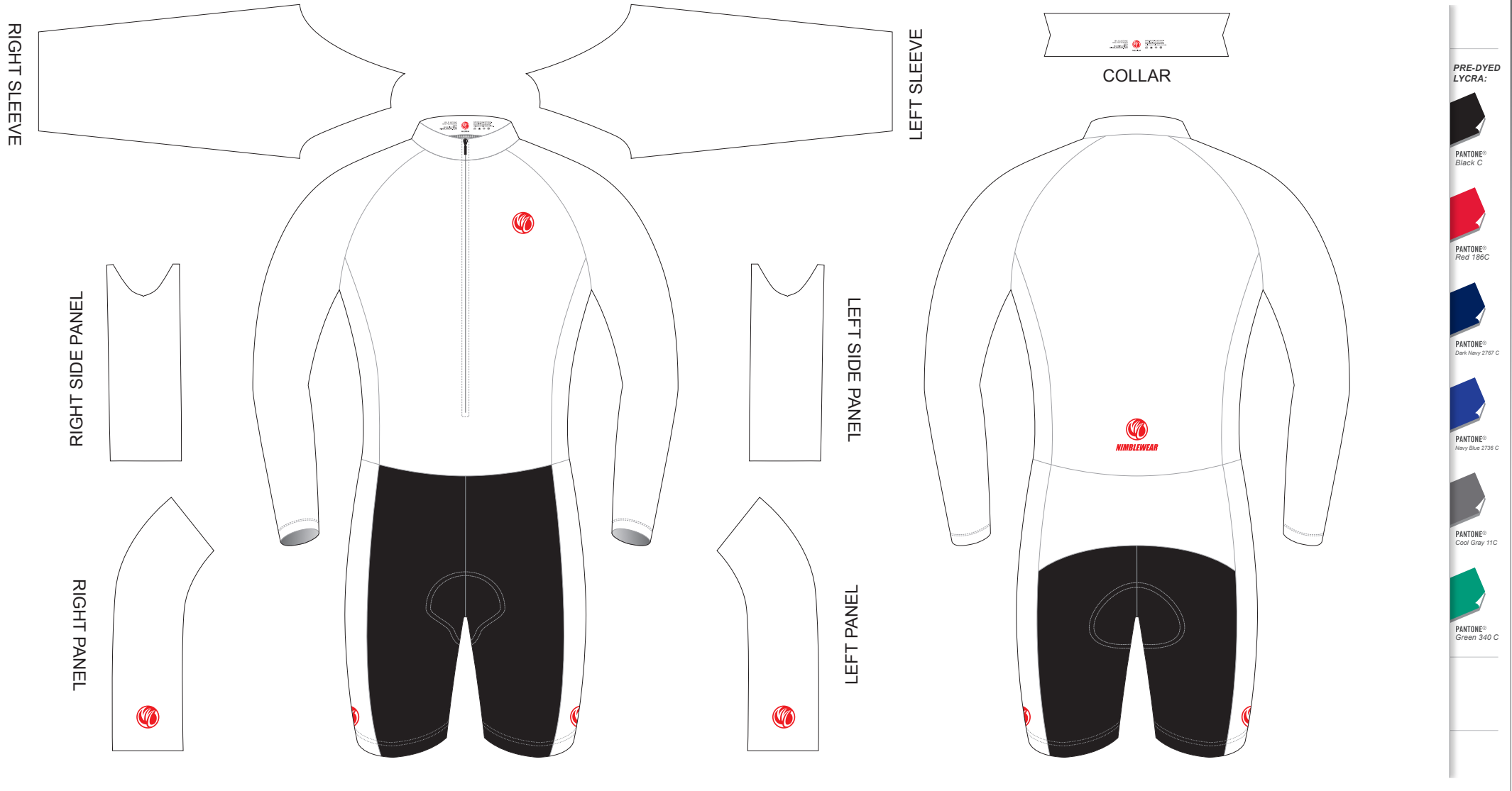
DATE: 00 / 00 / 2013

- This template can be edited with vector graphic software programs. Adobe Illustrator CS5 is recommended.
- All logos must be provided in vector format and all fonts must be converted into outline.
- The color on-screen may vary from the finished product. To confirm the color please refer to PANTONE® MATCHING SYSTEM FORMULA GUIDE Solid Coated.
- We will try the best to match the PANTONE® colors when printing, but exact matching cannot be guaranteed, due to variation in temperature, humidity and materials.

AOA08 Long Sleeve Cycling Skinsuit

C Style; with Collar; with Short Side Panels

www.nimblewear.com
www.nimblewear.net



PRE-DYED LYCRA:

- PANTONE® Black C
- PANTONE® Red 186C
- PANTONE® Dark Navy 2767 C
- PANTONE® Navy Blue 2738 C
- PANTONE® Cool Gray 11C
- PANTONE® Green 340 C

COLORS USED:



CUSTOMER: _____

DESIGN REQUEST NUMBER: _____

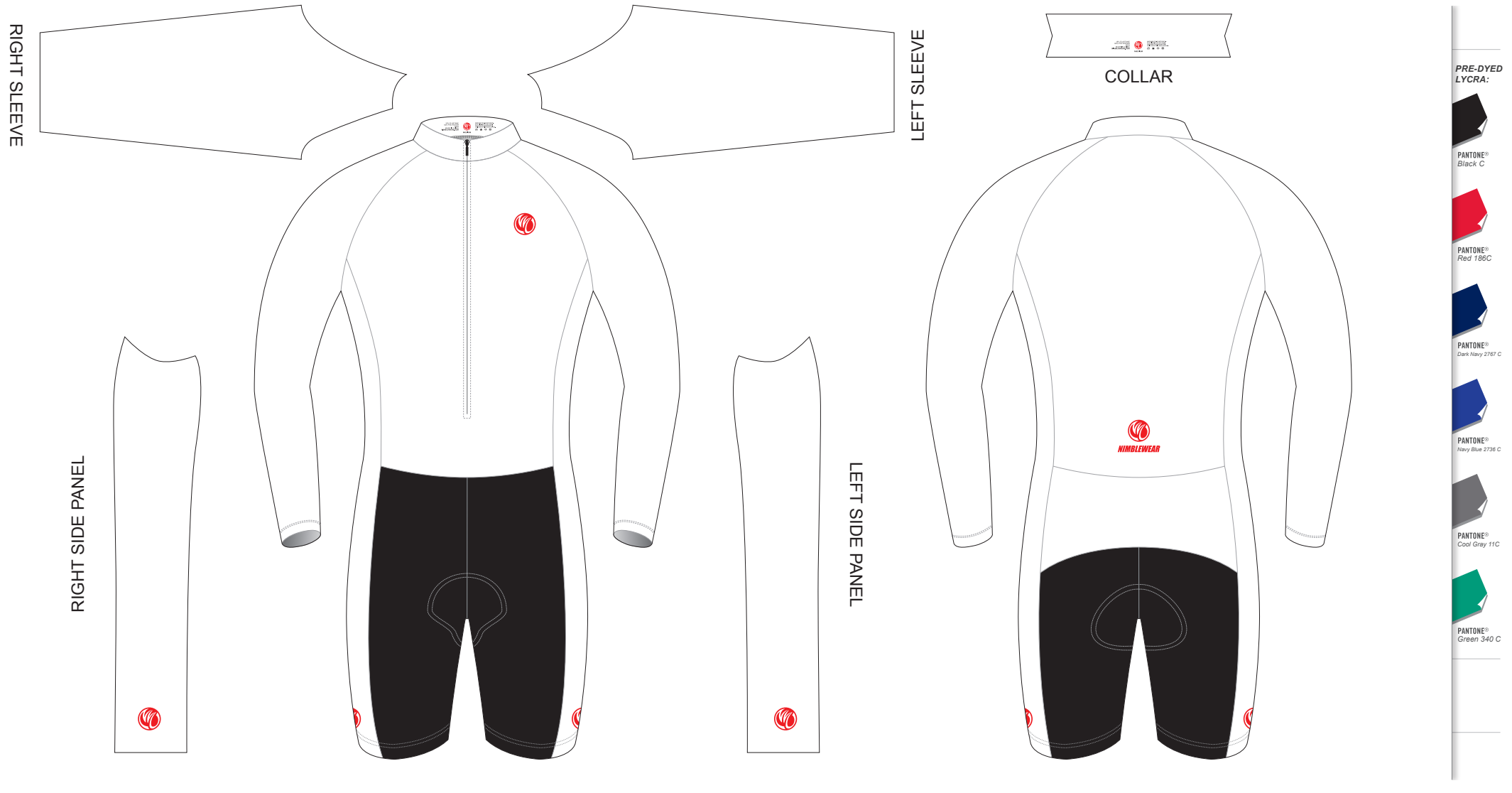
VERSION: 1 **DATE: 00 / 00 / 2013**

- This template can be edited with vector graphic software programs. Adobe Illustrator CS5 is recommended.
- All logos must be provided in vector format and all fonts must be converted into outline.
- The color on-screen may vary from the finished product. To confirm the color please refer to PANTONE® MATCHING SYSTEM FORMULA GUIDE Solid Coated.
- We will try the best to match the PANTONE® colors when printing, but exact matching cannot be guaranteed, due to variation in temperature, humidity and materials.

AOA09 Long Sleeve Cycling Skinsuit

C Style; with Collar; with Long Side Panels

www.nimblewear.com
www.nimblewear.net



PRE-DYED LYCRA:

- PANTONE® Black C
- PANTONE® Red 186C
- PANTONE® Dark Navy 2767 C
- PANTONE® Navy Blue 2736 C
- PANTONE® Cool Gray 11C
- PANTONE® Green 340 C

COLORS USED:



CUSTOMER: _____

DESIGN REQUEST NUMBER: _____

VERSION: 1

DATE: 00 / 00 / 2013

- This template can be edited with vector graphic software programs. Adobe Illustrator CS5 is recommended.
- All logos must be provided in vector format and all fonts must be converted into outline.
- The color on-screen may vary from the finished product. To confirm the color please refer to PANTONE® MATCHING SYSTEM FORMULA GUIDE Solid Coated.
- We will try the best to match the PANTONE® colors when printing, but exact matching cannot be guaranteed, due to variation in temperature, humidity and materials.