

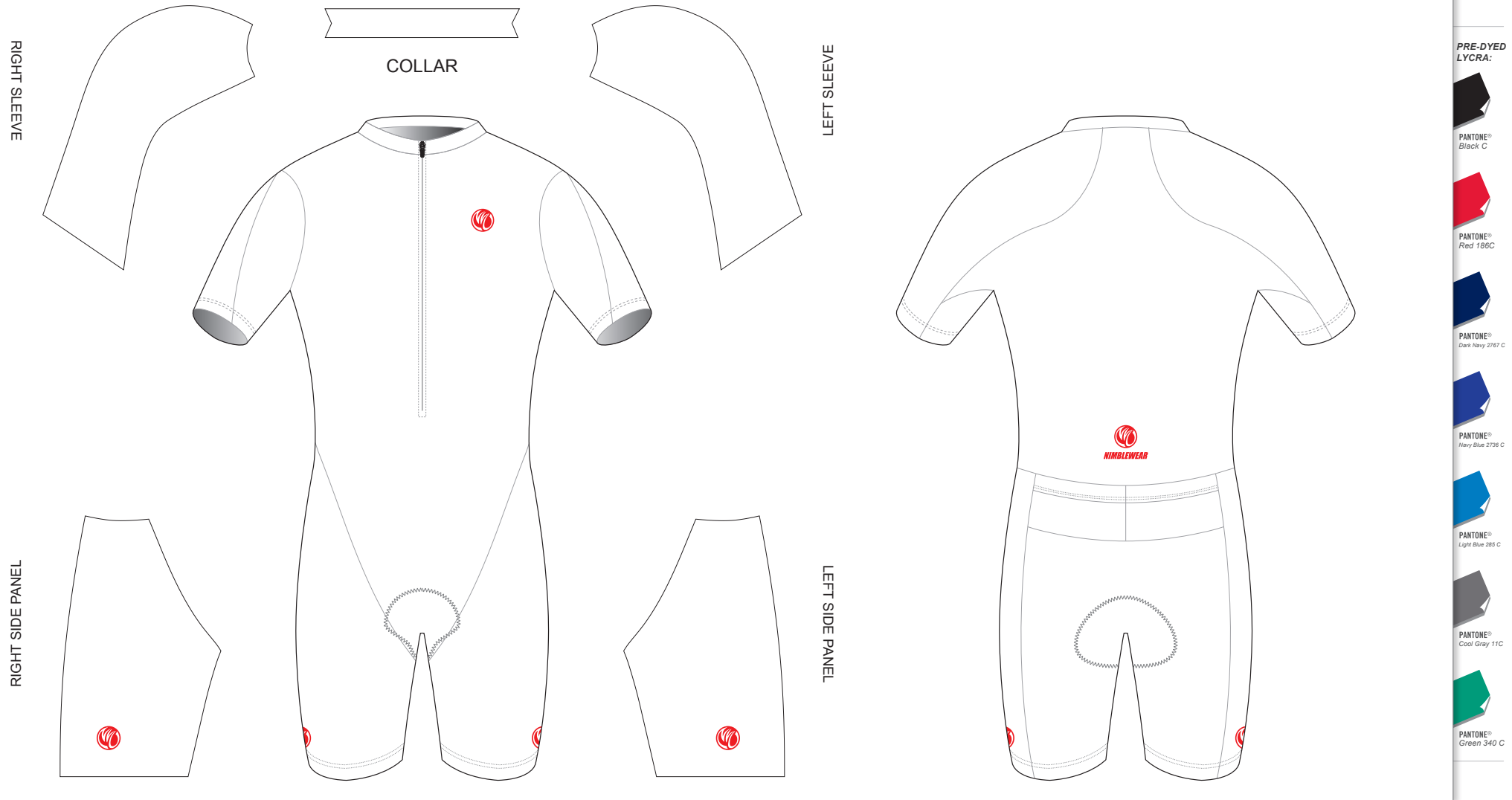
BJ001 Short Sleeve Tri Suit

CUSTOMER: _____ VERSION: 1
 DESIGN REQUEST NUMBER: _____ DATE: 00 / 00 / 2015
 www.nimblewear.com sales@nimblewear.com



SET-IN Sleeve, with Silicon Gripper & Two Rear Pockets

Please note that NIMBLEWEAR logo must appear on the upper chest area (left or right), side panels and at the center of lower back. Rear pockets can be removed upon customer's request.



COLORS USED:



FLATLOCK COLOR OPTIONS:



- This template can be edited with vector graphic software programs. Adobe Illustrator CS5 is recommended.
- All logos must be provided in vector format and all fonts must be converted into outline.
- The color on-screen may vary from the finished product. To confirm the color please refer to PANTONE® MATCHING SYSTEM FORMULA GUIDE Solid Coated.
- We will try the best to match the PANTONE® colors when printing, but exact matching cannot be guaranteed, due to variation in temperature, humidity and materials.

PRE-DYED LYCRA:



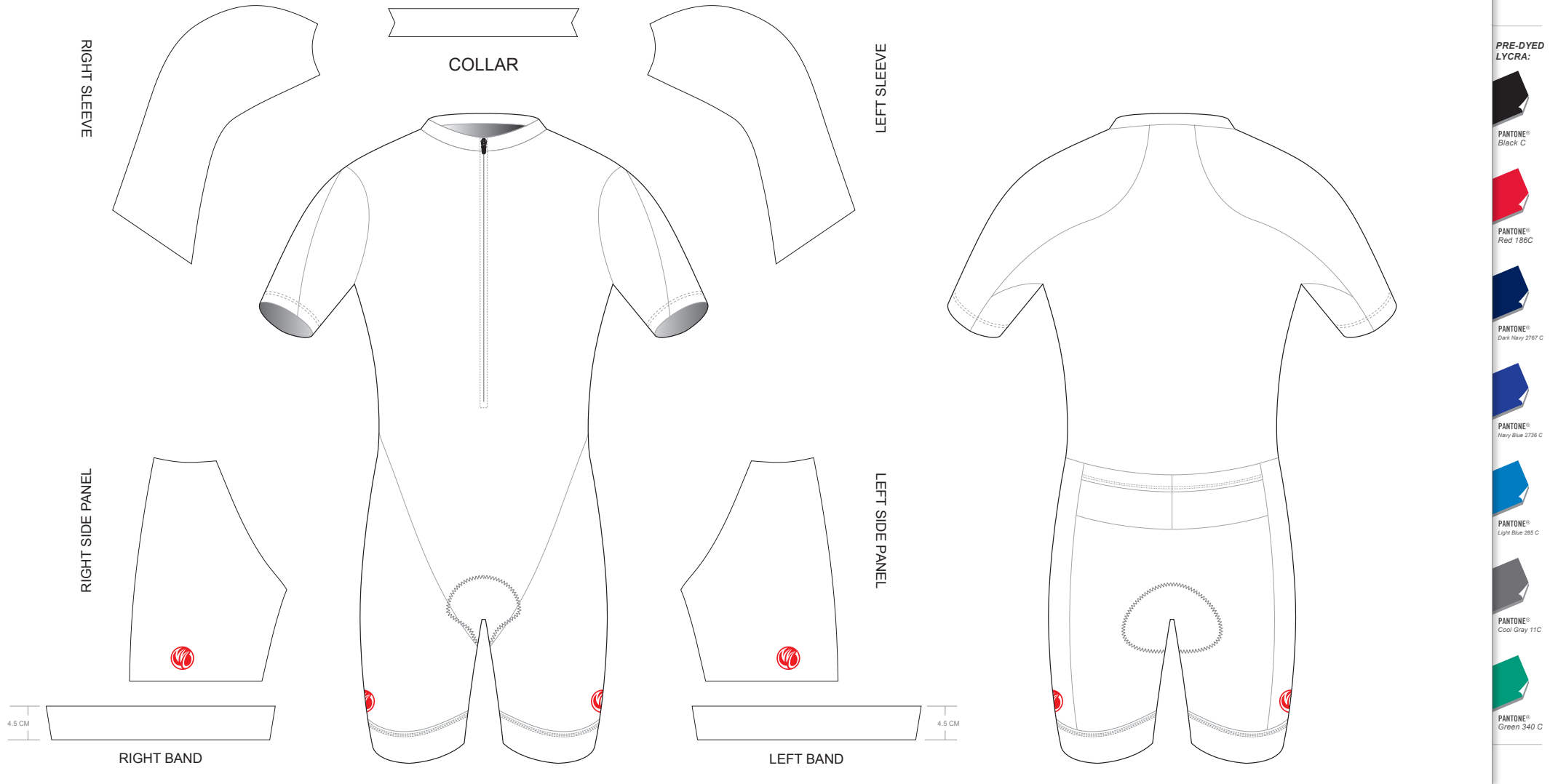
BJ002 Short Sleeve Tri Suit

CUSTOMER: _____ VERSION: 1
 DESIGN REQUEST NUMBER: _____ DATE: 00 / 00 / 2015
 www.nimblewear.com sales@nimblewear.com



SET-IN Sleeve, with 4.5 CM Power Band & Two Rear Pockets

Please note that NIMBLEWEAR logo must appear on the upper chest area (left or right), side panels and at the center of lower back.
 NIMBLEWEAR standard power band for tri suit is 4.5 CM in width. 7.5 CM power band is available upon customer's request. Rear pockets can be removed upon customer's request.



COLORS USED:



FLATLOCK COLOR OPTIONS:



- This template can be edited with vector graphic software programs. Adobe Illustrator CS5 is recommended.
- All logos must be provided in vector format and all fonts must be converted into outline.
- The color on-screen may vary from the finished product. To confirm the color please refer to PANTONE® MATCHING SYSTEM FORMULA GUIDE Solid Coated.
- We will try the best to match the PANTONE® colors when printing, but exact matching cannot be guaranteed, due to variation in temperature, humidity and materials.

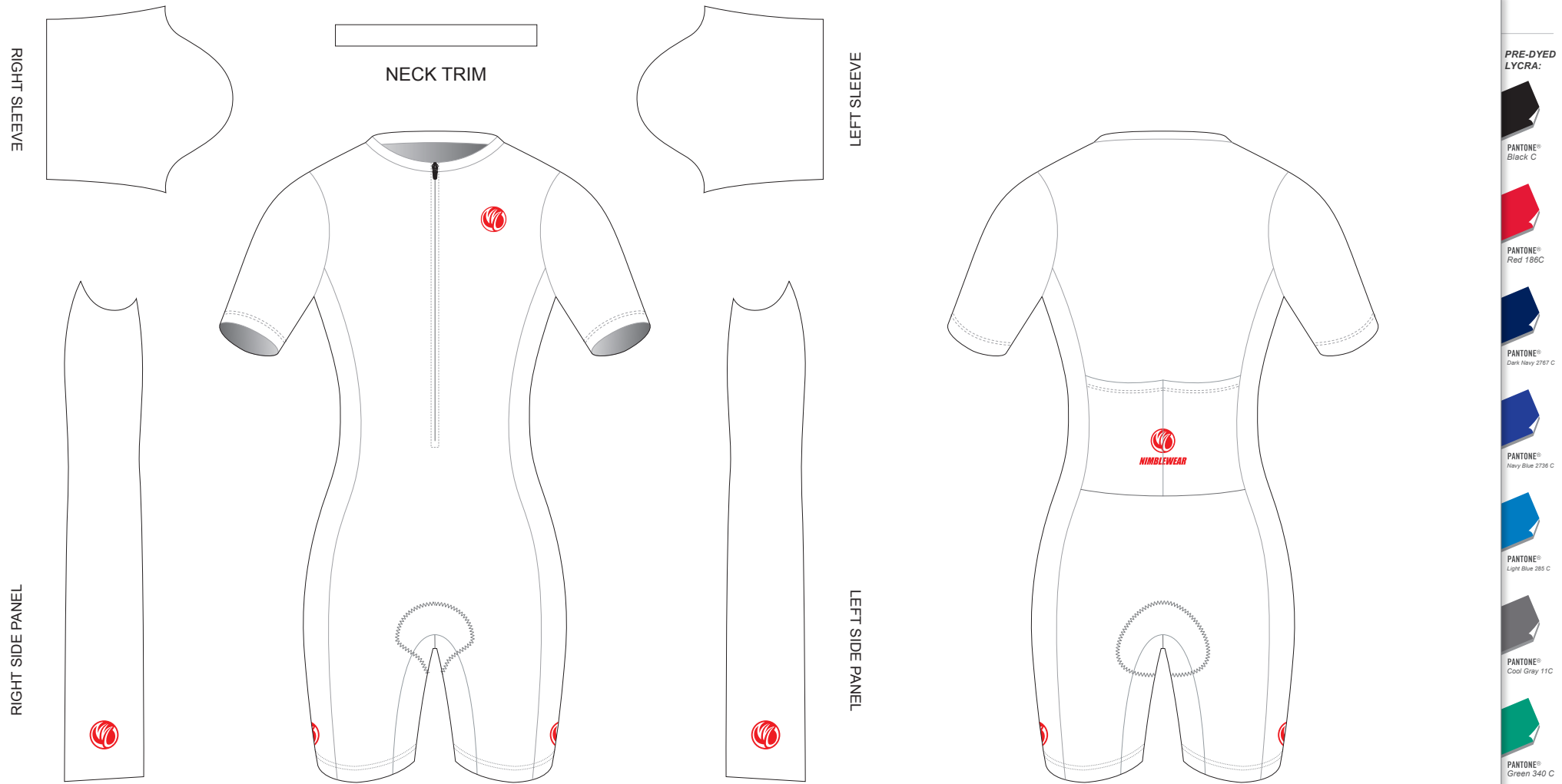
BJ003 Short Sleeve Tri Suit

CUSTOMER: _____ VERSION: 1
 DESIGN REQUEST NUMBER: _____ DATE: 00 / 00 / 2015
 www.nimblewear.com sales@nimblewear.com



SET-IN Sleeve, with Silicon Gripper & Two Rear Pockets, WOMEN

Please note that NIMBLEWEAR logo must appear on the upper chest area (left or right), side panels and at the center of lower back. Rear pockets can be removed upon customer's request.



PRE-DYED LYCRA:



COLORS USED:



FLATLOCK COLOR OPTIONS:



- This template can be edited with vector graphic software programs. Adobe Illustrator CS5 is recommended.
- All logos must be provided in vector format and all fonts must be converted into outline.
- The color on-screen may vary from the finished product. To confirm the color please refer to PANTONE® MATCHING SYSTEM FORMULA GUIDE Solid Coated.
- We will try the best to match the PANTONE® colors when printing, but exact matching cannot be guaranteed, due to variation in temperature, humidity and materials.

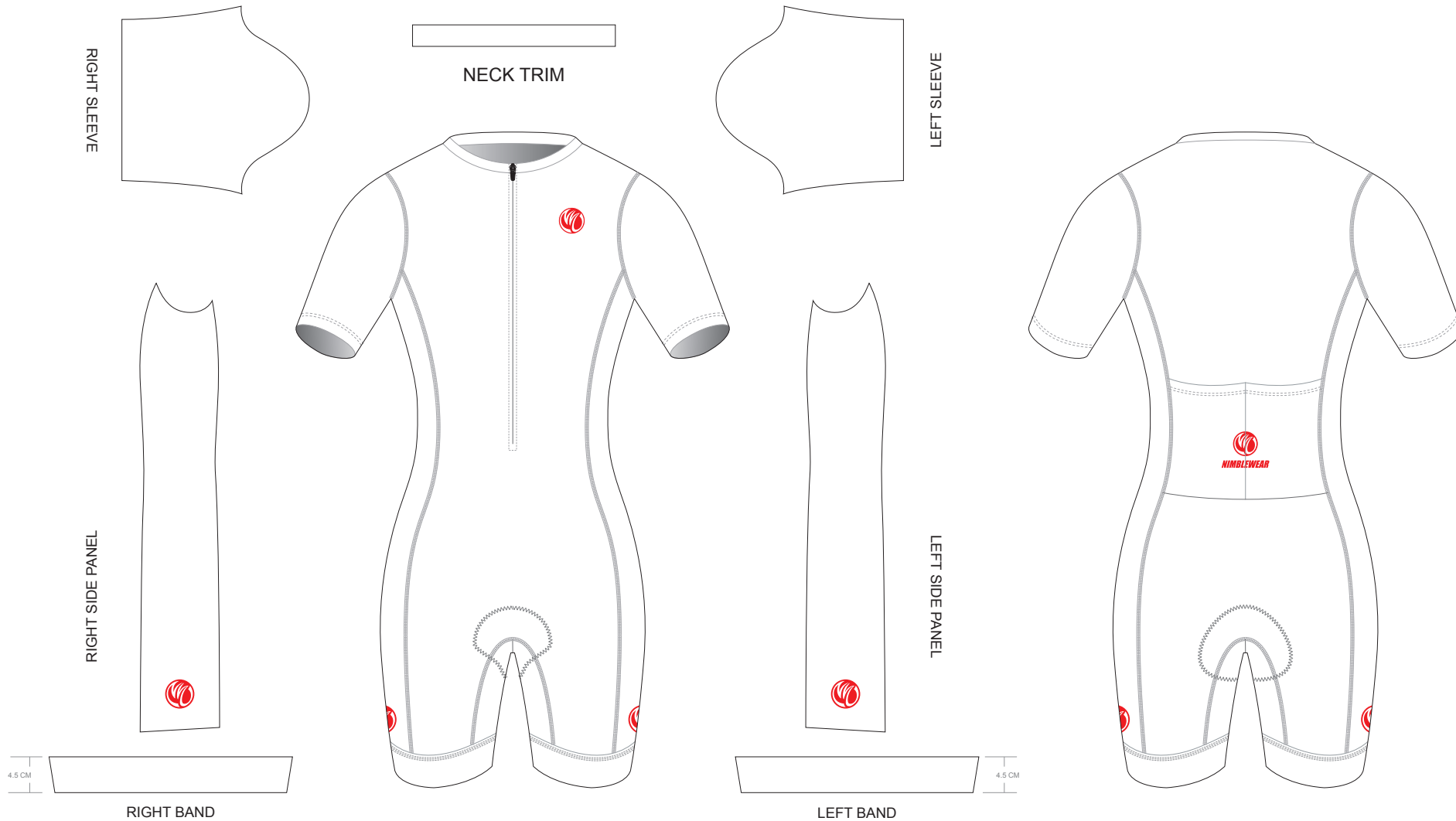
BJ004 Short Sleeve Tri Suit

CUSTOMER: _____ VERSION: 1
 DESIGN REQUEST NUMBER: _____ DATE: 00 / 00 / 2015
 www.nimblewear.com sales@nimblewear.com



SET-IN Sleeve, with 4.5 CM Power Band & Two Rear Pockets, WOMEN

Please note that NIMBLEWEAR logo must appear on the upper chest area (left or right), side panels and at the center of lower back. NIMBLEWEAR standard power band for tri suit is 4.5 CM in width. 7.5 CM power band is available upon customer's request. Rear pockets can be removed upon customer's request.



PRE-DYED LYCRA:



COLORS USED:



FLATLOCK COLOR OPTIONS:



- This template can be edited with vector graphic software programs. Adobe Illustrator CS5 is recommended.
- All logos must be provided in vector format and all fonts must be converted into outline.
- The color on-screen may vary from the finished product. To confirm the color please refer to PANTONE® MATCHING SYSTEM FORMULA GUIDE Solid Coated.
- We will try the best to match the PANTONE® colors when printing, but exact matching cannot be guaranteed, due to variation in temperature, humidity and materials.