

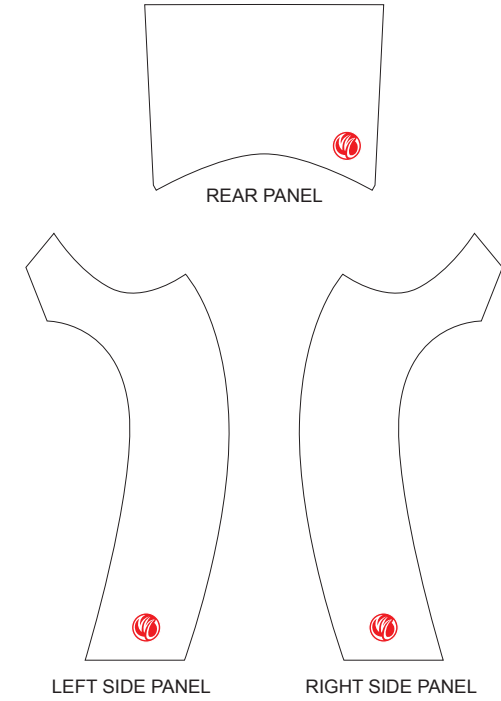
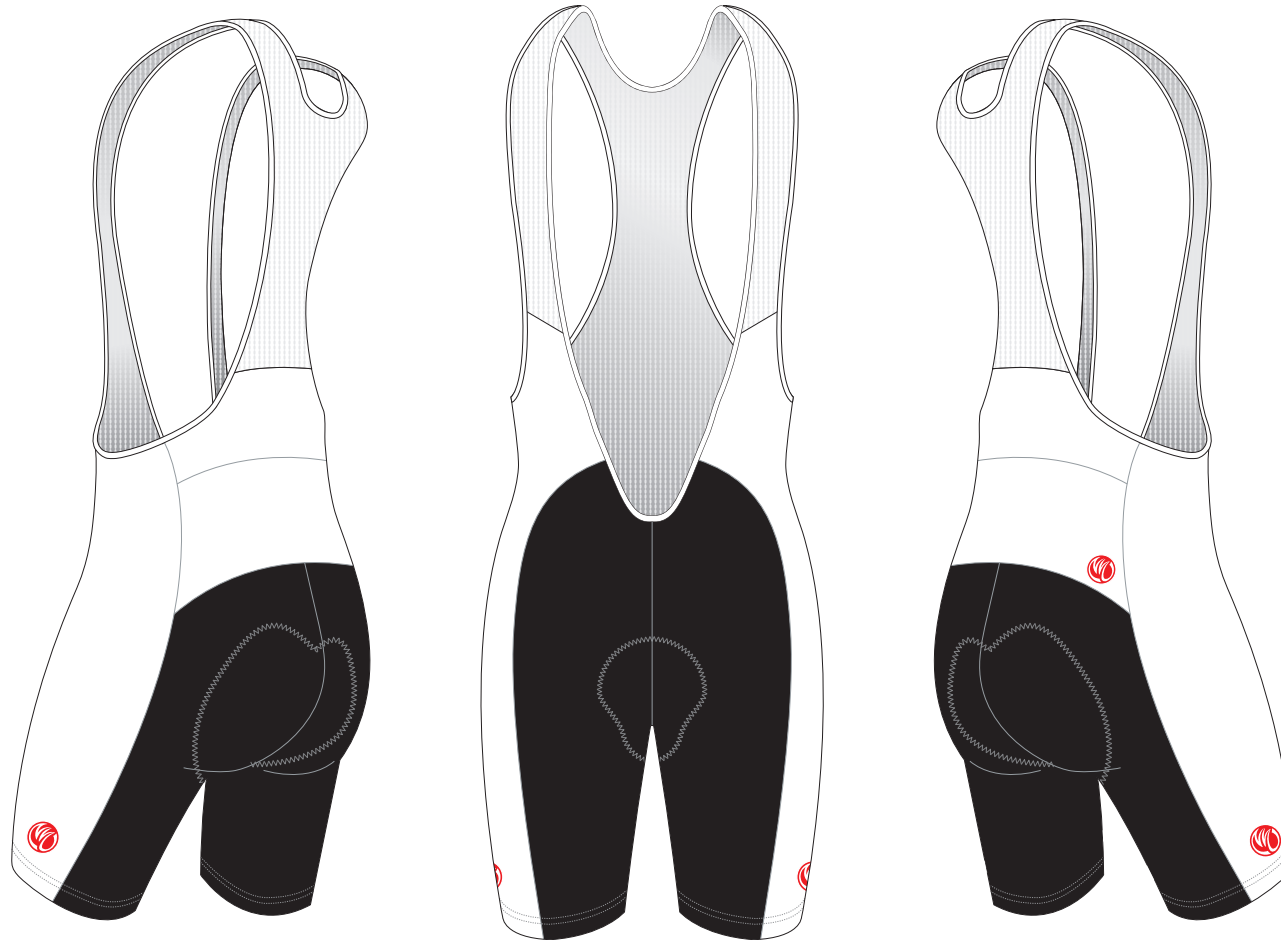
TAH01A 1/2 Cycling Bib Shorts

PELTON, With Silicon Gripper

CUSTOMER: _____ VERSION: 1
 DESIGN REQUEST NUMBER: _____ DATE: 00 / 00 / 2014
 www.nimblewear.com sales@nimblewear.com



Please note that NIMBLEWEAR logo must appear on the side panels and on the back panel for all the bottoms.



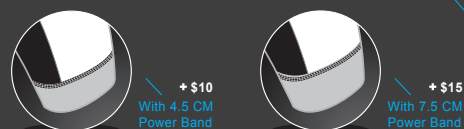
PRE-DYED LYCRA:

-  PANTONE® Black C
-  PANTONE® Red 186C
-  PANTONE® Dark Navy 2767 C
-  PANTONE® Navy Blue 2735 C
-  PANTONE® Light Blue 285 C
-  PANTONE® Cool Grey 11C
-  PANTONE® Green 340 C

COLORS USED:



OTHER OPTIONS FOR LEG HEM:



FLATLOCK COLOR OPTIONS:



* This template can be edited with vector graphic software programs. Adobe Illustrator CS5 is recommended.
 * All logos must be provided in vector format and all fonts must be converted into outline.
 * The color on-screen may vary from the finished product. To confirm the color please refer to PANTONE® MATCHING SYSTEM FORMULA GUIDE Solid Coated.
 * We will try the best to match the PANTONE® colors when printing, but exact matching cannot be guaranteed, due to variation in temperature, humidity and materials.

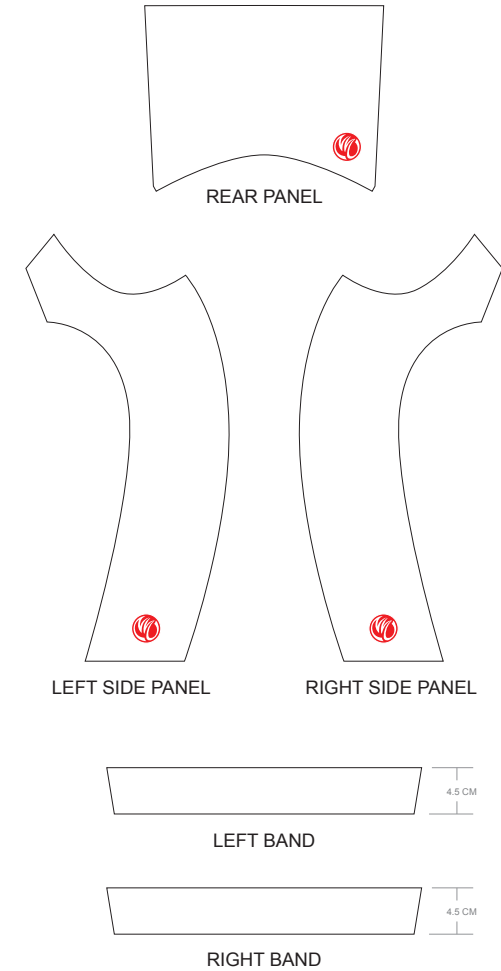
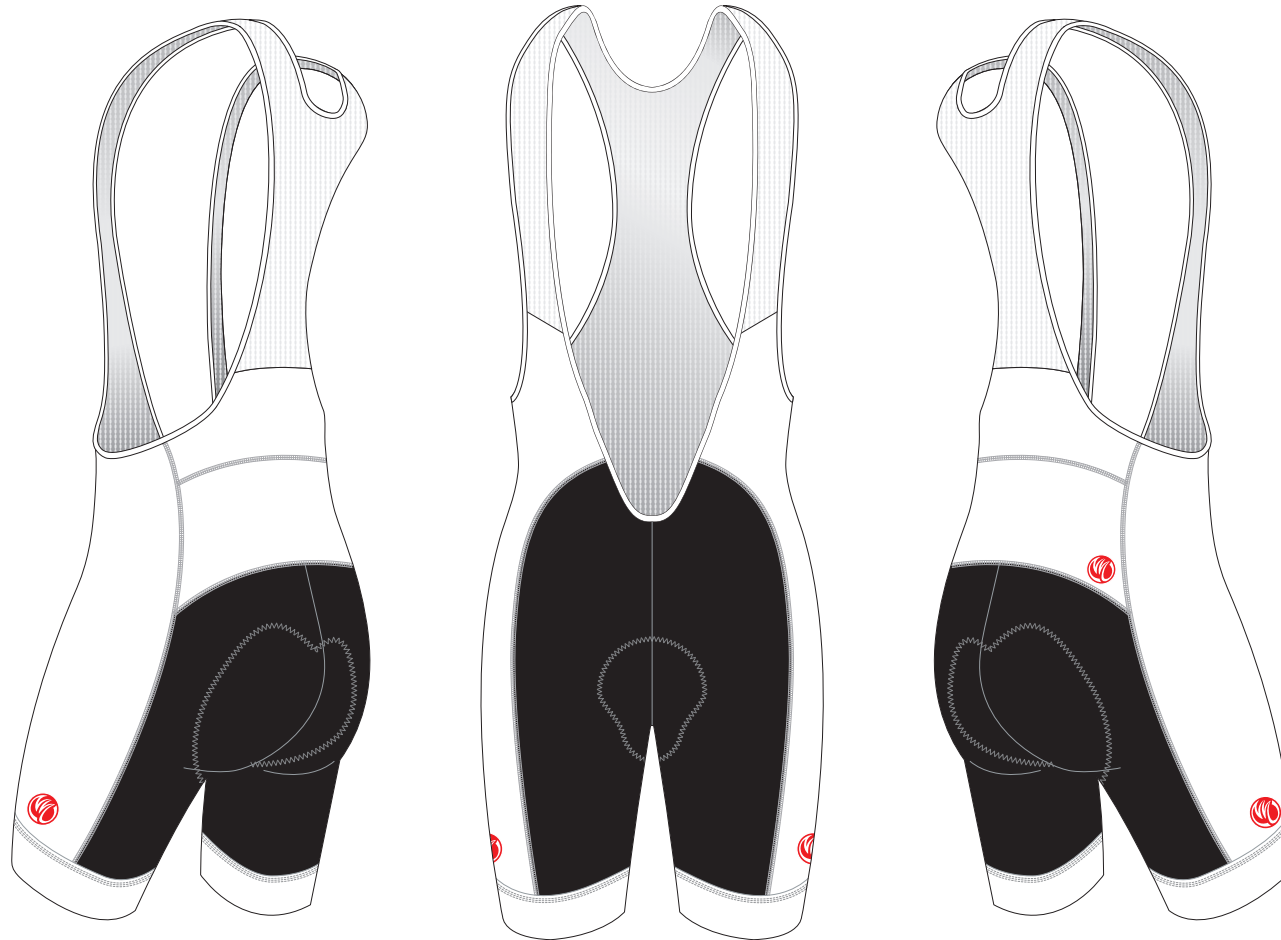
TAH02A 1/2 Cycling Bib Shorts

PELTON, with 4.5 CM Power Band

CUSTOMER: _____ VERSION: 1
 DESIGN REQUEST NUMBER: _____ DATE: 00 / 00 / 2014
 www.nimblewear.com sales@nimblewear.com



Please note that NIMBLEWEAR logo must appear on the side panels and on the back panel for all the bottoms. NIMBLEWEAR standard power band for bib shorts is 4.5 CM in width. 7.5 CM power band is available upon customer's request.



PRE-DYED LYCRA:



COLORS USED:



OTHER OPTIONS FOR LEG HEM:



FLATLOCK COLOR OPTIONS:



* This template can be edited with vector graphic software programs. Adobe Illustrator CS5 is recommended.
 * All logos must be provided in vector format and all fonts must be converted into outline.
 * The color on-screen may vary from the finished product. To confirm the color please refer to PANTONE® MATCHING SYSTEM FORMULA GUIDE Solid Coated.
 * We will try the best to match the PANTONE® colors when printing, but exact matching cannot be guaranteed, due to variation in temperature, humidity and materials.

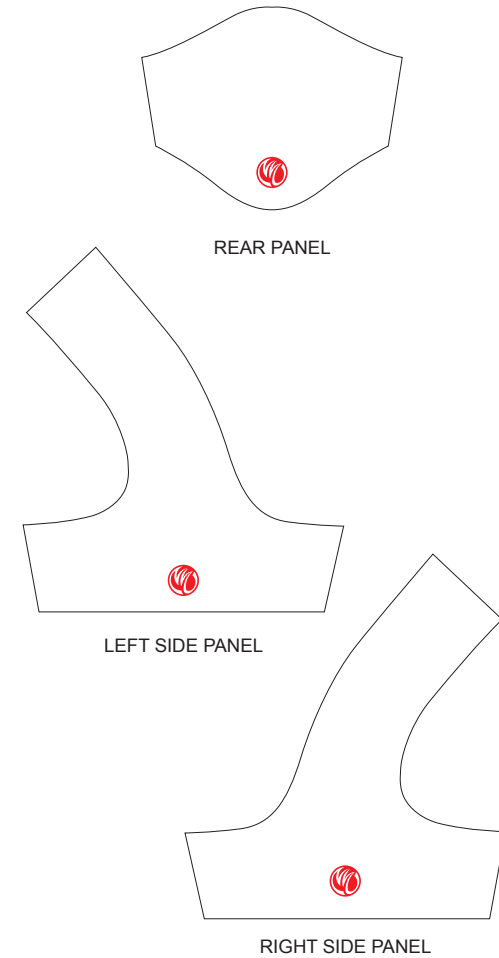
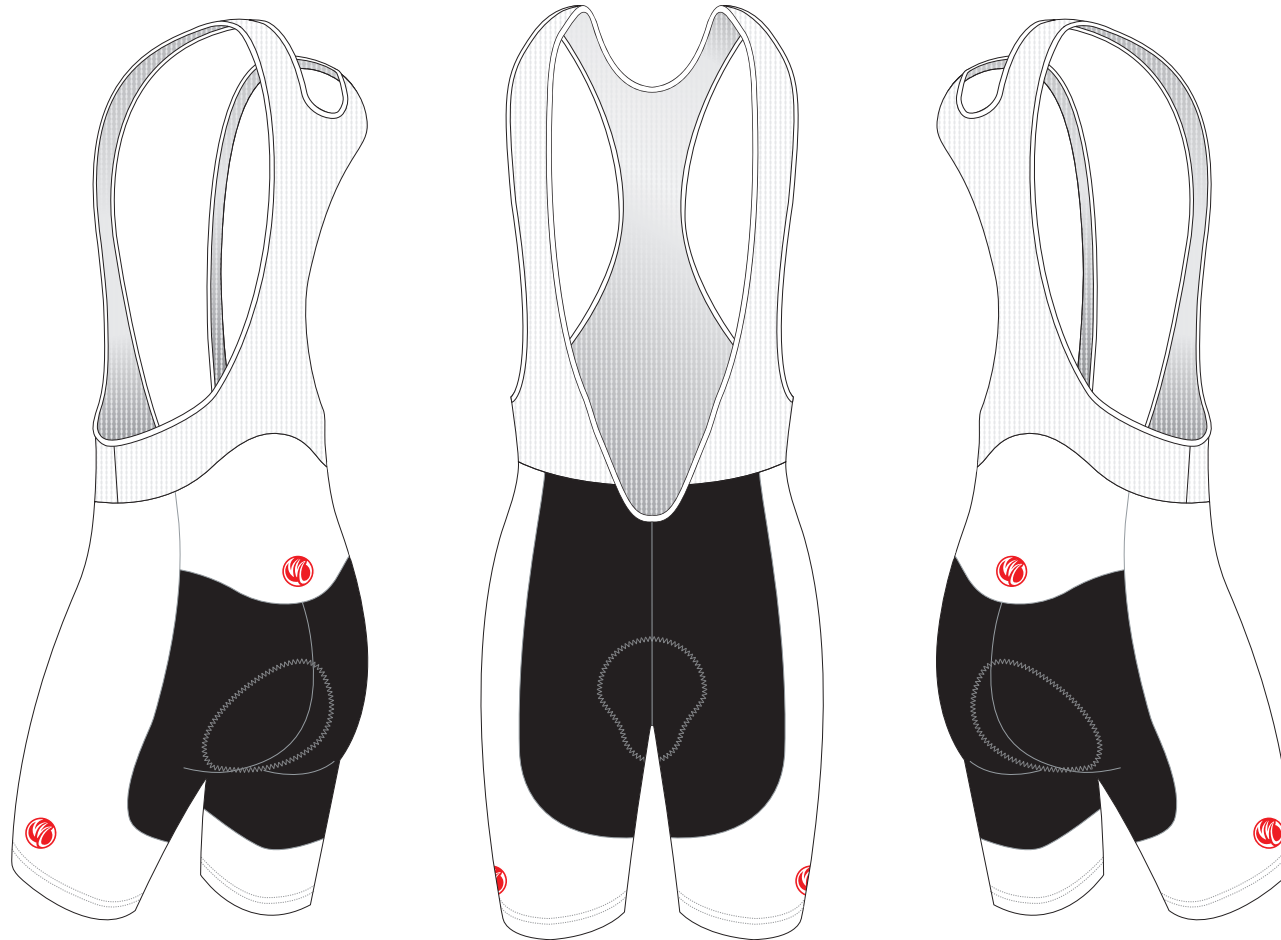
TAH03A 1/2 Cycling Bib Shorts

SUMMIT, T Style, with Silicon Gripper

CUSTOMER: _____ VERSION: 1
 DESIGN REQUEST NUMBER: _____ DATE: 00 / 00 / 2014
 www.nimblewear.com sales@nimblewear.com



Please note that NIMBLEWEAR logo must appear on the side panels and on the back panel for all the bottoms.



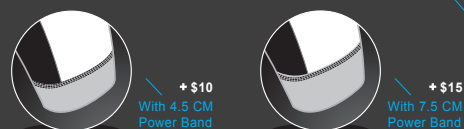
PRE-DYED LYCRA:



COLORS USED:



OTHER OPTIONS FOR LEG HEM:



FLATLOCK COLOR OPTIONS:



* This template can be edited with vector graphic software programs. Adobe Illustrator CS5 is recommended.
 * All logos must be provided in vector format and all fonts must be converted into outline.
 * The color on-screen may vary from the finished product. To confirm the color please refer to PANTONE® MATCHING SYSTEM FORMULA GUIDE Solid Coated.
 * We will try the best to match the PANTONE® colors when printing, but exact matching cannot be guaranteed, due to variation in temperature, humidity and materials.

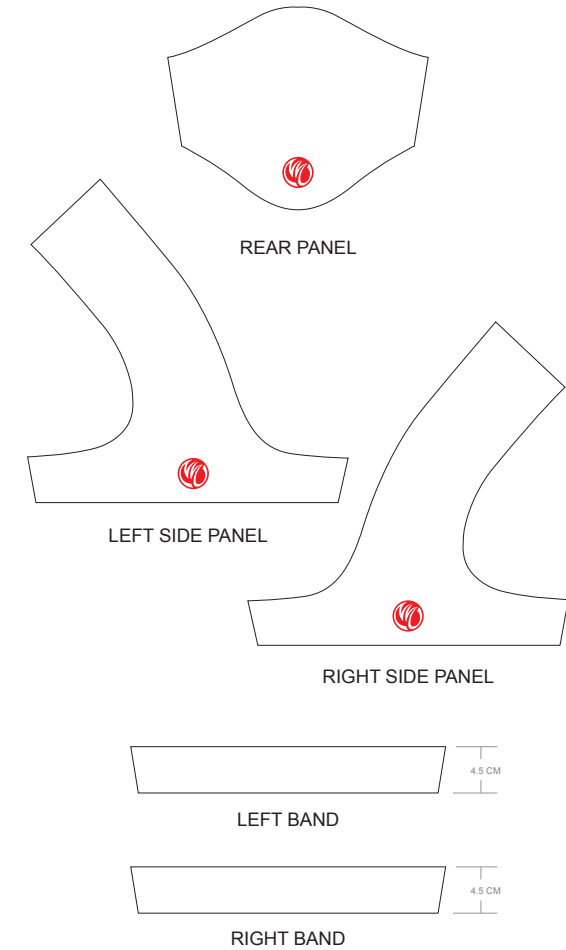
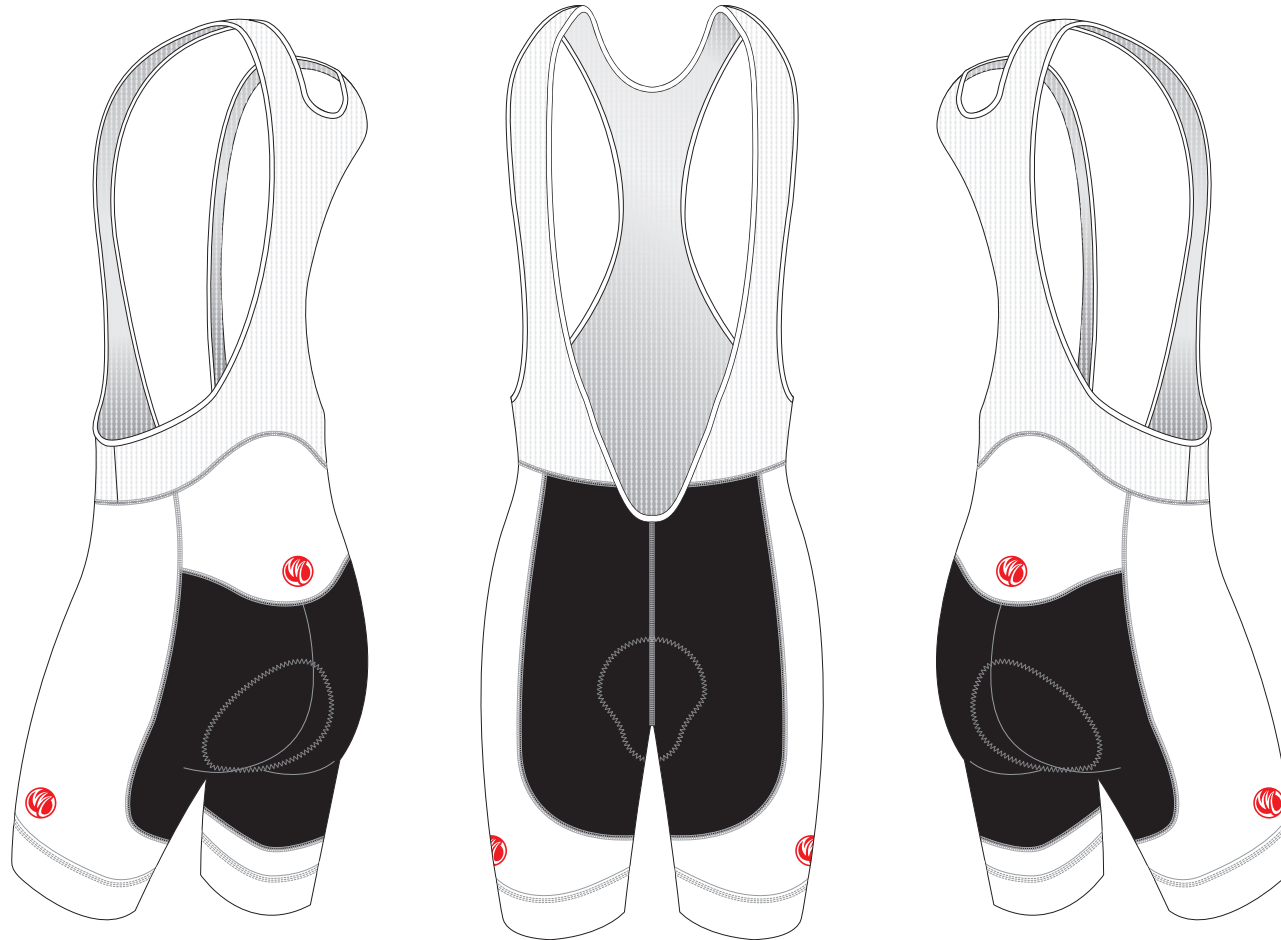
TAH04A 1/2 Cycling Bib Shorts

SUMMIT, T Style, with 4.5 CM Power Band

CUSTOMER: _____ VERSION: 1
 DESIGN REQUEST NUMBER: _____ DATE: 00 / 00 / 2014
 www.nimblewear.com sales@nimblewear.com



Please note that NIMBLEWEAR logo must appear on the side panels and on the back panel for all the bottoms. NIMBLEWEAR standard power band for bib shorts is 4.5 CM in width. 7.5 CM power band is available upon customer's request.



PRE-DYED LYCRA:



COLORS USED:



OTHER OPTIONS FOR LEG HEM:



FLATLOCK COLOR OPTIONS:



* This template can be edited with vector graphic software programs. Adobe Illustrator CS5 is recommended.
 * All logos must be provided in vector format and all fonts must be converted into outline.
 * The color on-screen may vary from the finished product. To confirm the color please refer to PANTONE® MATCHING SYSTEM FORMULA GUIDE Solid Coated.
 * We will try the best to match the PANTONE® colors when printing, but exact matching cannot be guaranteed, due to variation in temperature, humidity and materials.

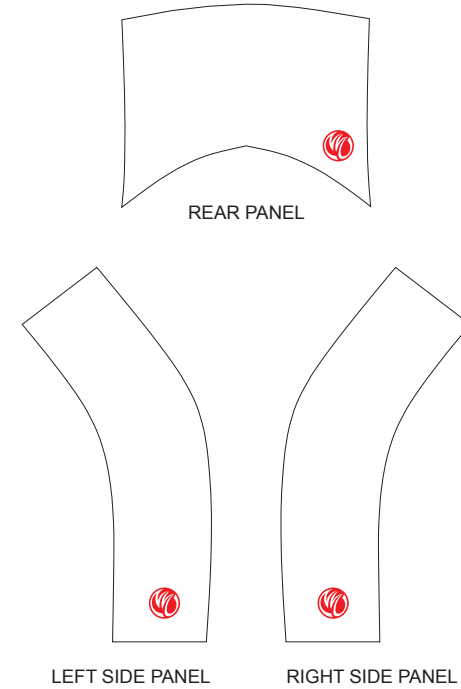
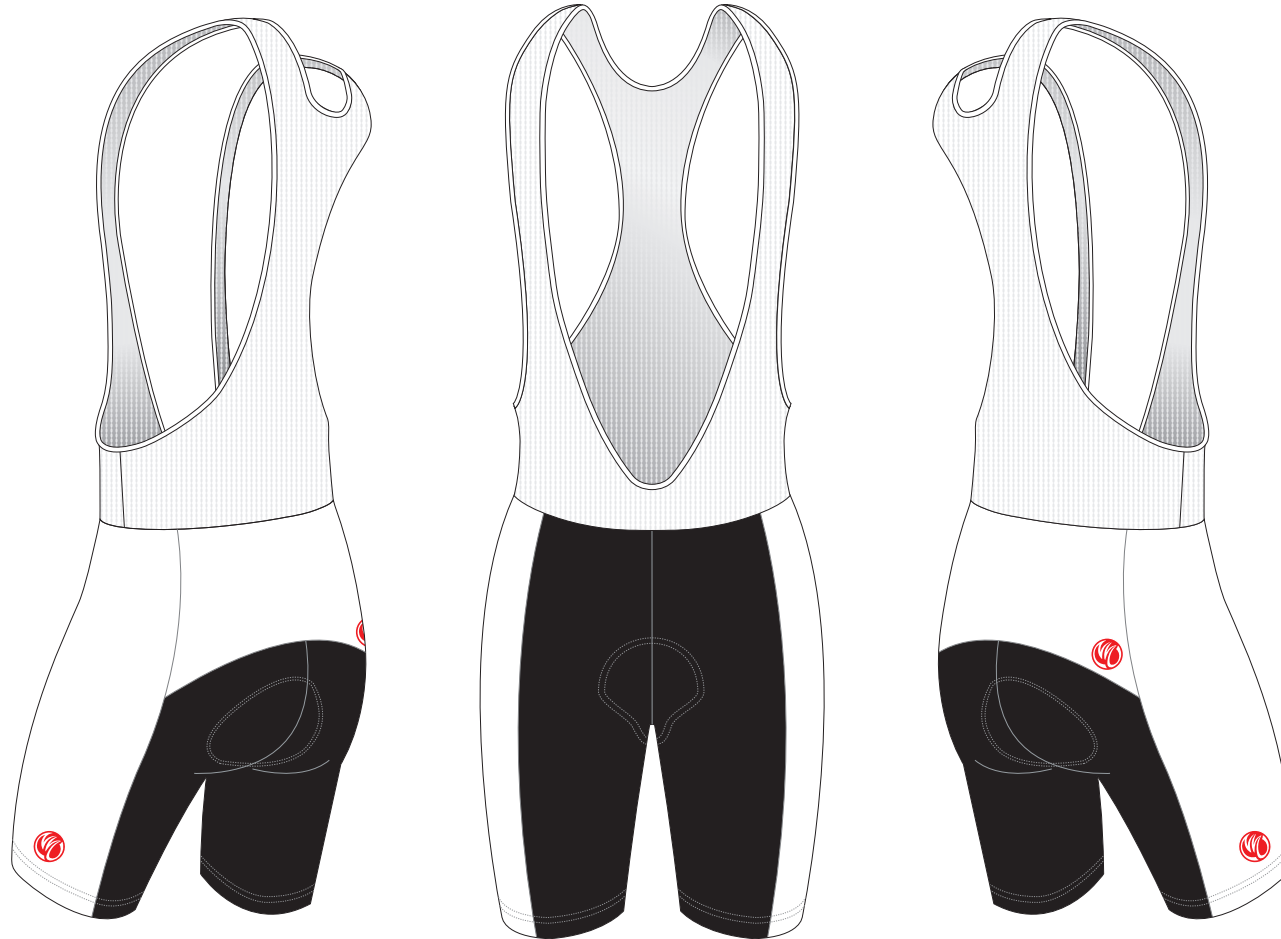
TAH05A 1/2 Cycling Bib Shorts

C Style, with Silicon Gripper

CUSTOMER: _____ VERSION: 1
 DESIGN REQUEST NUMBER: _____ DATE: 00 / 00 / 2014
 www.nimblewear.com sales@nimblewear.com



Please note that NIMBLEWEAR logo must appear on the side panels and on the back panel for all the bottoms.



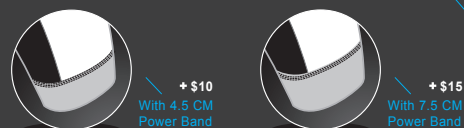
PRE-DYED LYCRA:



COLORS USED:



OTHER OPTIONS FOR LEG HEM:



FLATLOCK COLOR OPTIONS:



* This template can be edited with vector graphic software programs. Adobe Illustrator CS5 is recommended.
 * All logos must be provided in vector format and all fonts must be converted into outline.
 * The color on-screen may vary from the finished product. To confirm the color please refer to PANTONE® MATCHING SYSTEM FORMULA GUIDE Solid Coated.
 * We will try the best to match the PANTONE® colors when printing, but exact matching cannot be guaranteed, due to variation in temperature, humidity and materials.

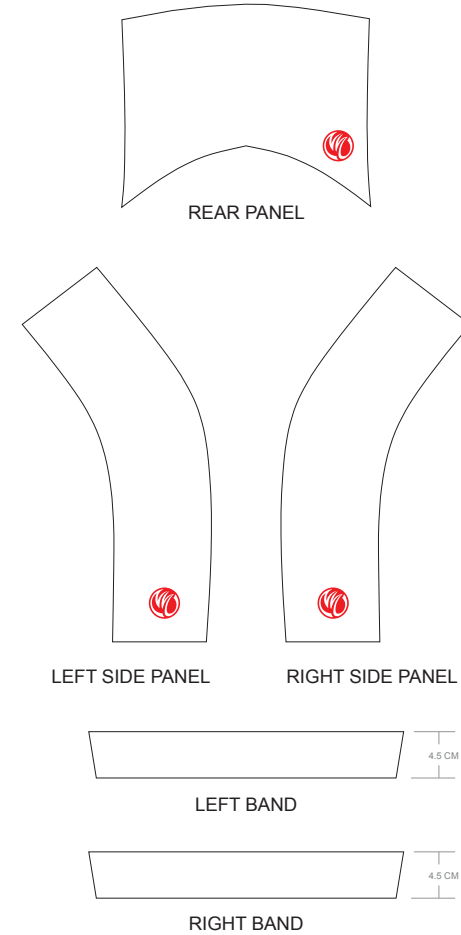
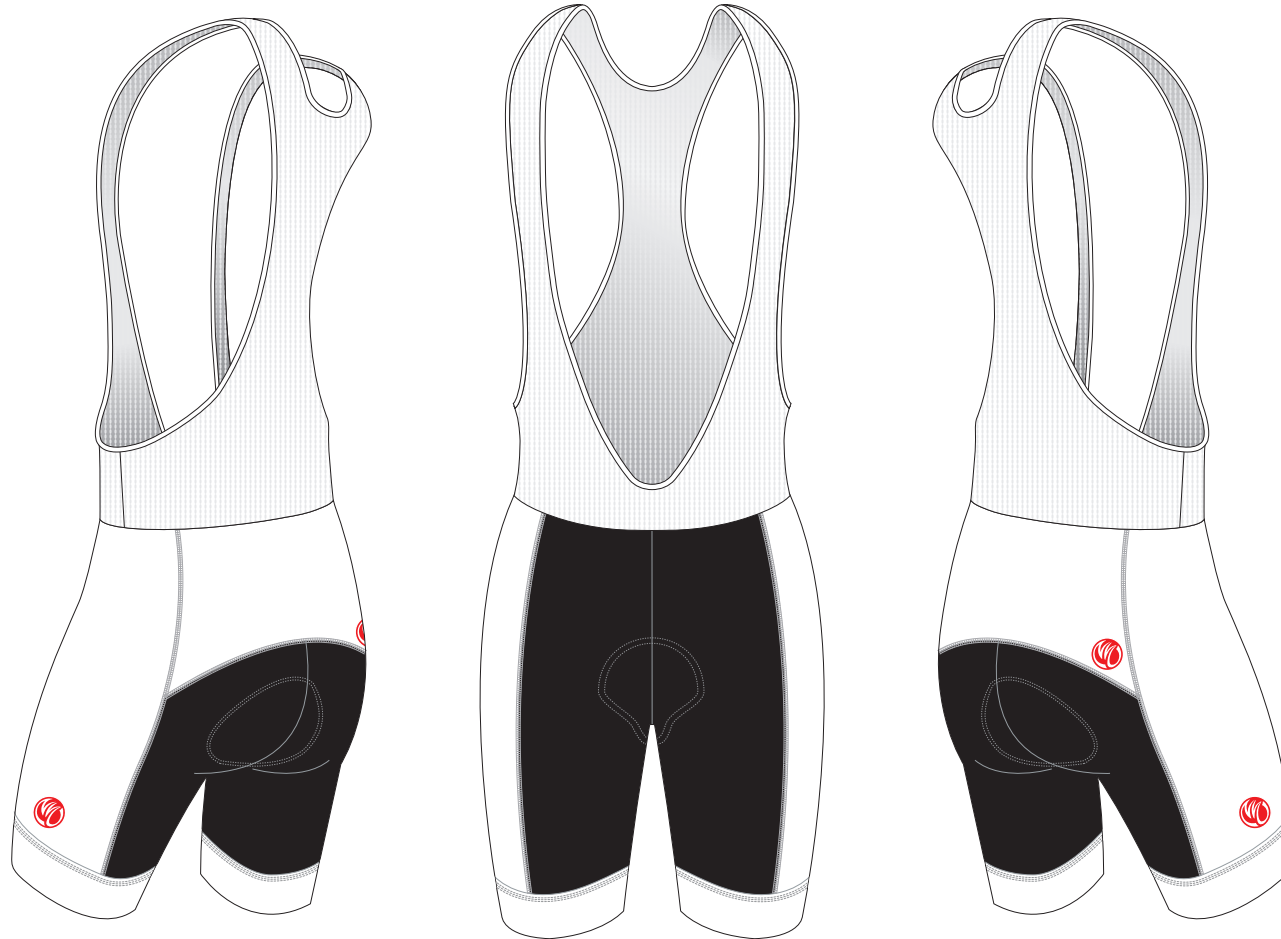
TAH06A 1/2 Cycling Bib Shorts

C Style, with 4.5 CM Power Band

CUSTOMER: _____ VERSION: 1
 DESIGN REQUEST NUMBER: _____ DATE: 00 / 00 / 2014
 www.nimblewear.com sales@nimblewear.com



Please note that NIMBLEWEAR logo must appear on the side panels and on the back panel for all the bottoms. NIMBLEWEAR standard power band for bib shorts is 4.5 CM in width. 7.5 CM power band is available upon customer's request.



PRE-DYED LYCRA:



COLORS USED:



OTHER OPTIONS FOR LEG HEM:



FLATLOCK COLOR OPTIONS:



* This template can be edited with vector graphic software programs. Adobe Illustrator CS5 is recommended.
 * All logos must be provided in vector format and all fonts must be converted into outline.
 * The color on-screen may vary from the finished product. To confirm the color please refer to PANTONE® MATCHING SYSTEM FORMULA GUIDE Solid Coated.
 * We will try the best to match the PANTONE® colors when printing, but exact matching cannot be guaranteed, due to variation in temperature, humidity and materials.

TAH07A 1/2 Cycling Bib Shorts

U Style, with Silicon Gripper

CUSTOMER: _____ VERSION: 1
 DESIGN REQUEST NUMBER: _____ DATE: 00 / 00 / 2014
 www.nimblewear.com sales@nimblewear.com



Please note that NIMBLEWEAR logo must appear on the side panels and on the back panel for all the bottoms.



PRE-DYED LYCRA:

- PANTONE® Black C
- PANTONE® Red 186C
- PANTONE® Dark Navy 2767 C
- PANTONE® Navy Blue 2735 C
- PANTONE® Light Blue 285 C
- PANTONE® Cool Grey 11C
- PANTONE® Green 340 C

REAR PANEL

COLORS USED:



OTHER OPTIONS FOR LEG HEM:



FLATLOCK COLOR OPTIONS:



- This template can be edited with vector graphic software programs. Adobe Illustrator CS5 is recommended.
- All logos must be provided in vector format and all fonts must be converted into outline.
- The color on-screen may vary from the finished product. To confirm the color please refer to PANTONE® MATCHING SYSTEM FORMULA GUIDE Solid Coated.
- We will try the best to match the PANTONE® colors when printing, but exact matching cannot be guaranteed, due to variation in temperature, humidity and materials.

TAH08A 1/2 Cycling Bib Shorts

U Style, with 4.5 CM Power Band

CUSTOMER: _____ VERSION: 1
 DESIGN REQUEST NUMBER: _____ DATE: 00 / 00 / 2014
 www.nimblewear.com sales@nimblewear.com



Please note that NIMBLEWEAR logo must appear on the side panels and on the back panel for all the bottoms. NIMBLEWEAR standard power band for bib shorts is 4.5 CM in width. 7.5 CM power band is available upon customer's request.



PRE-DYED LYCRA:



PANTONE® Black C



PANTONE® Red 186C



PANTONE® Dark Navy 2767 C



PANTONE® Navy Blue 2735 C



PANTONE® Light Blue 285 C



PANTONE® Cool Grey 11C



PANTONE® Green 340 C

COLORS USED:



OTHER OPTIONS FOR LEG HEM:



With Silicon Gripper



+ \$5
With 7.5 CM Power Band

FLATLOCK COLOR OPTIONS:



* This template can be edited with vector graphic software programs. Adobe Illustrator CS5 is recommended.
 * All logos must be provided in vector format and all fonts must be converted into outline.
 * The color on-screen may vary from the finished product. To confirm the color please refer to PANTONE® MATCHING SYSTEM FORMULA GUIDE Solid Coated.
 * We will try the best to match the PANTONE® colors when printing, but exact matching cannot be guaranteed, due to variation in temperature, humidity and materials.

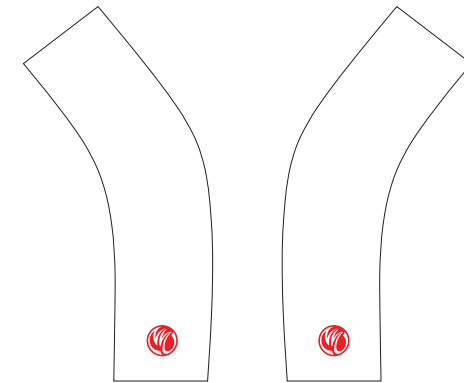
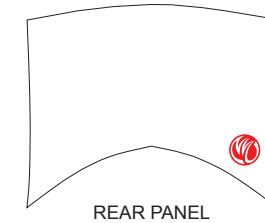
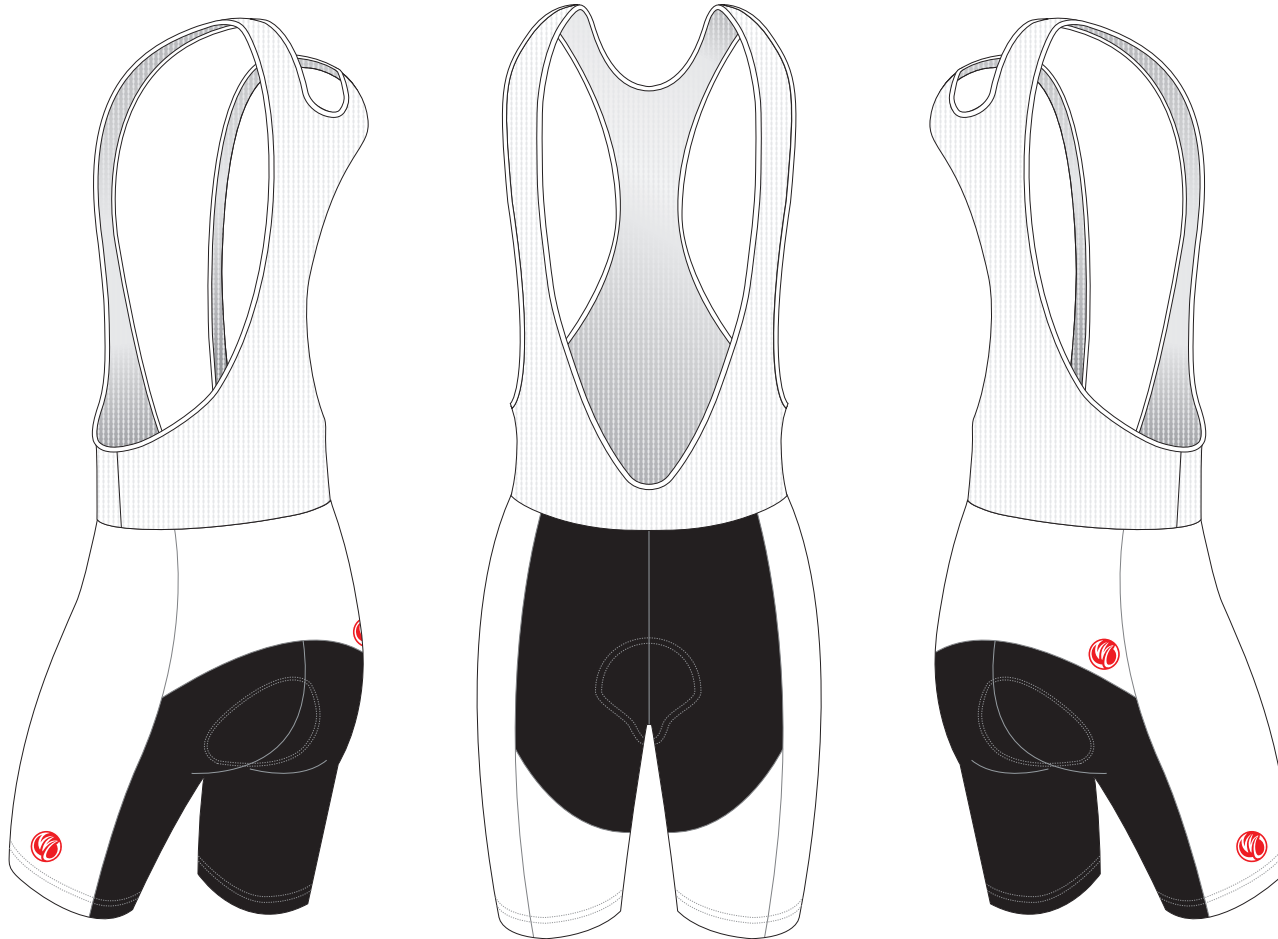
TAH09A 1/2 Cycling Bib Shorts

C+2 Style, with Silicon Gripper

CUSTOMER: _____ VERSION: 1
 DESIGN REQUEST NUMBER: _____ DATE: 00 / 00 / 2014
 www.nimblewear.com sales@nimblewear.com



Please note that NIMBLEWEAR logo must appear on the side panels and on the back panel for all the bottoms.



PRE-DYED LYCRA:



PANTONE® Black C



PANTONE® Red 186C



PANTONE® Dark Navy 2767 C



PANTONE® Navy Blue 2738 C



PANTONE® Light Blue 285 C



PANTONE® Cool Grey 11C



PANTONE® Green 340 C

COLORS USED:



OTHER OPTIONS FOR LEG HEM:



+ \$10
With 4.5 CM Power Band



+ \$15
With 7.5 CM Power Band

FLATLOCK COLOR OPTIONS:



* This template can be edited with vector graphic software programs. Adobe Illustrator CS5 is recommended.
 * All logos must be provided in vector format and all fonts must be converted into outline.
 * The color on-screen may vary from the finished product. To confirm the color please refer to PANTONE® MATCHING SYSTEM FORMULA GUIDE Solid Coated.
 * We will try the best to match the PANTONE® colors when printing, but exact matching cannot be guaranteed, due to variation in temperature, humidity and materials.

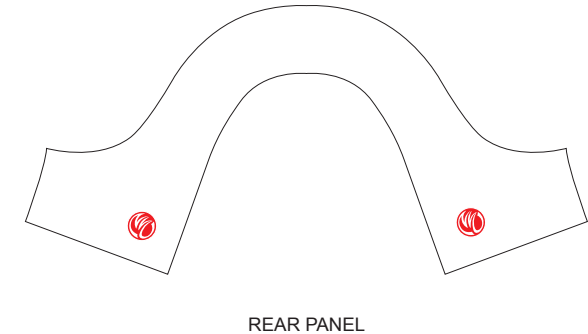
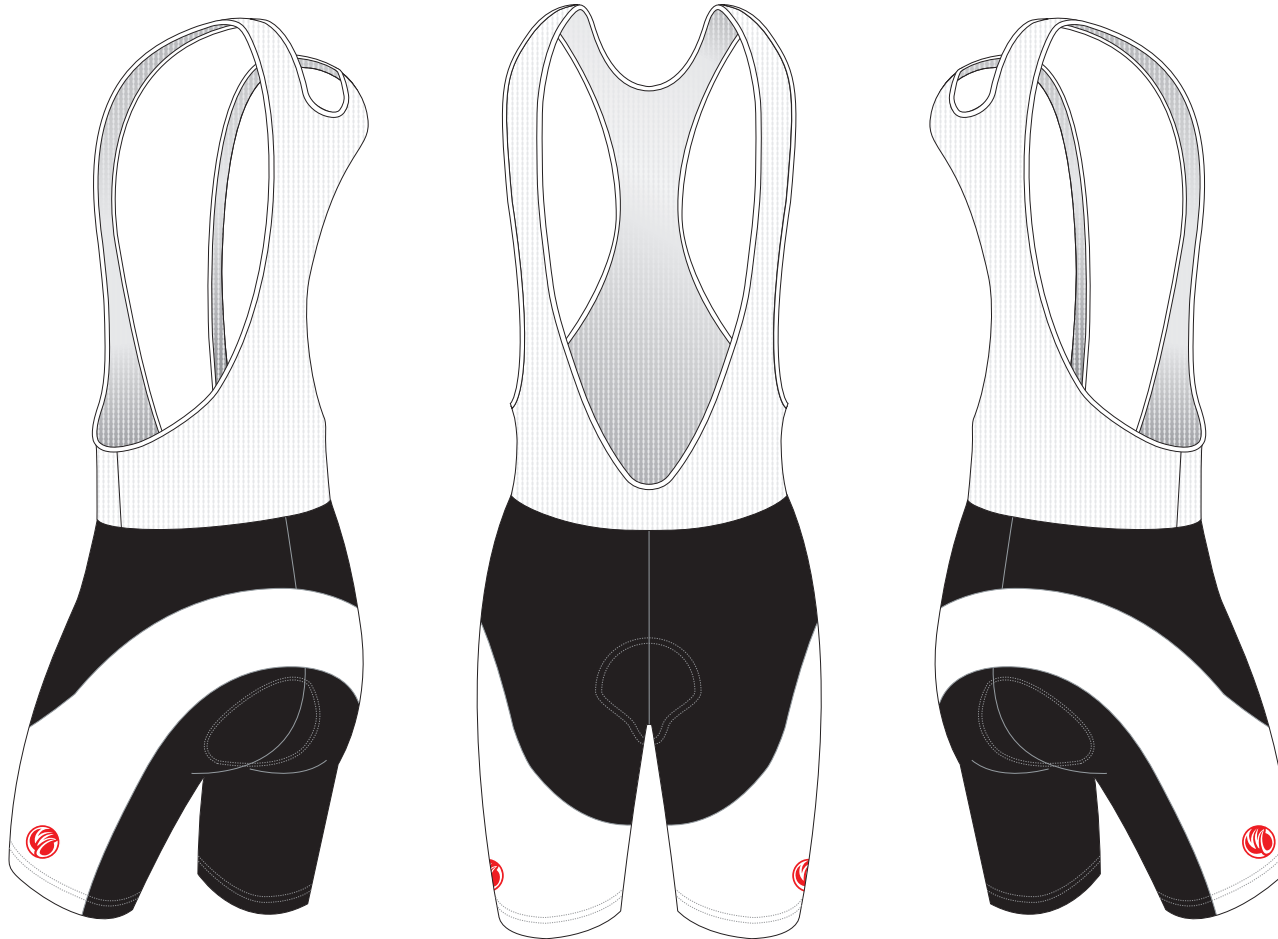
TAH10A 1/2 Cycling Bib Shorts

U Wrap Style, with Silicon Gripper

CUSTOMER: _____ VERSION: 1
 DESIGN REQUEST NUMBER: _____ DATE: 00 / 00 / 2014
 www.nimblewear.com sales@nimblewear.com



Please note that NIMBLEWEAR logo must appear on the side panels and on the back panel for all the bottoms.



PRE-DYED LYCRA:



PANTONE® Black C



PANTONE® Red 186C



PANTONE® Dark Navy 2767 C



PANTONE® Navy Blue 2735 C



PANTONE® Light Blue 285 C



PANTONE® Cool Grey 11C



PANTONE® Green 340 C

COLORS USED:



OTHER OPTIONS FOR LEG HEM:



+ \$10
With 4.5 CM Power Band



+ \$15
With 7.5 CM Power Band

FLATLOCK COLOR OPTIONS:



* This template can be edited with vector graphic software programs. Adobe Illustrator CS5 is recommended.
 * All logos must be provided in vector format and all fonts must be converted into outline.
 * The color on-screen may vary from the finished product. To confirm the color please refer to PANTONE® MATCHING SYSTEM FORMULA GUIDE Solid Coated.
 * We will try the best to match the PANTONE® colors when printing, but exact matching cannot be guaranteed, due to variation in temperature, humidity and materials.

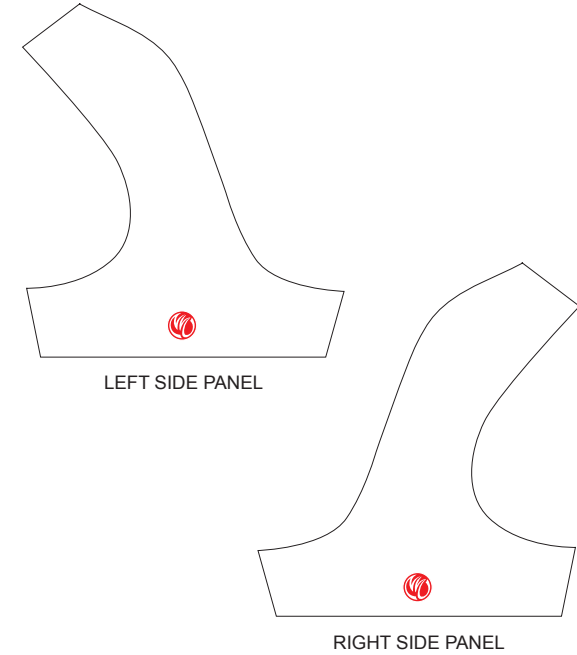
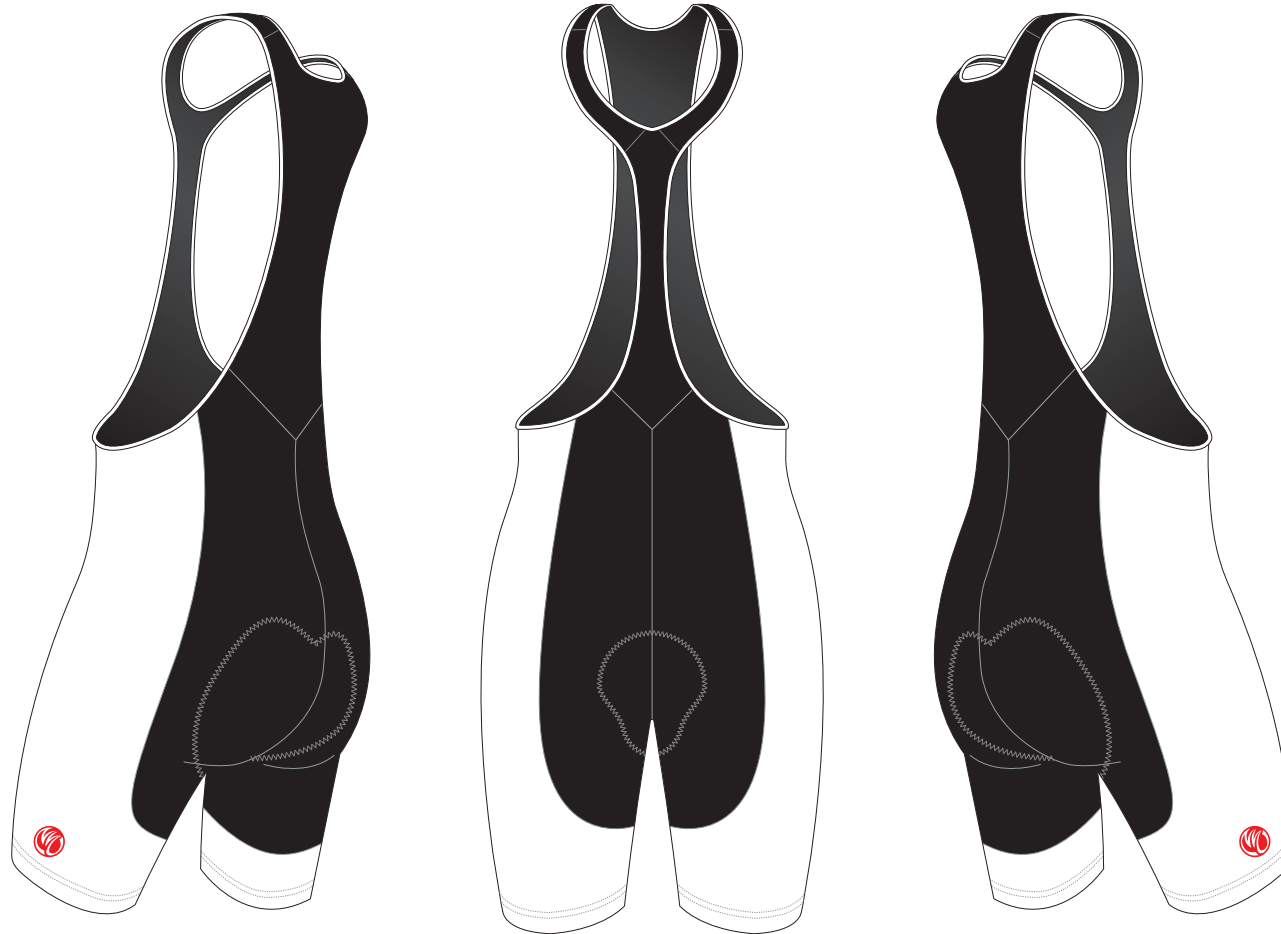
TAH11AW 1/2 Cycling Bib Shorts

DONNA, T Style, with Silicon Gripper, WOMEN

CUSTOMER: _____ VERSION: 1
 DESIGN REQUEST NUMBER: _____ DATE: 00 / 00 / 2014
 www.nimblewear.com sales@nimblewear.com



Please note that NIMBLEWEAR logo must appear on the side panels and on the back panel for all the bottoms.



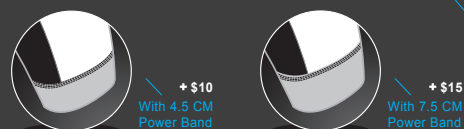
PRE-DYED LYCRA:



COLORS USED:



OTHER OPTIONS FOR LEG HEM:



FLATLOCK COLOR OPTIONS:



- * This template can be edited with vector graphic software programs. Adobe Illustrator CS5 is recommended.
- * All logos must be provided in vector format and all fonts must be converted into outline.
- * The color on-screen may vary from the finished product. To confirm the color please refer to PANTONE® MATCHING SYSTEM FORMULA GUIDE Solid Coated.
- * We will try the best to match the PANTONE® colors when printing, but exact matching cannot be guaranteed, due to variation in temperature, humidity and materials.

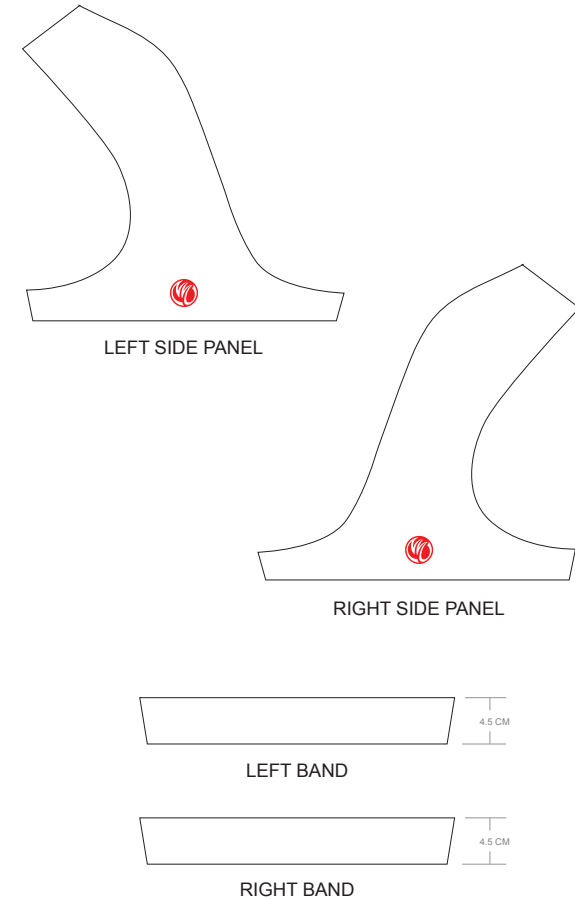
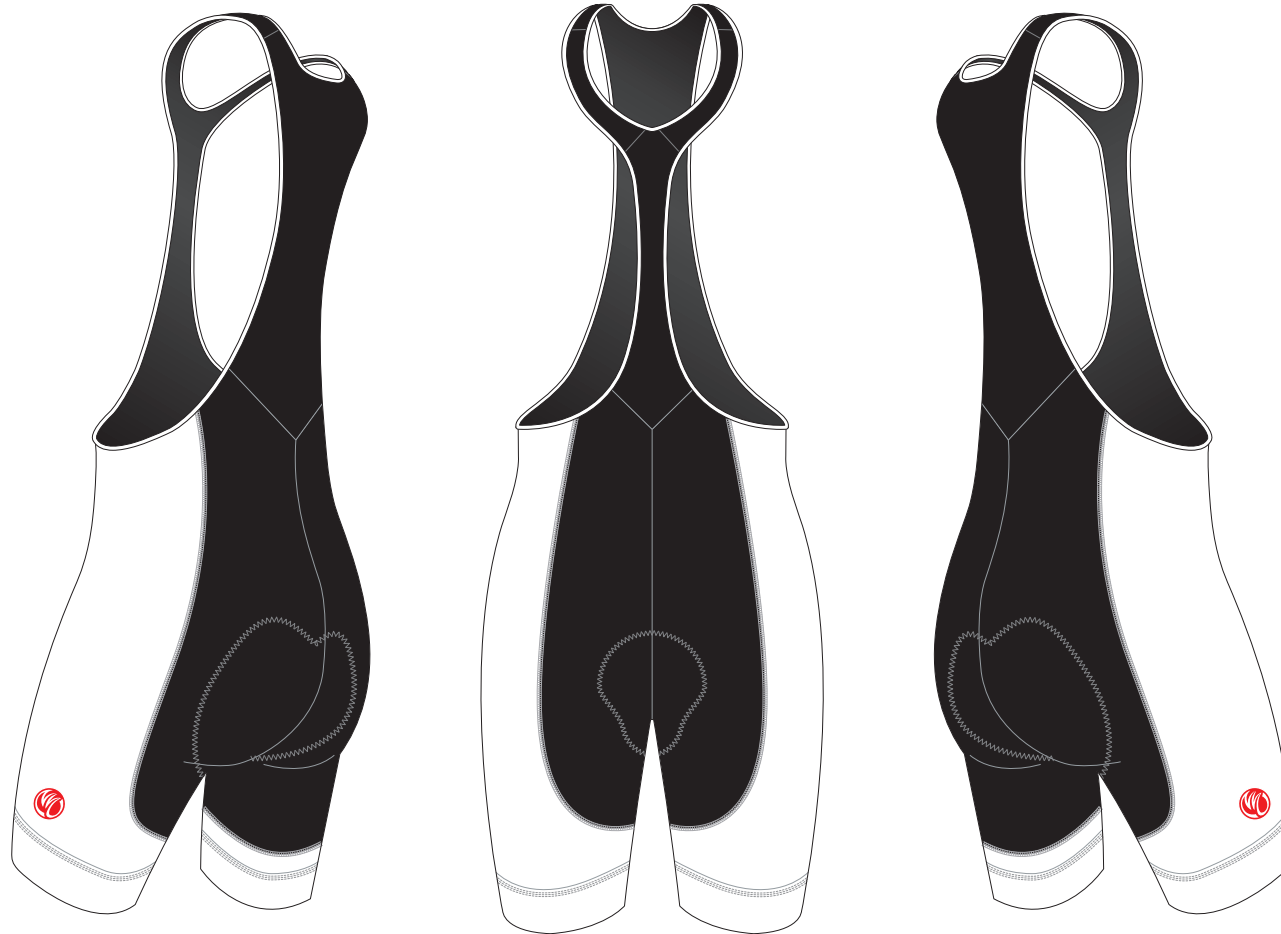
TAH12AW 1/2 Cycling Bib Shorts

DONNA, T Style, with 4.5 CM Power Band, WOMEN

CUSTOMER: _____ VERSION: 1
 DESIGN REQUEST NUMBER: _____ DATE: 00 / 00 / 2014
 www.nimblewear.com sales@nimblewear.com



Please note that NIMBLEWEAR logo must appear on the side panels and on the back panel for all the bottoms. NIMBLEWEAR standard power band for bib shorts is 4.5 CM in width. 7.5 CM power band is available upon customer's request.



PRE-DYED LYCRA:



COLORS USED:



OTHER OPTIONS FOR LEG HEM:



FLATLOCK COLOR OPTIONS:



* This template can be edited with vector graphic software programs. Adobe Illustrator CS5 is recommended.
 * All logos must be provided in vector format and all fonts must be converted into outline.
 * The color on-screen may vary from the finished product. To confirm the color please refer to PANTONE® MATCHING SYSTEM FORMULA GUIDE Solid Coated.
 * We will try the best to match the PANTONE® colors when printing, but exact matching cannot be guaranteed, due to variation in temperature, humidity and materials.

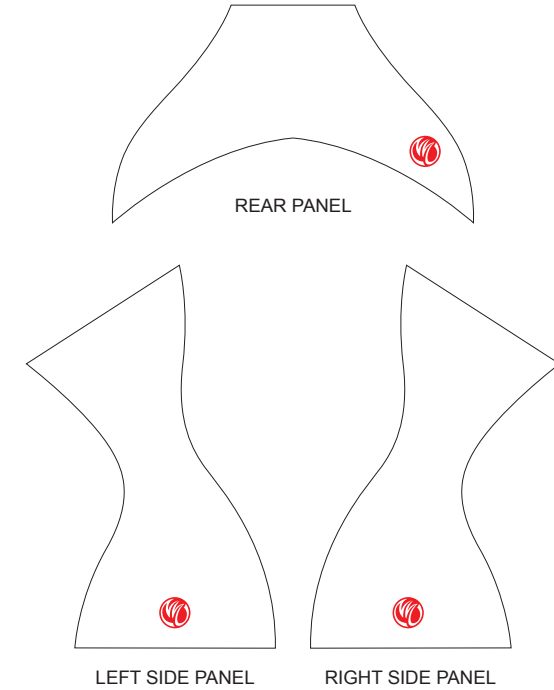
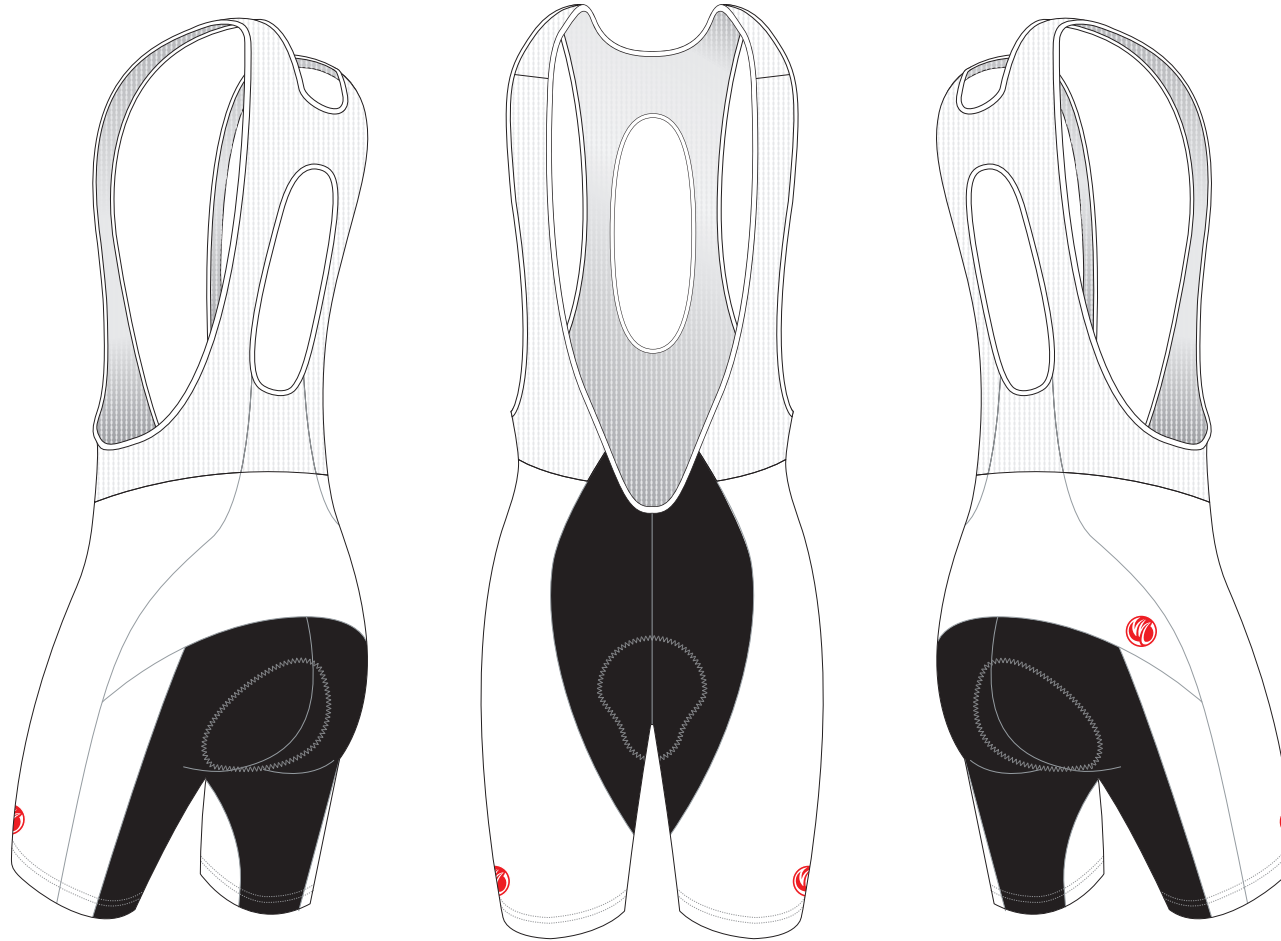
TAH13B 1/2 Cycling Bib Shorts

AXIS, with Silicon Gripper

CUSTOMER: _____ VERSION: 1
 DESIGN REQUEST NUMBER: _____ DATE: 00 / 00 / 2014
 www.nimblewear.com sales@nimblewear.com



Please note that NIMBLEWEAR logo must appear on the side panels and on the back panel for all the bottoms.



PRE-DYED LYCRA:



PANTONE® Black C



PANTONE® Red 186C



PANTONE® Dark Navy 2767 C



PANTONE® Navy Blue 2735 C



PANTONE® Light Blue 285 C



PANTONE® Cool Grey 11C



PANTONE® Green 340 C

COLORS USED:



OTHER OPTIONS FOR LEG HEM:



+ \$10
With 4.5 CM Power Band



+ \$15
With 7.5 CM Power Band

FLATLOCK COLOR OPTIONS:



* This template can be edited with vector graphic software programs. Adobe Illustrator CS5 is recommended.
 * All logos must be provided in vector format and all fonts must be converted into outline.
 * The color on-screen may vary from the finished product. To confirm the color please refer to PANTONE® MATCHING SYSTEM FORMULA GUIDE Solid Coated.
 * We will try the best to match the PANTONE® colors when printing, but exact matching cannot be guaranteed, due to variation in temperature, humidity and materials.

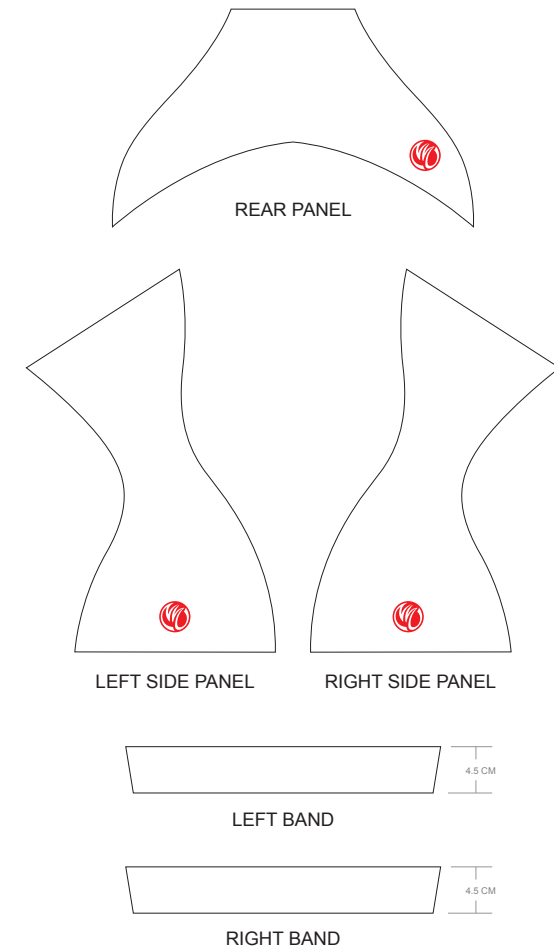
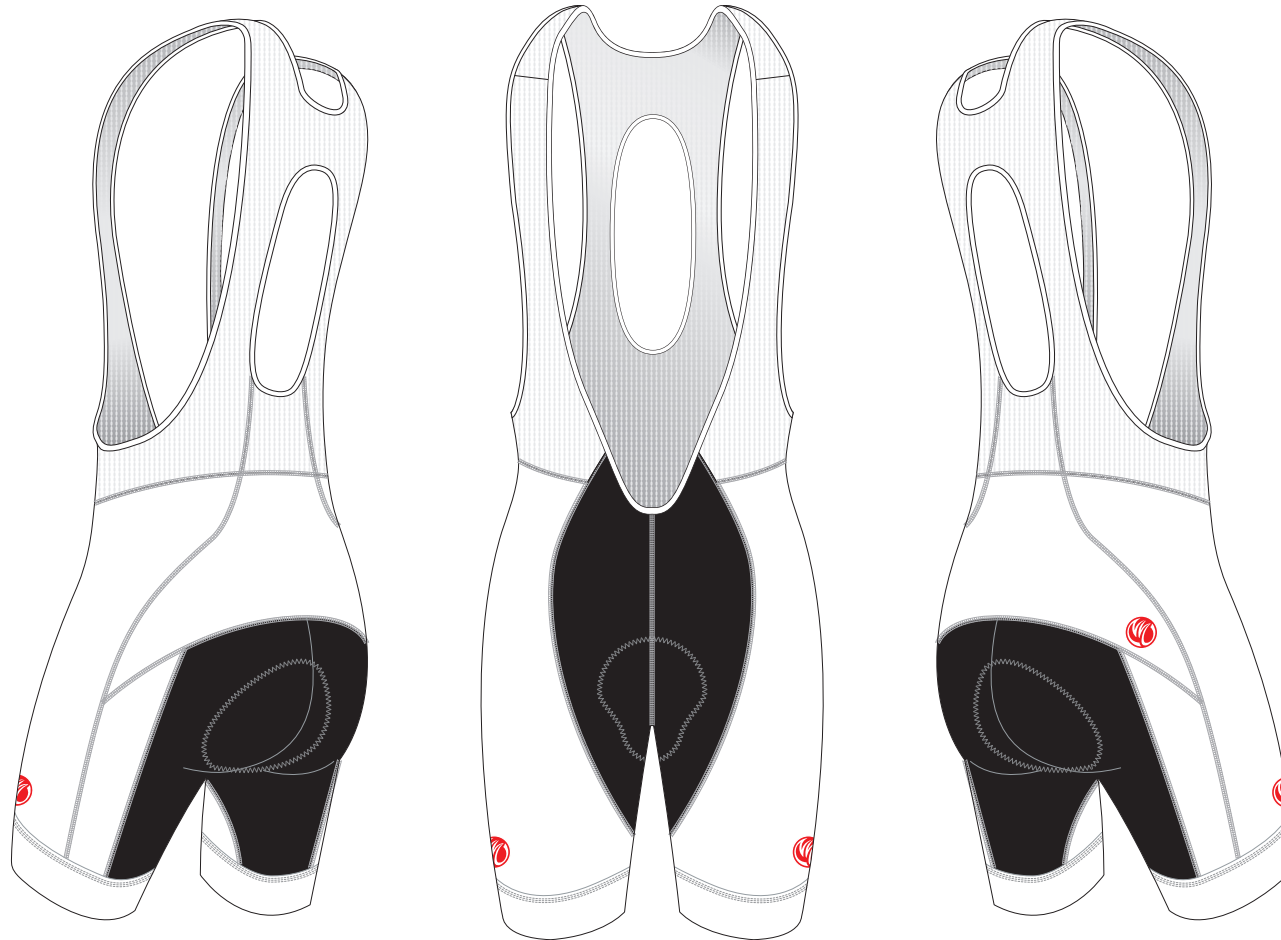
TAH14B 1/2 Cycling Bib Shorts

AXIS, with 4.5 CM Power Band

CUSTOMER: _____ VERSION: 1
 DESIGN REQUEST NUMBER: _____ DATE: 00 / 00 / 2014
 www.nimblewear.com sales@nimblewear.com



Please note that NIMBLEWEAR logo must appear on the side panels and on the back panel for all the bottoms. NIMBLEWEAR standard power band for bib shorts is 4.5 CM in width. 7.5 CM power band is available upon customer's request.



PRE-DYED LYCRA:



PANTONE® Black C



PANTONE® Red 186C



PANTONE® Dark Navy 2787 C



PANTONE® Navy Blue 2738 C



PANTONE® Light Blue 285 C



PANTONE® Cool Grey 11C



PANTONE® Green 340 C

COLORS USED:



OTHER OPTIONS FOR LEG HEM:



With Silicon Gripper



+ \$5
With 7.5 CM Power Band

FLATLOCK COLOR OPTIONS:



* This template can be edited with vector graphic software programs. Adobe Illustrator CS5 is recommended.
 * All logos must be provided in vector format and all fonts must be converted into outline.
 * The color on-screen may vary from the finished product. To confirm the color please refer to PANTONE® MATCHING SYSTEM FORMULA GUIDE Solid Coated.
 * We will try the best to match the PANTONE® colors when printing, but exact matching cannot be guaranteed, due to variation in temperature, humidity and materials.

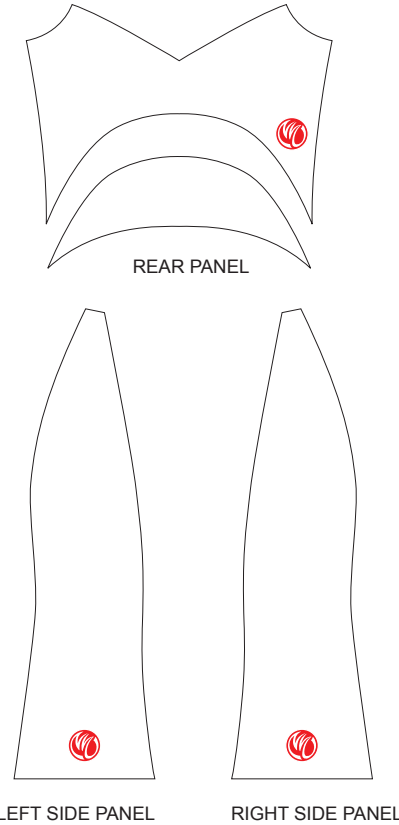
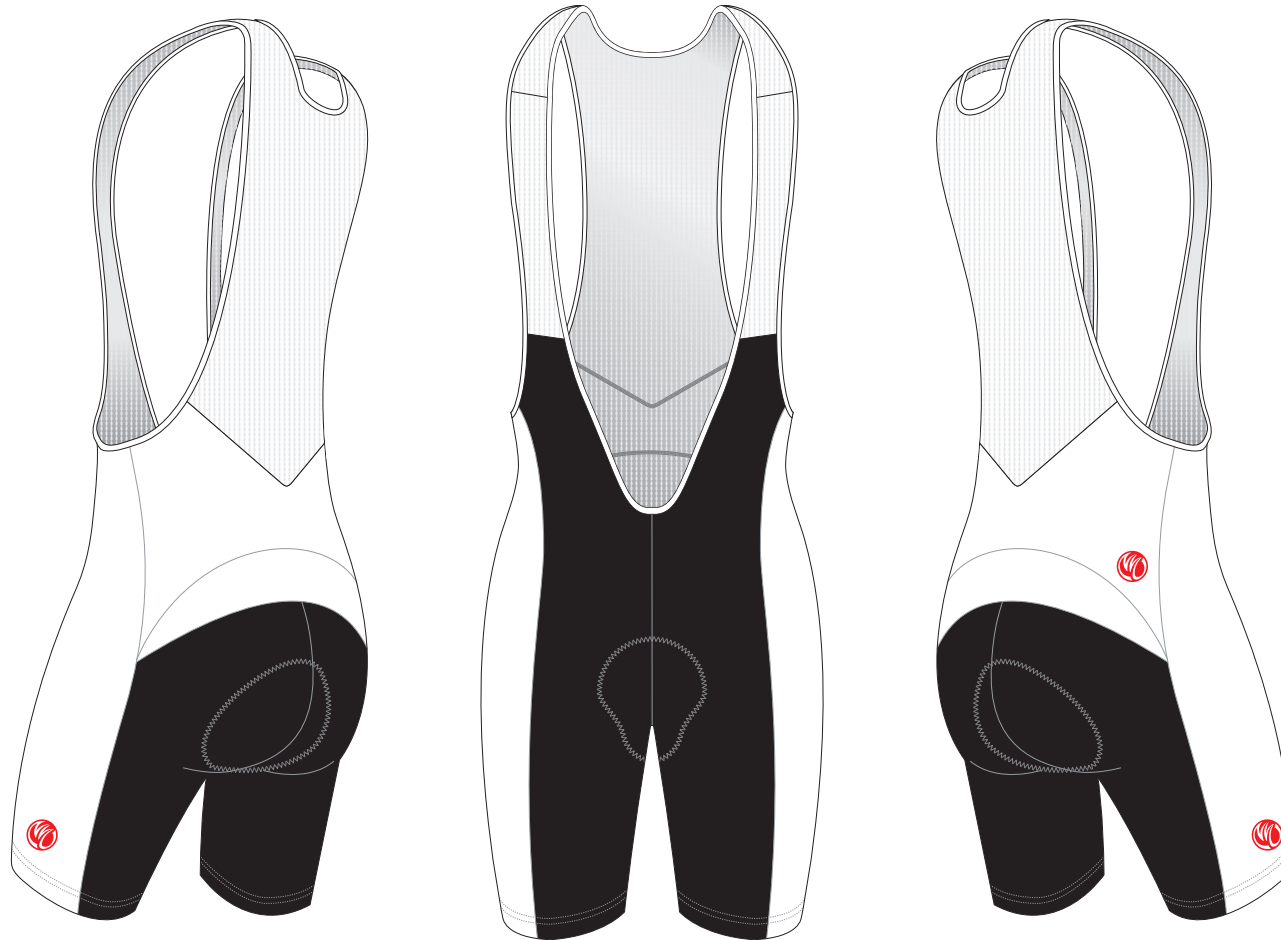
TAH15B 1/2 Cycling Bib Shorts

BLAZE, with Silicon Gripper

CUSTOMER: _____ VERSION: 1
 DESIGN REQUEST NUMBER: _____ DATE: 00 / 00 / 2014
 www.nimblewear.com sales@nimblewear.com



Please note that NIMBLEWEAR logo must appear on the side panels and on the back panel for all the bottoms.



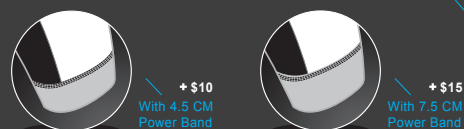
PRE-DYED LYCRA:

-  PANTONE® Black C
-  PANTONE® Red 186C
-  PANTONE® Dark Navy 2767 C
-  PANTONE® Navy Blue 2735 C
-  PANTONE® Light Blue 285 C
-  PANTONE® Cool Grey 11C
-  PANTONE® Green 340 C

COLORS USED:



OTHER OPTIONS FOR LEG HEM:



FLATLOCK COLOR OPTIONS:



• This template can be edited with vector graphic software programs. Adobe Illustrator CS5 is recommended.
 • All logos must be provided in vector format and all fonts must be converted into outline.
 • The color on-screen may vary from the finished product. To confirm the color please refer to PANTONE® MATCHING SYSTEM FORMULA GUIDE Solid Coated.
 • We will try the best to match the PANTONE® colors when printing, but exact matching cannot be guaranteed, due to variation in temperature, humidity and materials.

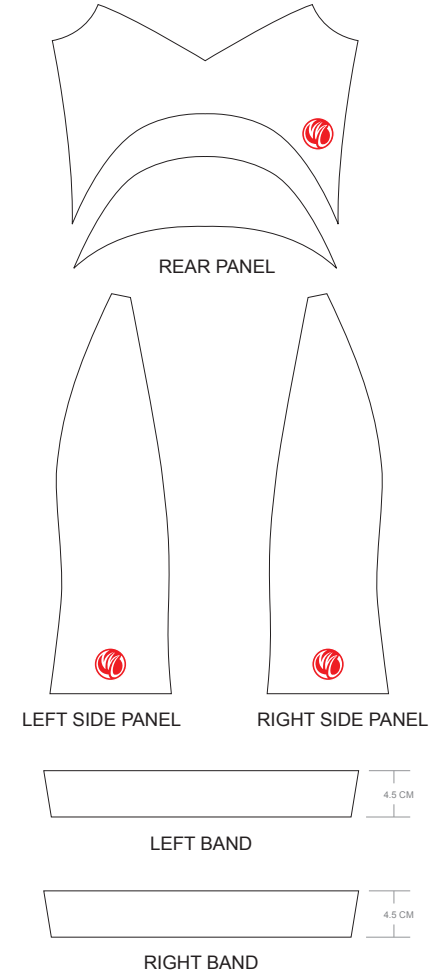
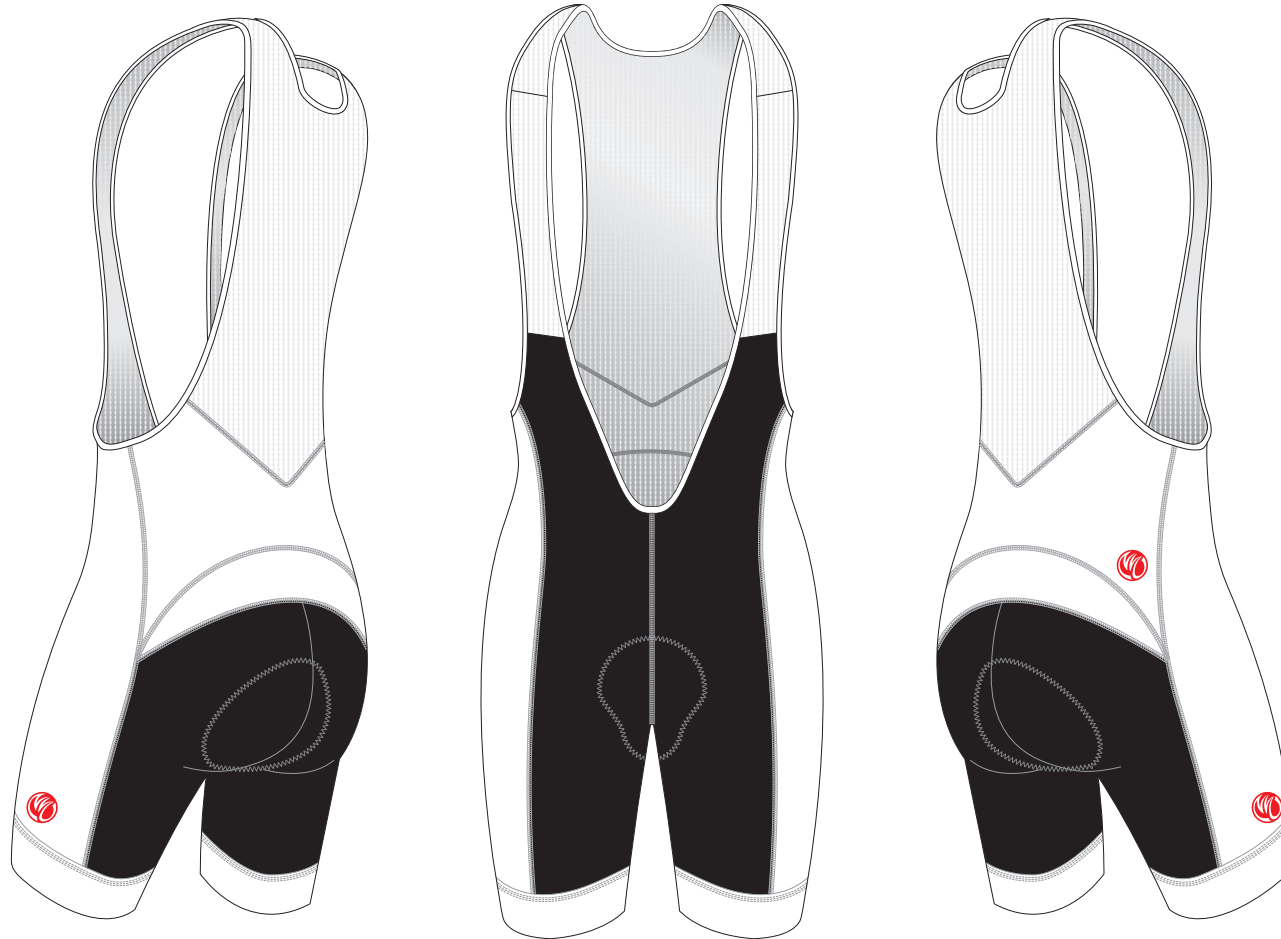
TAH16B 1/2 Cycling Bib Shorts

BLAZE, with 4.5 CM Power Band

CUSTOMER: _____ VERSION: 1
 DESIGN REQUEST NUMBER: _____ DATE: 00 / 00 / 2014
 www.nimblewear.com sales@nimblewear.com



Please note that NIMBLEWEAR logo must appear on the side panels and on the back panel for all the bottoms. NIMBLEWEAR standard power band for bib shorts is 4.5 CM in width. 7.5 CM power band is available upon customer's request.



PRE-DYED LYCRA:



COLORS USED:



OTHER OPTIONS FOR LEG HEM:



FLATLOCK COLOR OPTIONS:



* This template can be edited with vector graphic software programs. Adobe Illustrator CS5 is recommended.
 * All logos must be provided in vector format and all fonts must be converted into outline.
 * The color on-screen may vary from the finished product. To confirm the color please refer to PANTONE[®] MATCHING SYSTEM FORMULA GUIDE Solid Coated.
 * We will try the best to match the PANTONE[®] colors when printing, but exact matching cannot be guaranteed, due to variation in temperature, humidity and materials.

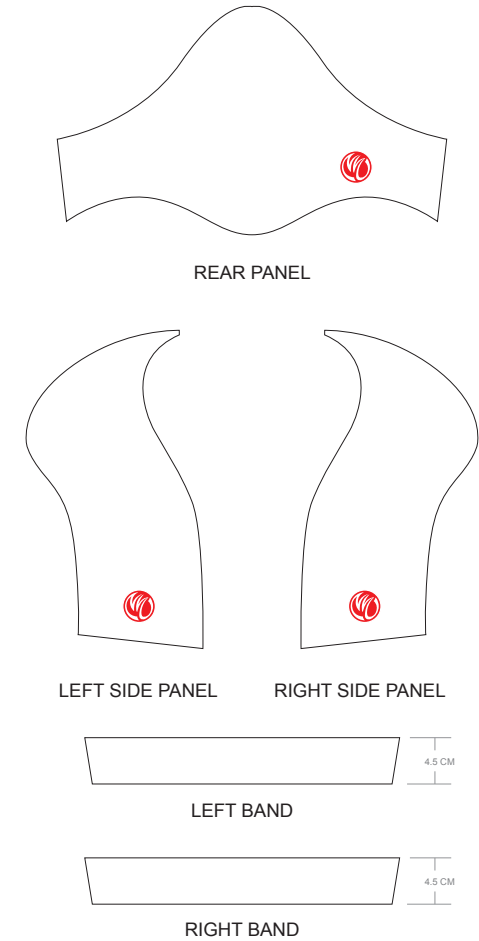
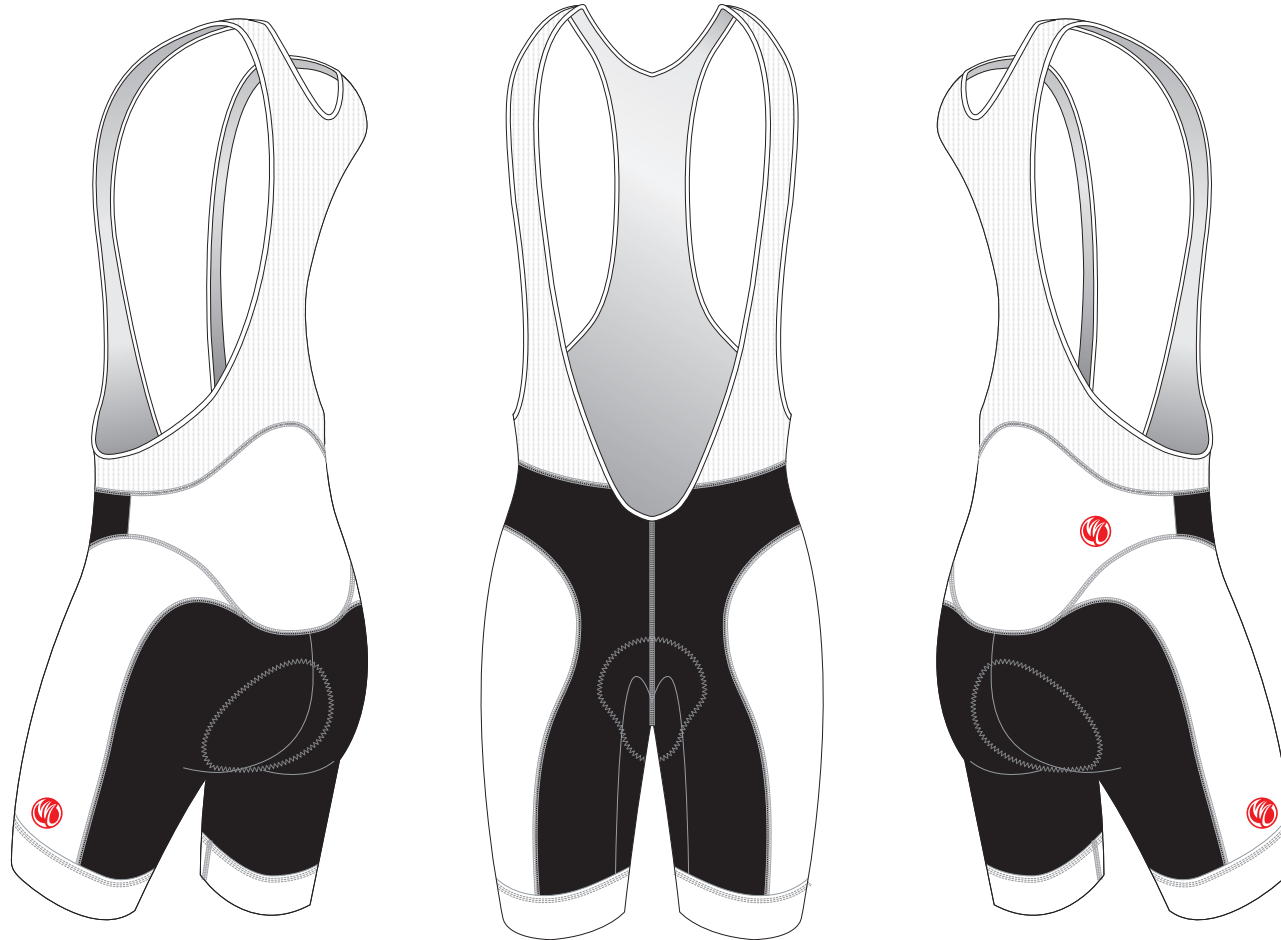
TAH17B 1/2 Cycling Bib Shorts

COBRA, with 4.5 CM Power Band

CUSTOMER: _____ VERSION: 1
 DESIGN REQUEST NUMBER: _____ DATE: 00 / 00 / 2014
 www.nimblewear.com sales@nimblewear.com



Please note that NIMBLEWEAR logo must appear on the side panels and on the back panel for all the bottoms. NIMBLEWEAR standard power band for bib shorts is 4.5 CM in width. 7.5 CM power band is available upon customer's request.



PRE-DYED LYCRA:

PANTONE® Black C

PANTONE® Red 186C

PANTONE® Dark Navy 2767 C

PANTONE® Navy Blue 2735 C

PANTONE® Light Blue 285 C

PANTONE® Cool Grey 11C

PANTONE® Green 340 C

COLORS USED:



OTHER OPTIONS FOR LEG HEM:



FLATLOCK COLOR OPTIONS:



* This template can be edited with vector graphic software programs. Adobe Illustrator CS5 is recommended.
 * All logos must be provided in vector format and all fonts must be converted into outline.
 * The color on-screen may vary from the finished product. To confirm the color please refer to PANTONE® MATCHING SYSTEM FORMULA GUIDE Solid Coated.
 * We will try the best to match the PANTONE® colors when printing, but exact matching cannot be guaranteed, due to variation in temperature, humidity and materials.

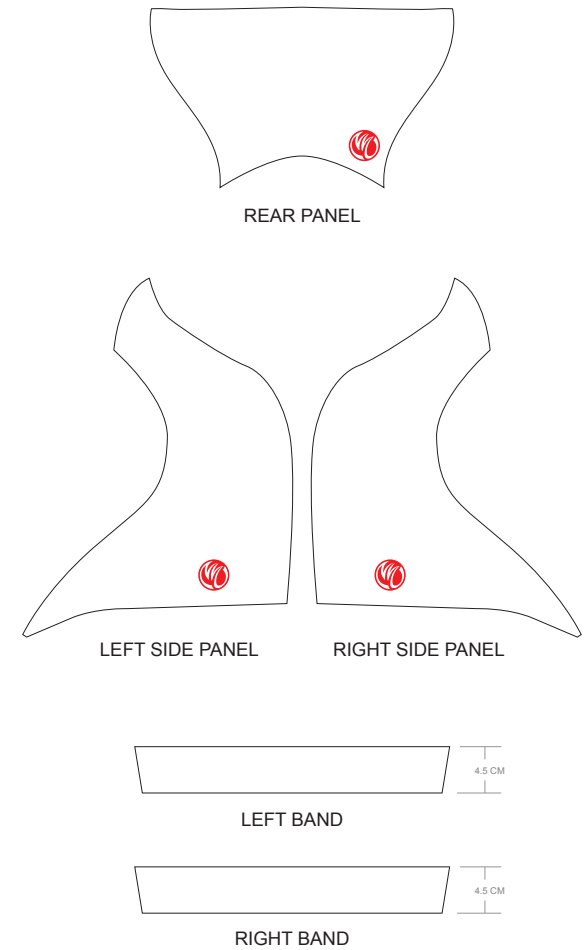
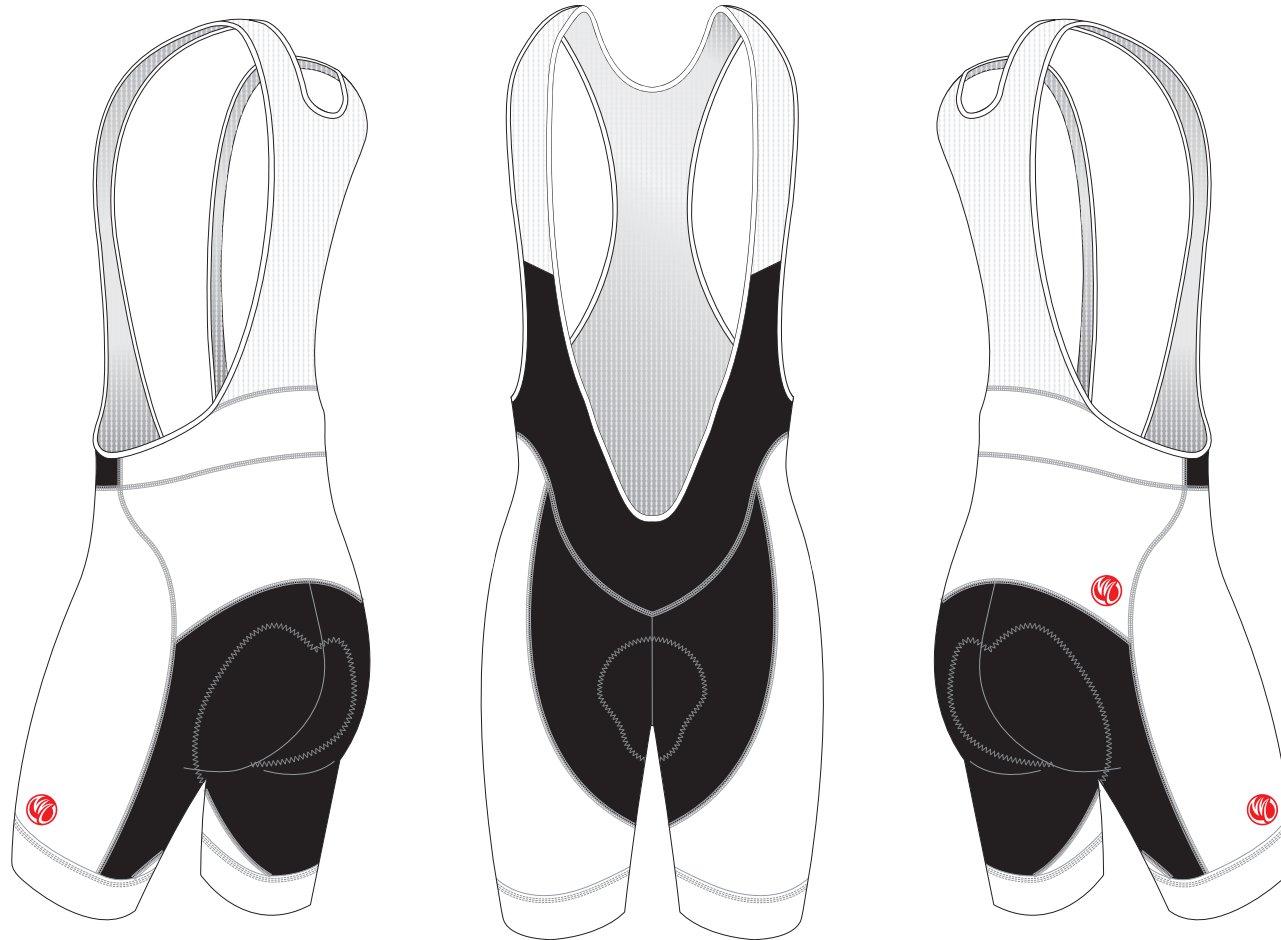
TAH18B 1/2 Cycling Bib Shorts

MOSSA, with 4.5 CM Power Band

CUSTOMER: _____ VERSION: 1
 DESIGN REQUEST NUMBER: _____ DATE: 00 / 00 / 2014
 www.nimblewear.com sales@nimblewear.com



Please note that NIMBLEWEAR logo must appear on the side panels and on the back panel for all the bottoms. NIMBLEWEAR standard power band for bib shorts is 4.5 CM in width. 7.5 CM power band is available upon customer's request.



PRE-DYED LYCRA:



COLORS USED:



OTHER OPTIONS FOR LEG HEM:



FLATLOCK COLOR OPTIONS:



* This template can be edited with vector graphic software programs. Adobe Illustrator CS5 is recommended.
 * All logos must be provided in vector format and all fonts must be converted into outline.
 * The color on-screen may vary from the finished product. To confirm the color please refer to PANTONE® MATCHING SYSTEM FORMULA GUIDE Solid Coated.
 * We will try the best to match the PANTONE® colors when printing, but exact matching cannot be guaranteed, due to variation in temperature, humidity and materials.

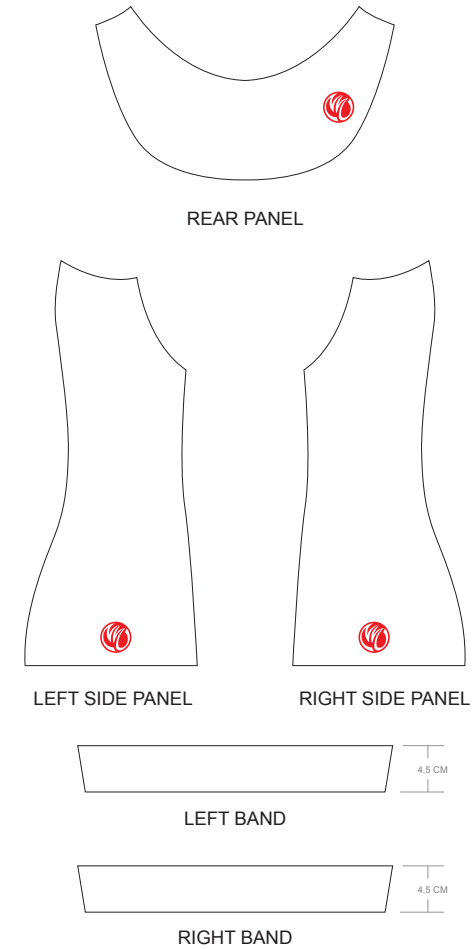
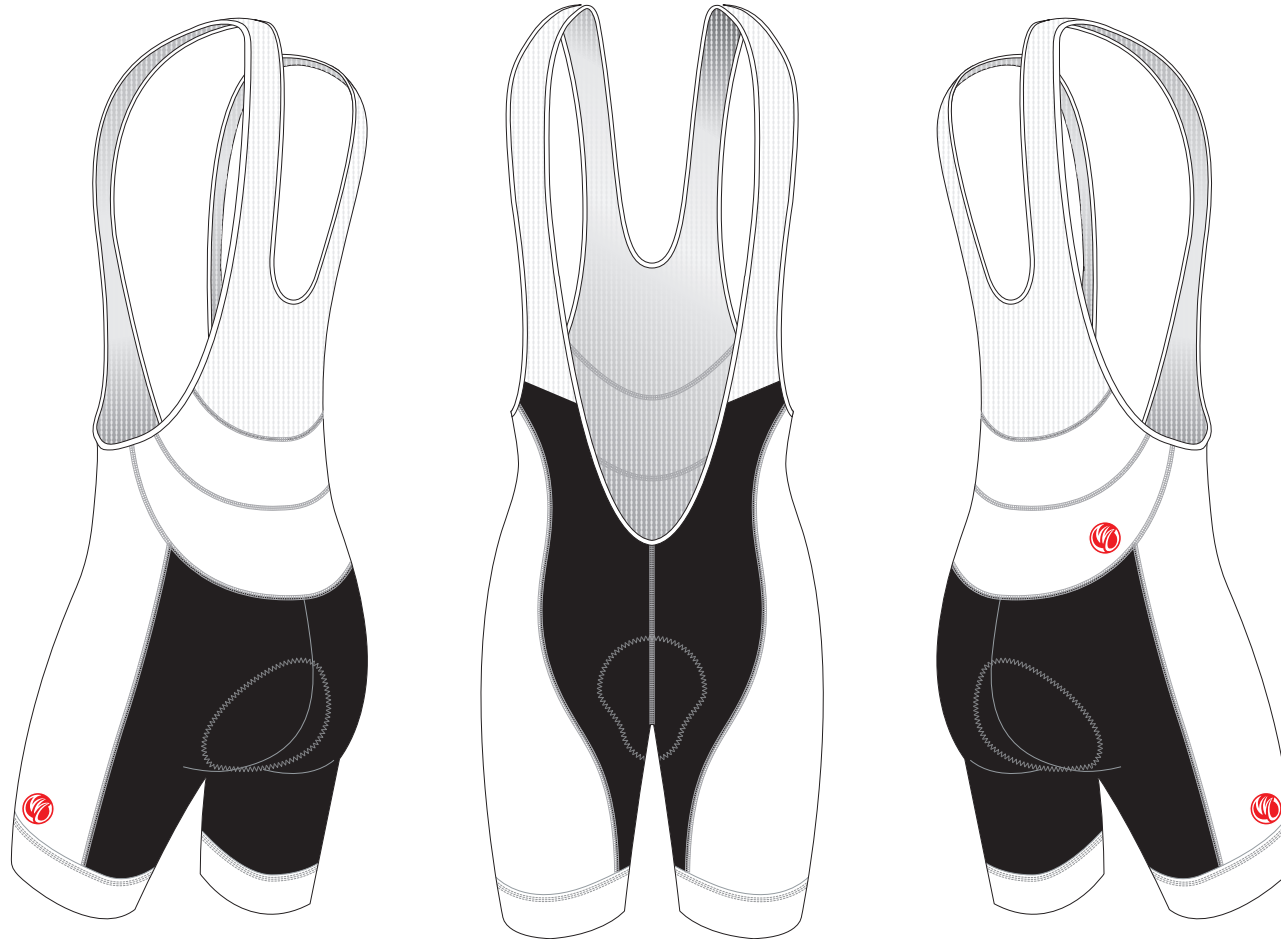
TAH19B 1/2 Cycling Bib Shorts

GIRO, with 4.5 CM Power Band

CUSTOMER: _____ VERSION: 1
 DESIGN REQUEST NUMBER: _____ DATE: 00 / 00 / 2014
 www.nimblewear.com sales@nimblewear.com



Please note that NIMBLEWEAR logo must appear on the side panels and on the back panel for all the bottoms. NIMBLEWEAR standard power band for bib shorts is 4.5 CM in width. 7.5 CM power band is available upon customer's request.



PRE-DYED LYCRA:



COLORS USED:



OTHER OPTIONS FOR LEG HEM:



FLATLOCK COLOR OPTIONS:



* This template can be edited with vector graphic software programs. Adobe Illustrator CS5 is recommended.
 * All logos must be provided in vector format and all fonts must be converted into outline.
 * The color on-screen may vary from the finished product. To confirm the color please refer to PANTONE® MATCHING SYSTEM FORMULA GUIDE Solid Coated.
 * We will try the best to match the PANTONE® colors when printing, but exact matching cannot be guaranteed, due to variation in temperature, humidity and materials.

TAH20B 1/2 Cycling Bib Shorts

FUSION, with 4.5 CM Power Band

CUSTOMER: _____ VERSION: 1
 DESIGN REQUEST NUMBER: _____ DATE: 00 / 00 / 2014
 www.nimblewear.com sales@nimblewear.com



Please note that NIMBLEWEAR logo must appear on the side panels and on the back panel for all the bottoms. NIMBLEWEAR standard power band for bib shorts is 4.5 CM in width. 7.5 CM power band is available upon customer's request.



PRE-DYED LYCRA:

- PANTONE® Black C
- PANTONE® Red 186C
- PANTONE® Dark Navy 2767 C
- PANTONE® Navy Blue 2735 C
- PANTONE® Light Blue 285 C
- PANTONE® Cool Grey 11C
- PANTONE® Green 340 C

COLORS USED:



OTHER OPTIONS FOR LEG HEM:



FLATLOCK COLOR OPTIONS:



• This template can be edited with vector graphic software programs. Adobe Illustrator CS5 is recommended.
 • All logos must be provided in vector format and all fonts must be converted into outline.
 • The color on-screen may vary from the finished product. To confirm the color please refer to PANTONE® MATCHING SYSTEM FORMULA GUIDE Solid Coated.
 • We will try the best to match the PANTONE® colors when printing, but exact matching cannot be guaranteed, due to variation in temperature, humidity and materials.

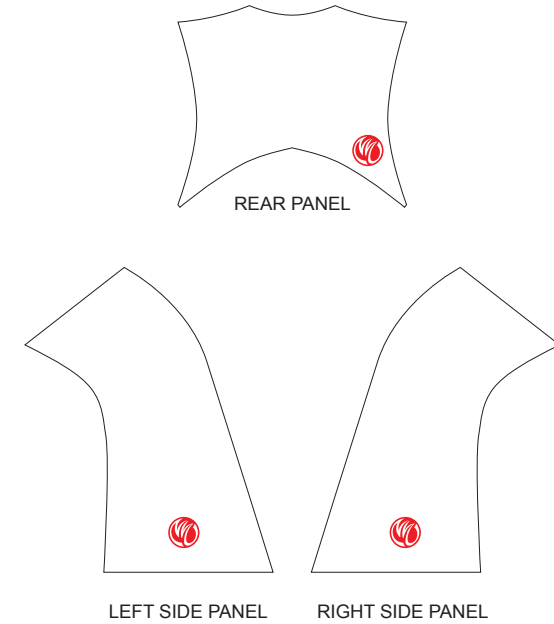
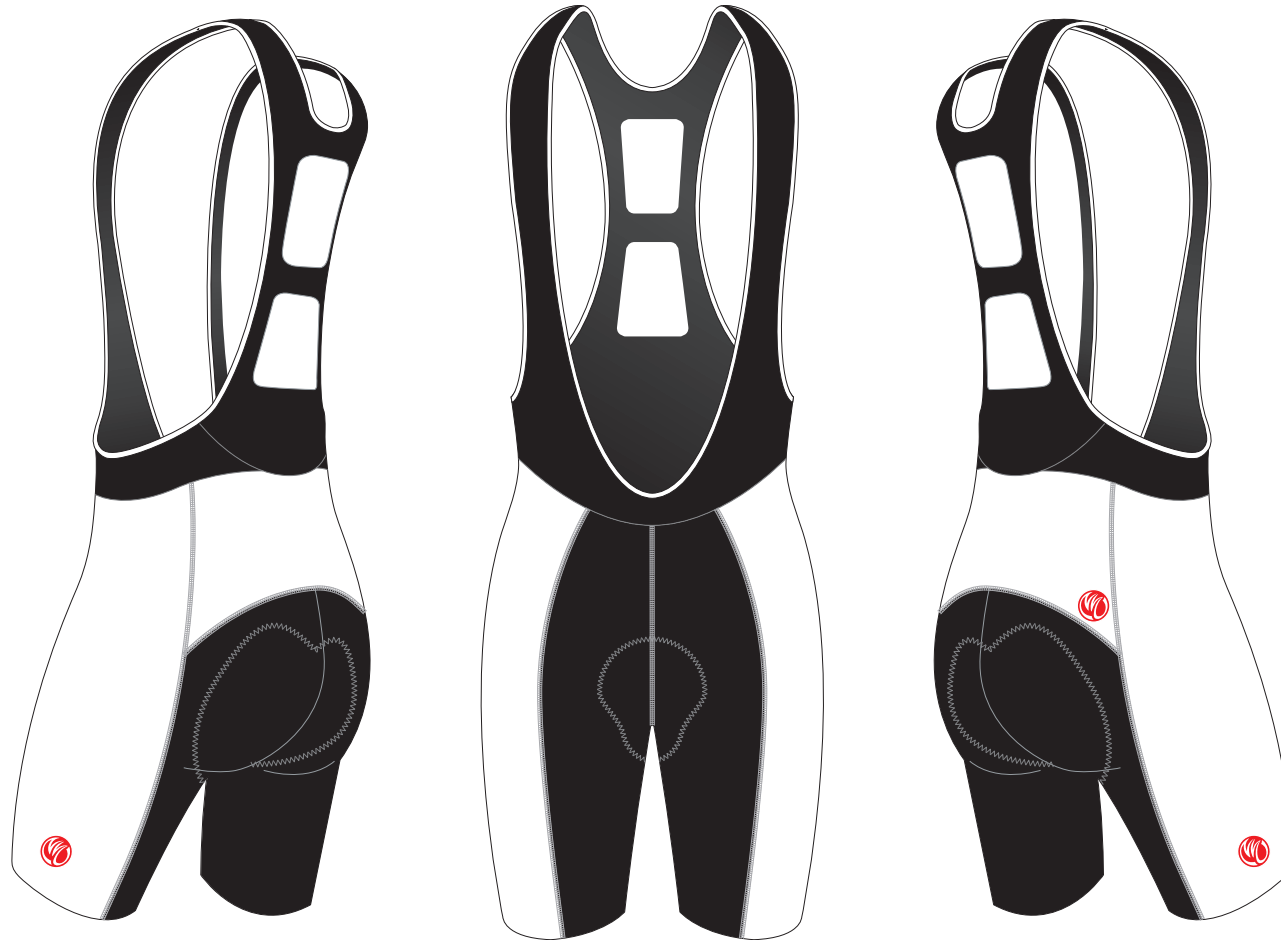
TAH21BW 1/2 Cycling Bib Shorts

BELLO, with Silicon Gripper, WOMEN

CUSTOMER: _____ VERSION: 1
 DESIGN REQUEST NUMBER: _____ DATE: 00 / 00 / 2014
 www.nimblewear.com sales@nimblewear.com



Please note that NIMBLEWEAR logo must appear on the side panels and on the back panel for all the bottoms.



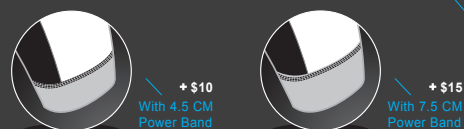
PRE-DYED LYCRA:



COLORS USED:



OTHER OPTIONS FOR LEG HEM:



FLATLOCK COLOR OPTIONS:



* This template can be edited with vector graphic software programs. Adobe Illustrator CS5 is recommended.
 * All logos must be provided in vector format and all fonts must be converted into outline.
 * The color on-screen may vary from the finished product. To confirm the color please refer to PANTONE® MATCHING SYSTEM FORMULA GUIDE Solid Coated.
 * We will try the best to match the PANTONE® colors when printing, but exact matching cannot be guaranteed, due to variation in temperature, humidity and materials.

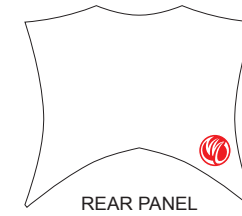
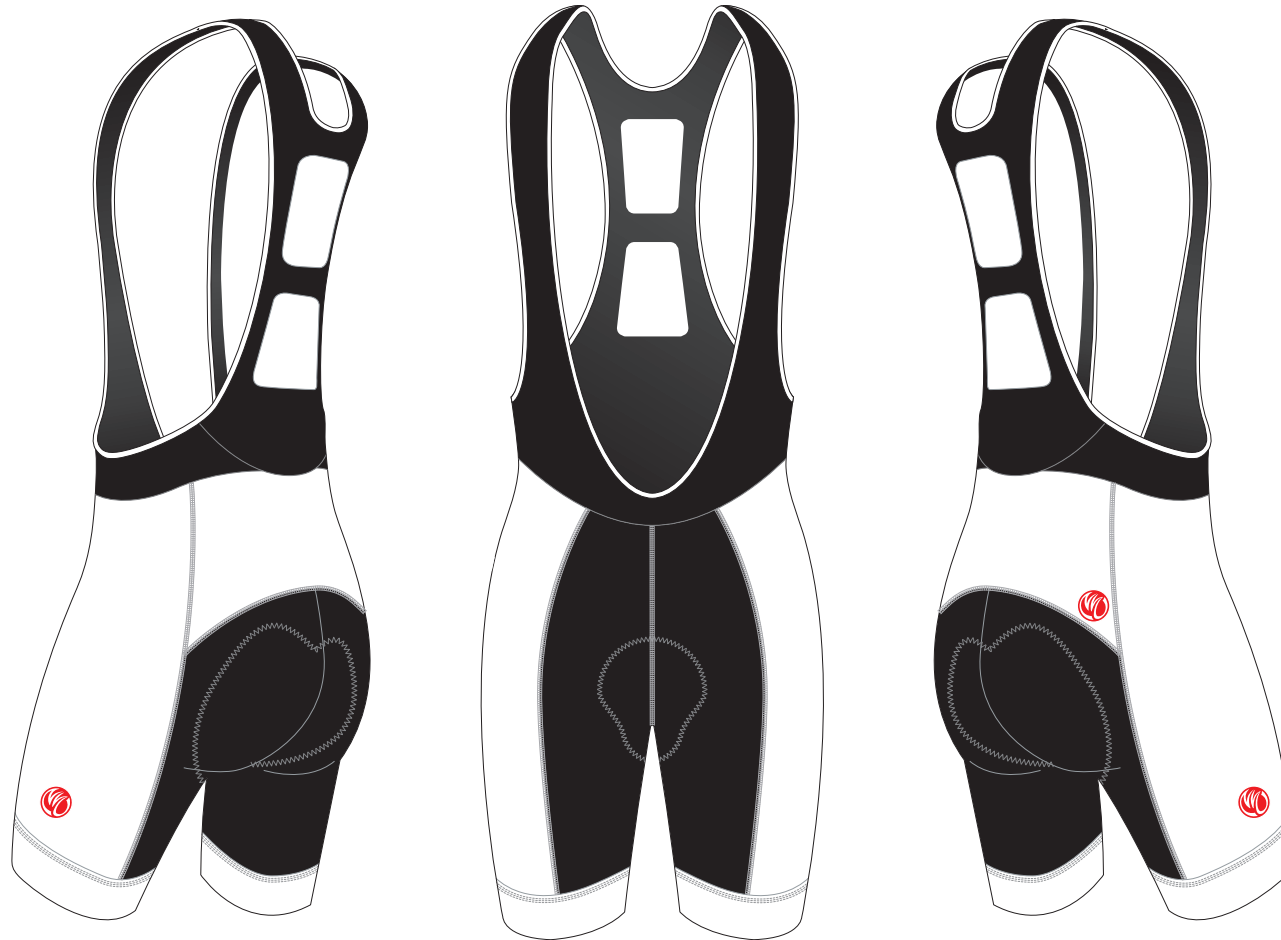
TAH22BW 1/2 Cycling Bib Shorts

BELLO, with 4.5 CM Power Band, WOMEN

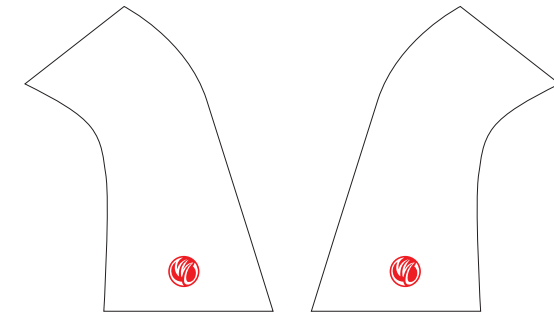
CUSTOMER: _____ VERSION: 1
 DESIGN REQUEST NUMBER: _____ DATE: 00 / 00 / 2014
 www.nimblewear.com sales@nimblewear.com



Please note that NIMBLEWEAR logo must appear on the side panels and on the back panel for all the bottoms. NIMBLEWEAR standard power band for bib shorts is 4.5 CM in width. 7.5 CM power band is available upon customer's request.



REAR PANEL



LEFT SIDE PANEL

RIGHT SIDE PANEL



LEFT BAND



RIGHT BAND

PRE-DYED LYCRA:



PANTONE® Black C



PANTONE® Red 186C



PANTONE® Dark Navy 2767 C



PANTONE® Navy Blue 2735 C



PANTONE® Light Blue 285 C



PANTONE® Cool Grey 11C



PANTONE® Green 340 C

COLORS USED:



OTHER OPTIONS FOR LEG HEM:



With Silicon Gripper



+ \$5
With 7.5 CM Power Band

FLATLOCK COLOR OPTIONS:



* This template can be edited with vector graphic software programs. Adobe Illustrator CS5 is recommended.
 * All logos must be provided in vector format and all fonts must be converted into outline.
 * The color on-screen may vary from the finished product. To confirm the color please refer to PANTONE® MATCHING SYSTEM FORMULA GUIDE Solid Coated.
 * We will try the best to match the PANTONE® colors when printing, but exact matching cannot be guaranteed, due to variation in temperature, humidity and materials.

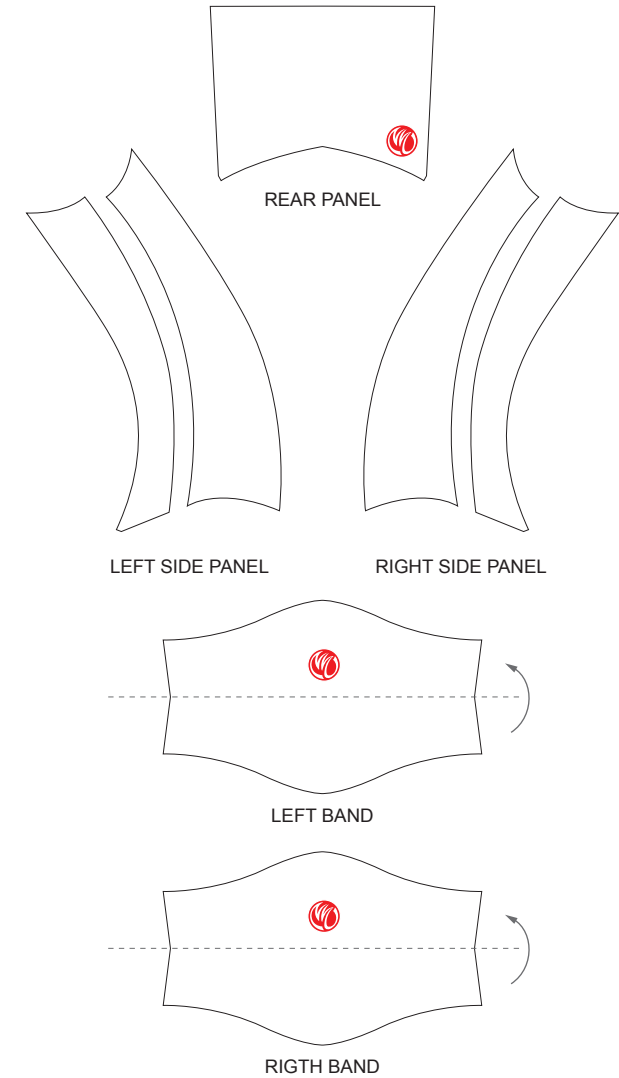
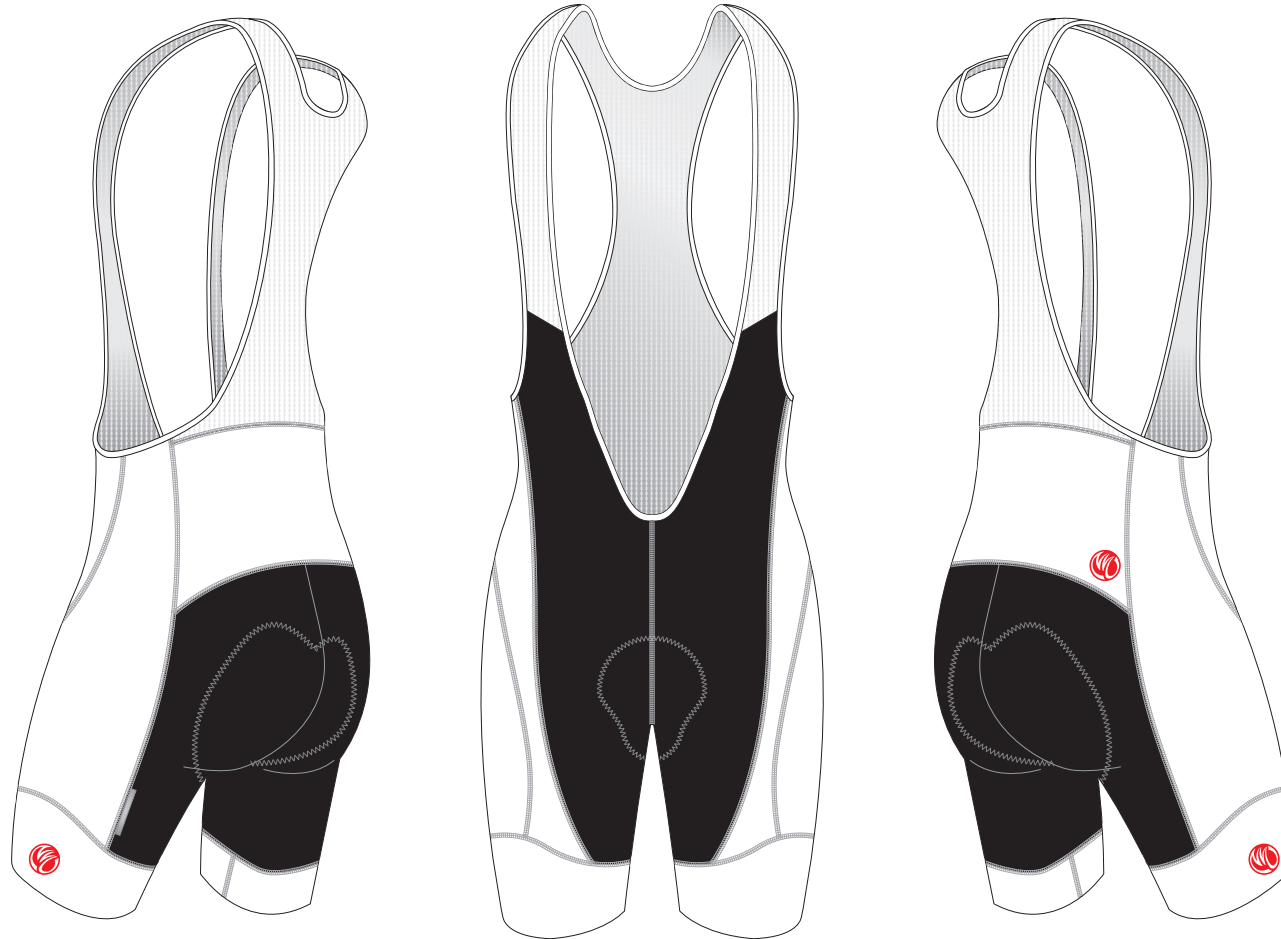
TAH23C 1/2 Cycling Bib Shorts

PRO Cutting, FORZA, with Double Lycra Power Band

CUSTOMER: _____ VERSION: 1
 DESIGN REQUEST NUMBER: _____ DATE: 00 / 00 / 2014
 www.nimblewear.com sales@nimblewear.com



Please note that NIMBLEWEAR logo must appear on the side panels and on the back panel for all the bottoms. NIMBLEWEAR standard power band for bib shorts is 4.5 CM in width. 7.5 CM power band is available upon customer's request.



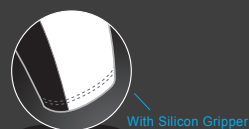
PRE-DYED LYCRA:



COLORS USED:



OTHER OPTIONS FOR LEG HEM:



FLATLOCK COLOR OPTIONS:



- This template can be edited with vector graphic software programs. Adobe Illustrator CS5 is recommended.
- All logos must be provided in vector format and all fonts must be converted into outline.
- The color on-screen may vary from the finished product. To confirm the color please refer to PANTONE® MATCHING SYSTEM FORMULA GUIDE Solid Coated.
- We will try the best to match the PANTONE® colors when printing, but exact matching cannot be guaranteed, due to variation in temperature, humidity and materials.

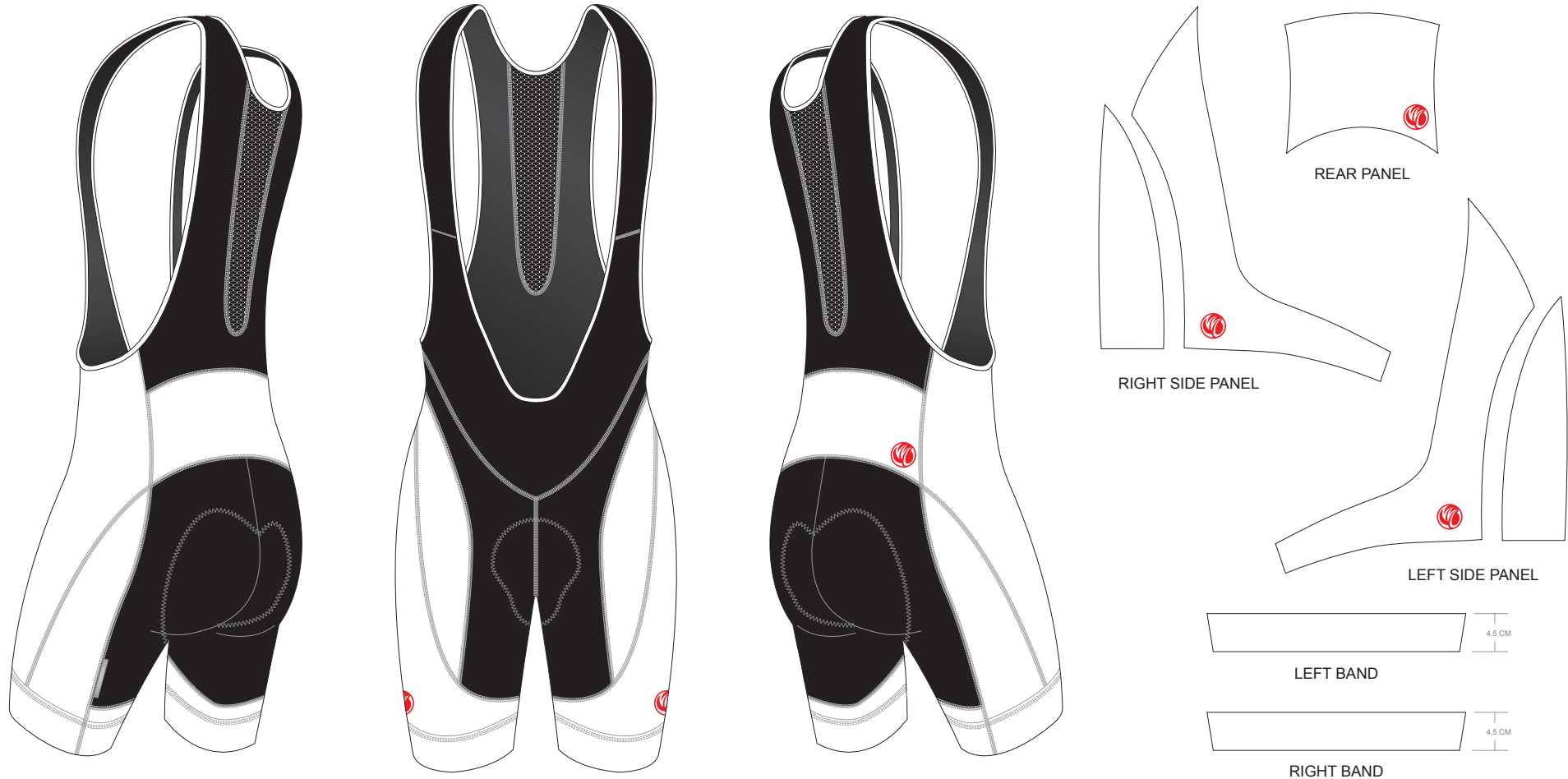
TAH24C 1/2 Cycling Bib Shorts

PRO Cutting, SPRINT, with 4.5 CM Power Band

CUSTOMER: _____ VERSION: 1
 DESIGN REQUEST NUMBER: _____ DATE: 00 / 00 / 2014
 www.nimblewear.com sales@nimblewear.com



Please note that NIMBLEWEAR logo must appear on the side panels and on the back panel for all the bottoms. NIMBLEWEAR standard power band for bib shorts is 4.5 CM in width. 7.5 CM power band is available upon customer's request.



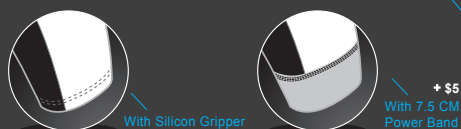
PRE-DYED LYCRA:



COLORS USED:



OTHER OPTIONS FOR LEG HEM:



FLATLOCK COLOR OPTIONS:



* This template can be edited with vector graphic software programs. Adobe Illustrator CS5 is recommended.
 * All logos must be provided in vector format and all fonts must be converted into outline.
 * The color on-screen may vary from the finished product. To confirm the color please refer to PANTONE[®] MATCHING SYSTEM FORMULA GUIDE Solid Coated.
 * We will try the best to match the PANTONE[®] colors when printing, but exact matching cannot be guaranteed, due to variation in temperature, humidity and materials.

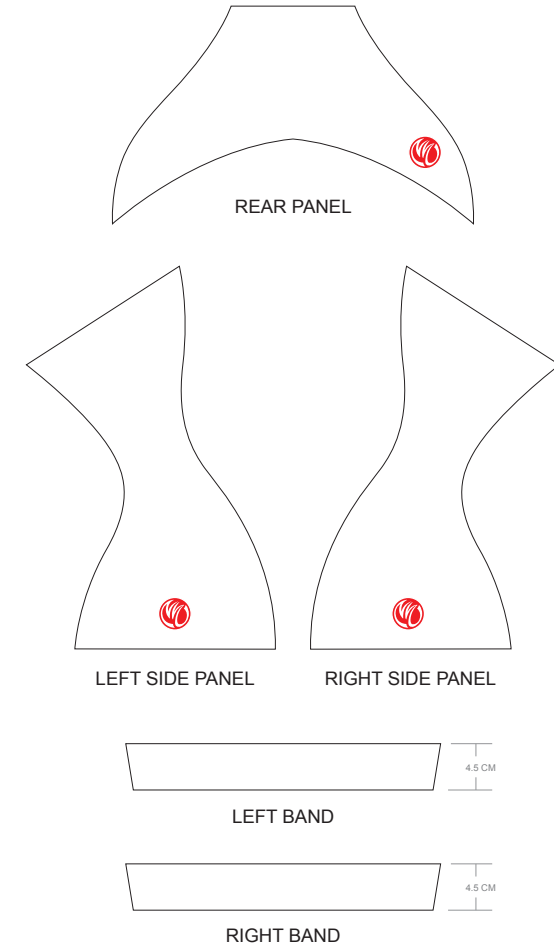
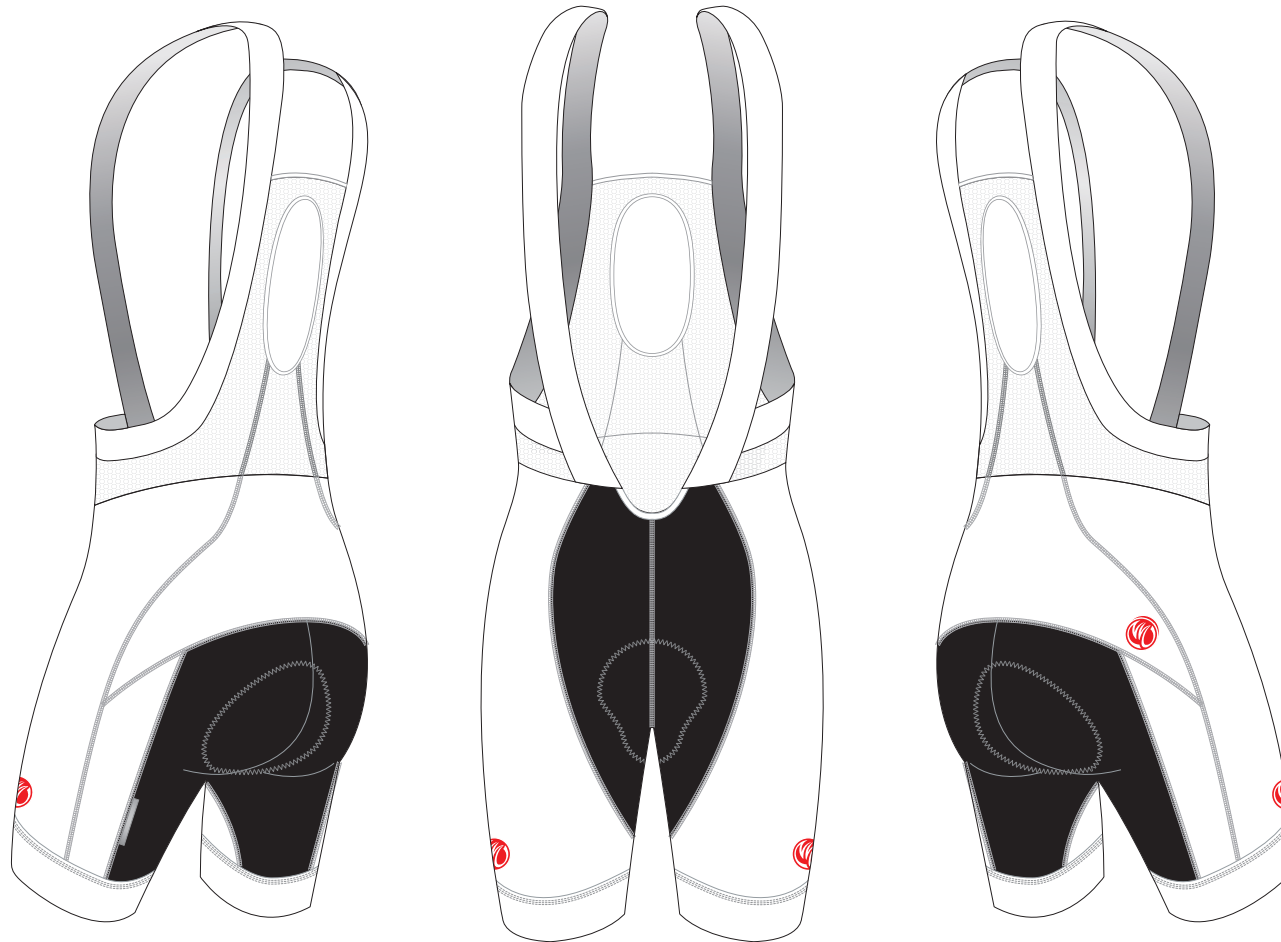
TAH25C 1/2 Cycling Bib Shorts

PRO Cutting, SKIN FIT, with 4.5 CM Power Band

CUSTOMER: _____ VERSION: 1
 DESIGN REQUEST NUMBER: _____ DATE: 00 / 00 / 2014
 www.nimblewear.com sales@nimblewear.com



Please note that NIMBLEWEAR logo must appear on the side panels and on the back panel for all the bottoms. NIMBLEWEAR standard power band for bib shorts is 4.5 CM in width. 7.5 CM power band is available upon customer's request.



PRE-DYED LYCRA:



PANTONE® Black C



PANTONE® Red 186C



PANTONE® Dark Navy 2767 C



PANTONE® Navy Blue 2735 C



PANTONE® Light Blue 285 C



PANTONE® Cool Grey 11C



PANTONE® Green 340 C

COLORS USED:



OTHER OPTIONS FOR LEG HEM:



With Silicon Gripper



+ \$5
With 7.5 CM Power Band

FLATLOCK COLOR OPTIONS:



* This template can be edited with vector graphic software programs. Adobe Illustrator CS5 is recommended.
 * All logos must be provided in vector format and all fonts must be converted into outline.
 * The color on-screen may vary from the finished product. To confirm the color please refer to PANTONE® MATCHING SYSTEM FORMULA GUIDE Solid Coated.
 * We will try the best to match the PANTONE® colors when printing, but exact matching cannot be guaranteed, due to variation in temperature, humidity and materials.