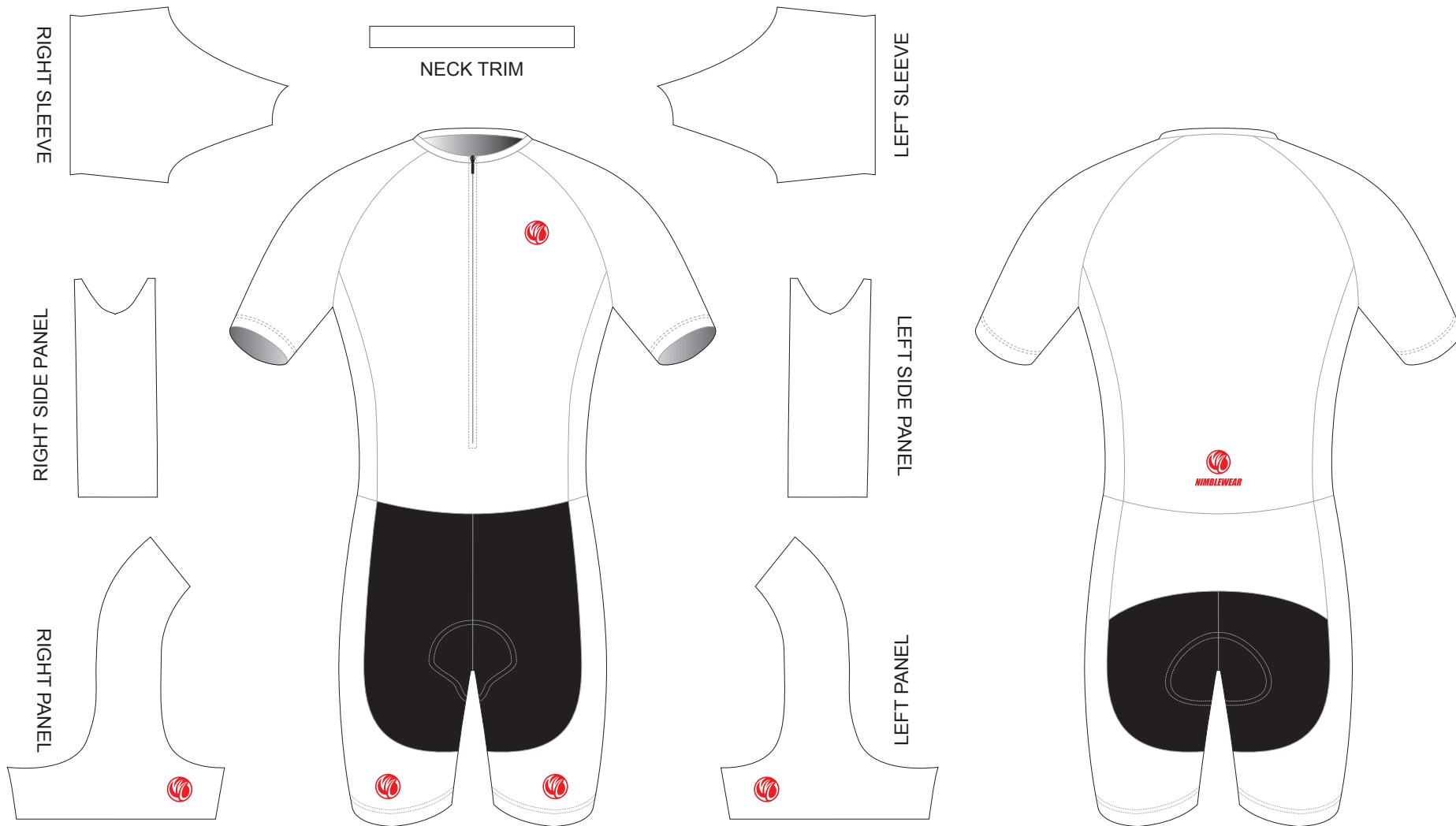


AMA01 Short Sleeve Cycling Skinsuit

T Style; without Collar

www.nimblewear.com
www.nimblewear.net



PRE-DYED LYCRA:



PANTONE® Black C



PANTONE® Red 186C



PANTONE® Dark Navy 2767 C



PANTONE® Navy Blue 2738 C



PANTONE® Cool Gray 11C



PANTONE® Green 340 C

COLORS USED:



CUSTOMER: _____

DESIGN REQUEST NUMBER: _____

VERSION: 1

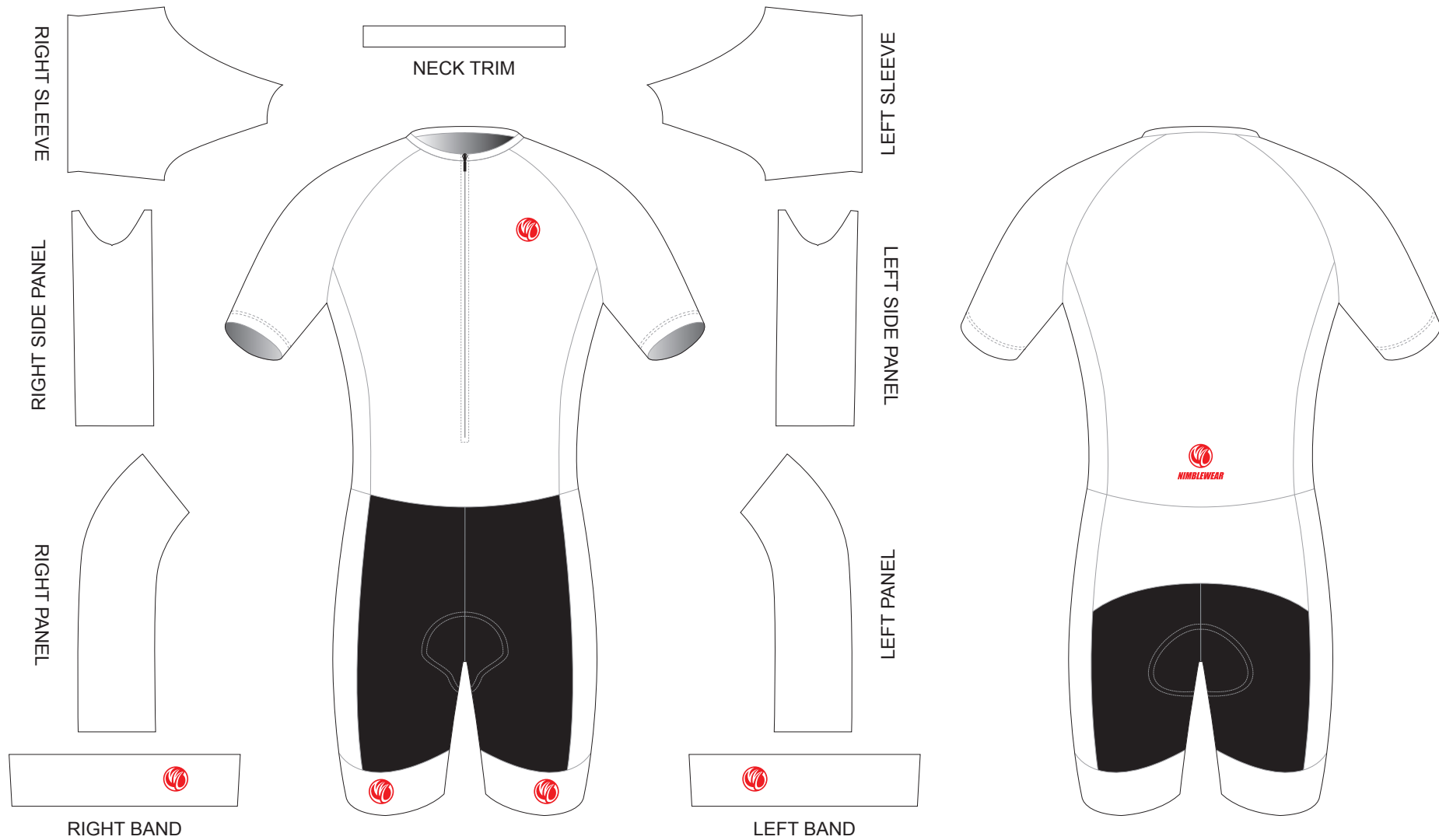
DATE: 00 / 00 / 2013

- This template can be edited with vector graphic software programs. Adobe Illustrator CS5 is recommended.
- All logos must be provided in vector format and all fonts must be converted into outline.
- The color on-screen may vary from the finished product. To confirm the color please refer to PANTONE® MATCHING SYSTEM FORMULA GUIDE Solid Coated.
- We will try the best to match the PANTONE® colors when printing, but exact matching cannot be guaranteed, due to variation in temperature, humidity and materials.

AMA02 Short Sleeve Cycling Skinsuit

Wide Band Style; without Collar

www.nimblewear.com
www.nimblewear.net



PRE-DYED LYCRA:



PANTONE® Black C



PANTONE® Red 186C



PANTONE® Dark Navy 2767 C



PANTONE® Navy Blue 2738 C



PANTONE® Cool Gray 11C



PANTONE® Green 340 C

COLORS USED:



CUSTOMER: _____

DESIGN REQUEST NUMBER: _____

VERSION: 1

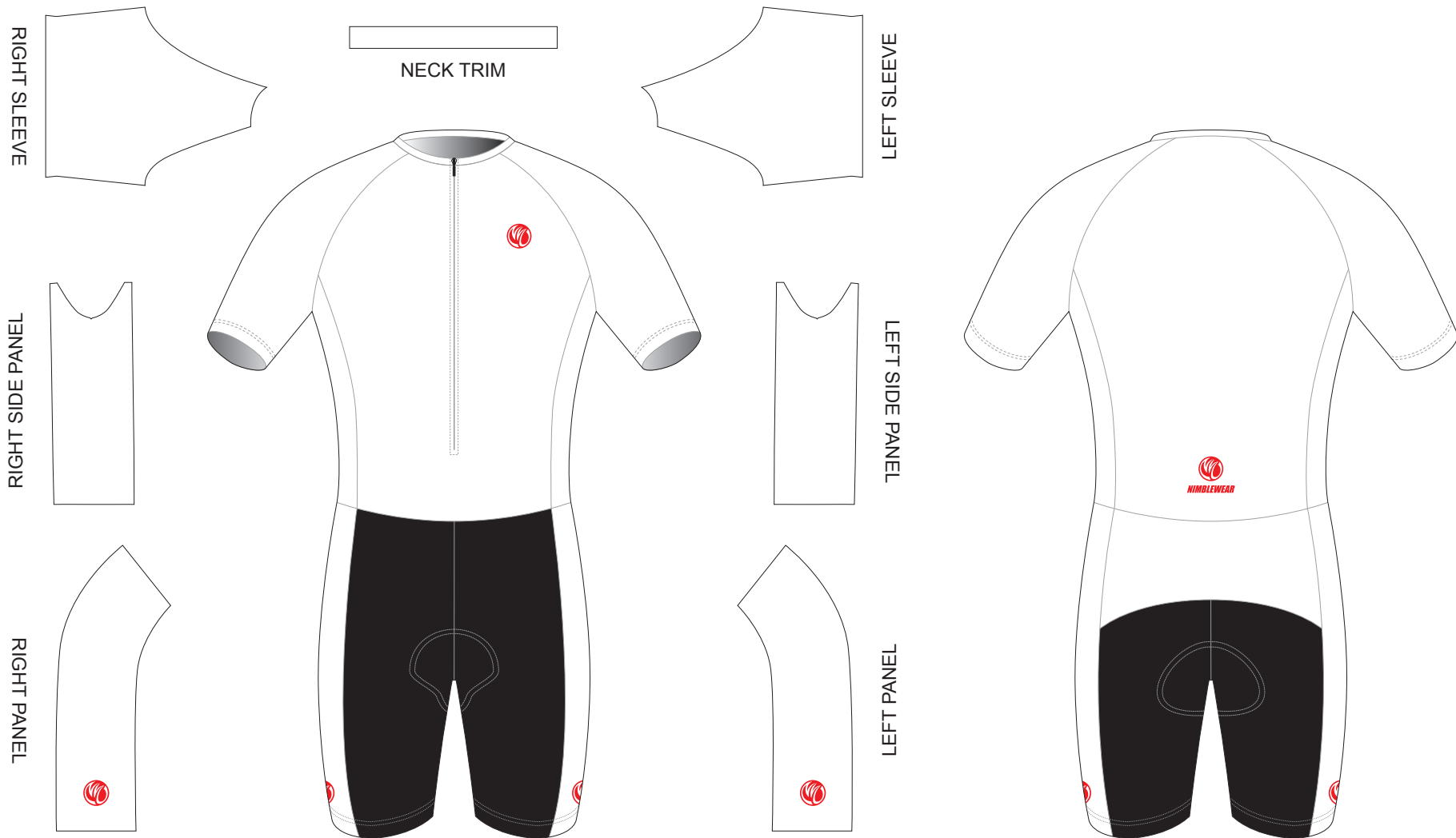
DATE: 00 / 00 / 2013

- This template can be edited with vector graphic software programs. Adobe Illustrator CS5 is recommended.
- All logos must be provided in vector format and all fonts must be converted into outline.
- The color on-screen may vary from the finished product. To confirm the color please refer to PANTONE® MATCHING SYSTEM FORMULA GUIDE Solid Coated.
- We will try the best to match the PANTONE® colors when printing, but exact matching cannot be guaranteed, due to variation in temperature, humidity and materials.

AMA03 Short Sleeve Cycling Skinsuit

C Style; without Collar

www.nimblewear.com
www.nimblewear.net



PRE-DYED LYCRA:



PANTONE® Black C



PANTONE® Red 186C



PANTONE® Dark Navy 2767 C



PANTONE® Navy Blue 2738 C



PANTONE® Cool Gray 11C



PANTONE® Green 340 C

COLORS USED:



CUSTOMER: _____

DESIGN REQUEST NUMBER: _____

VERSION: 1

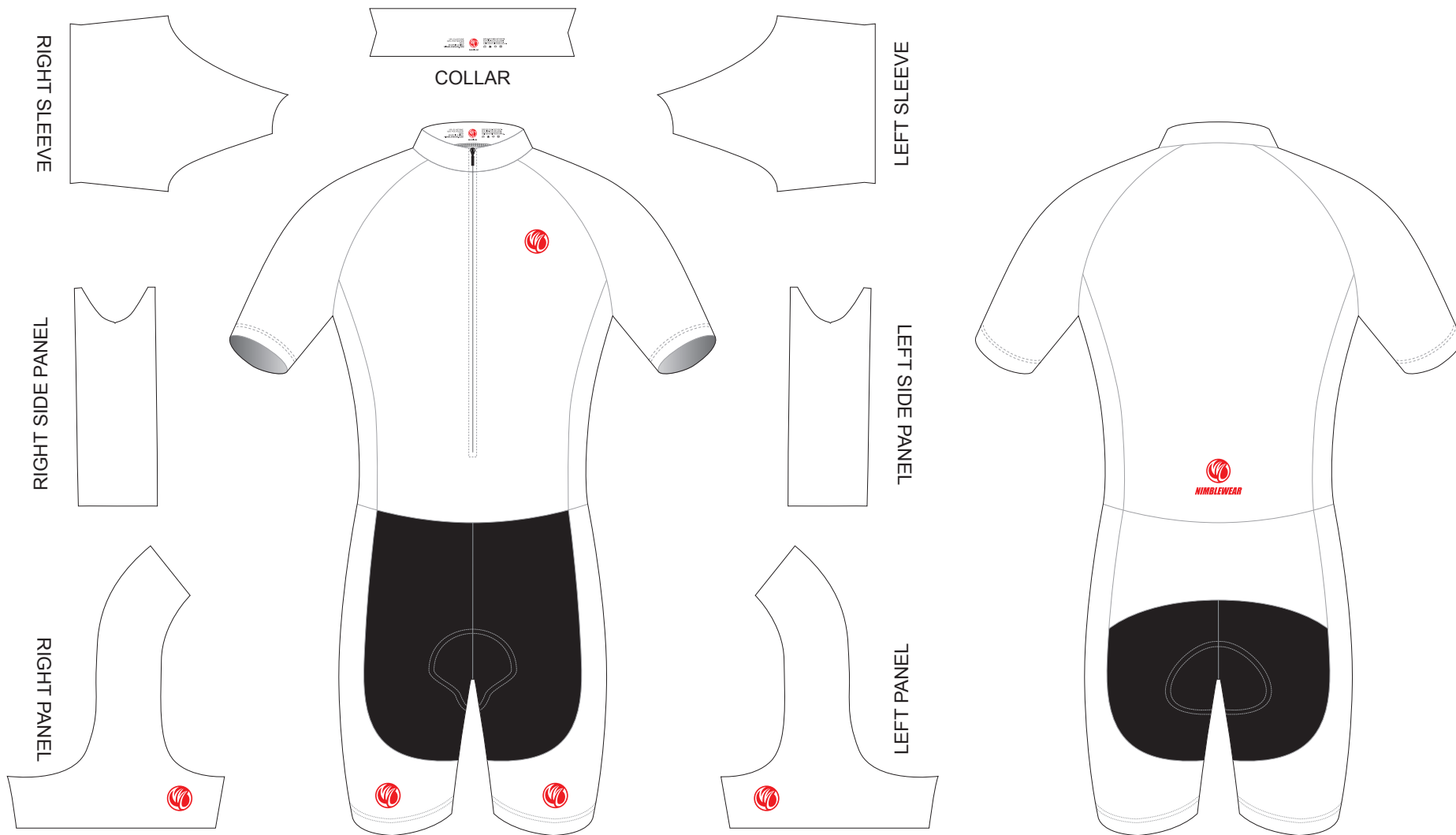
DATE: 00 / 00 / 2013

- This template can be edited with vector graphic software programs. Adobe Illustrator CS5 is recommended.
- All logos must be provided in vector format and all fonts must be converted into outline.
- The color on-screen may vary from the finished product. To confirm the color please refer to PANTONE® MATCHING SYSTEM FORMULA GUIDE Solid Coated.
- We will try the best to match the PANTONE® colors when printing, but exact matching cannot be guaranteed, due to variation in temperature, humidity and materials.

AMA04 Short Sleeve Cycling Skinsuit

T Style; with Collar; with Short Side Panels

www.nimblewear.com
www.nimblewear.net



PRE-DYED LYCRA:



PANTONE® Black C



PANTONE® Red 186C



PANTONE® Dark Navy 2767 C



PANTONE® Navy Blue 2738 C



PANTONE® Cool Gray 11C



PANTONE® Green 340 C

COLORS USED:



CUSTOMER: _____

DESIGN REQUEST NUMBER: _____

VERSION: 1

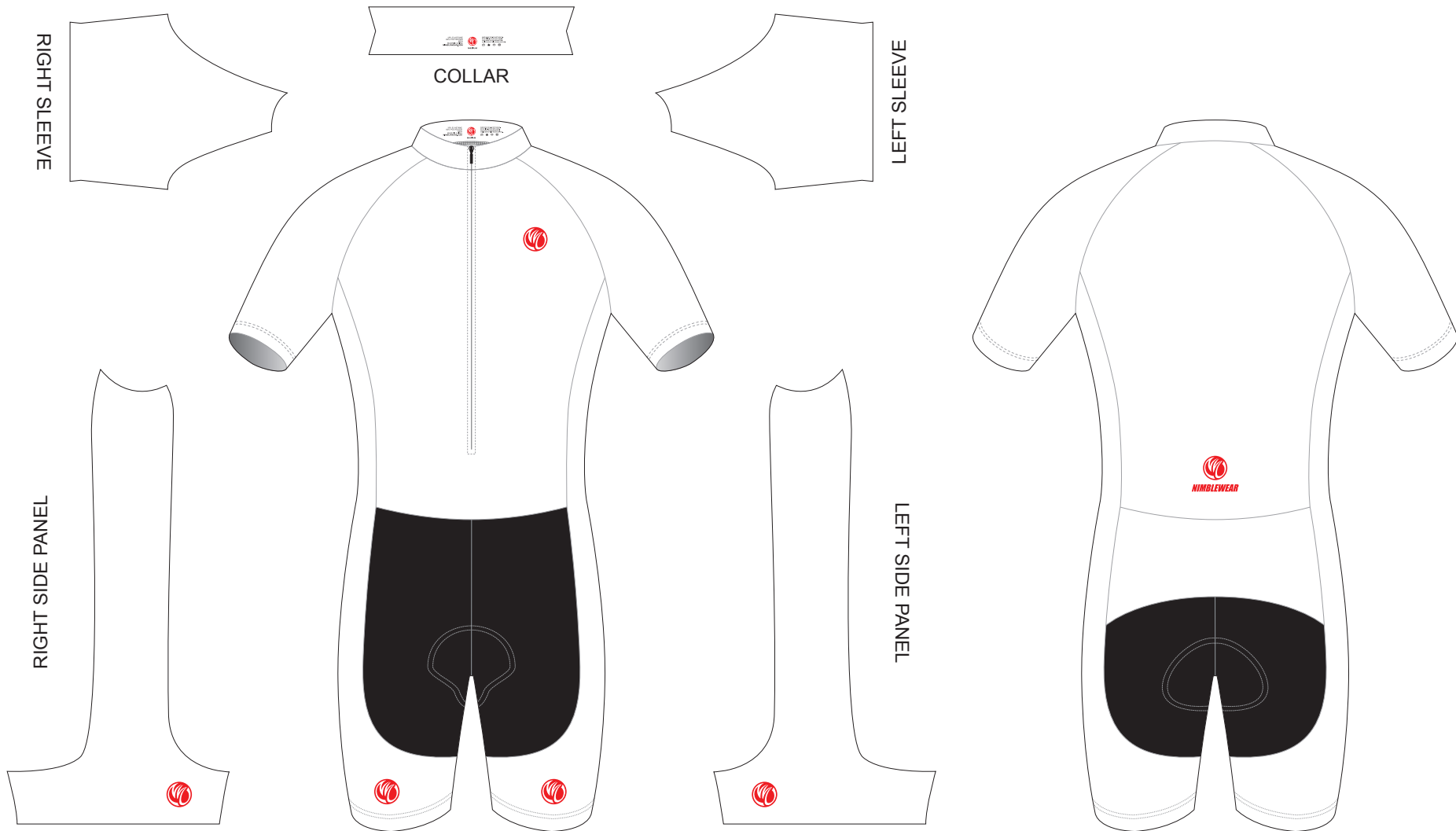
DATE: 00 / 00 / 2013

- This template can be edited with vector graphic software programs. Adobe Illustrator CS5 is recommended.
- All logos must be provided in vector format and all fonts must be converted into outline.
- The color on-screen may vary from the finished product. To confirm the color please refer to PANTONE® MATCHING SYSTEM FORMULA GUIDE Solid Coated.
- We will try the best to match the PANTONE® colors when printing, but exact matching cannot be guaranteed, due to variation in temperature, humidity and materials.

AMA05 Short Sleeve Cycling Skinsuit

T Style; with Collar; with Long Side Panels

www.nimblewear.com
www.nimblewear.net



PRE-DYED
LYCRA:



PANTONE®
Black C



PANTONE®
Red 186C



PANTONE®
Dark Navy 2767 C



PANTONE®
Navy Blue 2738 C



PANTONE®
Cool Gray 11C



PANTONE®
Green 340 C

COLORS USED:



CUSTOMER: _____

DESIGN REQUEST NUMBER: _____

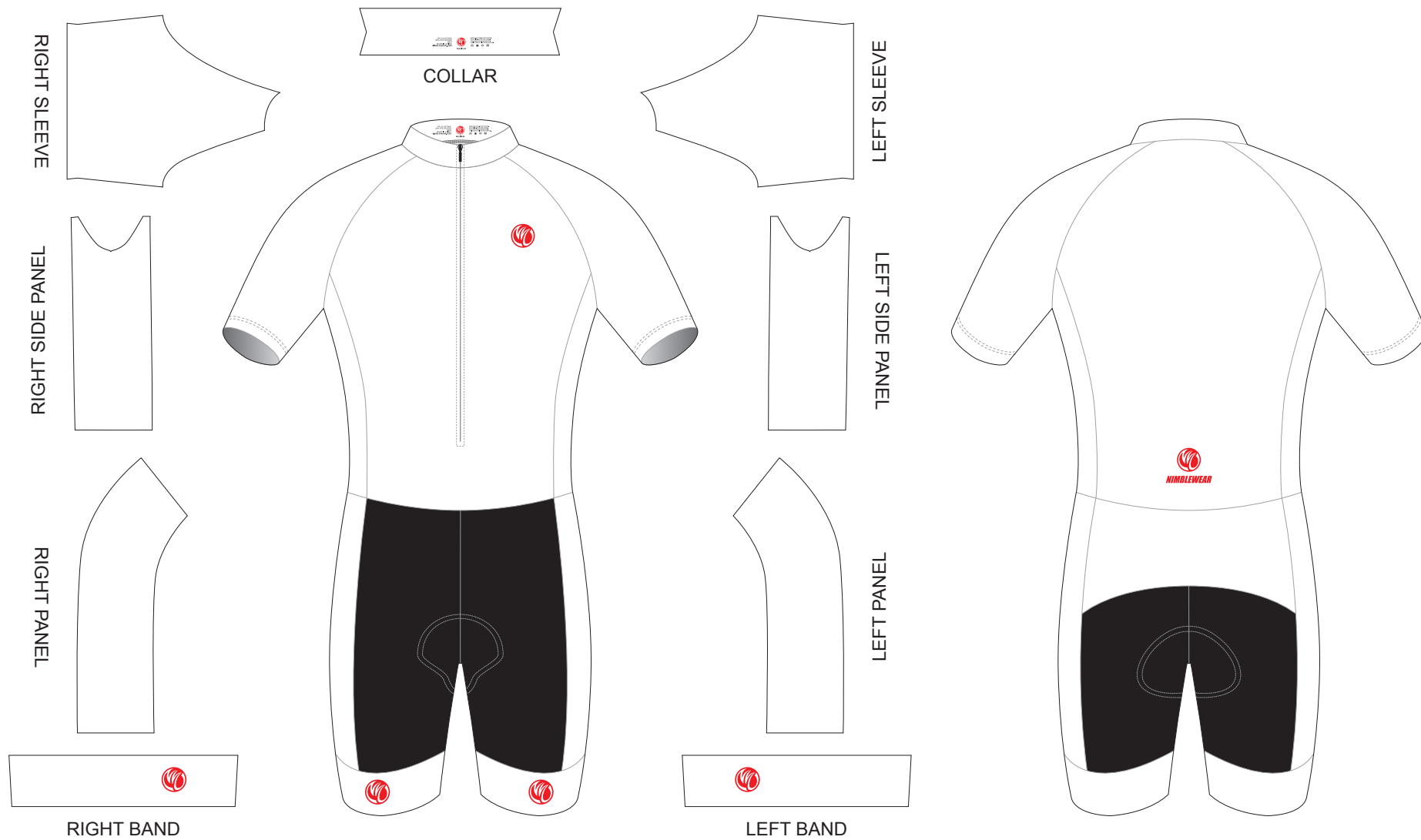
VERSION: 1 **DATE: 00 / 00 / 2013**

- This template can be edited with vector graphic software programs. Adobe Illustrator CS5 is recommended.
- All logos must be provided in vector format and all fonts must be converted into outline.
- The color on-screen may vary from the finished product. To confirm the color please refer to PANTONE® MATCHING SYSTEM FORMULA GUIDE Solid Coated.
- We will try the best to match the PANTONE® colors when printing, but exact matching cannot be guaranteed, due to variation in temperature, humidity and materials.

AMA06 Short Sleeve Cycling Skinsuit

Wide Band Style; with Collar; with Short Side Panels

www.nimblewear.com
www.nimblewear.net



PRE-DYED LYCRA:



PANTONE® Black C



PANTONE® Red 186C



PANTONE® Dark Navy 2767 C



PANTONE® Navy Blue 2738 C



PANTONE® Cool Gray 11C



PANTONE® Green 340 C

COLORS USED:



CUSTOMER: _____

DESIGN REQUEST NUMBER: _____

VERSION: 1

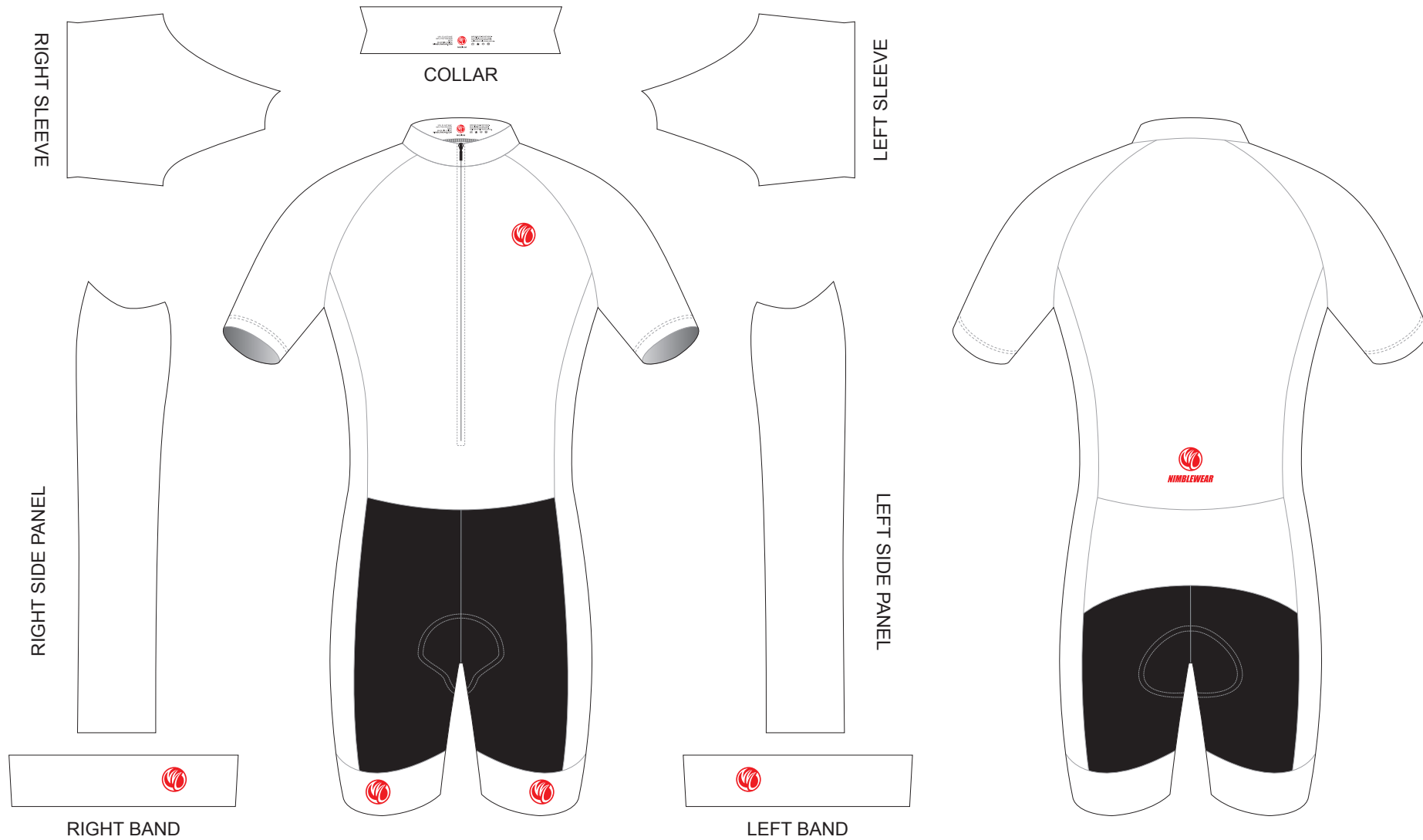
DATE: 00 / 00 / 2013

- This template can be edited with vector graphic software programs. Adobe Illustrator CS5 is recommended.
- All logos must be provided in vector format and all fonts must be converted into outline.
- The color on-screen may vary from the finished product. To confirm the color please refer to PANTONE® MATCHING SYSTEM FORMULA GUIDE Solid Coated.
- We will try the best to match the PANTONE® colors when printing, but exact matching cannot be guaranteed, due to variation in temperature, humidity and materials.

AMA07 Short Sleeve Cycling Skinsuit

Wide Band Style; with Collar; with Long Side Panels

www.nimblewear.com
www.nimblewear.net



PRE-DYED
LYCRA:



PANTONE®
Black C



PANTONE®
Red 186C



PANTONE®
Dark Navy 2767 C



PANTONE®
Navy Blue 2738 C



PANTONE®
Cool Gray 11C



PANTONE®
Green 340 C

COLORS USED:



CUSTOMER: _____

DESIGN REQUEST NUMBER: _____

VERSION: 1

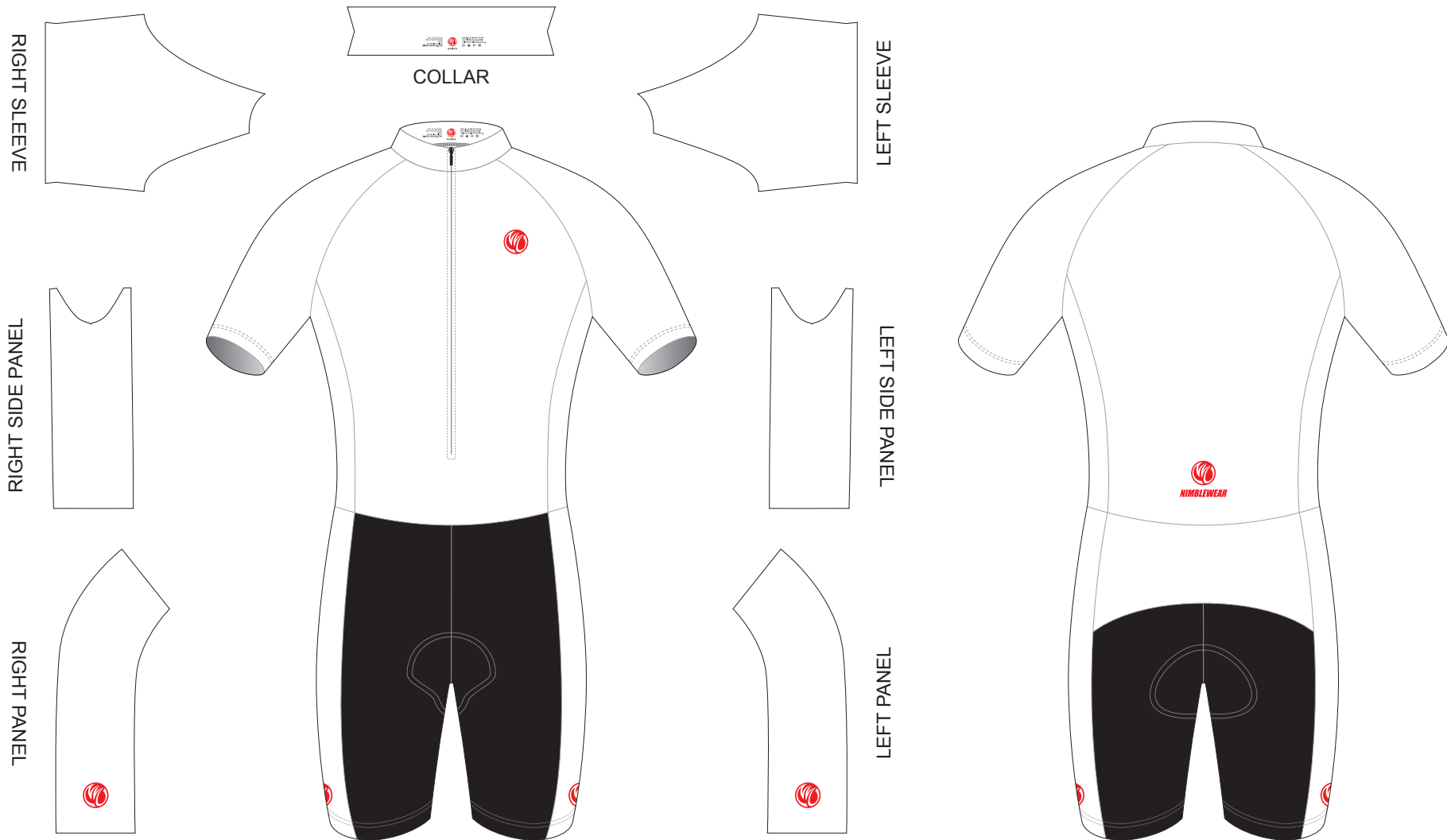
DATE: 00 / 00 / 2013

- This template can be edited with vector graphic software programs. Adobe Illustrator CS5 is recommended.
- All logos must be provided in vector format and all fonts must be converted into outline.
- The color on-screen may vary from the finished product. To confirm the color please refer to PANTONE® MATCHING SYSTEM FORMULA GUIDE Solid Coated.
- We will try the best to match the PANTONE® colors when printing, but exact matching cannot be guaranteed, due to variation in temperature, humidity and materials.

AMA08 Short Sleeve Cycling Skinsuit

C Style; with Collar; with Short Side Panels

www.nimblewear.com
www.nimblewear.net



- PRE-DYED LYCRA:
- PANTONE® Black C
 - PANTONE® Red 186C
 - PANTONE® Dark Navy 2767 C
 - PANTONE® Navy Blue 2738 C
 - PANTONE® Cool Gray 11C
 - PANTONE® Green 340 C

COLORS USED:



CUSTOMER: _____

DESIGN REQUEST NUMBER: _____

VERSION: 1

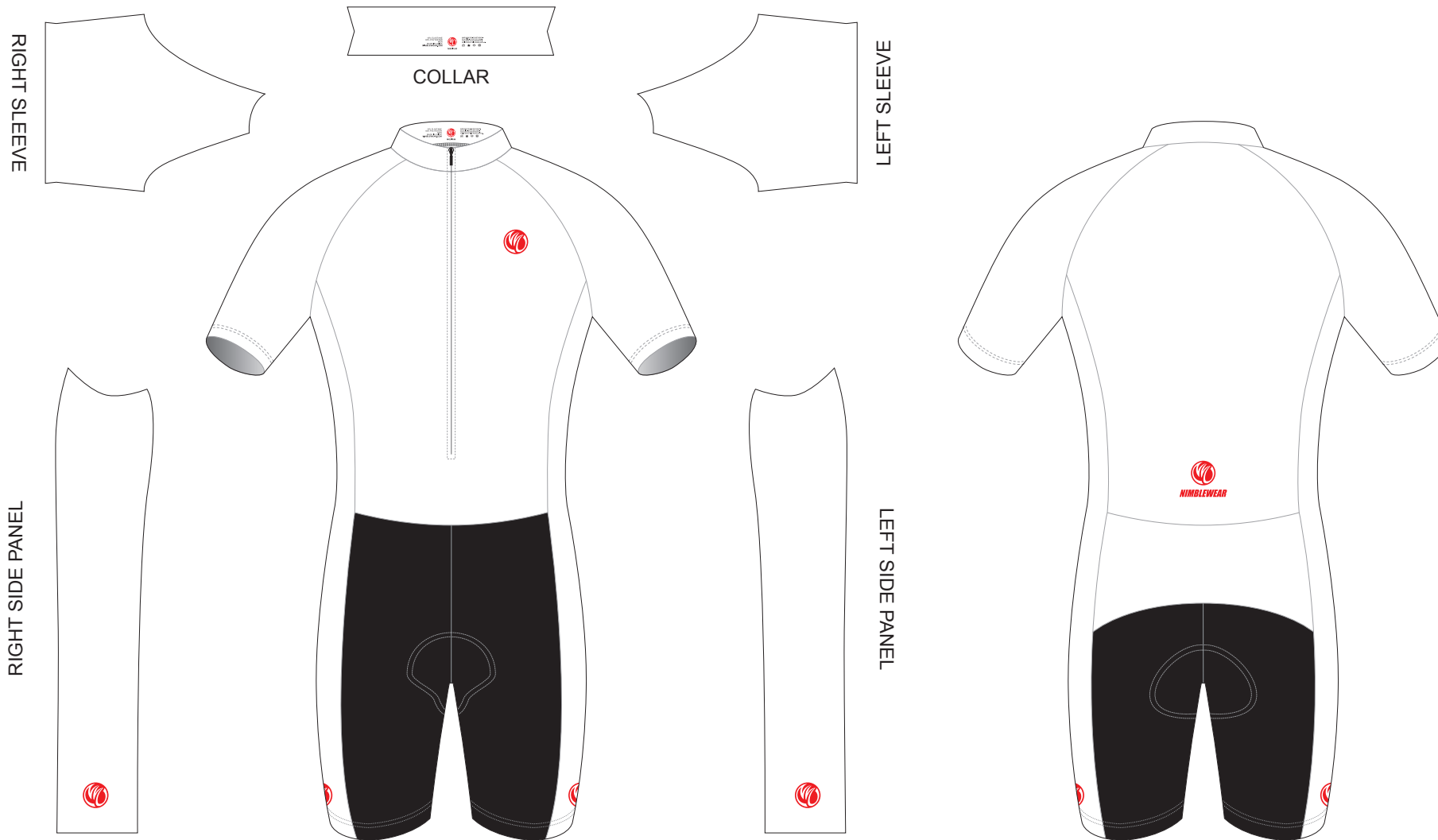
DATE: 00 / 00 / 2013

- This template can be edited with vector graphic software programs. Adobe Illustrator CS5 is recommended.
- All logos must be provided in vector format and all fonts must be converted into outline.
- The color on-screen may vary from the finished product. To confirm the color please refer to PANTONE® MATCHING SYSTEM FORMULA GUIDE Solid Coated.
- We will try the best to match the PANTONE® colors when printing, but exact matching cannot be guaranteed, due to variation in temperature, humidity and materials.

AMA09 Short Sleeve Cycling Skinsuit

C Style; with Collar; with Long Side Panels

www.nimblewear.com
www.nimblewear.net



- PRE-DYED LYCRA:
- PANTONE® Black C
 - PANTONE® Red 186C
 - PANTONE® Dark Navy 2767 C
 - PANTONE® Navy Blue 2738 C
 - PANTONE® Cool Gray 11C
 - PANTONE® Green 340 C

COLORS USED:



CUSTOMER: _____

DESIGN REQUEST NUMBER: _____

VERSION: 1

DATE: 00 / 00 / 2013

- This template can be edited with vector graphic software programs. Adobe Illustrator CS5 is recommended.
- All logos must be provided in vector format and all fonts must be converted into outline.
- The color on-screen may vary from the finished product. To confirm the color please refer to PANTONE® MATCHING SYSTEM FORMULA GUIDE Solid Coated.
- We will try the best to match the PANTONE® colors when printing, but exact matching cannot be guaranteed, due to variation in temperature, humidity and materials.