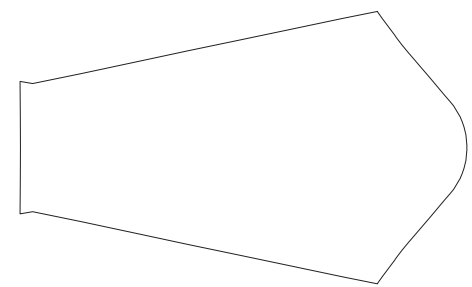


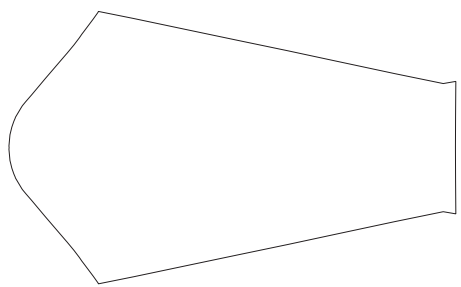
# DBA01 Long Sleeve Running Shirt

Set-in Sleeve, Crew Neck

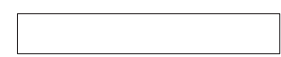
www.nimblewear.com  
www.nimblewear.net



RIGHT SLEEVE



LEFT SLEEVE



NECK TRIM



FRONT



BACK

**COLORS USED:**



**CUSTOMER:** \_\_\_\_\_

**DESIGN REQUEST NUMBER:** \_\_\_\_\_

**VERSION:** 1

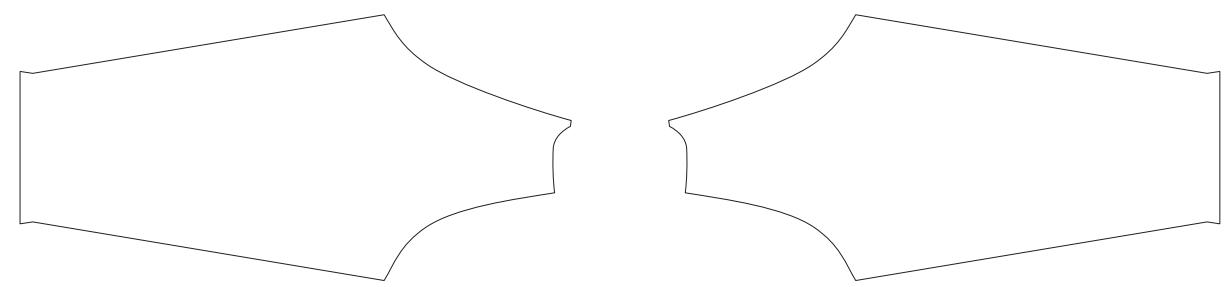
**DATE:** 00 / 00 / 2013

• This template can be edited with vector graphic software programs. Adobe Illustrator CS5 is recommended.  
• All logos must be provided in vector format and all fonts must be converted into outline.  
• The color on-screen may vary from the finished product. To confirm the color please refer to PANTONE® MATCHING SYSTEM FORMULA GUIDE Solid Coated.  
• We will try the best to match the PANTONE® colors when printing, but exact matching cannot be guaranteed, due to variation in temperature, humidity and materials.

# DBA02 Long Sleeve Running Shirt

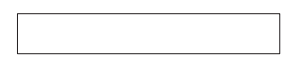
Raglan Sleeve, Crew Neck

www.nimblewear.com  
www.nimblewear.net

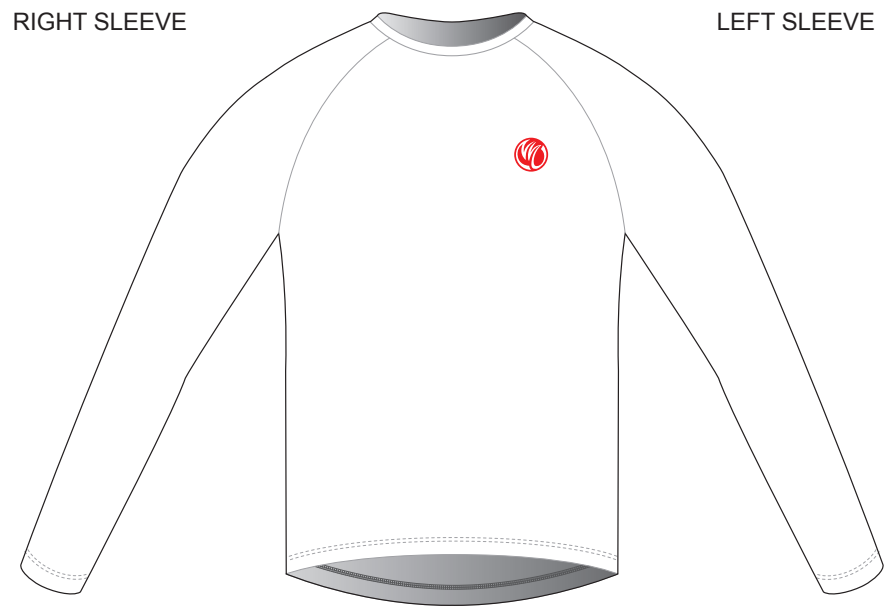


RIGHT SLEEVE

LEFT SLEEVE



NECK TRIM



FRONT



BACK

**COLORS USED:**



**CUSTOMER:** \_\_\_\_\_

**DESIGN REQUEST NUMBER:** \_\_\_\_\_

**VERSION:** 1

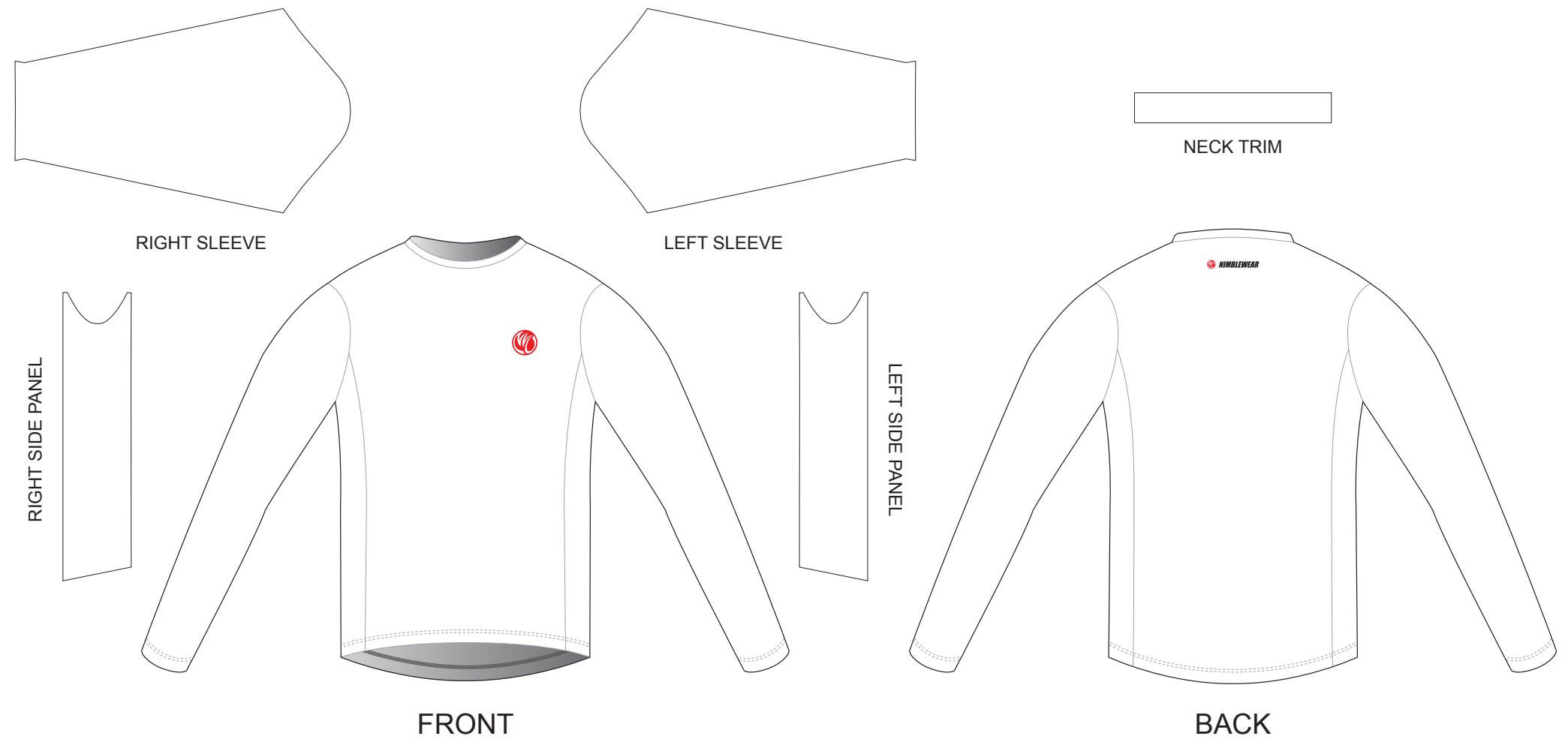
**DATE:** 00 / 00 / 2013

• This template can be edited with vector graphic software programs. Adobe Illustrator CS5 is recommended.  
• All logos must be provided in vector format and all fonts must be converted into outline.  
• The color on-screen may vary from the finished product. To confirm the color please refer to PANTONE® MATCHING SYSTEM FORMULA GUIDE Solid Coated.  
• We will try the best to match the PANTONE® colors when printing, but exact matching cannot be guaranteed, due to variation in temperature, humidity and materials.

# DBA03 Long Sleeve Running Shirt

Set-in Sleeve, Crew Neck; With Side Panel

www.nimblewear.com  
www.nimblewear.net



**COLORS USED:**



**CUSTOMER:** \_\_\_\_\_

**DESIGN REQUEST NUMBER:** \_\_\_\_\_

**VERSION:** 1

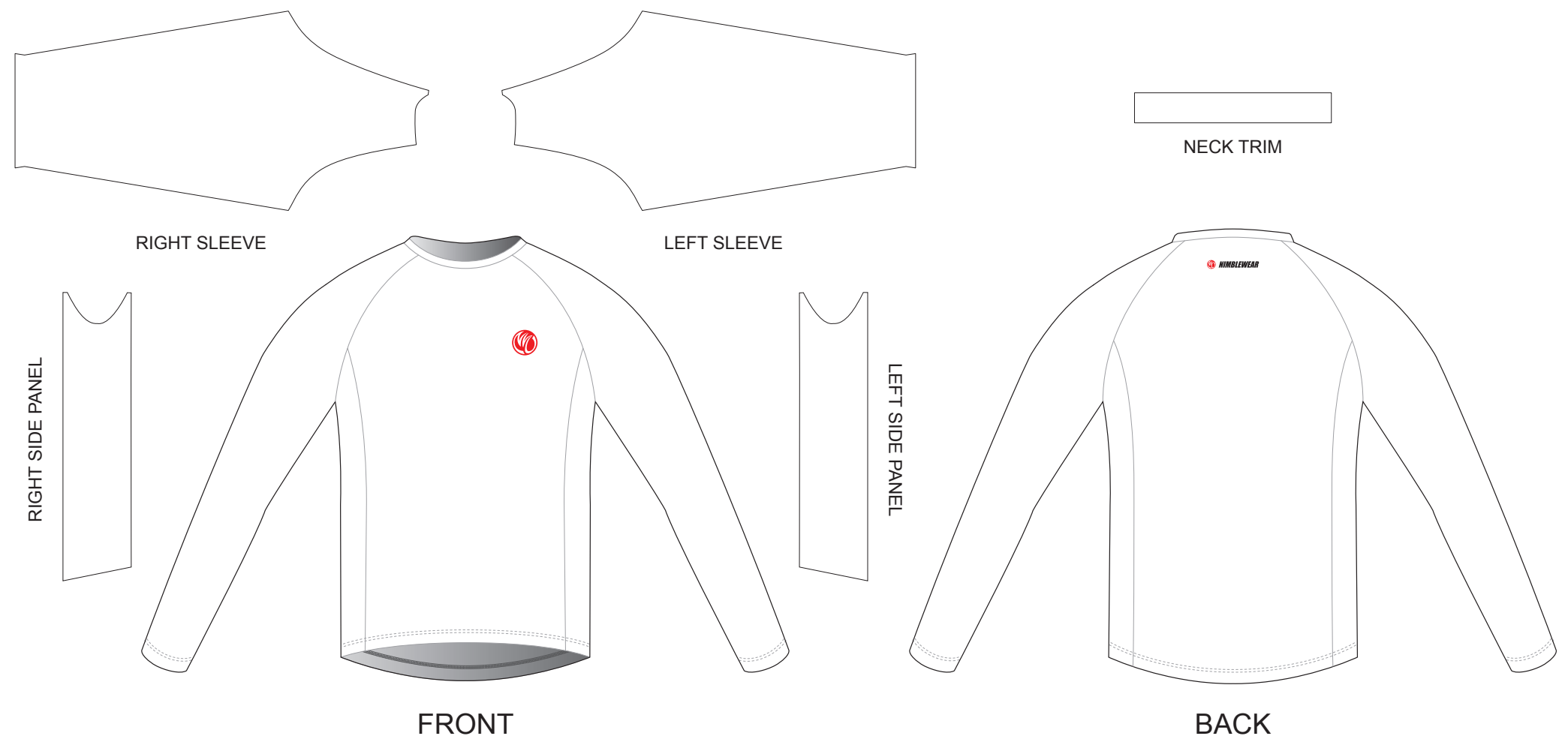
**DATE:** 00 / 00 / 2013

• This template can be edited with vector graphic software programs. Adobe Illustrator CS5 is recommended.  
• All logos must be provided in vector format and all fonts must be converted into outline.  
• The color on-screen may vary from the finished product. To confirm the color please refer to PANTONE® MATCHING SYSTEM FORMULA GUIDE Solid Coated.  
• We will try the best to match the PANTONE® colors when printing, but exact matching cannot be guaranteed, due to variation in temperature, humidity and materials.

# DBA04 Long Sleeve Running Shirt

Raglan Sleeve, Crew Neck, with Side Panels

www.nimblewear.com  
www.nimblewear.net



**COLORS USED:**



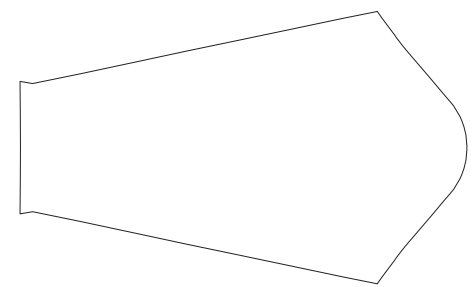
**CUSTOMER:** \_\_\_\_\_  
**DESIGN REQUEST NUMBER:** \_\_\_\_\_  
**VERSION:** 1  
**DATE:** 00 / 00 / 2013

• This template can be edited with vector graphic software programs. Adobe Illustrator CS5 is recommended.  
 • All logos must be provided in vector format and all fonts must be converted into outline.  
 • The color on-screen may vary from the finished product. To confirm the color please refer to PANTONE® MATCHING SYSTEM FORMULA GUIDE Solid Coated.  
 • We will try the best to match the PANTONE® colors when printing, but exact matching cannot be guaranteed, due to variation in temperature, humidity and materials.

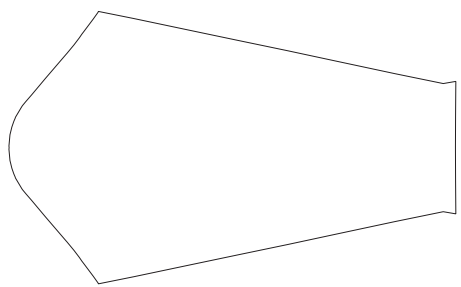
# DBA05 Long Sleeve Running Shirt

Women, Set-in Sleeve, Crew Neck

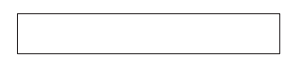
www.nimblewear.com  
www.nimblewear.net



RIGHT SLEEVE



LEFT SLEEVE



NECK TRIM



FRONT



BACK

**COLORS USED:**



**CUSTOMER:** \_\_\_\_\_

**DESIGN REQUEST NUMBER:** \_\_\_\_\_

**VERSION:** 1

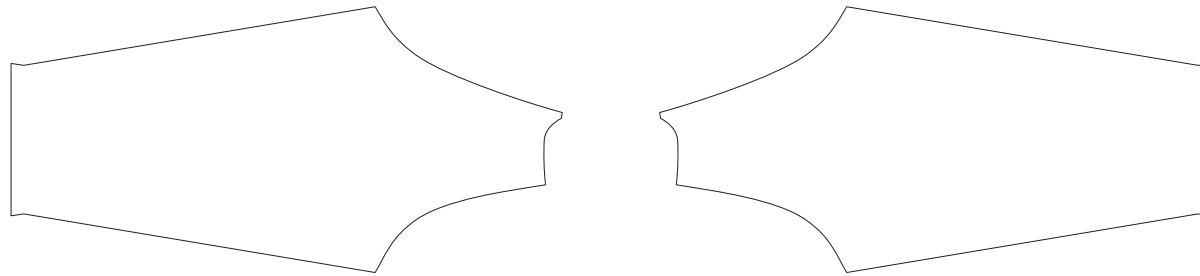
**DATE:** 00 / 00 / 2013

• This template can be edited with vector graphic software programs. Adobe Illustrator CS5 is recommended.  
• All logos must be provided in vector format and all fonts must be converted into outline.  
• The color on-screen may vary from the finished product. To confirm the color please refer to PANTONE® MATCHING SYSTEM FORMULA GUIDE Solid Coated.  
• We will try the best to match the PANTONE® colors when printing, but exact matching cannot be guaranteed, due to variation in temperature, humidity and materials.

# DBA06 Long Sleeve Running Shirt

Women, Raglan Sleeve, Crew Neck

www.nimblewear.com  
www.nimblewear.net



RIGHT SLEEVE

LEFT SLEEVE



NECK TRIM



FRONT



BACK

**COLORS USED:**



**CUSTOMER:** \_\_\_\_\_

**DESIGN REQUEST NUMBER:** \_\_\_\_\_

**VERSION:** 1

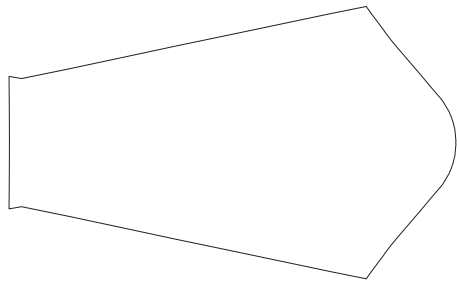
**DATE:** 00 / 00 / 2013

• This template can be edited with vector graphic software programs. Adobe Illustrator CS5 is recommended.  
• All logos must be provided in vector format and all fonts must be converted into outline.  
• The color on-screen may vary from the finished product. To confirm the color please refer to PANTONE® MATCHING SYSTEM FORMULA GUIDE Solid Coated.  
• We will try the best to match the PANTONE® colors when printing, but exact matching cannot be guaranteed, due to variation in temperature, humidity and materials.

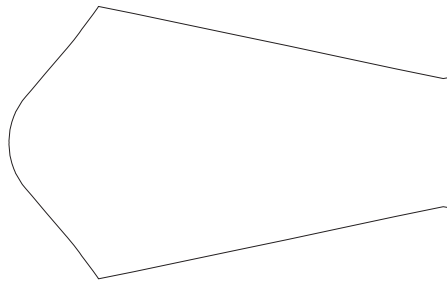
# DBA07 Long Sleeve Running Shirt

Women, Set-in Sleeve, Crew Neck, with Side Panels

www.nimblewear.com  
www.nimblewear.net



RIGHT SLEEVE



LEFT SLEEVE



NECK TRIM



RIGHT SIDE PANEL



FRONT



LEFT SIDE PANEL



BACK

**COLORS USED:**



**CUSTOMER:** \_\_\_\_\_

**DESIGN REQUEST NUMBER:** \_\_\_\_\_

**VERSION:** 1

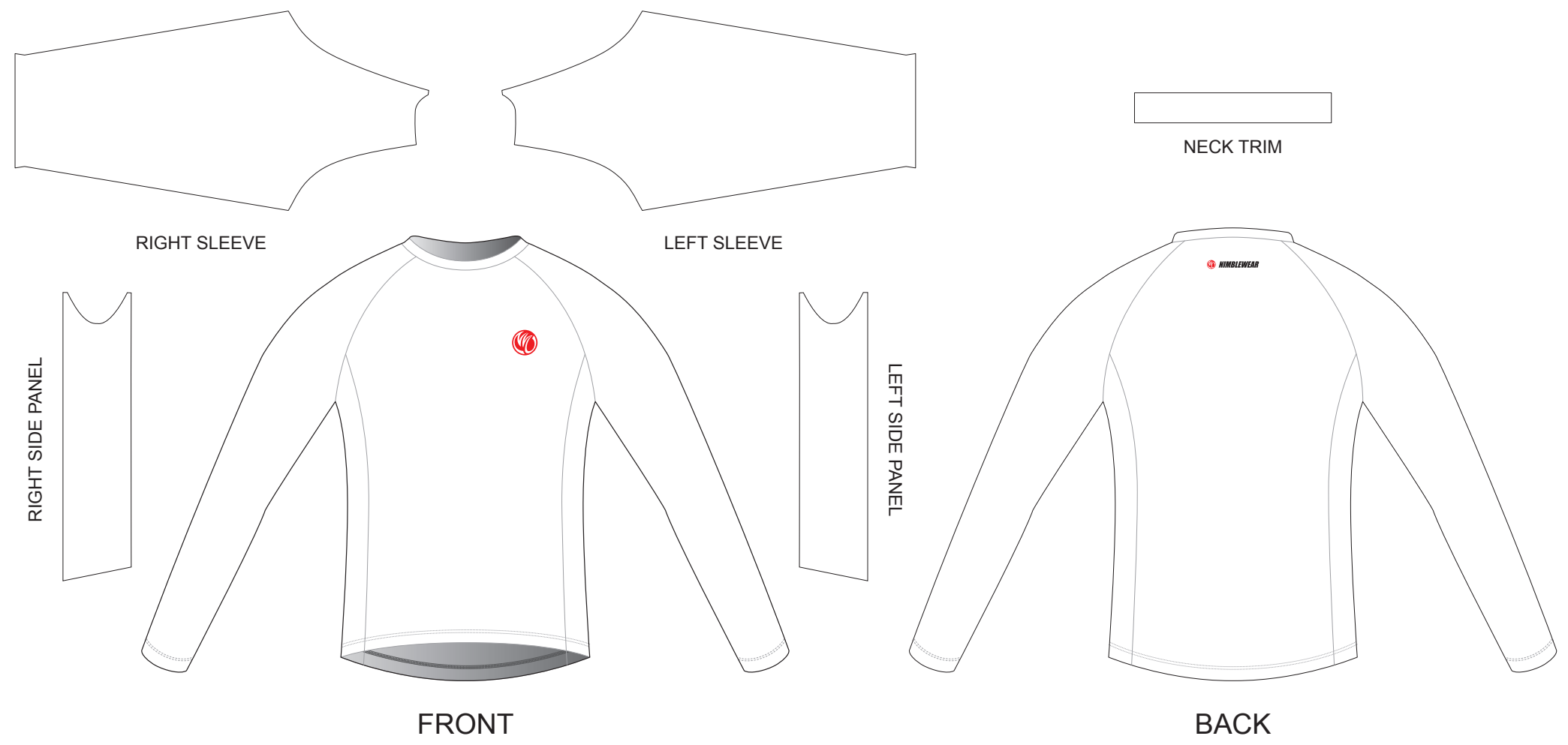
**DATE:** 00 / 00 / 2013

- This template can be edited with vector graphic software programs. Adobe Illustrator CS5 is recommended.
- All logos must be provided in vector format and all fonts must be converted into outline.
- The color on-screen may vary from the finished product. To confirm the color please refer to PANTONE® MATCHING SYSTEM FORMULA GUIDE Solid Coated.
- We will try the best to match the PANTONE® colors when printing, but exact matching cannot be guaranteed, due to variation in temperature, humidity and materials.

# DBA08 Long Sleeve Running Shirt

Women, Raglan Sleeve, Crew Neck, with Side Panels

www.nimblewear.com  
www.nimblewear.net



**COLORS USED:**



**CUSTOMER:** \_\_\_\_\_

**DESIGN REQUEST NUMBER:** \_\_\_\_\_

**VERSION:** 1

**DATE:** 00 / 00 / 2013

• This template can be edited with vector graphic software programs. Adobe Illustrator CS5 is recommended.  
• All logos must be provided in vector format and all fonts must be converted into outline.  
• The color on-screen may vary from the finished product. To confirm the color please refer to PANTONE® MATCHING SYSTEM FORMULA GUIDE Solid Coated.  
• We will try the best to match the PANTONE® colors when printing, but exact matching cannot be guaranteed, due to variation in temperature, humidity and materials.